

Converting Colors

Decimal(12422250)

Have a look what the booklet for
Decimal(12422250) contains.

Decimal(12422250)	3
<i>Conversions</i>	4
<i>Details</i>	6
<i>Harmonies</i>	11
<i>Previews</i>	23
<i>Color Blindness Simulation</i>	26
<i>CSS Examples</i>	29

Color

Decimal(12422250)

Conversions

Conversions Part 1

Format	Color
Hex	BD8C6A
RGB	189, 140, 106
RGB Percent	74%, 55%, 42%
CMY	0.2588, 0.4510, 0.5843
CMYK	0.00, 0.26, 0.44, 0.26
HSL	25°, 39%, 58%
HSV	25°, 44%, 74%
XYZ	32.9659, 30.6156, 17.8076
YIQ	150.7750, 40.1180, -0.1860

Conversions

Conversions Part 2

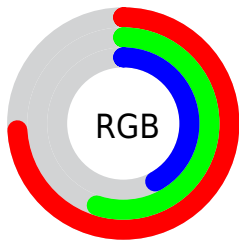
Format	Color
R _{YB}	189, 164, 106
Decimal	12422250
CIE Lab	62.18, 14.31, 25.42
CIE LCh	62, 29.174, 60.626
Yxy	30.6156, 0.4050, 0.3762
Android (android.graphics.Color)	4290612330 (0xFFBD8C6A)
YUV	150.7750, -22.0741, 33.5233
Hunter-Lab	55.3314, 9.5186, 19.6503

Details

The Decimal color **12422250** is a dark color, and the websafe version is hex **CC9966**. A complement of this color would be **6986685**, and the grayscale version is **9934743**.

A 20% lighter version of the original color is **16237214**, and **8804922** is the 20% darker color. If you saturate the color by 10%, you get **12419415**, and if you desaturate by 10%, it is **12425085**.

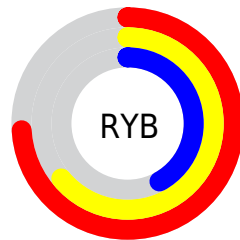
Distribution



Red (74%)

Green (55%)

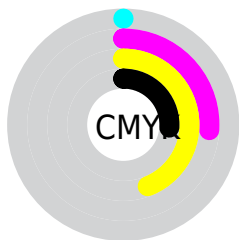
Blue (42%)



Red (74%)

Yellow (64%)

Blue (42%)

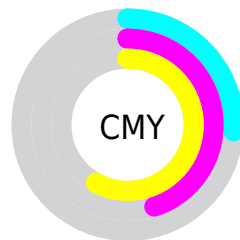


Cyan (0%)

Magenta (26%)

Yellow (44%)

Black (26%)



Cyan (26%)

Magenta (45%)

Yellow (58%)

Brightness & Saturation Gradients

These gradients show how the Decimal color 12422250 changes by changing the brightness by 10 percent. The first figure shows a shift by +10% for each color and the second figure -10%.

Similar to the brightness gradients but the following saturation gradients show a change of the Decimal color 12422250 by changing the saturation by 10% instead.


 12422250

 12422250

16777215

 10580562

 16237214

 8804922

 16768697

 7029284

 16775892

 5319695

 16777201

 3675904

 2162688

 0

 12422250

 12422250

 12419415

 12425085

 12416580

 12427920

 12413745

 12430755

 12410654

 12433846

 12407820

 12436681

 12406016

 12439515

 12442350

 12445183

 12447999

Harmonies

Analogous

The Analogous color harmony consists of three colors that are next to each other on the color wheel.



13206909



12422250



11048290

Triad

The Triadic color harmony groups three colors that are evenly spaced from another and form a triangle on the color wheel.



12422250



5285014



10129347

Complementary

The Complementary color scheme is a pair of colors which are on the opposite of each other on the color wheel.



12422250



6986685

Split Complementary

Split-complementary colors differ from the complementary color scheme. The scheme consists of three colors, the original color and two neighbors of the complement color.



7641546



12422250



4170928

Square

The Square scheme is like the rectangle color scheme, but the four colors are evenly spaced on the color wheel.



12422250



7250556



5218499



12093360

Rectangle

The Rectangle color scheme consists of four colors that form a rectangle on the color wheel.



12422250



9869925



5218499



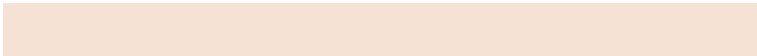
9343943

Sweetspot

The Sweet Spot groups the original color and five complimentary colors.



12422250



16114389



12413596



8023911



16448250



8026746

Same Dimension

The Same Dimension uses a secret algorithm to generate beautiful new colors.



12422250



16099443



12432746



6183253



10371328



2034944

Inverse Universe

The Inverse Universe completely reimagines the original color for something new.



6986685



7586037



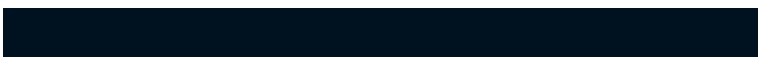
6976189



5593694



23966



4639

Previews

White Background



This preview shows how the Decimal color 12422250 looks on a white background.

Color Contrast Check

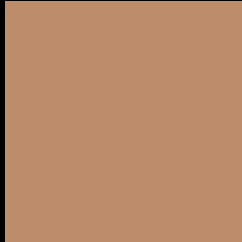
Large Text (above 18pt) WCAG AA × Fail

Any Text WCAG AA × Fail

Large Text (above 18pt) WCAG AAA × Fail

Any Text WCAG AAA × Fail

Black Background



This preview shows how the Decimal color 12422250 looks on a black background.

Color Contrast Check

Large Text (above 18pt) WCAG AA ✓ Pass

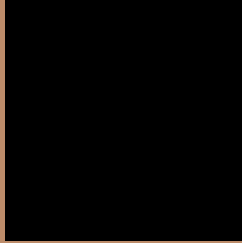
Any Text WCAG AA ✓ Pass

Large Text (above 18pt) WCAG AAA ✓ Pass

Any Text WCAG AAA ✓ Pass

If you want to check with other color combinations, try the [Color Contrast Checker](#).

Decimal 12422250 Background



This preview shows how black text looks on a background with the Decimal color 12422250.



This preview shows how white text looks on a background with the Decimal color 12422250.

Color Blindness Simulation

Color vision deficiency is a very complex topic, and I could not describe the different causes any better than Wikipedia does, so if you want to learn more, you should check out their [article about color blindness](#).


Dichromacy



Original Color
12422250

Protanopia
10655342

Deuteranopia
11767913



Tritanopia
12683153

Trichromacy



Original Color
12422250

Protanomaly
11309677

Deuteranomaly
12029801

Tritanomaly
12618115

Monochromacy



Original Color
12422250

Achromatopsia
9934743

Achromatomaly
10851207

CSS Examples

Text

The CSS property to change the color of the text to Decimal 12422250 is called "color". The color property can be set on classes, ids or directly on the HTML element.

This example shows how text in the color #BD8C6A looks like.

```
.text, #text, p{  
    color:#BD8C6A  
}
```

If you want to add a text shadow in that color use the text-shadow property, you can generate a text shadow directly with our [CSS Text Shadow Generator](#).

Here you see how black text with a 4 pixel #BD8C6A colored shadow looks like.

```
.shadow{ text-shadow: 4px 4px 2px #BD8C6A
}
```

Border

The CSS property to change the border of an element to Decimal 12422250 is called "border". The border property can be set on classes, ids or directly on the HTML element.

This example shows the color as border, it can be applied via the CSS property "border" or "border-color".

```
.border, #border, table{ border:4px solid
#BD8C6A }
```

If only the border color should be changed use the property `border-color`.

```
.border{ border-color:#BD8C6A }
```

If you want to add a box shadow in that color use:

Here you see how a box with a 4 pixel #BD8C6A colored shadow looks like.

```
.boxshadow{ -moz-box-shadow:4px 4px 4px  
4px #BD8C6A; -webkit-box-shadow:4px 4px  
4px 4px #BD8C6A; box-shadow:4px 4px 4px  
4px #BD8C6A }
```

Background

The CSS property to change the background color of an element to Decimal 12422250 is called "background". The background property can be set on classes, ids or directly on the HTML element.

```
.background, #background, body{  
background:#BD8C6A }
```

If only the background color should be changed can be used:

```
.background{ background-color:#BD8C6A }
```

This example shows the color as background, it is applied via the CSS property "background".

To optimize and compress your CSS code, you can use our [online CSS compressor and optimizer](#) based on csstidy. If you want to create a linear or radial gradient as background or border, check our [CSS Gradient Generator](#).

Hey! You found this booklet interesting? Support Converting Colors with the new Membership Option!

The pro membership hides all ads, plus gives you double the colors in the color bucket, and more awesome pro features!

[Learn more, Memberships starting at \\$2.50/m!](#)

**Follow me
on Twitter!**

@ConvertingColor