

Converting Colors

Decimal(12423559)

Have a look what the booklet for
Decimal(12423559) contains.

Decimal(12423559)	3
<i>Conversions</i>	4
<i>Details</i>	6
<i>Harmonies</i>	11
<i>Previews</i>	23
<i>Color Blindness Simulation</i>	26
<i>CSS Examples</i>	29

Color

Decimal(12423559)

Conversions

Conversions Part 1

Format	Color
Hex	BD9187
RGB	189, 145, 135
RGB Percent	74%, 57%, 53%
CMY	0.2588, 0.4314, 0.4706
CMYK	0.00, 0.23, 0.29, 0.26
HSL	11°, 29%, 64%
HSV	11°, 29%, 74%
XYZ	35.4848, 32.8189, 27.3861
YIQ	157.0160, 29.4340, 6.2180

Conversions

Conversions Part 2

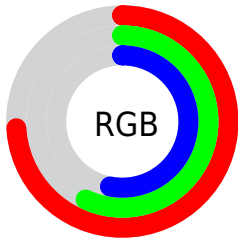
Format	Color
RYB	189, 147, 135
Decimal	12423559
CIELab	64.01, 15.14, 11.71
CIELCh	64, 19.140, 37.713
Yxy	32.8189, 0.3708, 0.3430
Android (android.graphics.Color)	4290613639 (0xFFBD9187)
YUV	157.0160, -10.8539, 28.0500
Hunter-Lab	57.2878, 10.3118, 11.7582

Details

The Decimal color **12423559** is a light color, and the websafe version is hex **CC9999**. A complement of this color would be **8893373**, and the grayscale version is **10329501**.

A 20% lighter version of the original color is **16172988**, and **8871509** is the 20% darker color. If you saturate the color by 10%, you get **12419700**, and if you desaturate by 10%, it is **12427418**.

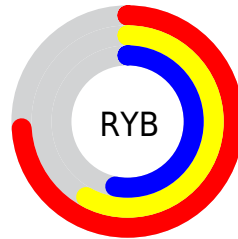
Distribution



Red (74%)

Green (57%)

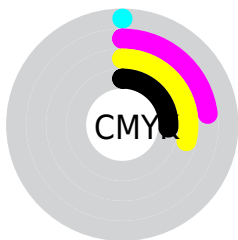
Blue (53%)



Red (74%)

Yellow (58%)

Blue (53%)

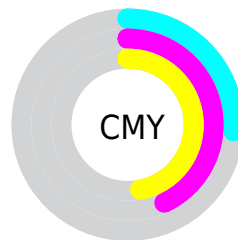


Cyan (0%)

Magenta (23%)

Yellow (29%)

Black (26%)



Cyan (26%)

Magenta (43%)

Yellow (47%)

Brightness & Saturation Gradients

These gradients show how the Decimal color 12423559 changes by changing the brightness by 10 percent. The first figure shows a shift by +10% for each color and the second figure -10%.

Similar to the brightness gradients but the following saturation gradients show a change of the Decimal color 12423559 by changing the saturation by 10% instead.

 12423559

 12423559

16777215

 10581870

 16172988

 8871509

 16770008

 7096126

 16777204

 5451816

 3873300

 2425344

 0

 12423559

 12423559

 12419700

 12427418

 12415585

 12431533

 12411726

 12435392

 12407611

 12439507

 12403752

 12443366

 12399894

 12447224

 12395779

 12451327

 12395264

 12451839

Harmonies

Analogous

The Analogous color harmony consists of three colors that are next to each other on the color wheel.



12488599



12423559



11769468

Triad

The Triadic color harmony groups three colors that are evenly spaced from another and form a triangle on the color wheel.



12423559



8299662



9280445

Complementary

The Complementary color scheme is a pair of colors which are on the opposite of each other on the color wheel.



12423559



8893373

Split Complementary

Split-complementary colors differ from the complementary color scheme. The scheme consists of three colors, the original color and two neighbors of the complement color.



7905466



12423559



7316895

Square

The Square scheme is like the rectangle color scheme, but the four colors are evenly spaced on the color wheel.



12423559



9543808



7185583



10786230

Rectangle

The Rectangle color scheme consists of four colors that form a rectangle on the color wheel.



12423559



11115129



7185583



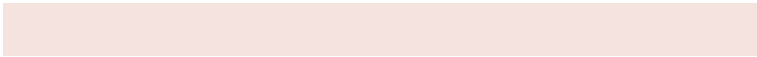
8822205

Sweetspot

The Sweet Spot groups the original color and five complimentary colors.



12423559



16114655



12421043



8023917



16448250



8026746

Same Dimension

The Same Dimension uses a secret algorithm to generate beautiful new colors.



12423559



16101794



12430471



6182741



10362112



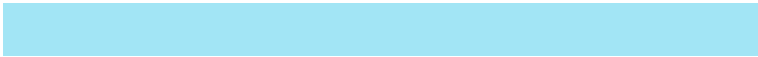
2033152

Inverse Universe

The Inverse Universe completely reimagines the original color for something new.



8893373



10675701



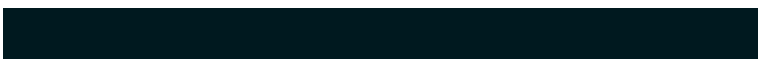
8886461



5594462



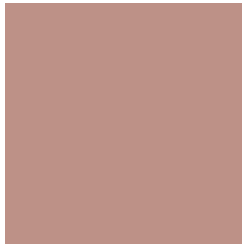
33182



6431

Previews

White Background



This preview shows how the Decimal color 12423559 looks on a white background.

Color Contrast Check

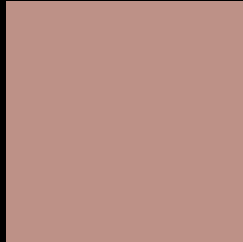
Large Text (above 18pt) WCAG AA × Fail

Any Text WCAG AA × Fail

Large Text (above 18pt) WCAG AAA × Fail

Any Text WCAG AAA × Fail

Black Background



This preview shows how the Decimal color 12423559 looks on a black background.

Color Contrast Check

Large Text (above 18pt) WCAG AA ✓ Pass

Any Text WCAG AA ✓ Pass

Large Text (above 18pt) WCAG AAA ✓ Pass

Any Text WCAG AAA ✓ Pass

If you want to check with other color combinations, try the [Color Contrast Checker](#).

Decimal 12423559 Background



This preview shows how black text looks on a background with the Decimal color 12423559.



This preview shows how white text looks on a background with the Decimal color 12423559.

Color Blindness Simulation

Color vision deficiency is a very complex topic, and I could not describe the different causes any better than Wikipedia does, so if you want to learn more, you should check out their [article about color blindness](#).

Dichromacy



Original Color


12423559

Protanopia

10656652

Deuteranopia

11703942



Tritanopia
12553881

Trichromacy



Original Color
12423559

Protanomaly
11310986

Deuteranomaly
11965574

Tritanomaly
12488594

Monochromacy



Original Color
12423559

Achromatopsia
10329501

Achromatomaly
11114901

CSS Examples

Text

The CSS property to change the color of the text to Decimal 12423559 is called "color". The color property can be set on classes, ids or directly on the HTML element.

This example shows how text in the color #BD9187 looks like.

```
.text, #text, p{  
    color:#BD9187  
}
```

If you want to add a text shadow in that color use the text-shadow property, you can generate a text shadow directly with our [CSS Text Shadow Generator](#).

Here you see how black text with a 4 pixel #BD9187 colored shadow looks like.

```
.shadow{ text-shadow: 4px 4px 2px #BD9187
}
```

Border

The CSS property to change the border of an element to Decimal 12423559 is called "border". The border property can be set on classes, ids or directly on the HTML element.

This example shows the color as border, it can be applied via the CSS property "border" or "border-color".

```
.border, #border, table{ border:4px solid
#BD9187 }
```

If only the border color should be changed use the property `border-color`.

```
.border{ border-color:#BD9187 }
```

If you want to add a box shadow in that color use:

Here you see how a box with a 4 pixel #BD9187 colored shadow looks like.

```
.boxshadow{ -moz-box-shadow:4px 4px 4px  
4px #BD9187; -webkit-box-shadow:4px 4px  
4px 4px #BD9187; box-shadow:4px 4px 4px  
4px #BD9187 }
```

Background

The CSS property to change the background color of an element to Decimal 12423559 is called "background". The background property can be set on classes, ids or directly on the HTML element.

```
.background, #background, body{  
background:#BD9187 }
```

If only the background color should be changed can be used:

```
.background{ background-color:#BD9187 }
```

This example shows the color as background, it is applied via the CSS property "background".

To optimize and compress your CSS code, you can use our [online CSS compressor and optimizer](#) based on csstidy. If you want to create a linear or radial gradient as background or border, check our [CSS Gradient Generator](#).

Hey! You found this booklet interesting? Support Converting Colors with the new Membership Option!

The pro membership hides all ads, plus gives you double the colors in the color bucket, and more awesome pro features!

[Learn more, Memberships starting at \\$2.50/m!](#)

**Follow me
on Twitter!**

@ConvertingColor