

Converting Colors

Decimal(12423561)

Have a look what the booklet for
Decimal(12423561) contains.

Decimal(12423561)	3
<i>Conversions</i>	4
<i>Details</i>	6
<i>Harmonies</i>	11
<i>Previews</i>	23
<i>Color Blindness Simulation</i>	26
<i>CSS Examples</i>	29

Color

Decimal(12423561)

Conversions

Conversions Part 1

Format	Color
Hex	BD9189
RGB	189, 145, 137
RGB Percent	74%, 57%, 54%
CMY	0.2588, 0.4314, 0.4627
CMYK	0.00, 0.23, 0.28, 0.26
HSL	9°, 28%, 64%
HSV	9°, 28%, 74%
XYZ	35.6270, 32.8758, 28.1348
YIQ	157.2440, 28.7920, 6.8400

Conversions

Conversions Part 2

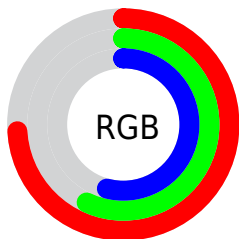
Format	Color
R _Y B	189, 146, 137
Decimal	12423561
CIE Lab	64.06, 15.42, 10.65
CIE LCh	64, 18.741, 34.621
Yxy	32.8758, 0.3687, 0.3402
Android (android.graphics.Color)	4290613641 (0xFFBD9189)
YUV	157.2440, -9.9803, 27.8500
Hunter-Lab	57.3374, 10.5719, 11.0432

Details

The Decimal color **12423561** is a light color, and the websafe version is hex **CC9999**. A complement of this color would be **9024957**, and the grayscale version is **10329501**.

A 20% lighter version of the original color is **16172990**, and **8871511** is the 20% darker color. If you saturate the color by 10%, you get **12419446**, and if you desaturate by 10%, it is **12427676**.

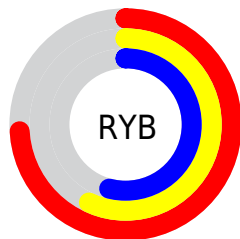
Distribution



Red (74%)

Green (57%)

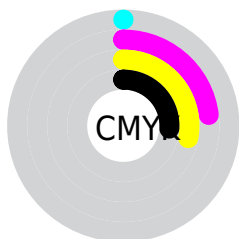
Blue (54%)



Red (74%)

Yellow (57%)

Blue (54%)

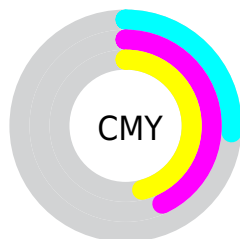


Cyan (0%)

Magenta (23%)

Yellow (28%)

Black (26%)



Cyan (26%)

Magenta (43%)

Yellow (46%)

Brightness & Saturation Gradients

These gradients show how the Decimal color 12423561 changes by changing the brightness by 10 percent. The first figure shows a shift by +10% for each color and the second figure -10%.

Similar to the brightness gradients but the following saturation gradients show a change of the Decimal color 12423561 by changing the saturation by 10% instead.

 12423561

 12423561

16777215

 10581872

 16172990

 8871511

 16770010

 7161664

 16777207

 5451818

 3873302

 2490880

 0

 12423561

 12423561

 12419446

 12427676

 12415331

 12431791

 12411216

 12435906

 12407101

 12440021

 12402986

 12444136

 12398872

 12448250

 12394757

 12451839

 12393728

Harmonies

Analogous

The Analogous color harmony consists of three colors that are next to each other on the color wheel.



12423065



12423561



11834750

Triad

The Triadic color harmony groups three colors that are evenly spaced from another and form a triangle on the color wheel.



12423561



8430732



9149628

Complementary

The Complementary color scheme is a pair of colors which are on the opposite of each other on the color wheel.



12423561



9024957

Split Complementary

Split-complementary colors differ from the complementary color scheme. The scheme consists of three colors, the original color and two neighbors of the complement color.



7840185



12423561



7513501

Square

The Square scheme is like the rectangle color scheme, but the four colors are evenly spaced on the color wheel.



12423561



9674879



7185582



10589879

Rectangle

The Rectangle color scheme consists of four colors that form a rectangle on the color wheel.



12423561



11245946



7185582



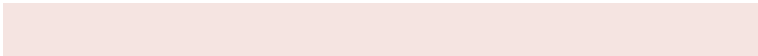
8691388

Sweetspot

The Sweet Spot groups the original color and five complimentary colors.



12423561



16114913



12421557



8024174



16448250



8026746

Same Dimension

The Same Dimension uses a secret algorithm to generate beautiful new colors.



12423561



16101540



12430217



6182485



10360832



2032896

Inverse Universe

The Inverse Universe completely reimagines the original color for something new.



9024957



10807541



9018301



5594462



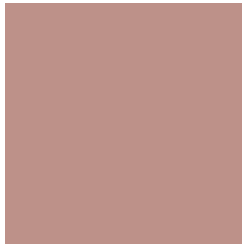
34462



6687

Previews

White Background



This preview shows how the Decimal color 12423561 looks on a white background.

Color Contrast Check

Large Text (above 18pt) WCAG AA × Fail

Any Text WCAG AA × Fail

Large Text (above 18pt) WCAG AAA × Fail

Any Text WCAG AAA × Fail

Black Background



This preview shows how the Decimal color 12423561 looks on a black background.

Color Contrast Check

Large Text (above 18pt) WCAG AA ✓ Pass

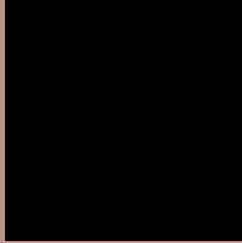
Any Text WCAG AA ✓ Pass

Large Text (above 18pt) WCAG AAA ✓ Pass

Any Text WCAG AAA ✓ Pass

If you want to check with other color combinations, try the [Color Contrast Checker](#).

Decimal 12423561 Background



This preview shows how black text looks on a background with the Decimal color 12423561.



This preview shows how white text looks on a background with the Decimal color 12423561.

Color Blindness Simulation

Color vision deficiency is a very complex topic, and I could not describe the different causes any better than Wikipedia does, so if you want to learn more, you should check out their [article about color blindness](#).


Dichromacy



Original Color
12423561

Protanopia
10591118

Deuteranopia
11703944



Tritanopia
12554137

Trichromacy



Original Color
12423561

Protanomaly
11245452

Deuteranomaly
11965576

Tritanomaly
12488851

Monochromacy



Original Color
12423561

Achromatopsia
10329501

Achromatomaly
11114902

CSS Examples

Text

The CSS property to change the color of the text to Decimal 12423561 is called "color". The color property can be set on classes, ids or directly on the HTML element.

This example shows how text in the color #BD9189 looks like.

```
.text, #text, p{  
    color:#BD9189  
}
```

If you want to add a text shadow in that color use the text-shadow property, you can generate a text shadow directly with our [CSS Text Shadow Generator](#).

Here you see how black text with a 4 pixel #BD9189 colored shadow looks like.

```
.shadow{ text-shadow: 4px 4px 2px #BD9189
}
```

Border

The CSS property to change the border of an element to Decimal 12423561 is called "border". The border property can be set on classes, ids or directly on the HTML element.

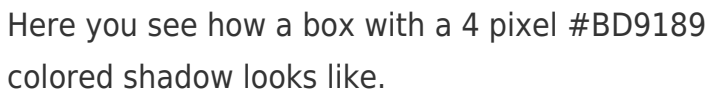
This example shows the color as border, it can be applied via the CSS property "border" or "border-color".

```
.border, #border, table{ border:4px solid
#BD9189 }
```

If only the border color should be changed use the property `border-color`.

```
.border{ border-color:#BD9189 }
```

If you want to add a box shadow in that color use:



Here you see how a box with a 4 pixel #BD9189 colored shadow looks like.

```
.boxshadow{ -moz-box-shadow:4px 4px 4px  
4px #BD9189; -webkit-box-shadow:4px 4px  
4px 4px #BD9189; box-shadow:4px 4px 4px  
4px #BD9189 }
```

Background

The CSS property to change the background color of an element to Decimal 12423561 is called "background". The background property can be set on classes, ids or directly on the HTML element.

```
.background, #background, body{  
background:#BD9189 }
```

If only the background color should be changed can be used:

```
.background{ background-color:#BD9189 }
```

This example shows the color as background, it is applied via the CSS property "background".

To optimize and compress your CSS code, you can use our [online CSS compressor and optimizer](#) based on csstidy. If you want to create a linear or radial gradient as background or border, check our [CSS Gradient Generator](#).

Hey! You found this booklet interesting? Support Converting Colors with the new Membership Option!

The pro membership hides all ads, plus gives you double the colors in the color bucket, and more awesome pro features!

[Learn more, Memberships starting at \\$2.50/m!](#)

**Follow me
on Twitter!**

@ConvertingColor