

Converting Colors

Decimal(12424049)

Have a look what the booklet for
Decimal(12424049) contains.

Decimal(12424049)	3
<i>Conversions</i>	4
<i>Details</i>	6
<i>Harmonies</i>	11
<i>Previews</i>	23
<i>Color Blindness Simulation</i>	26
<i>CSS Examples</i>	29

Color

Decimal(12424049)

Conversions

Conversions Part 1

Format	Color
Hex	BD9371
RGB	189, 147, 113
RGB Percent	74%, 58%, 44%
CMY	0.2588, 0.4235, 0.5569
CMYK	0.00, 0.22, 0.40, 0.26
HSL	27°, 37%, 59%
HSV	27°, 40%, 74%
XYZ	34.4006, 32.8785, 20.1559
YIQ	155.6820, 35.9460, -1.6700

Conversions

Conversions Part 2

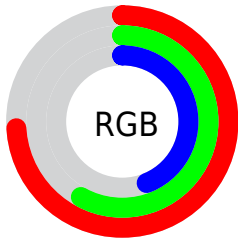
Format	Color
RYB	189, 175, 113
Decimal	12424049
CIELab	64.06, 11.23, 24.05
CIElCh	64, 26.546, 64.978
Yxy	32.8785, 0.3934, 0.3760
Android (android.graphics.Color)	4290614129 (0xFFBD9371)
YUV	155.6820, -21.0422, 29.2199
Hunter-Lab	57.3398, 6.7453, 19.2965

Details

The Decimal color **12424049** is a light color, and the websafe version is hex **CC9966**. A complement of this color would be **7445437**, and the grayscale version is **10263708**.

A 20% lighter version of the original color is **16239013**, and **8806465** is the 20% darker color. If you saturate the color by 10%, you get **12421470**, and if you desaturate by 10%, it is **12426628**.

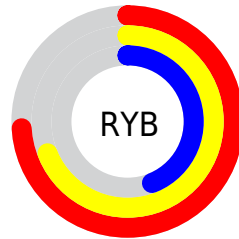
Distribution



Red (74%)

Green (58%)

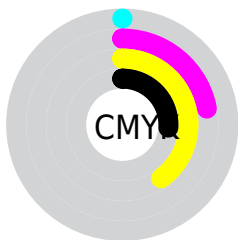
Blue (44%)



Red (74%)

Yellow (69%)

Blue (44%)

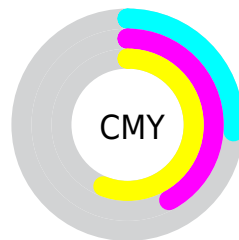


Cyan (0%)

Magenta (22%)

Yellow (40%)

Black (26%)



Cyan (26%)

Magenta (42%)

Yellow (56%)

Brightness & Saturation Gradients

These gradients show how the Decimal color 12424049 changes by changing the brightness by 10 percent. The first figure shows a shift by +10% for each color and the second figure -10%.

Similar to the brightness gradients but the following saturation gradients show a change of the Decimal color 12424049 by changing the saturation by 10% instead.

 12424049

 12424049

16777215

 10582360

 16239013

 8806465

 16770496

 7031082

 16777180

 5386773

 16777209

 3808512

 2229504

 0

 12424049

 12424049

 12421470

 12426628

 12418635

 12429463

 12416056

 12432042

 12413221

 12434877

 12410642

 12437456

 12408064

 12440290

 12442869

 12445695

 12448255

Harmonies

Analogous

The Analogous color harmony consists of three colors that are next to each other on the color wheel.



13208705



12424049



11049836

Triad

The Triadic color harmony groups three colors that are evenly spaced from another and form a triangle on the color wheel.



12424049



6006942



10785986

Complementary

The Complementary color scheme is a pair of colors which are on the opposite of each other on the color wheel.



12424049



7445437

Split Complementary

Split-complementary colors differ from the complementary color scheme. The scheme consists of three colors, the original color and two neighbors of the complement color.



8625354



12424049



5416886

Square

The Square scheme is like the rectangle color scheme, but the four colors are evenly spaced on the color wheel.



12424049



7579526



6464453



12422576

Rectangle

The Rectangle color scheme consists of four colors that form a rectangle on the color wheel.



12424049



9937008



6464453



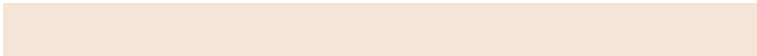
10065862

Sweetspot

The Sweet Spot groups the original color and five complimentary colors.



12424049



16115159



12415388



8024425



16448250



8026746

Same Dimension

The Same Dimension uses a secret algorithm to generate beautiful new colors.



12424049



16102527



12433521



6183253



10372864



2035200

Inverse Universe

The Inverse Universe completely reimagines the original color for something new.



7445437



8372469



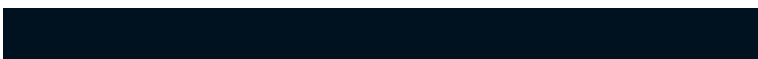
7435965



5593694



22430



4383

Previews

White Background



This preview shows how the Decimal color 12424049 looks on a white background.

Color Contrast Check

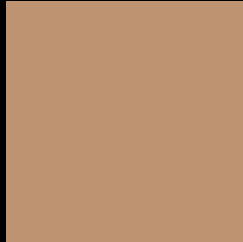
Large Text (above 18pt) WCAG AA × Fail

Any Text WCAG AA × Fail

Large Text (above 18pt) WCAG AAA × Fail

Any Text WCAG AAA × Fail

Black Background



This preview shows how the Decimal color 12424049 looks on a black background.

Color Contrast Check

Large Text (above 18pt) WCAG AA ✓ Pass

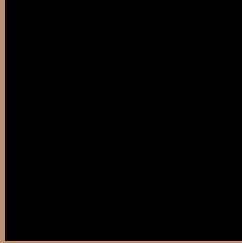
Any Text WCAG AA ✓ Pass

Large Text (above 18pt) WCAG AAA ✓ Pass

Any Text WCAG AAA ✓ Pass

If you want to check with other color combinations, try the [Color Contrast Checker](#).

Decimal 12424049 Background



This preview shows how black text looks on a background with the Decimal color 12424049.

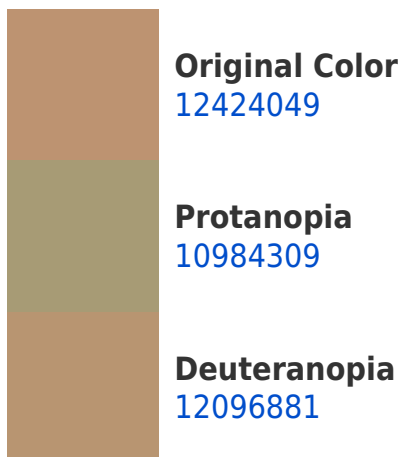



This preview shows how white text looks on a background with the Decimal color 12424049.

Color Blindness Simulation

Color vision deficiency is a very complex topic, and I could not describe the different causes any better than Wikipedia does, so if you want to learn more, you should check out their [article about color blindness](#).

Dichromacy





Tritanopia
12684953

Trichromacy



Original Color
12424049

Protanomaly
11507828

Deuteranomaly
12227697

Tritanomaly
12619914

Monochromacy



Original Color
12424049

Achromatopsia
10263708

Achromatomaly
11049356

CSS Examples

Text

The CSS property to change the color of the text to Decimal 12424049 is called "color". The color property can be set on classes, ids or directly on the HTML element.

This example shows how text in the color #BD9371 looks like.

```
.text, #text, p{  
  color:#BD9371  
}
```

If you want to add a text shadow in that color use the text-shadow property, you can generate a text shadow directly with our [CSS Text Shadow Generator](#).

Here you see how black text with a 4 pixel #BD9371 colored shadow looks like.

```
.shadow{ text-shadow: 4px 4px 2px #BD9371
}
```

Border

The CSS property to change the border of an element to Decimal 12424049 is called "border". The border property can be set on classes, ids or directly on the HTML element.

This example shows the color as border, it can be applied via the CSS property "border" or "border-color".

```
.border, #border, table{ border:4px solid
#BD9371 }
```

If only the border color should be changed use the property `border-color`.

```
.border{ border-color:#BD9371 }
```

If you want to add a box shadow in that color use:

Here you see how a box with a 4 pixel #BD9371 colored shadow looks like.

```
.boxshadow{ -moz-box-shadow:4px 4px 4px  
4px #BD9371; -webkit-box-shadow:4px 4px  
4px 4px #BD9371; box-shadow:4px 4px 4px  
4px #BD9371 }
```

Background

The CSS property to change the background color of an element to Decimal 12424049 is called "background". The background property can be set on classes, ids or directly on the HTML element.

```
.background, #background, body{  
background:#BD9371 }
```

If only the background color should be changed can be used:

```
.background{ background-color:#BD9371 }
```

This example shows the color as background, it is applied via the CSS property "background".

To optimize and compress your CSS code, you can use our [online CSS compressor and optimizer](#) based on csstidy. If you want to create a linear or radial gradient as background or border, check our [CSS Gradient Generator](#).

Hey! You found this booklet interesting? Support Converting Colors with the new Membership Option!

The pro membership hides all ads, plus gives you double the colors in the color bucket, and more awesome pro features!

[Learn more, Memberships starting at \\$2.50/m!](#)

**Follow me
on Twitter!**

@ConvertingColor