

Converting Colors

Decimal(12424081)

Have a look what the booklet for
Decimal(12424081) contains.

Decimal(12424081)	3
<i>Conversions</i>	4
<i>Details</i>	6
<i>Harmonies</i>	11
<i>Previews</i>	23
<i>Color Blindness Simulation</i>	26
<i>CSS Examples</i>	29

Color

Decimal(12424081)

Conversions

Conversions Part 1

Format	Color
Hex	BD9391
RGB	189, 147, 145
RGB Percent	74%, 58%, 57%
CMY	0.2588, 0.4235, 0.4314
CMYK	0.00, 0.22, 0.23, 0.26
HSL	3°, 25%, 65%
HSV	3°, 23%, 74%
XYZ	36.5308, 33.7306, 31.3733
YIQ	159.3300, 25.6740, 8.2820

Conversions

Conversions Part 2

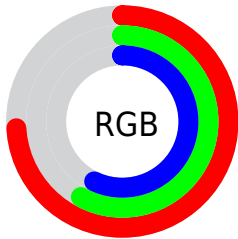
Format	Color
R _Y B	189, 147, 145
Decimal	12424081
CIE Lab	64.75, 15.48, 7.12
CIE LCh	65, 17.040, 24.708
Yxy	33.7306, 0.3594, 0.3319
Android (android.graphics.Color)	4290614161 (0xFFBD9391)
YUV	159.3300, -7.0647, 26.0206
Hunter-Lab	58.0780, 10.6391, 8.6266

Details

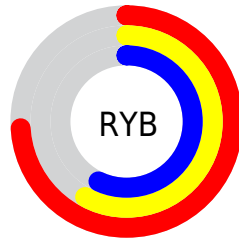
The Decimal color **12424081** is a light color, and the websafe version is hex **CC9999**. A complement of this color would be **9550781**, and the grayscale version is **10461087**.

A 20% lighter version of the original color is **16173511**, and **8872031** is the 20% darker color. If you saturate the color by 10%, you get **12419454**, and if you desaturate by 10%, it is **12428708**.

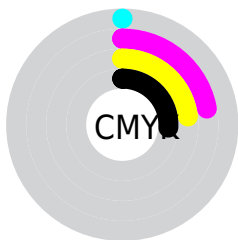
Distribution



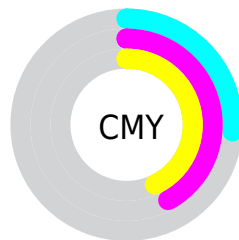
- Red (74%)
- Green (58%)
- Blue (57%)



- Red (74%)
- Yellow (58%)
- Blue (57%)



- Cyan (0%)
- Magenta (22%)
- Yellow (23%)
- Black (26%)



- Cyan (26%)
- Magenta (42%)
- Yellow (43%)

Brightness & Saturation Gradients

These gradients show how the Decimal color 12424081 changes by changing the brightness by 10 percent. The first figure shows a shift by +10% for each color and the second figure -10%.

Similar to the brightness gradients but the following saturation gradients show a change of the Decimal color 12424081 by changing the saturation by 10% instead.

 12424081

 12424081


16777215

 10647927

 16173511

 8872031

 16770531

 7161927

 5517617

 3939356

 2557185

 0

 12424081

 12424081

 12419454

 12428708

 12414827

 12433335

 12410200

 12437962

 12405573

 12442589

 12400946

 12447215

 12396320

 12451839

 12391693

 12388608

Harmonies

Analogous

The Analogous color harmony consists of three colors that are next to each other on the color wheel.



12227488



12424081



12097157

Triad

The Triadic color harmony groups three colors that are evenly spaced from another and form a triangle on the color wheel.



12424081



9086091



8953787

Complementary

The Complementary color scheme is a pair of colors which are on the opposite of each other on the color wheel.



12424081



9550781

Split Complementary

Split-complementary colors differ from the complementary color scheme. The scheme consists of three colors, the original color and two neighbors of the complement color.



7971765



12424081



8103578

Square

The Square scheme is like the rectangle color scheme, but the four colors are evenly spaced on the color wheel.



12424081



10199169



7644841



10263225

Rectangle

The Rectangle color scheme consists of four colors that form a rectangle on the color wheel.



12424081



11573632



7644841



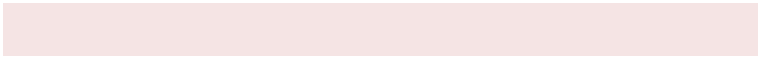
8561082

Sweetspot

The Sweet Spot groups the original color and five complimentary colors.



12424081



16114916



12423612



8024433



16448250



8026746

Same Dimension

The Same Dimension uses a secret algorithm to generate beautiful new colors.



12424081



16102320



12429457



6182229



10356480



2031872

Inverse Universe

The Inverse Universe completely reimagines the original color for something new.



9550781



11596533



9545405



5594718



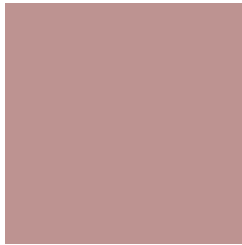
38814



7455

Previews

White Background



This preview shows how the Decimal color 12424081 looks on a white background.

Color Contrast Check

Large Text (above 18pt) WCAG AA × Fail

Any Text WCAG AA × Fail

Large Text (above 18pt) WCAG AAA × Fail

Any Text WCAG AAA × Fail

Black Background



This preview shows how the Decimal color 12424081 looks on a black background.

Color Contrast Check

Large Text (above 18pt) WCAG AA ✓ Pass

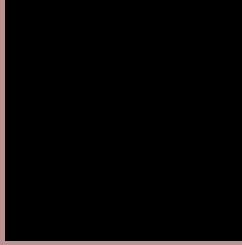
Any Text WCAG AA ✓ Pass

Large Text (above 18pt) WCAG AAA ✓ Pass

Any Text WCAG AAA ✓ Pass

If you want to check with other color combinations, try the [Color Contrast Checker](#).

Decimal 12424081 Background



This preview shows how black text looks on a background with the Decimal color 12424081.



This preview shows how white text looks on a background with the Decimal color 12424081.

Color Blindness Simulation

Color vision deficiency is a very complex topic, and I could not describe the different causes any better than Wikipedia does, so if you want to learn more, you should check out their [article about color blindness](#).


Dichromacy



Original Color
12424081

Protanopia
10657174

Deuteranopia
11638928



Tritanopia
12489116

Trichromacy



Original Color
12424081

Protanomaly
11311508

Deuteranomaly
11900560

Tritanomaly
12489368

Monochromacy



Original Color
12424081

Achromatopsia
10461087

Achromatomaly
11180954

CSS Examples

Text

The CSS property to change the color of the text to Decimal 12424081 is called "color". The color property can be set on classes, ids or directly on the HTML element.

This example shows how text in the color #BD9391 looks like.

```
.text, #text, p{  
  color:#BD9391  
}
```

If you want to add a text shadow in that color use the text-shadow property, you can generate a text shadow directly with our [CSS Text Shadow Generator](#).

Here you see how black text with a 4 pixel #BD9391 colored shadow looks like.

```
.shadow{ text-shadow: 4px 4px 2px #BD9391
}
```

Border

The CSS property to change the border of an element to Decimal 12424081 is called "border". The border property can be set on classes, ids or directly on the HTML element.

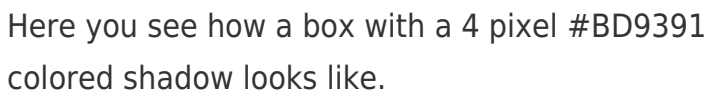
This example shows the color as border, it can be applied via the CSS property "border" or "border-color".

```
.border, #border, table{ border:4px solid
#BD9391 }
```

If only the border color should be changed use the property `border-color`.

```
.border{ border-color:#BD9391 }
```

If you want to add a box shadow in that color use:



Here you see how a box with a 4 pixel #BD9391 colored shadow looks like.

```
.boxshadow{ -moz-box-shadow:4px 4px 4px  
4px #BD9391; -webkit-box-shadow:4px 4px  
4px 4px #BD9391; box-shadow:4px 4px 4px  
4px #BD9391 }
```

Background

The CSS property to change the background color of an element to Decimal 12424081 is called "background". The background property can be set on classes, ids or directly on the HTML element.

```
.background, #background, body{  
background:#BD9391 }
```

If only the background color should be changed can be used:

```
.background{ background-color:#BD9391 }
```

This example shows the color as background, it is applied via the CSS property "background".

To optimize and compress your CSS code, you can use our [online CSS compressor and optimizer](#) based on csstidy. If you want to create a linear or radial gradient as background or border, check our [CSS Gradient Generator](#).

Hey! You found this booklet interesting? Support Converting Colors with the new Membership Option!

The pro membership hides all ads, plus gives you double the colors in the color bucket, and more awesome pro features!

[Learn more, Memberships starting at \\$2.50/m!](#)

**Follow me
on Twitter!**

@ConvertingColor