

Converting Colors

Decimal(12425085)

Have a look what the booklet for
Decimal(12425085) contains.

Decimal(12425085)	3
<i>Conversions</i>	4
<i>Details</i>	6
<i>Harmonies</i>	11
<i>Previews</i>	23
<i>Color Blindness Simulation</i>	26
<i>CSS Examples</i>	29

Color

Decimal(12425085)

Conversions

Conversions Part 1

Format	Color
Hex	BD977D
RGB	189, 151, 125
RGB Percent	74%, 59%, 49%
CMY	0.2588, 0.4078, 0.5098
CMYK	0.00, 0.20, 0.34, 0.26
HSL	24°, 33%, 62%
HSV	24°, 34%, 74%
XYZ	35.7545, 34.4327, 24.1637
YIQ	159.3980, 30.9940, -0.0300

Conversions

Conversions Part 2

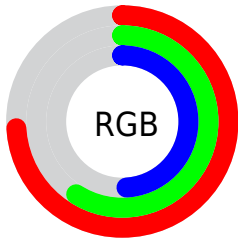
Format	Color
R _{YB}	189, 169, 125
Decimal	12425085
CIE Lab	65.30, 10.49, 19.09
CIE LCh	65, 21.784, 61.218
Yxy	34.4327, 0.3790, 0.3649
Android (android.graphics.Color)	4290615165 (0xFFBD977D)
YUV	159.3980, -16.9582, 25.9610
Hunter-Lab	58.6794, 6.0748, 16.6604

Details

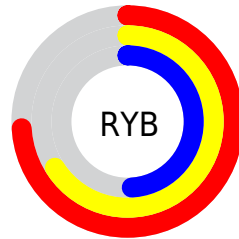
The Decimal color **12425085** is a light color, and the websafe version is hex **CC9999**. A complement of this color would be **8233917**, and the grayscale version is **10526880**.

A 20% lighter version of the original color is **16174514**, and **8807500** is the 20% darker color. If you saturate the color by 10%, you get **12422250**, and if you desaturate by 10%, it is **12427920**.

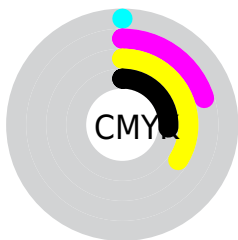
Distribution



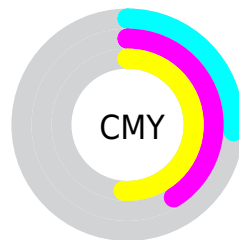
- Red (74%)
- Green (59%)
- Blue (49%)



- Red (74%)
- Yellow (66%)
- Blue (49%)



- Cyan (0%)
- Magenta (20%)
- Yellow (34%)
- Black (26%)





- Cyan (26%)
- Magenta (41%)
- Yellow (51%)

Brightness & Saturation Gradients

These gradients show how the Decimal color 12425085 changes by changing the brightness by 10 percent. The first figure shows a shift by +10% for each color and the second figure -10%.

Similar to the brightness gradients but the following saturation gradients show a change of the Decimal color 12425085 by changing the saturation by 10% instead.

 12425085  12425085

16777215  10583396

 16174514  8807500

 16771533  7097397

 16777193  5453087

 3874825

 2361856

 0

 12425085  12425085

 12422250  12427920

 12419415

 12430755

 12416324

 12433846

 12413489

 12436681

 12410654

 12439516

 12407820

 12442350

 12406016

 12445439

 12448255

 12451071

Harmonies

Analogous

The Analogous color harmony consists of three colors that are next to each other on the color wheel.



13013643



12425085



11312504

Triad

The Triadic color harmony groups three colors that are evenly spaced from another and form a triangle on the color wheel.



12425085



7252639



10721728

Complementary

The Complementary color scheme is a pair of colors which are on the opposite of each other on the color wheel.



12425085



8233917

Split Complementary

Split-complementary colors differ from the complementary color scheme. The scheme consists of three colors, the original color and two neighbors of the complement color.



8954053



12425085



6793650

Square

The Square scheme is like the rectangle color scheme, but the four colors are evenly spaced on the color wheel.



12425085



8497291



7448256



12096434

Rectangle

The Rectangle color scheme consists of four colors that form a rectangle on the color wheel.



12425085



10461818



7448256



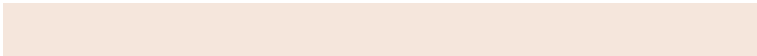
10132675

Sweetspot

The Sweet Spot groups the original color and five complimentary colors.



12425085



16115420



12418467



8024684



16448250



8026746

Same Dimension

The Same Dimension uses a secret algorithm to generate beautiful new colors.



12425085



16103824



12433277



6183253



10371072



2034688

Inverse Universe

The Inverse Universe completely reimagines the original color for something new.



8233917



9489653



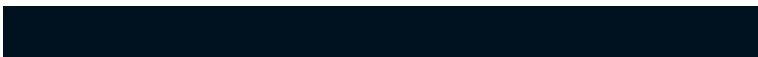
8225725



5593950



24222



4639

Previews

White Background



This preview shows how the Decimal color 12425085 looks on a white background.

Color Contrast Check

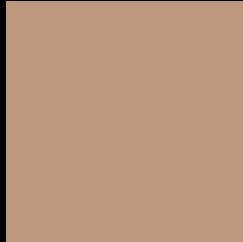
Large Text (above 18pt) WCAG AA × Fail

Any Text WCAG AA × Fail

Large Text (above 18pt) WCAG AAA × Fail

Any Text WCAG AAA × Fail

Black Background



This preview shows how the Decimal color 12425085 looks on a black background.

Color Contrast Check

Large Text (above 18pt) WCAG AA ✓ Pass

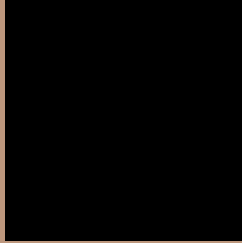
Any Text WCAG AA ✓ Pass

Large Text (above 18pt) WCAG AAA ✓ Pass

Any Text WCAG AAA ✓ Pass

If you want to check with other color combinations, try the [Color Contrast Checker](#).

Decimal 12425085 Background



This preview shows how black text looks on a background with the Decimal color 12425085.



This preview shows how white text looks on a background with the Decimal color 12425085.

Color Blindness Simulation

Color vision deficiency is a very complex topic, and I could not describe the different causes any better than Wikipedia does, so if you want to learn more, you should check out their [article about color blindness](#).

Dichromacy



Original Color
12425085

Protanopia
11050624

Deuteranopia
12228733



Tritanopia
12620446

Trichromacy



Original Color
12425085

Protanomaly
11574143

Deuteranomaly
12294269

Tritanomaly
12555410

Monochromacy



Original Color
12425085

Achromatopsia
10461087

Achromatomaly
11181203

CSS Examples

Text

The CSS property to change the color of the text to Decimal 12425085 is called "color". The color property can be set on classes, ids or directly on the HTML element.

This example shows how text in the color #BD977D looks like.

```
.text, #text, p{  
  color:#BD977D  
}
```

If you want to add a text shadow in that color use the text-shadow property, you can generate a text shadow directly with our [CSS Text Shadow Generator](#).

Here you see how black text with a 4 pixel #BD977D colored shadow looks like.

```
.shadow{ text-shadow: 4px 4px 2px #BD977D
}
```

Border

The CSS property to change the border of an element to Decimal 12425085 is called "border". The border property can be set on classes, ids or directly on the HTML element.

This example shows the color as border, it can be applied via the CSS property "border" or "border-color".

```
.border, #border, table{ border:4px solid
#BD977D }
```

If only the border color should be changed use the property border-color.

```
.border{ border-color:#BD977D }
```

If you want to add a box shadow in that color use:

Here you see how a box with a 4 pixel #BD977D colored shadow looks like.

```
.boxshadow{ -moz-box-shadow:4px 4px 4px  
4px #BD977D; -webkit-box-shadow:4px 4px  
4px 4px #BD977D; box-shadow:4px 4px 4px  
4px #BD977D }
```

Background

The CSS property to change the background color of an element to Decimal 12425085 is called "background". The background property can be set on classes, ids or directly on the HTML element.

```
.background, #background, body{  
background:#BD977D }
```

If only the background color should be changed can be used:

```
.background{ background-color:#BD977D }
```

This example shows the color as background, it is applied via the CSS property "background".

To optimize and compress your CSS code, you can use our [online CSS compressor and optimizer](#) based on csstidy. If you want to create a linear or radial gradient as background or border, check our [CSS Gradient Generator](#).

Hey! You found this booklet interesting? Support Converting Colors with the new Membership Option!

The pro membership hides all ads, plus gives you double the colors in the color bucket, and more awesome pro features!

[Learn more, Memberships starting at \\$2.50/m!](#)

**Follow me
on Twitter!**

@ConvertingColor