

Converting Colors

Decimal(12426883)

Have a look what the booklet for
Decimal(12426883) contains.

Decimal(12426883)	3
<i>Conversions</i>	4
<i>Details</i>	6
<i>Harmonies</i>	11
<i>Previews</i>	23
<i>Color Blindness Simulation</i>	26
<i>CSS Examples</i>	29

Color

Decimal(12426883)

Conversions

Conversions Part 1

Format	Color
Hex	BD9E83
RGB	189, 158, 131
RGB Percent	74%, 62%, 51%
CMY	0.2588, 0.3804, 0.4863
CMYK	0.00, 0.16, 0.31, 0.26
HSL	28°, 31%, 63%
HSV	28°, 31%, 74%
XYZ	37.3099, 36.9112, 26.6309
YIQ	164.1910, 27.1430, -1.8250

Conversions

Conversions Part 2

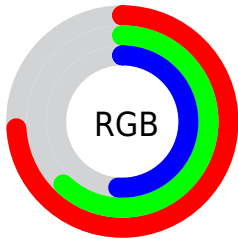
Format	Color
RYB	189, 182, 131
Decimal	12426883
CIELab	67.21, 7.43, 18.39
CIElCh	67, 19.836, 67.992
Yxy	36.9112, 0.3699, 0.3660
Android (android.graphics.Color)	4290616963 (0xFFBD9E83)
YUV	164.1910, -16.3632, 21.7575
Hunter-Lab	60.7546, 3.2976, 16.5394

Details

The Decimal color **12426883** is a light color, and the websafe version is hex **CC9999**. A complement of this color would be **8626877**, and the grayscale version is **10790052**.

A 20% lighter version of the original color is **16176568**, and **8874833** is the 20% darker color. If you saturate the color by 10%, you get **12424304**, and if you desaturate by 10%, it is **12429462**.

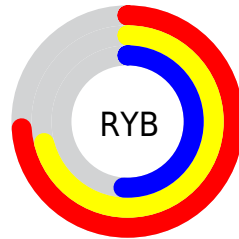
Distribution



Red (74%)

Green (62%)

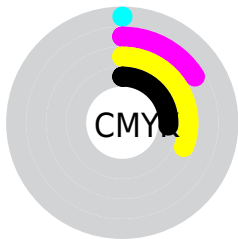
Blue (51%)



Red (74%)

Yellow (71%)

Blue (51%)

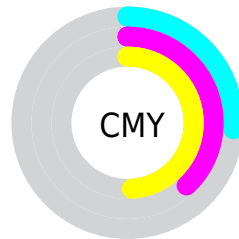


Cyan (0%)

Magenta (16%)

Yellow (31%)

Black (26%)



Cyan (26%)

Magenta (38%)

Yellow (49%)

Brightness & Saturation Gradients

These gradients show how the Decimal color 12426883 changes by changing the brightness by 10 percent. The first figure shows a shift by +10% for each color and the second figure -10%.


Similar to the brightness gradients but the following saturation gradients show a change of the Decimal color 12426883 by changing the saturation by 10% instead.

 12426883

 12426883

16777215

 10585194

 16176568

 8874833

 16773588

 7164730

 16777200

 5520164

 3876368

 2429440

 0

 12426883

 12426883

 12424304

 12429462

 12421725

 12432041

 12419146

 12434620

 12416567

 12437199

 12413732

 12440034

 12411154

 12442612

 12408832

 12445183

 12447743

 12450303

Harmonies

Analogous

The Analogous color harmony consists of three colors that are next to each other on the color wheel.



13080974



12426883



11314304

Triad

The Triadic color harmony groups three colors that are evenly spaced from another and form a triangle on the color wheel.



12426883



7777960



11378112

Complementary

The Complementary color scheme is a pair of colors which are on the opposite of each other on the color wheel.



12426883



8626877

Split Complementary

Split-complementary colors differ from the complementary color scheme. The scheme consists of three colors, the original color and two neighbors of the complement color.



9807047



12426883



7581113

Square

The Square scheme is like the rectangle color scheme, but the four colors are evenly spaced on the color wheel.



12426883



8695190



8366532



12556721

Rectangle

The Rectangle color scheme consists of four colors that form a rectangle on the color wheel.



12426883



10463364



8366532



10854339

Sweetspot

The Sweet Spot groups the original color and five complimentary colors.



12426883



16116191



12420003



8024941



16448250



8026746

Same Dimension

The Same Dimension uses a secret algorithm to generate beautiful new colors.



12426883



16106650



12434051



6183253



10373632



2035200

Inverse Universe

The Inverse Universe completely reimagines the original color for something new.



8626877



10144757



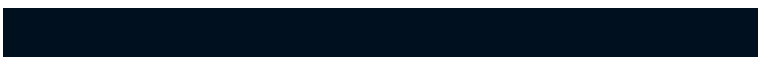
8619709



5593694



21918



4127

Previews

White Background



This preview shows how the Decimal color 12426883 looks on a white background.

Color Contrast Check

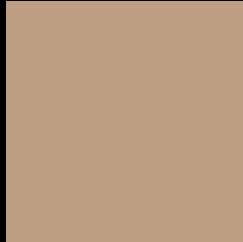
Large Text (above 18pt) WCAG AA × Fail

Any Text WCAG AA × Fail

Large Text (above 18pt) WCAG AAA × Fail

Any Text WCAG AAA × Fail

Black Background



This preview shows how the Decimal color 12426883 looks on a black background.

Color Contrast Check

Large Text (above 18pt) WCAG AA ✓ Pass

Any Text WCAG AA ✓ Pass

Large Text (above 18pt) WCAG AAA ✓ Pass

Any Text WCAG AAA ✓ Pass

If you want to check with other color combinations, try the [Color Contrast Checker](#).

Decimal 12426883 Background



This preview shows how black text looks on a background with the Decimal color 12426883.




This preview shows how white text looks on a background with the Decimal color 12426883.

Color Blindness Simulation

Color vision deficiency is a very complex topic, and I could not describe the different causes any better than Wikipedia does, so if you want to learn more, you should check out their [article about color blindness](#).

Dichromacy





Tritanopia
12687781

Trichromacy



Original Color
12426883

Protanomaly
11772293

Deuteranomaly
12492163

Tritanomaly
12622745

Monochromacy



Original Color
12426883

Achromatopsia
10790052

Achromatomaly
11379352

CSS Examples

Text

The CSS property to change the color of the text to Decimal 12426883 is called "color". The color property can be set on classes, ids or directly on the HTML element.

This example shows how text in the color #BD9E83 looks like.

```
.text, #text, p{  
    color:#BD9E83  
}
```

If you want to add a text shadow in that color use the text-shadow property, you can generate a text shadow directly with our [CSS Text Shadow Generator](#).

Here you see how black text with a 4 pixel #BD9E83 colored shadow looks like.

```
.shadow{ text-shadow: 4px 4px 2px #BD9E83
}
```

Border

The CSS property to change the border of an element to Decimal 12426883 is called "border". The border property can be set on classes, ids or directly on the HTML element.

This example shows the color as border, it can be applied via the CSS property "border" or "border-color".

```
.border, #border, table{ border:4px solid
#BD9E83 }
```

If only the border color should be changed use the property `border-color`.

```
.border{ border-color:#BD9E83 }
```

If you want to add a box shadow in that color use:

Here you see how a box with a 4 pixel #BD9E83 colored shadow looks like.

```
.boxshadow{ -moz-box-shadow:4px 4px 4px  
4px #BD9E83; -webkit-box-shadow:4px 4px  
4px 4px #BD9E83; box-shadow:4px 4px 4px  
4px #BD9E83 }
```

Background

The CSS property to change the background color of an element to Decimal 12426883 is called "background". The background property can be set on classes, ids or directly on the HTML element.

```
.background, #background, body{  
background:#BD9E83 }
```

If only the background color should be changed can be used:

```
.background{ background-color:#BD9E83 }
```

This example shows the color as background, it is applied via the CSS property "background".

To optimize and compress your CSS code, you can use our [online CSS compressor and optimizer](#) based on csstidy. If you want to create a linear or radial gradient as background or border, check our [CSS Gradient Generator](#).

Hey! You found this booklet interesting? Support Converting Colors with the new Membership Option!

The pro membership hides all ads, plus gives you double the colors in the color bucket, and more awesome pro features!

[Learn more, Memberships starting at \\$2.50/m!](#)

**Follow me
on Twitter!**

@ConvertingColor