

Converting Colors

Decimal(12426897)

Have a look what the booklet for
Decimal(12426897) contains.

Decimal(12426897)	3
<i>Conversions</i>	4
<i>Details</i>	6
<i>Harmonies</i>	11
<i>Previews</i>	23
<i>Color Blindness Simulation</i>	26
<i>CSS Examples</i>	29

Color

Decimal(12426897)

Conversions

Conversions Part 1

Format	Color
Hex	BD9E91
RGB	189, 158, 145
RGB Percent	74%, 62%, 57%
CMY	0.2588, 0.3804, 0.4314
CMYK	0.00, 0.16, 0.23, 0.26
HSL	18°, 25%, 65%
HSV	18°, 23%, 74%
XYZ	38.3240, 37.3169, 31.9710
YIQ	165.7870, 22.6490, 2.5290

Conversions

Conversions Part 2

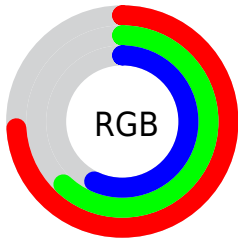
Format	Color
RYB	189, 163, 145
Decimal	12426897
CIELab	67.51, 9.41, 11.06
CIELCh	68, 14.521, 49.598
Yxy	37.3169, 0.3561, 0.3468
Android (android.graphics.Color)	4290616977 (0xFFBD9E91)
YUV	165.7870, -10.2480, 20.3578
Hunter-Lab	61.0875, 5.0808, 11.7310

Details

The Decimal color **12426897** is a light color, and the websafe version is hex **CC9999**. A complement of this color would be **9547965**, and the grayscale version is **10921638**.

A 20% lighter version of the original color is **16176583**, and **8874847** is the 20% darker color. If you saturate the color by 10%, you get **12423550**, and if you desaturate by 10%, it is **12430244**.

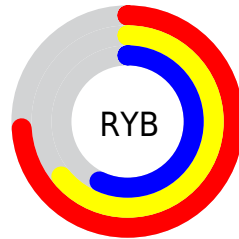
Distribution



Red (74%)

Green (62%)

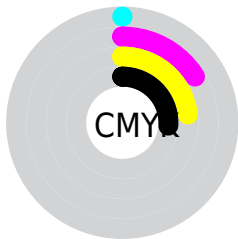
Blue (57%)



Red (74%)

Yellow (64%)

Blue (57%)

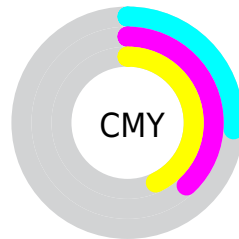


Cyan (0%)

Magenta (16%)

Yellow (23%)

Black (26%)



Cyan (26%)

Magenta (38%)

Yellow (43%)

Brightness & Saturation Gradients

These gradients show how the Decimal color 12426897 changes by changing the brightness by 10 percent. The first figure shows a shift by +10% for each color and the second figure -10%.

Similar to the brightness gradients but the following saturation gradients show a change of the Decimal color 12426897 by changing the saturation by 10% instead.


 12426897

 12426897

16777215

 10650743

 16176583

 8874847

 16773603

 7164487

 5520176

 3941916

 2560257

 0

 12426897

 12426897

 12423550

 12430244

 12419947

 12433847

 12416600

 12437194

 12413253

 12440541

 12409650

 12444143

 12406304

 12447487

 12402957

 12450815

 12400640

 12451839

Harmonies

Analogous

The Analogous color harmony consists of three colors that are next to each other on the color wheel.



12623004



12426897



11772555

Triad

The Triadic color harmony groups three colors that are evenly spaced from another and form a triangle on the color wheel.



12426897



9088159



10593213

Complementary

The Complementary color scheme is a pair of colors which are on the opposite of each other on the color wheel.



12426897



9547965

Split Complementary

Split-complementary colors differ from the complementary color scheme. The scheme consists of three colors, the original color and two neighbors of the complement color.



9545662



12426897



8629421

Square

The Square scheme is like the rectangle color scheme, but the four colors are evenly spaced on the color wheel.



12426897



9939603



8759992



11640501

Rectangle

The Rectangle color scheme consists of four colors that form a rectangle on the color wheel.



12426897



11249035



8759992



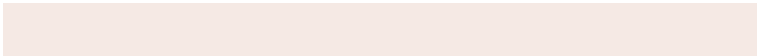
10200254

Sweetspot

The Sweet Spot groups the original color and five complimentary colors.



12426897



16116196



12423601



8025201



16448250



8026746

Same Dimension

The Same Dimension uses a secret algorithm to generate beautiful new colors.



12426897



16106928



12432273



6182997



10366720



2033920

Inverse Universe

The Inverse Universe completely reimagines the original color for something new.



9547965



11592181



9542589



5594206



28574



5663

Previews

White Background



This preview shows how the Decimal color 12426897 looks on a white background.

Color Contrast Check

Large Text (above 18pt) WCAG AA × Fail

Any Text WCAG AA × Fail

Large Text (above 18pt) WCAG AAA × Fail

Any Text WCAG AAA × Fail

Black Background



This preview shows how the Decimal color 12426897 looks on a black background.

Color Contrast Check

Large Text (above 18pt) WCAG AA ✓ Pass

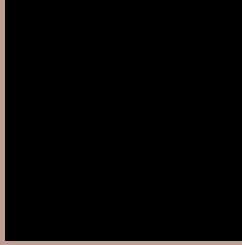
Any Text WCAG AA ✓ Pass

Large Text (above 18pt) WCAG AAA ✓ Pass

Any Text WCAG AAA ✓ Pass

If you want to check with other color combinations, try the [Color Contrast Checker](#).

Decimal 12426897 Background



This preview shows how black text looks on a background with the Decimal color 12426897.



This preview shows how white text looks on a background with the Decimal color 12426897.

Color Blindness Simulation

Color vision deficiency is a very complex topic, and I could not describe the different causes any better than Wikipedia does, so if you want to learn more, you should check out their [article about color blindness](#).

Dichromacy





Tritanopia
12622759

Trichromacy



Original Color
12426897

Protanomaly
11707027

Deuteranomaly
12361617

Tritanomaly
12557471

Monochromacy



Original Color
12426897

Achromatopsia
10921638

Achromatomaly
11445150

CSS Examples

Text

The CSS property to change the color of the text to Decimal 12426897 is called "color". The color property can be set on classes, ids or directly on the HTML element.

This example shows how text in the color #BD9E91 looks like.

```
.text, #text, p{  
    color:#BD9E91  
}
```

If you want to add a text shadow in that color use the text-shadow property, you can generate a text shadow directly with our [CSS Text Shadow Generator](#).

Here you see how black text with a 4 pixel #BD9E91 colored shadow looks like.

```
.shadow{ text-shadow: 4px 4px 2px #BD9E91
}
```

Border

The CSS property to change the border of an element to Decimal 12426897 is called "border". The border property can be set on classes, ids or directly on the HTML element.

This example shows the color as border, it can be applied via the CSS property "border" or "border-color".

```
.border, #border, table{ border:4px solid
#BD9E91 }
```

If only the border color should be changed use the property `border-color`.

```
.border{ border-color:#BD9E91 }
```

If you want to add a box shadow in that color use:

Here you see how a box with a 4 pixel #BD9E91 colored shadow looks like.

```
.boxshadow{ -moz-box-shadow:4px 4px 4px  
4px #BD9E91; -webkit-box-shadow:4px 4px  
4px 4px #BD9E91; box-shadow:4px 4px 4px  
4px #BD9E91 }
```

Background

The CSS property to change the background color of an element to Decimal 12426897 is called "background". The background property can be set on classes, ids or directly on the HTML element.

```
.background, #background, body{  
background:#BD9E91 }
```

If only the background color should be changed can be used:

```
.background{ background-color:#BD9E91 }
```

This example shows the color as background, it is applied via the CSS property "background".

To optimize and compress your CSS code, you can use our [online CSS compressor and optimizer](#) based on csstidy. If you want to create a linear or radial gradient as background or border, check our [CSS Gradient Generator](#).

Hey! You found this booklet interesting? Support Converting Colors with the new Membership Option!

The pro membership hides all ads, plus gives you double the colors in the color bucket, and more awesome pro features!

[Learn more, Memberships starting at \\$2.50/m!](#)

**Follow me
on Twitter!**

@ConvertingColor