

Converting Colors

Decimal(12429208)

Have a look what the booklet for
Decimal(12429208) contains.

Decimal(12429208)	3
<i>Conversions</i>	4
<i>Details</i>	6
<i>Harmonies</i>	11
<i>Previews</i>	23
<i>Color Blindness Simulation</i>	26
<i>CSS Examples</i>	29

Color

Decimal(12429208)

Conversions

Conversions Part 1

Format	Color
Hex	BDA798
RGB	189, 167, 152
RGB Percent	74%, 65%, 60%
CMY	0.2588, 0.3451, 0.4039
CMYK	0.00, 0.12, 0.20, 0.26
HSL	24°, 22%, 67%
HSV	24°, 20%, 74%
XYZ	40.4725, 40.7232, 35.4330
YIQ	171.8680, 17.9270, -0.0010

Conversions

Conversions Part 2

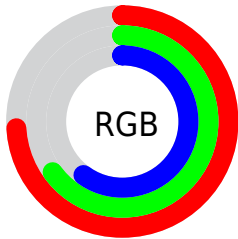
Format	Color
RYB	189, 177, 152
Decimal	12429208
CIELab	69.98, 5.55, 10.68
CIElCh	70, 12.036, 62.520
Yxy	40.7232, 0.3470, 0.3492
Android (android.graphics.Color)	4290619288 (0xFFBDA798)
YUV	171.8680, -9.7949, 15.0248
Hunter-Lab	63.8148, 1.5321, 11.7497

Details

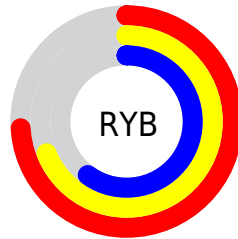
The Decimal color **12429208** is a light color, and the websafe version is hex **999999**. A complement of this color would be **10006205**, and the grayscale version is **11316396**.

A 20% lighter version of the original color is **16178894**, and **8876901** is the 20% darker color. If you saturate the color by 10%, you get **12426373**, and if you desaturate by 10%, it is **12432043**.

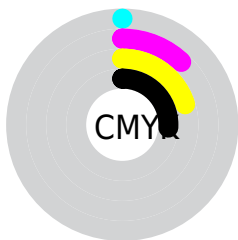
Distribution



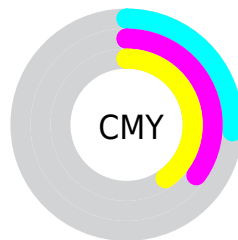
- Red (74%)
- Green (65%)
- Blue (60%)



- Red (74%)
- Yellow (69%)
- Blue (60%)



- Cyan (0%)
- Magenta (12%)
- Yellow (20%)
- Black (26%)



- Cyan (26%)
- Magenta (35%)
- Yellow (40%)

Brightness & Saturation Gradients

These gradients show how the Decimal color 12429208 changes by changing the brightness by 10 percent. The first figure shows a shift by +10% for each color and the second figure -10%.

Similar to the brightness gradients but the following saturation gradients show a change of the Decimal color 12429208 by changing the saturation by 10% instead.

 12429208

 12429208

16777215

 10653054

 16178894

 8876901

 16776170

 7232333

 5587766

 4009249

 2562059

 917504

 0

 12429208

 12429208

 12426373

 12432043

 12423538

 12434878

 12420447

 12437969

 12417612

 12440804

 12414777

 12443639

 12411943

 12446463

 12408852

 12449535

 12406017

 12451839

 12406016

Harmonies

Analogous

The Analogous color harmony consists of three colors that are next to each other on the color wheel.



12756128



12429208



11774869

Triad

The Triadic color harmony groups three colors that are evenly spaced from another and form a triangle on the color wheel.



12429208



9613996



11446461

Complementary

The Complementary color scheme is a pair of colors which are on the opposite of each other on the color wheel.



12429208



10006205

Split Complementary

Split-complementary colors differ from the complementary color scheme. The scheme consists of three colors, the original color and two neighbors of the complement color.



10595521



12429208



9417142

Square

The Square scheme is like the rectangle color scheme, but the four colors are evenly spaced on the color wheel.



12429208



10203297



9809854



12232117

Rectangle

The Rectangle color scheme consists of four colors that form a rectangle on the color wheel.



12429208



11251095



9809854



11184575

Sweetspot

The Sweet Spot groups the original color and five complimentary colors.



12429208



16116966



12425390



8025458



16448250



8026746

Same Dimension

The Same Dimension uses a secret algorithm to generate beautiful new colors.



12429208



16110524



12433816



6183253



10371072



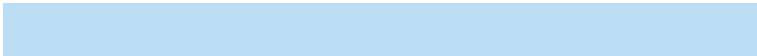
2034688

Inverse Universe

The Inverse Universe completely reimagines the original color for something new.



10006205



12377845



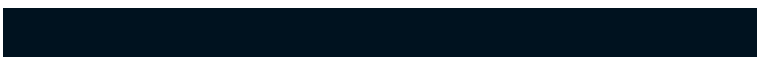
10001597



5593950



24222



4639

Previews

White Background



This preview shows how the Decimal color 12429208 looks on a white background.

Color Contrast Check

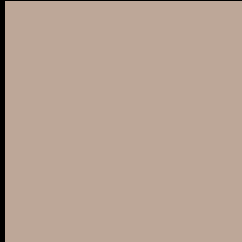
Large Text (above 18pt) WCAG AA × Fail

Any Text WCAG AA × Fail

Large Text (above 18pt) WCAG AAA × Fail

Any Text WCAG AAA × Fail

Black Background



This preview shows how the Decimal color 12429208 looks on a black background.

Color Contrast Check

Large Text (above 18pt) WCAG AA ✓ Pass

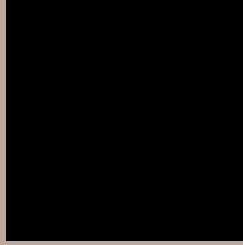
Any Text WCAG AA ✓ Pass

Large Text (above 18pt) WCAG AAA ✓ Pass

Any Text WCAG AAA ✓ Pass

If you want to check with other color combinations, try the [Color Contrast Checker](#).

Decimal 12429208 Background



This preview shows how black text looks on a background with the Decimal color 12429208.



This preview shows how white text looks on a background with the Decimal color 12429208.

Color Blindness Simulation

Color vision deficiency is a very complex topic, and I could not describe the different causes any better than Wikipedia does, so if you want to learn more, you should check out their [article about color blindness](#).


Dichromacy



Original Color
12429208

Protanopia
11709338

Deuteranopia
12756376



Tritanopia
12624816

Trichromacy



Original Color
12429208

Protanomaly
11971225

Deuteranomaly
12625560

Tritanomaly
12559527

Monochromacy



Original Color
12429208

Achromatopsia
11316396

Achromatomaly
11709093

CSS Examples

Text

The CSS property to change the color of the text to Decimal 12429208 is called "color". The color property can be set on classes, ids or directly on the HTML element.

This example shows how text in the color #BDA798 looks like.

```
.text, #text, p{  
  color:#BDA798  
}
```

If you want to add a text shadow in that color use the text-shadow property, you can generate a text shadow directly with our [CSS Text Shadow Generator](#).

Here you see how black text with a 4 pixel #BDA798 colored shadow looks like.

```
.shadow{ text-shadow: 4px 4px 2px #BDA798  
}
```

Border

The CSS property to change the border of an element to Decimal 12429208 is called "border". The border property can be set on classes, ids or directly on the HTML element.

This example shows the color as border, it can be applied via the CSS property "border" or "border-color".

```
.border, #border, table{ border:4px solid  
#BDA798 }
```

If only the border color should be changed use the property `border-color`.

```
.border{ border-color:#BDA798 }
```

If you want to add a box shadow in that color use:

Here you see how a box with a 4 pixel #BDA798 colored shadow looks like.

```
.boxshadow{ -moz-box-shadow:4px 4px 4px  
4px #BDA798; -webkit-box-shadow:4px 4px  
4px 4px #BDA798; box-shadow:4px 4px 4px  
4px #BDA798 }
```

Background

The CSS property to change the background color of an element to Decimal 12429208 is called "background". The background property can be set on classes, ids or directly on the HTML element.

```
.background, #background, body{  
background:#BDA798 }
```

If only the background color should be changed can be used:

```
.background{ background-color:#BDA798 }
```

This example shows the color as background, it is applied via the CSS property "background".

To optimize and compress your CSS code, you can use our [online CSS compressor and optimizer](#) based on csstidy. If you want to create a linear or radial gradient as background or border, check our [CSS Gradient Generator](#).

Hey! You found this booklet interesting? Support Converting Colors with the new Membership Option!

The pro membership hides all ads, plus gives you double the colors in the color bucket, and more awesome pro features!

[Learn more, Memberships starting at \\$2.50/m!](#)

**Follow me
on Twitter!**

@ConvertingColor