

Converting Colors

Decimal(12429486)

Have a look what the booklet for
Decimal(12429486) contains.

Decimal(12429486)	3
<i>Conversions</i>	4
<i>Details</i>	6
<i>Harmonies</i>	11
<i>Previews</i>	23
<i>Color Blindness Simulation</i>	26
<i>CSS Examples</i>	29

Color

Decimal(12429486)

Conversions

Conversions Part 1

Format	Color
Hex	BDA8AE
RGB	189, 168, 174
RGB Percent	74%, 66%, 68%
CMY	0.2588, 0.3412, 0.3176
CMYK	0.00, 0.11, 0.08, 0.26
HSL	343°, 14%, 70%
HSV	343°, 11%, 74%
XYZ	42.6289, 41.8801, 45.8813
YIQ	174.9630, 10.5900, 6.3180

Conversions

Conversions Part 2

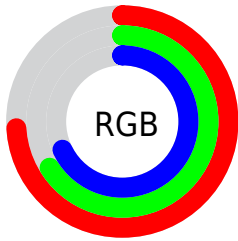
Format	Color
RYB	189, 168, 174
Decimal	12429486
CIELab	70.79, 8.64, -0.31
CIElCh	71, 8.648, 357.967
Yxy	41.8801, 0.3269, 0.3212
Android (android.graphics.Color)	4290619566 (0xFFBDA8AE)
YUV	174.9630, -0.4748, 12.3104
Hunter-Lab	64.7148, 4.3304, 3.2652

Details

The Decimal color **12429486** is a light color, and the websafe version is hex **999999**. A complement of this color would be **11058615**, and the grayscale version is **11513775**.

A 20% lighter version of the original color is **16113637**, and **8942714** is the 20% darker color. If you saturate the color by 10%, you get **12424609**, and if you desaturate by 10%, it is **12434364**.

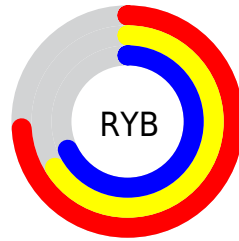
Distribution



Red (74%)

Green (66%)

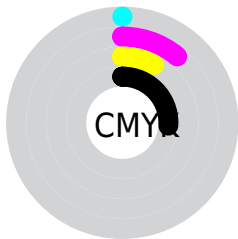
Blue (68%)



Red (74%)

Yellow (66%)

Blue (68%)

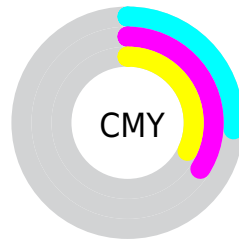


Cyan (0%)

Magenta (11%)

Yellow (8%)

Black (26%)



Cyan (26%)

Magenta (34%)

Yellow (32%)

Brightness & Saturation Gradients

These gradients show how the Decimal color 12429486 changes by changing the brightness by 10 percent. The first figure shows a shift by +10% for each color and the second figure -10%.


Similar to the brightness gradients but the following saturation gradients show a change of the Decimal color 12429486 by changing the saturation by 10% instead.

 12429486

 12429486

16777215

 10653331

 16113637

 8942714

 16776447

 7232353

 5653577

 4075059

 2627870

 1376260

 0

 12429486

 12429486

 12424609

 12434364

 12419731

 12439241

 12414854

 12444118

 12409976

 12448996

 12405355

 12451825

 12400477

 12451839

 12395600

 12390722

 12386358

Harmonies

Analogous

The Analogous color harmony consists of three colors that are next to each other on the color wheel.



12036534



12429486



12495014

Triad

The Triadic color harmony groups three colors that are evenly spaced from another and form a triangle on the color wheel.



12429486



11317151



10334394

Complementary

The Complementary color scheme is a pair of colors which are on the opposite of each other on the color wheel.



12429486



11058615

Split Complementary

Split-complementary colors differ from the complementary color scheme. The scheme consists of three colors, the original color and two neighbors of the complement color.



10138292



12429486



10727845

Square

The Square scheme is like the rectangle color scheme, but the four colors are evenly spaced on the color wheel.



12429486



11840670



10269356



10858173

Rectangle

The Rectangle color scheme consists of four colors that form a rectangle on the color wheel.



12429486



12429730



10269356



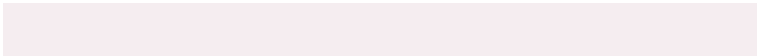
10203577

Sweetspot

The Sweet Spot groups the original color and five complimentary colors.



12429486



16117232



12036285



8025719



16448250



8026746

Same Dimension

The Same Dimension uses a secret algorithm to generate beautiful new colors.



12429486



16111070



12430504



6182232



10354733



2031625

Inverse Universe

The Inverse Universe completely reimagines the original color for something new.



12429486



16111070



11057597



6182232



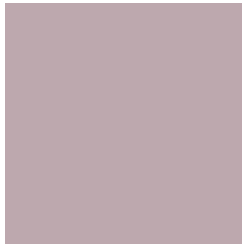
10354733



2031625

Previews

White Background



This preview shows how the Decimal color 12429486 looks on a white background.

Color Contrast Check

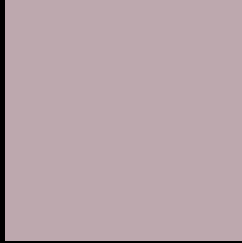
Large Text (above 18pt) WCAG AA × Fail

Any Text WCAG AA × Fail

Large Text (above 18pt) WCAG AAA × Fail

Any Text WCAG AAA × Fail

Black Background



This preview shows how the Decimal color 12429486 looks on a black background.

Color Contrast Check

Large Text (above 18pt) WCAG AA ✓ Pass

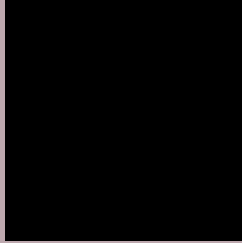
Any Text WCAG AA ✓ Pass

Large Text (above 18pt) WCAG AAA ✓ Pass

Any Text WCAG AAA ✓ Pass

If you want to check with other color combinations, try the [Color Contrast Checker](#).

Decimal 12429486 Background



This preview shows how black text looks on a background with the Decimal color 12429486.



This preview shows how white text looks on a background with the Decimal color 12429486.

Color Blindness Simulation

Color vision deficiency is a very complex topic, and I could not describe the different causes any better than Wikipedia does, so if you want to learn more, you should check out their [article about color blindness](#).

Dichromacy



Original Color
12429486

Protanopia
11513009

Deuteranopia
12495022



Tritanopia
12494772

Trichromacy



Original Color
12429486

Protanomaly
11840432

Deuteranomaly
12495022

Tritanomaly
12494770

Monochromacy



Original Color
12429486

Achromatopsia
11513775

Achromatomaly
11840687

CSS Examples

Text

The CSS property to change the color of the text to Decimal 12429486 is called "color". The color property can be set on classes, ids or directly on the HTML element.

This example shows how text in the color #BDA8AE looks like.

```
.text, #text, p{  
  color:#BDA8AE  
}
```

If you want to add a text shadow in that color use the text-shadow property, you can generate a text shadow directly with our [CSS Text Shadow Generator](#).

Here you see how black text with a 4 pixel #BDA8AE colored shadow looks like.

```
.shadow{ text-shadow: 4px 4px 2px #BDA8AE
}
```

Border

The CSS property to change the border of an element to Decimal 12429486 is called "border". The border property can be set on classes, ids or directly on the HTML element.

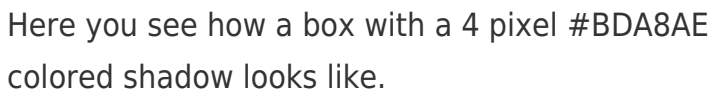
This example shows the color as border, it can be applied via the CSS property "border" or "border-color".

```
.border, #border, table{ border:4px solid
#BDA8AE }
```

If only the border color should be changed use the property `border-color`.

```
.border{ border-color:#BDA8AE }
```

If you want to add a box shadow in that color use:



Here you see how a box with a 4 pixel #BDA8AE colored shadow looks like.

```
.boxshadow{ -moz-box-shadow:4px 4px 4px  
4px #BDA8AE; -webkit-box-shadow:4px 4px  
4px 4px #BDA8AE; box-shadow:4px 4px 4px  
4px #BDA8AE }
```

Background

The CSS property to change the background color of an element to Decimal 12429486 is called "background". The background property can be set on classes, ids or directly on the HTML element.

```
.background, #background, body{  
background:#BDA8AE }
```

If only the background color should be changed can be used:

```
.background{ background-color:#BDA8AE }
```

This example shows the color as background, it is applied via the CSS property "background".

To optimize and compress your CSS code, you can use our [online CSS compressor and optimizer](#) based on csstidy. If you want to create a linear or radial gradient as background or border, check our [CSS Gradient Generator](#).

Hey! You found this booklet interesting? Support Converting Colors with the new Membership Option!

The pro membership hides all ads, plus gives you double the colors in the color bucket, and more awesome pro features!

[Learn more, Memberships starting at \\$2.50/m!](#)

**Follow me
on Twitter!**

@ConvertingColor