

Converting Colors

Decimal(12431528)

Have a look what the booklet for
Decimal(12431528) contains.

Decimal(12431528)	3
<i>Conversions</i>	4
<i>Details</i>	6
<i>Harmonies</i>	11
<i>Previews</i>	23
<i>Color Blindness Simulation</i>	26
<i>CSS Examples</i>	29

Color

Decimal(12431528)

Conversions

Conversions Part 1

Format	Color
Hex	BDB0A8
RGB	189, 176, 168
RGB Percent	74%, 69%, 66%
CMY	0.2588, 0.3098, 0.3412
CMYK	0.00, 0.07, 0.11, 0.26
HSL	23°, 14%, 70%
HSV	23°, 11%, 74%
XYZ	43.5795, 44.6966, 43.3762
YIQ	178.9750, 10.3160, 0.2680

Conversions

Conversions Part 2

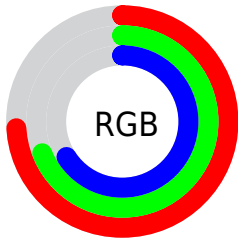
Format	Color
RYB	189, 181, 168
Decimal	12431528
CIELab	72.69, 3.26, 5.76
CIELCh	73, 6.615, 60.459
Yxy	44.6966, 0.3310, 0.3395
Android (android.graphics.Color)	4290621608 (0xFFBDB0A8)
YUV	178.9750, -5.4107, 8.7919
Hunter-Lab	66.8555, -0.6428, 8.3312

Details

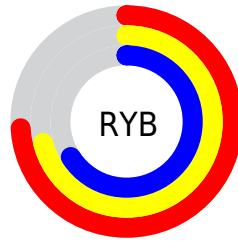
The Decimal color **12431528** is a light color, and the websafe version is hex **CCCCCC**. A complement of this color would be **11056573**, and the grayscale version is **11776947**.

A 20% lighter version of the original color is **16115935**, and **8944756** is the 20% darker color. If you saturate the color by 10%, you get **12428437**, and if you desaturate by 10%, it is **12434619**.

Distribution



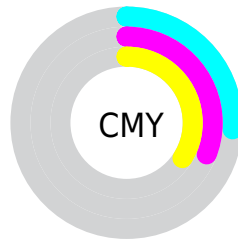
- Red (74%)
- Green (69%)
- Blue (66%)



- Red (74%)
- Yellow (71%)
- Blue (66%)



- Cyan (0%)
- Magenta (7%)
- Yellow (11%)
- Black (26%)



- Cyan (26%)
- Magenta (31%)
- Yellow (34%)

Brightness & Saturation Gradients

These gradients show how the Decimal color 12431528 changes by changing the brightness by 10 percent. The first figure shows a shift by +10% for each color and the second figure -10%.

Similar to the brightness gradients but the following saturation gradients show a change of the Decimal color 12431528 by changing the saturation by 10% instead.

 12431528

 12431528

16777215

 10655118

 16115935

 8944756


16777212

 7234395

 5655364

 4076590

 2629401

 1312512

 0

 12431528

 12431528

 12428437

 12434619

 12425602

 12437454

 12422511

 12440545

 12419420

 12443636

 12416330

 12446719

 12413495

 12449535

 12410404

 12451839

 12407313

 12404736

Harmonies

Analogous

The Analogous color harmony consists of three colors that are next to each other on the color wheel.



12627884



12431528



12104358

Triad

The Triadic color harmony groups three colors that are evenly spaced from another and form a triangle on the color wheel.



12431528



10860210



11841981

Complementary

The Complementary color scheme is a pair of colors which are on the opposite of each other on the color wheel.



12431528



11056573

Split Complementary

Split-complementary colors differ from the complementary color scheme. The scheme consists of three colors, the original color and two neighbors of the complement color.



11318206



12431528



10794680

Square

The Square scheme is like the rectangle color scheme, but the four colors are evenly spaced on the color wheel.



12431528



11187628



10925501



12300216

Rectangle

The Rectangle color scheme consists of four colors that form a rectangle on the color wheel.



12431528



11776935



10925501



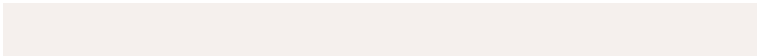
11645374

Sweetspot

The Sweet Spot groups the original color and five complimentary colors.



12431528



16117997



12429493



8025974



16448250



8026746

Same Dimension

The Same Dimension uses a secret algorithm to generate beautiful new colors.



12431528



16114133



12434088



6183253



10370048



2034688

Inverse Universe

The Inverse Universe completely reimagines the original color for something new.



11056573



14019061



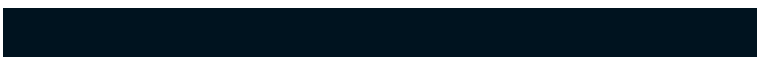
11054013



5593950



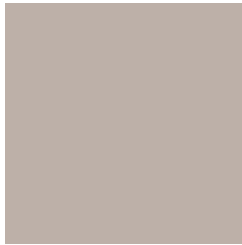
25246



4895

Previews

White Background



This preview shows how the Decimal color 12431528 looks on a white background.

Color Contrast Check

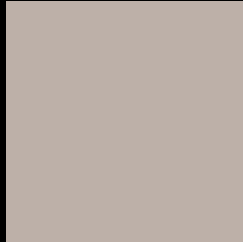
Large Text (above 18pt) WCAG AA × Fail

Any Text WCAG AA × Fail

Large Text (above 18pt) WCAG AAA × Fail

Any Text WCAG AAA × Fail

Black Background



This preview shows how the Decimal color 12431528 looks on a black background.

Color Contrast Check

Large Text (above 18pt) WCAG AA ✓ Pass

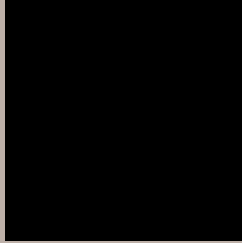
Any Text WCAG AA ✓ Pass

Large Text (above 18pt) WCAG AAA ✓ Pass

Any Text WCAG AAA ✓ Pass

If you want to check with other color combinations, try the [Color Contrast Checker](#).

Decimal 12431528 Background



This preview shows how black text looks on a background with the Decimal color 12431528.



This preview shows how white text looks on a background with the Decimal color 12431528.

Color Blindness Simulation

Color vision deficiency is a very complex topic, and I could not describe the different causes any better than Wikipedia does, so if you want to learn more, you should check out their [article about color blindness](#).


Dichromacy



Original Color
12431528

Protanopia
12104361

Deuteranopia
13085865



Tritanopia
12627387

Trichromacy



Original Color
12431528

Protanomaly
12235177

Deuteranomaly
12823977

Tritanomaly
12562100

Monochromacy



Original Color
12431528

Achromatopsia
11776947

Achromatomaly
12038831

CSS Examples

Text

The CSS property to change the color of the text to Decimal 12431528 is called "color". The color property can be set on classes, ids or directly on the HTML element.

This example shows how text in the color #BDB0A8 looks like.

```
.text, #text, p{  
    color:#BDB0A8  
}
```

If you want to add a text shadow in that color use the text-shadow property, you can generate a text shadow directly with our [CSS Text Shadow Generator](#).

Here you see how black text with a 4 pixel #BDB0A8 colored shadow looks like.

```
.shadow{ text-shadow: 4px 4px 2px #BDB0A8
}
```

Border

The CSS property to change the border of an element to Decimal 12431528 is called "border". The border property can be set on classes, ids or directly on the HTML element.

This example shows the color as border, it can be applied via the CSS property "border" or "border-color".

```
.border, #border, table{ border:4px solid
#BDB0A8 }
```

If only the border color should be changed use the property `border-color`.

```
.border{ border-color:#BDB0A8 }
```

If you want to add a box shadow in that color use:

Here you see how a box with a 4 pixel #BDB0A8 colored shadow looks like.

```
.boxshadow{ -moz-box-shadow:4px 4px 4px  
4px #BDB0A8; -webkit-box-shadow:4px 4px  
4px 4px #BDB0A8; box-shadow:4px 4px 4px  
4px #BDB0A8 }
```

Background

The CSS property to change the background color of an element to Decimal 12431528 is called "background". The background property can be set on classes, ids or directly on the HTML element.

```
.background, #background, body{  
background:#BDB0A8 }
```

If only the background color should be changed can be used:

```
.background{ background-color:#BDB0A8 }
```

This example shows the color as background, it is applied via the CSS property "background".

To optimize and compress your CSS code, you can use our [online CSS compressor and optimizer](#) based on csstidy. If you want to create a linear or radial gradient as background or border, check our [CSS Gradient Generator](#).

Hey! You found this booklet interesting? Support Converting Colors with the new Membership Option!

The pro membership hides all ads, plus gives you double the colors in the color bucket, and more awesome pro features!

[Learn more, Memberships starting at \\$2.50/m!](#)

**Follow me
on Twitter!**

@ConvertingColor