

Converting Colors

Decimal(12485219)

Have a look what the booklet for
Decimal(12485219) contains.

Decimal(12485219)	3
<i>Conversions</i>	4
<i>Details</i>	6
<i>Harmonies</i>	11
<i>Previews</i>	23
<i>Color Blindness Simulation</i>	26
<i>CSS Examples</i>	29

Color

Decimal(12485219)

Conversions

Conversions Part 1

Format	Color
Hex	BE8263
RGB	190, 130, 99
RGB Percent	75%, 51%, 39%
CMY	0.2549, 0.4902, 0.6118
CMYK	0.00, 0.32, 0.48, 0.25
HSL	20°, 41%, 57%
HSV	20°, 48%, 75%
XYZ	31.4700, 27.8133, 15.5142
YIQ	144.4060, 45.7110, 3.0790

Conversions

Conversions Part 2

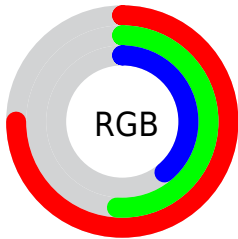
Format	Color
R_{YB}	190, 146, 99
Decimal	12485219
CIE Lab	59.72, 19.53, 26.09
CIE LCh	60, 32.588, 53.188
Yxy	27.8133, 0.4207, 0.3718
Android (android.graphics.Color)	4290675299 (0xFFBE8263)
YUV	144.4060, -22.3852, 39.9859
Hunter-Lab	52.7383, 14.2225, 19.4752

Details

The Decimal color **12485219** is a dark color, and the websafe version is hex **CC9966**. A complement of this color would be **6528958**, and the grayscale version is **9539985**.

A 20% lighter version of the original color is **16299926**, and **8802356** is the 20% darker color. If you saturate the color by 10%, you get **12481872**, and if you desaturate by 10%, it is **12488566**.

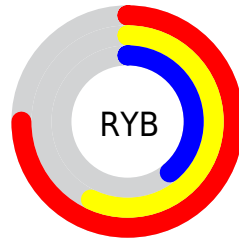
Distribution



Red (75%)

Green (51%)

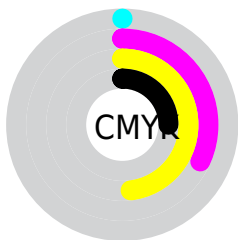
Blue (39%)



Red (75%)

Yellow (57%)

Blue (39%)

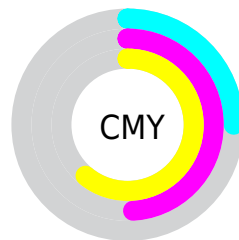


Cyan (0%)

Magenta (32%)

Yellow (48%)

Black (25%)



Cyan (25%)

Magenta (49%)

Yellow (61%)

Brightness & Saturation Gradients

These gradients show how the Decimal color 12485219 changes by changing the brightness by 10 percent. The first figure shows a shift by +10% for each color and the second figure -10%.

Similar to the brightness gradients but the following saturation gradients show a change of the Decimal color 12485219 by changing the saturation by 10% instead.


 12485219

 12485219

16777215

 10643787

 16299926

 8802356

 16765873

 7026974

 16773068

 5251847

 16777193

 3607808

 2097153

 0

 12485219

 12485219

 12481872

 12488566

12478781

12491657

12475434

12495004

12472343

12498095

12468996

12501442

12468480

12504533

12507880

12510971

12514303

Harmonies

Analogous

The Analogous color harmony consists of three colors that are next to each other on the color wheel.



13138811



12485219



11111511

Triad

The Triadic color harmony groups three colors that are evenly spaced from another and form a triangle on the color wheel.



12485219



4628360



9079748

Complementary

The Complementary color scheme is a pair of colors which are on the opposite of each other on the color wheel.



12485219



6528958

Split Complementary

Split-complementary colors differ from the complementary color scheme. The scheme consists of three colors, the original color and two neighbors of the complement color.



6002120



12485219



2138021

Square

The Square scheme is like the rectangle color scheme, but the four colors are evenly spaced on the color wheel.



12485219



7052141



2792637



11436467

Rectangle

The Rectangle color scheme consists of four colors that form a rectangle on the color wheel.



12485219



9867863



2792637



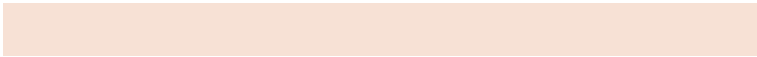
8097479

Sweetspot

The Sweet Spot groups the original color and five complimentary colors.



12485219



16245205



12477344



8220520



16579836



8224125

Same Dimension

The Same Dimension uses a secret algorithm to generate beautiful new colors.



12485219



16226922



12496739



6182997



10368512



2034176

Inverse Universe

The Inverse Universe completely reimagines the original color for something new.



6528958



6998007



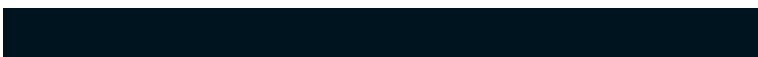
6517438



5593950



26782



5151

Previews

White Background



This preview shows how the Decimal color 12485219 looks on a white background.

Color Contrast Check

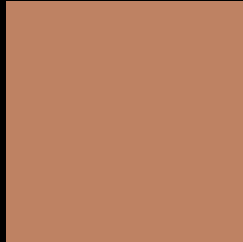
Large Text (above 18pt) WCAG AA ✓ Pass

Any Text WCAG AA × Fail

Large Text (above 18pt) WCAG AAA × Fail

Any Text WCAG AAA × Fail

Black Background



This preview shows how the Decimal color 12485219 looks on a black background.

Color Contrast Check

Large Text (above 18pt) WCAG AA ✓ Pass

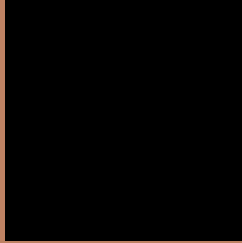
Any Text WCAG AA ✓ Pass

Large Text (above 18pt) WCAG AAA ✓ Pass

Any Text WCAG AAA × Fail

If you want to check with other color combinations, try the [Color Contrast Checker](#).

Decimal 12485219 Background



This preview shows how black text looks on a background with the Decimal color 12485219.



This preview shows how white text looks on a background with the Decimal color 12485219.

Color Blindness Simulation

Color vision deficiency is a very complex topic, and I could not describe the different causes any better than Wikipedia does, so if you want to learn more, you should check out their [article about color blindness](#).

Dichromacy



Original Color
12485219

Protanopia
10195049

Deuteranopia
11373153



Tritanopia
12680583

Trichromacy



Original Color
12485219

Protanomaly
11045735

Deuteranomaly
11765602

Tritanomaly
12615546

Monochromacy



Original Color
12485219

Achromatopsia
9474192

Achromatomaly
10587008

CSS Examples

Text

The CSS property to change the color of the text to Decimal 12485219 is called "color". The color property can be set on classes, ids or directly on the HTML element.

This example shows how text in the color #BE8263 looks like.

```
.text, #text, p{  
    color:#BE8263  
}
```

If you want to add a text shadow in that color use the text-shadow property, you can generate a text shadow directly with our [CSS Text Shadow Generator](#).

Here you see how black text with a 4 pixel #BE8263 colored shadow looks like.

```
.shadow{ text-shadow: 4px 4px 2px #BE8263  
}
```

Border

The CSS property to change the border of an element to Decimal 12485219 is called "border". The border property can be set on classes, ids or directly on the HTML element.

This example shows the color as border, it can be applied via the CSS property "border" or "border-color".

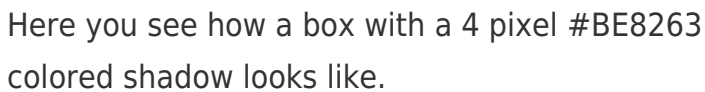
```
.border, #border, table{ border:4px solid  
#BE8263 }
```

If only the border color should be changed use the property `border-color`.

```
.border{ border-color:#BE8263 }
```

If you want to add a box shadow in that color use:

Here you see how a box with a 4 pixel #BE8263 colored shadow looks like.

A rectangular box with a 4px orange shadow. The box is white with a thin orange border. The shadow is a solid orange color, 4 pixels wide and 4 pixels high, positioned to the right and bottom of the box.

```
.boxshadow{ -moz-box-shadow:4px 4px 4px  
4px #BE8263; -webkit-box-shadow:4px 4px  
4px 4px #BE8263; box-shadow:4px 4px 4px  
4px #BE8263 }
```

Background

The CSS property to change the background color of an element to Decimal 12485219 is called "background". The background property can be set on classes, ids or directly on the HTML element.

```
.background, #background, body{  
background:#BE8263 }
```

If only the background color should be changed can be used:

```
.background{ background-color:#BE8263 }
```

This example shows the color as background, it is applied via the CSS property "background".

To optimize and compress your CSS code, you can use our [online CSS compressor and optimizer](#) based on csstidy. If you want to create a linear or radial gradient as background or border, check our [CSS Gradient Generator](#).

Hey! You found this booklet interesting? Support Converting Colors with the new Membership Option!

The pro membership hides all ads, plus gives you double the colors in the color bucket, and more awesome pro features!

[Learn more, Memberships starting at \\$2.50/m!](#)

**Follow me
on Twitter!**

@ConvertingColor