

Converting Colors

Decimal(12485751)

Have a look what the booklet for
Decimal(12485751) contains.

Decimal(12485751)	3
<i>Conversions</i>	4
<i>Details</i>	6
<i>Harmonies</i>	11
<i>Previews</i>	23
<i>Color Blindness Simulation</i>	26
<i>CSS Examples</i>	29

Color

Decimal(12485751)

Conversions

Conversions Part 1

Format	Color
Hex	BE8477
RGB	190, 132, 119
RGB Percent	75%, 52%, 47%
CMY	0.2549, 0.4824, 0.5333
CMYK	0.00, 0.31, 0.37, 0.25
HSL	11°, 35%, 61%
HSV	11°, 37%, 75%
XYZ	32.8162, 28.7816, 21.2786
YIQ	147.8600, 38.7410, 8.2530

Conversions

Conversions Part 2

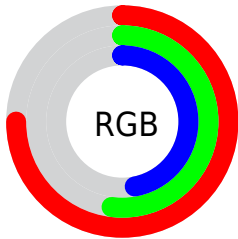
Format	Color
R _Y B	190, 135, 119
Decimal	12485751
CIE Lab	60.59, 20.65, 15.99
CIE LCh	61, 26.112, 37.752
Yxy	28.7816, 0.3960, 0.3473
Android (android.graphics.Color)	4290675831 (0xFFBE8477)
YUV	147.8600, -14.2280, 36.9568
Hunter-Lab	53.6485, 15.3019, 14.0378

Details

The Decimal color **12485751** is a dark color, and the websafe version is hex **CC9999**. A complement of this color would be **7844286**, and the grayscale version is **9737364**.

A 20% lighter version of the original color is **16300459**, and **8868423** is the 20% darker color. If you saturate the color by 10%, you get **12481636**, and if you desaturate by 10%, it is **12489866**.

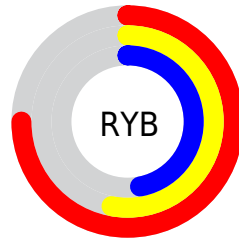
Distribution



Red (75%)

Green (52%)

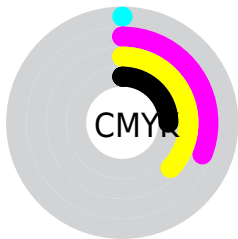
Blue (47%)



Red (75%)

Yellow (53%)

Blue (47%)

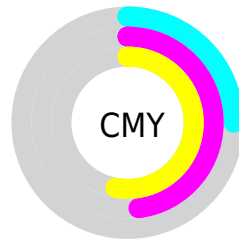


Cyan (0%)

Magenta (31%)

Yellow (37%)

Black (25%)



Cyan (25%)

Magenta (48%)

Yellow (53%)

Brightness & Saturation Gradients

These gradients show how the Decimal color 12485751 changes by changing the brightness by 10 percent. The first figure shows a shift by +10% for each color and the second figure -10%.

Similar to the brightness gradients but the following saturation gradients show a change of the Decimal color 12485751 by changing the saturation by 10% instead.

 12485751

 12485751

16777215

 10644318

 16300459


 8868423

 16766407

 7092784

 16773859

 5383195

 3804673

 2359297

 0

 12485751

 12485751

 12481636

 12489866

 12477777

 12493725

 12473662

 12497840

 12469803

 12501699

 12465688

 12505814

 12461829

 12509673

 12460800

 12513788

 12517375

Harmonies

Analogous

The Analogous color harmony consists of three colors that are next to each other on the color wheel.



12616077



12485751



11635560

Triad

The Triadic color harmony groups three colors that are evenly spaced from another and form a triangle on the color wheel.



12485751



6856064



8229567

Complementary

The Complementary color scheme is a pair of colors which are on the opposite of each other on the color wheel.



12485751



7844286

Split Complementary

Split-complementary colors differ from the complementary color scheme. The scheme consists of three colors, the original color and two neighbors of the complement color.



6068668



12485751



5349271

Square

The Square scheme is like the rectangle color scheme, but the four colors are evenly spaced on the color wheel.



12485751



8624493



4890285



10324663

Rectangle

The Rectangle color scheme consists of four colors that form a rectangle on the color wheel.



12485751



10784868



4890285



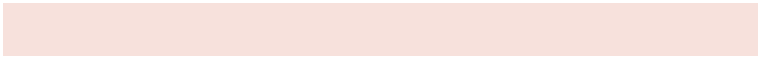
7509440

Sweetspot

The Sweet Spot groups the original color and five complimentary colors.



12485751



16245212



12482482



8220781



16579836



8224125

Same Dimension

The Same Dimension uses a secret algorithm to generate beautiful new colors.



12485751



16227464



12494455



6182741



10362112



2033152

Inverse Universe

The Inverse Universe completely reimagines the original color for something new.



7844286



8971255



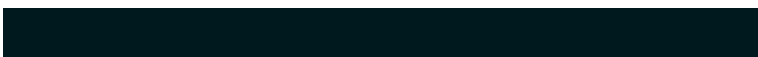
7835582



5594462



33182



6431

Previews

White Background



This preview shows how the Decimal color 12485751 looks on a white background.

Color Contrast Check

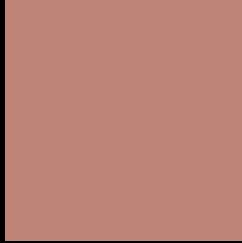
Large Text (above 18pt) WCAG AA ✓ Pass

Any Text WCAG AA × Fail

Large Text (above 18pt) WCAG AAA × Fail

Any Text WCAG AAA × Fail

Black Background



This preview shows how the Decimal color 12485751 looks on a black background.

Color Contrast Check

Large Text (above 18pt) WCAG AA ✓ Pass

Any Text WCAG AA ✓ Pass

Large Text (above 18pt) WCAG AAA ✓ Pass

Any Text WCAG AAA × Fail

If you want to check with other color combinations, try the [Color Contrast Checker](#).

Decimal 12485751 Background



This preview shows how black text looks on a background with the Decimal color 12485751.



This preview shows how white text looks on a background with the Decimal color 12485751.

Color Blindness Simulation

Color vision deficiency is a very complex topic, and I could not describe the different causes any better than Wikipedia does, so if you want to learn more, you should check out their [article about color blindness](#).

Dichromacy



Original Color
12485751

Protanopia
10130046

Deuteranopia
11242869



Tritanopia
12616075

Trichromacy



Original Color
12485751

Protanomaly
10980731

Deuteranomaly
11700854

Tritanomaly
12550788

Monochromacy



Original Color
12485751

Achromatopsia
9737364

Achromatomaly
10718857

CSS Examples

Text

The CSS property to change the color of the text to Decimal 12485751 is called "color". The color property can be set on classes, ids or directly on the HTML element.

This example shows how text in the color #BE8477 looks like.

```
.text, #text, p{  
  color:#BE8477  
}
```

If you want to add a text shadow in that color use the text-shadow property, you can generate a text shadow directly with our [CSS Text Shadow Generator](#).

Here you see how black text with a 4 pixel #BE8477 colored shadow looks like.

```
.shadow{ text-shadow: 4px 4px 2px #BE8477
}
```

Border

The CSS property to change the border of an element to Decimal 12485751 is called "border". The border property can be set on classes, ids or directly on the HTML element.

This example shows the color as border, it can be applied via the CSS property "border" or "border-color".

```
.border, #border, table{ border:4px solid
#BE8477 }
```

If only the border color should be changed use the property `border-color`.

```
.border{ border-color:#BE8477 }
```

If you want to add a box shadow in that color use:

Here you see how a box with a 4 pixel #BE8477 colored shadow looks like.

```
.boxshadow{ -moz-box-shadow:4px 4px 4px  
4px #BE8477; -webkit-box-shadow:4px 4px  
4px 4px #BE8477; box-shadow:4px 4px 4px  
4px #BE8477 }
```

Background

The CSS property to change the background color of an element to Decimal 12485751 is called "background". The background property can be set on classes, ids or directly on the HTML element.

```
.background, #background, body{  
background:#BE8477 }
```

If only the background color should be changed can be used:

```
.background{ background-color:#BE8477 }
```

This example shows the color as background, it is applied via the CSS property "background".

To optimize and compress your CSS code, you can use our [online CSS compressor and optimizer](#) based on csstidy. If you want to create a linear or radial gradient as background or border, check our [CSS Gradient Generator](#).

Hey! You found this booklet interesting? Support Converting Colors with the new Membership Option!

The pro membership hides all ads, plus gives you double the colors in the color bucket, and more awesome pro features!

[Learn more, Memberships starting at \\$2.50/m!](#)

**Follow me
on Twitter!**

@ConvertingColor