

Converting Colors

Decimal(12487506)

Have a look what the booklet for
Decimal(12487506) contains.

Decimal(12487506)	3
<i>Conversions</i>	4
<i>Details</i>	6
<i>Harmonies</i>	11
<i>Previews</i>	23
<i>Color Blindness Simulation</i>	26
<i>CSS Examples</i>	29

Color

Decimal(12487506)

Conversions

Conversions Part 1

Format	Color
Hex	BE8B52
RGB	190, 139, 82
RGB Percent	75%, 55%, 32%
CMY	0.2549, 0.4549, 0.6784
CMYK	0.00, 0.27, 0.57, 0.25
HSL	32°, 45%, 53%
HSV	32°, 57%, 75%
XYZ	31.9908, 30.0216, 12.0913
YIQ	147.7510, 48.6930, -6.9150

Conversions

Conversions Part 2

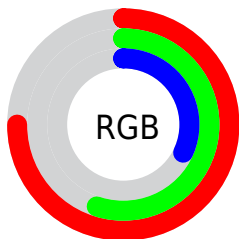
Format	Color
RYB	179, 190, 82
Decimal	12487506
CIELab	61.67, 13.01, 37.79
CIElCh	62, 39.962, 71.008
Yxy	30.0216, 0.4317, 0.4051
Android (android.graphics.Color)	4290677586 (0xFFBE8B52)
YUV	147.7510, -32.4152, 37.0524
Hunter-Lab	54.7920, 8.3330, 25.2705

Details

The Decimal color **12487506** is a dark color, and the websafe version is hex **CC9966**. A complement of this color would be **5408190**, and the grayscale version is **9737364**.

A 20% lighter version of the original color is **16367749**, and **8739106** is the 20% darker color. If you saturate the color by 10%, you get **12485183**, and if you desaturate by 10%, it is **12489829**.

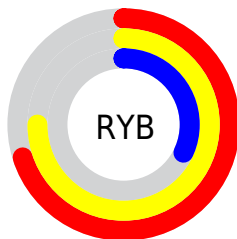
Distribution



Red (75%)

Green (55%)

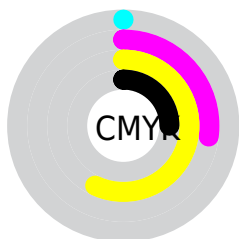
Blue (32%)



Red (70%)

Yellow (75%)

Blue (32%)

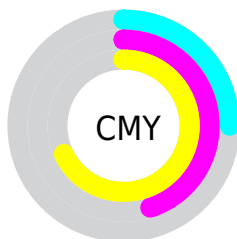


Cyan (0%)

Magenta (27%)

Yellow (57%)

Black (25%)



Cyan (25%)

Magenta (45%)

Yellow (68%)

Brightness & Saturation Gradients

These gradients show how the Decimal color 12487506 changes by changing the brightness by 10 percent. The first figure shows a shift by +10% for each color and the second figure -10%.

Similar to the brightness gradients but the following saturation gradients show a change of the Decimal color 12487506 by changing the saturation by 10% instead.

 12487506

 12487506

16777215

 10580538

 16367749

 8739106

 16768159

 6963721

 16775611

 5253888

 16777174

 3479296

 16777203

 1966080

 0

 12487506

 12487506

 12485183

 12489829

12482860

12492152

12480537

12494475

12478214

12496798

12477440

12499121

12501444

12503767

12506090

12508413

Harmonies

Analogous

The Analogous color harmony consists of three colors that are next to each other on the color wheel.



13860712



12487506



10393422

Triad

The Triadic color harmony groups three colors that are evenly spaced from another and form a triangle on the color wheel.



12487506



42913



11110347

Complementary

The Complementary color scheme is a pair of colors which are on the opposite of each other on the color wheel.



12487506



5408190

Split Complementary

Split-complementary colors differ from the complementary color scheme. The scheme consists of three colors, the original color and two neighbors of the complement color.



7640282



12487506



42434

Square

The Square scheme is like the rectangle color scheme, but the four colors are evenly spaced on the color wheel.



12487506



4761213



2269143



13335725

Rectangle

The Rectangle color scheme consists of four colors that form a rectangle on the color wheel.



12487506



8756823



2269143



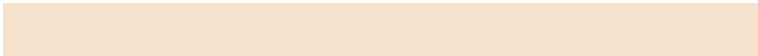
10128338

Sweetspot

The Sweet Spot groups the original color and five complimentary colors.



12487506



16245709



12472966



8221028



16579836



8224125

Same Dimension

The Same Dimension uses a secret algorithm to generate beautiful new colors.



12487506



16230479



12369490



6183509



10375936



2035712

Inverse Universe

The Inverse Universe completely reimagines the original color for something new.



5408190



5218295



5526206



5593438



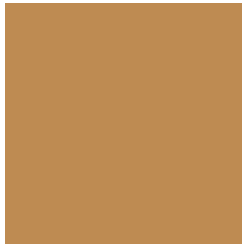
19358



3615

Previews

White Background



This preview shows how the Decimal color 12487506 looks on a white background.

Color Contrast Check

Large Text (above 18pt) WCAG AA ✓ Pass

Any Text WCAG AA × Fail

Large Text (above 18pt) WCAG AAA × Fail

Any Text WCAG AAA × Fail

Black Background



This preview shows how the Decimal color 12487506 looks on a black background.

Color Contrast Check

Large Text (above 18pt) WCAG AA ✓ Pass

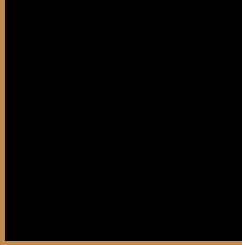
Any Text WCAG AA ✓ Pass

Large Text (above 18pt) WCAG AAA ✓ Pass

Any Text WCAG AAA ✓ Pass

If you want to check with other color combinations, try the [Color Contrast Checker](#).

Decimal 12487506 Background



This preview shows how black text looks on a background with the Decimal color 12487506.



This preview shows how white text looks on a background with the Decimal color 12487506.

Color Blindness Simulation

Color vision deficiency is a very complex topic, and I could not describe the different causes any better than Wikipedia does, so if you want to learn more, you should check out their [article about color blindness](#).

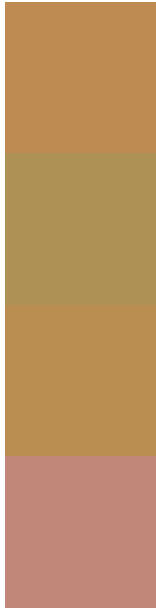
Dichromacy





Tritanopia
12813454

Trichromacy



Original Color
12487506

Protanomaly
11374933

Deuteranomaly
12225873

Tritanomaly
12683128

Monochromacy



Original Color
12487506

Achromatopsia
9737364

Achromatomaly
10719612

CSS Examples

Text

The CSS property to change the color of the text to Decimal 12487506 is called "color". The color property can be set on classes, ids or directly on the HTML element.

This example shows how text in the color #BE8B52 looks like.

```
.text, #text, p{  
    color:#BE8B52  
}
```

If you want to add a text shadow in that color use the text-shadow property, you can generate a text shadow directly with our [CSS Text Shadow Generator](#).

Here you see how black text with a 4 pixel #BE8B52 colored shadow looks like.

```
.shadow{ text-shadow: 4px 4px 2px #BE8B52
}
```

Border

The CSS property to change the border of an element to Decimal 12487506 is called "border". The border property can be set on classes, ids or directly on the HTML element.

This example shows the color as border, it can be applied via the CSS property "border" or "border-color".

```
.border, #border, table{ border:4px solid
#BE8B52 }
```

If only the border color should be changed use the property `border-color`.

```
.border{ border-color:#BE8B52 }
```

If you want to add a box shadow in that color use:

Here you see how a box with a 4 pixel #BE8B52 colored shadow looks like.

```
.boxshadow{ -moz-box-shadow:4px 4px 4px  
4px #BE8B52; -webkit-box-shadow:4px 4px  
4px 4px #BE8B52; box-shadow:4px 4px 4px  
4px #BE8B52 }
```

Background

The CSS property to change the background color of an element to Decimal 12487506 is called "background". The background property can be set on classes, ids or directly on the HTML element.

```
.background, #background, body{  
background:#BE8B52 }
```

If only the background color should be changed can be used:

```
.background{ background-color:#BE8B52 }
```

This example shows the color as background, it is applied via the CSS property "background".

To optimize and compress your CSS code, you can use our [online CSS compressor and optimizer](#) based on csstidy. If you want to create a linear or radial gradient as background or border, check our [CSS Gradient Generator](#).

Hey! You found this booklet interesting? Support Converting Colors with the new Membership Option!

The pro membership hides all ads, plus gives you double the colors in the color bucket, and more awesome pro features!

[Learn more, Memberships starting at \\$2.50/m!](#)

**Follow me
on Twitter!**

@ConvertingColor