

Converting Colors

Decimal(12488046)

Have a look what the booklet for
Decimal(12488046) contains.

Decimal(12488046)	3
<i>Conversions</i>	4
<i>Details</i>	6
<i>Harmonies</i>	11
<i>Previews</i>	23
<i>Color Blindness Simulation</i>	26
<i>CSS Examples</i>	29

Color

Decimal(12488046)

Conversions

Conversions Part 1

Format	Color
Hex	BE8D6E
RGB	190, 141, 110
RGB Percent	75%, 55%, 43%
CMY	0.2549, 0.4471, 0.5686
CMYK	0.00, 0.26, 0.42, 0.25
HSL	23°, 38%, 59%
HSV	23°, 42%, 75%
XYZ	33.5746, 31.1227, 18.9896
YIQ	152.1170, 39.1550, 0.7470

Conversions

Conversions Part 2

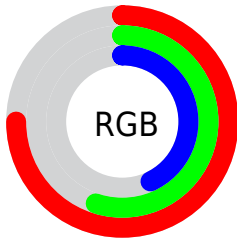
Format	Color
RYB	190, 161, 110
Decimal	12488046
CIELab	62.61, 14.61, 23.79
CIELCh	63, 27.921, 58.452
Yxy	31.1227, 0.4012, 0.3719
Android (android.graphics.Color)	4290678126 (0xFFBE8D6E)
YUV	152.1170, -20.7637, 33.2234
Hunter-Lab	55.7877, 9.7976, 18.8697

Details

The Decimal color **12488046** is a dark color, and the websafe version is hex **CC9966**. A complement of this color would be **7249854**, and the grayscale version is **10000536**.

A 20% lighter version of the original color is **16303010**, and **8870718** is the 20% darker color. If you saturate the color by 10%, you get **12484955**, and if you desaturate by 10%, it is **12491137**.

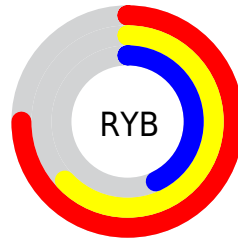
Distribution



Red (75%)

Green (55%)

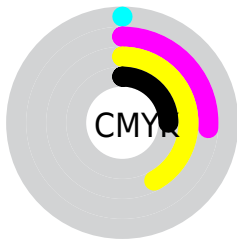
Blue (43%)



Red (75%)

Yellow (63%)

Blue (43%)

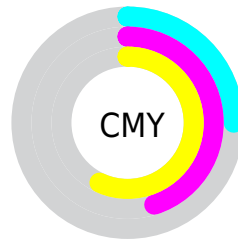


Cyan (0%)

Magenta (26%)

Yellow (42%)

Black (25%)



Cyan (25%)

Magenta (45%)

Yellow (57%)

Brightness & Saturation Gradients

These gradients show how the Decimal color 12488046 changes by changing the brightness by 10 percent. The first figure shows a shift by +10% for each color and the second figure -10%.

Similar to the brightness gradients but the following saturation gradients show a change of the Decimal color 12488046 by changing the saturation by 10% instead.

 12488046

 12488046

16777215

 10646357

 16303010

 8870718

 16768957

 7095080

 16776153

 5385490

 16777205

 3741440

 2228224

 0

 12488046

 12488046

 12484955

 12491137

 12482120

 12493972

 12479029

 12497063

 12475938

 12500154

 12473103

 12502989

 12470784

 12506080

 12508915

 12511999

 12515071

Harmonies

Analogous

The Analogous color harmony consists of three colors that are next to each other on the color wheel.



13141889



12488046



11179366

Triad

The Triadic color harmony groups three colors that are evenly spaced from another and form a triangle on the color wheel.



12488046



5744021



10064323

Complementary

The Complementary color scheme is a pair of colors which are on the opposite of each other on the color wheel.



12488046



7249854

Split Complementary

Split-complementary colors differ from the complementary color scheme. The scheme consists of three colors, the original color and two neighbors of the complement color.



7707337



12488046



4695214

Square

The Square scheme is like the rectangle color scheme, but the four colors are evenly spaced on the color wheel.



12488046



7578237



5480897



11962802

Rectangle

The Rectangle color scheme consists of four colors that form a rectangle on the color wheel.



12488046



10066792



5480897



9344198

Sweetspot

The Sweet Spot groups the original color and five complimentary colors.



12488046



16245975



12480159



8221033



16579836



8224125

Same Dimension

The Same Dimension uses a secret algorithm to generate beautiful new colors.



12488046



16231033



12498286



6183253



10370304



2034688

Inverse Universe

The Inverse Universe completely reimagines the original color for something new.



7249854



7980791



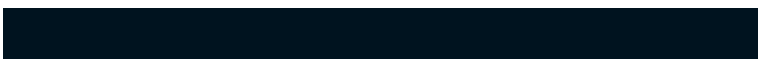
7239614



5593950



24990



4895

Previews

White Background



This preview shows how the Decimal color 12488046 looks on a white background.

Color Contrast Check

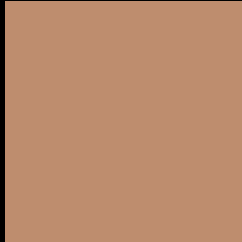
Large Text (above 18pt) WCAG AA × Fail

Any Text WCAG AA × Fail

Large Text (above 18pt) WCAG AAA × Fail

Any Text WCAG AAA × Fail

Black Background



This preview shows how the Decimal color 12488046 looks on a black background.

Color Contrast Check

Large Text (above 18pt) WCAG AA ✓ Pass

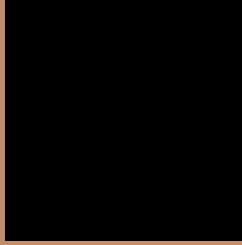
Any Text WCAG AA ✓ Pass

Large Text (above 18pt) WCAG AAA ✓ Pass

Any Text WCAG AAA ✓ Pass

If you want to check with other color combinations, try the [Color Contrast Checker](#).

Decimal 12488046 Background



This preview shows how black text looks on a background with the Decimal color 12488046.



This preview shows how white text looks on a background with the Decimal color 12488046.

Color Blindness Simulation

Color vision deficiency is a very complex topic, and I could not describe the different causes any better than Wikipedia does, so if you want to learn more, you should check out their [article about color blindness](#).


Dichromacy



Original Color
12488046

Protanopia
10655859

Deuteranopia
11833709



Tritanopia
12683410

Trichromacy



Original Color
12488046

Protanomaly
11310193

Deuteranomaly
12095597

Tritanomaly
12618373

Monochromacy



Original Color
12488046

Achromatopsia
10000536

Achromatomaly
10917001

CSS Examples

Text

The CSS property to change the color of the text to Decimal 12488046 is called "color". The color property can be set on classes, ids or directly on the HTML element.

This example shows how text in the color #BE8D6E looks like.

```
.text, #text, p{  
  color:#BE8D6E  
}
```

If you want to add a text shadow in that color use the text-shadow property, you can generate a text shadow directly with our [CSS Text Shadow Generator](#).

Here you see how black text with a 4 pixel #BE8D6E colored shadow looks like.

```
.shadow{ text-shadow: 4px 4px 2px #BE8D6E
}
```

Border

The CSS property to change the border of an element to Decimal 12488046 is called "border". The border property can be set on classes, ids or directly on the HTML element.

This example shows the color as border, it can be applied via the CSS property "border" or "border-color".

```
.border, #border, table{ border:4px solid
#BE8D6E }
```

If only the border color should be changed use the property `border-color`.

```
.border{ border-color:#BE8D6E }
```

If you want to add a box shadow in that color use:

Here you see how a box with a 4 pixel #BE8D6E colored shadow looks like.

```
.boxshadow{ -moz-box-shadow:4px 4px 4px  
4px #BE8D6E; -webkit-box-shadow:4px 4px  
4px 4px #BE8D6E; box-shadow:4px 4px 4px  
4px #BE8D6E }
```

Background

The CSS property to change the background color of an element to Decimal 12488046 is called "background". The background property can be set on classes, ids or directly on the HTML element.

```
.background, #background, body{  
background:#BE8D6E }
```

If only the background color should be changed can be used:

```
.background{ background-color:#BE8D6E }
```

This example shows the color as background, it is applied via the CSS property "background".

To optimize and compress your CSS code, you can use our [online CSS compressor and optimizer](#) based on csstidy. If you want to create a linear or radial gradient as background or border, check our [CSS Gradient Generator](#).

Hey! You found this booklet interesting? Support Converting Colors with the new Membership Option!

The pro membership hides all ads, plus gives you double the colors in the color bucket, and more awesome pro features!

[Learn more, Memberships starting at \\$2.50/m!](#)

**Follow me
on Twitter!**

@ConvertingColor