

Converting Colors

Decimal(12490897)

Have a look what the booklet for
Decimal(12490897) contains.

Decimal(12490897)	3
<i>Conversions</i>	4
<i>Details</i>	6
<i>Harmonies</i>	11
<i>Previews</i>	23
<i>Color Blindness Simulation</i>	26
<i>CSS Examples</i>	29

Color

Decimal(12490897)

Conversions

Conversions Part 1

Format	Color
Hex	BE9891
RGB	190, 152, 145
RGB Percent	75%, 60%, 57%
CMY	0.2549, 0.4039, 0.4314
CMYK	0.00, 0.20, 0.24, 0.25
HSL	9°, 26%, 66%
HSV	9°, 24%, 75%
XYZ	37.5743, 35.4480, 31.6498
YIQ	162.5640, 24.8950, 5.8790

Conversions

Conversions Part 2

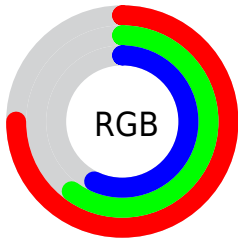
Format	Color
RYB	190, 153, 145
Decimal	12490897
CIELab	66.10, 13.10, 9.06
CIELCh	66, 15.927, 34.667
Yxy	35.4480, 0.3590, 0.3387
Android (android.graphics.Color)	4290680977 (0xFFBE9891)
YUV	162.5640, -8.6591, 24.0614
Hunter-Lab	59.5382, 8.4587, 10.1588

Details

The Decimal color **12490897** is a light color, and the websafe version is hex **CC9999**. A complement of this color would be **9549758**, and the grayscale version is **10724259**.

A 20% lighter version of the original color is **16240327**, and **8938847** is the 20% darker color. If you saturate the color by 10%, you get **12486782**, and if you desaturate by 10%, it is **12495012**.

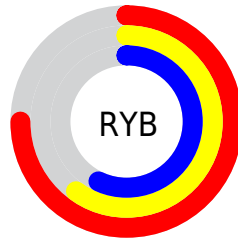
Distribution



Red (75%)

Green (60%)

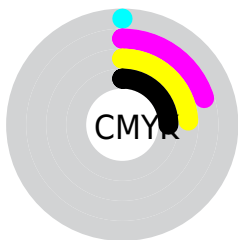
Blue (57%)



Red (75%)

Yellow (60%)

Blue (57%)

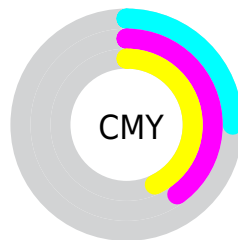


Cyan (0%)

Magenta (20%)

Yellow (24%)

Black (25%)



Cyan (25%)

Magenta (40%)

Yellow (43%)

Brightness & Saturation Gradients

These gradients show how the Decimal color 12490897 changes by changing the brightness by 10 percent. The first figure shows a shift by +10% for each color and the second figure -10%.

Similar to the brightness gradients but the following saturation gradients show a change of the Decimal color 12490897 by changing the saturation by 10% instead.

 12490897

 12490897

16777215

 10714743

 16240327

 8938847

 16772067

 7228743

 5584433

 4005916

 2558721

 0

 12490897

 12490897

 12486782

 12495012

 12482667

 12499127

 12478552

 12503242

 12474437

 12507357

 12470322

 12511472

 12466207

 12515583

 12462092

 12517375

 12459520

Harmonies

Analogous

The Analogous color harmony consists of three colors that are next to each other on the color wheel.



12490655



12490897



12033159

Triad

The Triadic color harmony groups three colors that are evenly spaced from another and form a triangle on the color wheel.



12490897



9087124



9740733

Complementary

The Complementary color scheme is a pair of colors which are on the opposite of each other on the color wheel.



12490897



9549758

Split Complementary

Split-complementary colors differ from the complementary color scheme. The scheme consists of three colors, the original color and two neighbors of the complement color.



8627642



12490897



8300962

Square

The Square scheme is like the rectangle color scheme, but the four colors are evenly spaced on the color wheel.



12490897



10134921



8104112



10919096

Rectangle

The Rectangle color scheme consists of four colors that form a rectangle on the color wheel.



12490897



11444100



8104112



9348029

Sweetspot

The Sweet Spot groups the original color and five complimentary colors.



12490897



16247270



12489143



8222067



16579836



8224125

Same Dimension

The Same Dimension uses a secret algorithm to generate beautiful new colors.



12490897



16235954



12496529



6182485



10361088



2032896

Inverse Universe

The Inverse Universe completely reimagines the original color for something new.



9549758



11726327



9544126



5594462



34462



6687

Previews

White Background



This preview shows how the Decimal color 12490897 looks on a white background.

Color Contrast Check

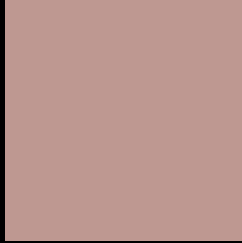
Large Text (above 18pt) WCAG AA × Fail

Any Text WCAG AA × Fail

Large Text (above 18pt) WCAG AAA × Fail

Any Text WCAG AAA × Fail

Black Background



This preview shows how the Decimal color 12490897 looks on a black background.

Color Contrast Check

Large Text (above 18pt) WCAG AA ✓ Pass

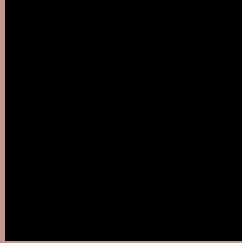
Any Text WCAG AA ✓ Pass

Large Text (above 18pt) WCAG AAA ✓ Pass

Any Text WCAG AAA ✓ Pass

If you want to check with other color combinations, try the [Color Contrast Checker](#).

Decimal 12490897 Background



This preview shows how black text looks on a background with the Decimal color 12490897.




This preview shows how white text looks on a background with the Decimal color 12490897.

Color Blindness Simulation

Color vision deficiency is a very complex topic, and I could not describe the different causes any better than Wikipedia does, so if you want to learn more, you should check out their [article about color blindness](#).

Dichromacy





Tritanopia
12621473

Trichromacy



Original Color
12490897

Protanomaly
11509140

Deuteranomaly
12163728

Tritanomaly
12556187

Monochromacy



Original Color
12490897

Achromatopsia
10724259

Achromatomaly
11378588

CSS Examples

Text

The CSS property to change the color of the text to Decimal 12490897 is called "color". The color property can be set on classes, ids or directly on the HTML element.

This example shows how text in the color #BE9891 looks like.

```
.text, #text, p{  
  color:#BE9891  
}
```

If you want to add a text shadow in that color use the text-shadow property, you can generate a text shadow directly with our [CSS Text Shadow Generator](#).

Here you see how black text with a 4 pixel #BE9891 colored shadow looks like.

```
.shadow{ text-shadow: 4px 4px 2px #BE9891
}
```

Border

The CSS property to change the border of an element to Decimal 12490897 is called "border". The border property can be set on classes, ids or directly on the HTML element.

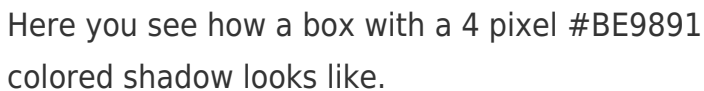
This example shows the color as border, it can be applied via the CSS property "border" or "border-color".

```
.border, #border, table{ border:4px solid
#BE9891 }
```

If only the border color should be changed use the property `border-color`.

```
.border{ border-color:#BE9891 }
```

If you want to add a box shadow in that color use:



Here you see how a box with a 4 pixel #BE9891 colored shadow looks like.

```
.boxshadow{ -moz-box-shadow:4px 4px 4px  
4px #BE9891; -webkit-box-shadow:4px 4px  
4px 4px #BE9891; box-shadow:4px 4px 4px  
4px #BE9891 }
```

Background

The CSS property to change the background color of an element to Decimal 12490897 is called "background". The background property can be set on classes, ids or directly on the HTML element.

```
.background, #background, body{  
background:#BE9891 }
```

If only the background color should be changed can be used:

```
.background{ background-color:#BE9891 }
```

This example shows the color as background, it is applied via the CSS property "background".

To optimize and compress your CSS code, you can use our [online CSS compressor and optimizer](#) based on csstidy. If you want to create a linear or radial gradient as background or border, check our [CSS Gradient Generator](#).

Hey! You found this booklet interesting? Support Converting Colors with the new Membership Option!

The pro membership hides all ads, plus gives you double the colors in the color bucket, and more awesome pro features!

[Learn more, Memberships starting at \\$2.50/m!](#)

**Follow me
on Twitter!**

@ConvertingColor