

Converting Colors

Decimal(12491167)

Have a look what the booklet for
Decimal(12491167) contains.

Decimal(12491167)	3
<i>Conversions</i>	4
<i>Details</i>	6
<i>Harmonies</i>	11
<i>Previews</i>	23
<i>Color Blindness Simulation</i>	26
<i>CSS Examples</i>	29

Color

Decimal(12491167)

Conversions

Conversions Part 1

Format	Color
Hex	BE999F
RGB	190, 153, 159
RGB Percent	75%, 60%, 62%
CMY	0.2549, 0.4000, 0.3765
CMYK	0.00, 0.19, 0.16, 0.25
HSL	350°, 22%, 67%
HSV	350°, 19%, 75%
XYZ	38.8844, 36.2328, 37.7451
YIQ	164.7470, 20.1260, 9.7100

Conversions

Conversions Part 2

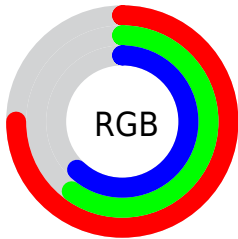
Format	Color
R_{YB}	190, 153, 159
Decimal	12491167
CIE Lab	66.70, 14.72, 2.09
CIE LCh	67, 14.871, 8.064
Yxy	36.2328, 0.3445, 0.3210
Android (android.graphics.Color)	4290681247 (0xFFBE999F)
YUV	164.7470, -2.8333, 22.1469
Hunter-Lab	60.1937, 9.9700, 4.9572

Details

The Decimal color **12491167** is a light color, and the websafe version is hex **CC9999**. A complement of this color would be **10075832**, and the grayscale version is **10855845**.

A 20% lighter version of the original color is **16240598**, and **8939116** is the 20% darker color. If you saturate the color by 10%, you get **12486287**, and if you desaturate by 10%, it is **12496047**.

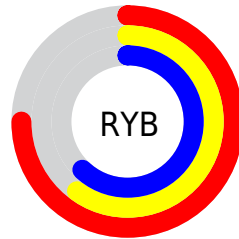
Distribution



Red (75%)

Green (60%)

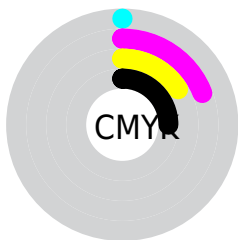
Blue (62%)



Red (75%)

Yellow (60%)

Blue (62%)

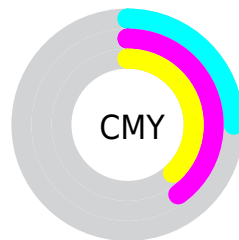


Cyan (0%)

Magenta (19%)

Yellow (16%)

Black (25%)



Cyan (25%)

Magenta (40%)

Yellow (38%)

Brightness & Saturation Gradients

These gradients show how the Decimal color 12491167 changes by changing the brightness by 10 percent. The first figure shows a shift by +10% for each color and the second figure -10%.

Similar to the brightness gradients but the following saturation gradients show a change of the Decimal color 12491167 by changing the saturation by 10% instead.

 12491167

 12491167

16777215

 10715013

 16240598

 8939116

 16772338

 7229011

 5650236

 4071719

 2558994

 65536

 0

 12491167

 12491167

 12486287

 12496047

 12481407

 12500927

 12476527

 12505807

 12471647

 12510687

 12466767

 12515567

 12461887

 12517375

 12457008

 12452128

 12451871

Harmonies

Analogous

The Analogous color harmony consists of three colors that are next to each other on the color wheel.



12032685



12491167



12425874

Triad

The Triadic color harmony groups three colors that are evenly spaced from another and form a triangle on the color wheel.



12491167



10135181



8955579

Complementary

The Complementary color scheme is a pair of colors which are on the opposite of each other on the color wheel.



12491167



10075832

Split Complementary

Split-complementary colors differ from the complementary color scheme. The scheme consists of three colors, the original color and two neighbors of the complement color.



8432050



12491167



9152920

Square

The Square scheme is like the rectangle color scheme, but the four colors are evenly spaced on the color wheel.



12491167



11117192



8497829



10003132

Rectangle

The Rectangle color scheme consists of four colors that form a rectangle on the color wheel.



12491167



12164492



8497829



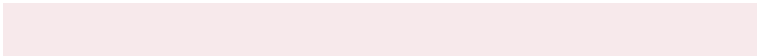
8759224

Sweetspot

The Sweet Spot groups the original color and five complimentary colors.



12491167



16247275



12097982



8221814



16579836



8224125

Same Dimension

The Same Dimension uses a secret algorithm to generate beautiful new colors.



12491167



16236232



12494233



6182230



10354714



2031621

Inverse Universe

The Inverse Universe completely reimagines the original color for something new.



12491167



16236232



10072766



6182230



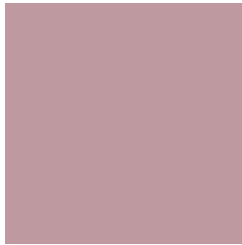
10354714



2031621

Previews

White Background



This preview shows how the Decimal color 12491167 looks on a white background.

Color Contrast Check

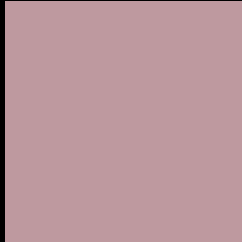
Large Text (above 18pt) WCAG AA × Fail

Any Text WCAG AA × Fail

Large Text (above 18pt) WCAG AAA × Fail

Any Text WCAG AAA × Fail

Black Background



This preview shows how the Decimal color 12491167 looks on a black background.

Color Contrast Check

Large Text (above 18pt) WCAG AA ✓ Pass

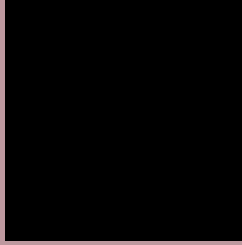
Any Text WCAG AA ✓ Pass

Large Text (above 18pt) WCAG AAA ✓ Pass

Any Text WCAG AAA ✓ Pass

If you want to check with other color combinations, try the [Color Contrast Checker](#).

Decimal 12491167 Background



This preview shows how black text looks on a background with the Decimal color 12491167.



This preview shows how white text looks on a background with the Decimal color 12491167.

Color Blindness Simulation

Color vision deficiency is a very complex topic, and I could not describe the different causes any better than Wikipedia does, so if you want to learn more, you should check out their [article about color blindness](#).


Dichromacy



Original Color
12491167

Protanopia
10855076

Deuteranopia
11836830



Tritanopia
12556452

Trichromacy



Original Color
12491167

Protanomaly
11444130

Deuteranomaly
12098718

Tritanomaly
12556450

Monochromacy



Original Color
12491167

Achromatopsia
10855845

Achromatomaly
11444643

CSS Examples

Text

The CSS property to change the color of the text to Decimal 12491167 is called "color". The color property can be set on classes, ids or directly on the HTML element.

This example shows how text in the color #BE999F looks like.

```
.text, #text, p{  
    color:#BE999F  
}
```

If you want to add a text shadow in that color use the text-shadow property, you can generate a text shadow directly with our [CSS Text Shadow Generator](#).

Here you see how black text with a 4 pixel #BE999F colored shadow looks like.

```
.shadow{ text-shadow: 4px 4px 2px #BE999F
}
```

Border

The CSS property to change the border of an element to Decimal 12491167 is called "border". The border property can be set on classes, ids or directly on the HTML element.

This example shows the color as border, it can be applied via the CSS property "border" or "border-color".

```
.border, #border, table{ border:4px solid
#BE999F }
```

If only the border color should be changed use the property `border-color`.

```
.border{ border-color:#BE999F }
```

If you want to add a box shadow in that color use:

Here you see how a box with a 4 pixel #BE999F colored shadow looks like.

```
.boxshadow{ -moz-box-shadow:4px 4px 4px  
4px #BE999F; -webkit-box-shadow:4px 4px  
4px 4px #BE999F; box-shadow:4px 4px 4px  
4px #BE999F }
```

Background

The CSS property to change the background color of an element to Decimal 12491167 is called "background". The background property can be set on classes, ids or directly on the HTML element.

```
.background, #background, body{  
background:#BE999F }
```

If only the background color should be changed can be used:

```
.background{ background-color:#BE999F }
```

This example shows the color as background, it is applied via the CSS property "background".

To optimize and compress your CSS code, you can use our [online CSS compressor and optimizer](#) based on csstidy. If you want to create a linear or radial gradient as background or border, check our [CSS Gradient Generator](#).

Hey! You found this booklet interesting? Support Converting Colors with the new Membership Option!

The pro membership hides all ads, plus gives you double the colors in the color bucket, and more awesome pro features!

[Learn more, Memberships starting at \\$2.50/m!](#)

**Follow me
on Twitter!**

@ConvertingColor