

Converting Colors

Decimal(12492176)

Have a look what the booklet for
Decimal(12492176) contains.

Decimal(12492176)	3
<i>Conversions</i>	4
<i>Details</i>	6
<i>Harmonies</i>	11
<i>Previews</i>	23
<i>Color Blindness Simulation</i>	26
<i>CSS Examples</i>	29

Color

Decimal(12492176)

Conversions

Conversions Part 1

Format	Color
Hex	BE9D90
RGB	190, 157, 144
RGB Percent	75%, 62%, 56%
CMY	0.2549, 0.3843, 0.4353
CMYK	0.00, 0.17, 0.24, 0.25
HSL	17°, 26%, 65%
HSV	17°, 24%, 75%
XYZ	38.3262, 37.0747, 31.5217
YIQ	165.3850, 23.8410, 2.9530

Conversions

Conversions Part 2

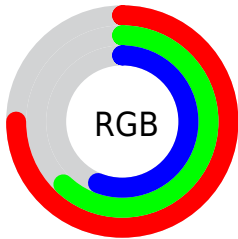
Format	Color
R _Y B	190, 162, 144
Decimal	12492176
CIE _{Lab}	67.33, 10.20, 11.37
CIE _{LCh}	67, 15.275, 48.111
Y _{xy}	37.0747, 0.3584, 0.3467
Android (android.graphics.Color)	4290682256 (0xFFBE9D90)
YUV	165.3850, -10.5428, 21.5874
Hunter-Lab	60.8890, 5.8000, 11.9284

Details

The Decimal color **12492176** is a light color, and the websafe version is hex **CC9999**. A complement of this color would be **9482686**, and the grayscale version is **10855845**.

A 20% lighter version of the original color is **16241862**, and **8940126** is the 20% darker color. If you saturate the color by 10%, you get **12488573**, and if you desaturate by 10%, it is **12495779**.

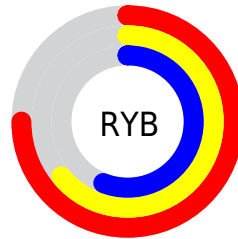
Distribution



Red (75%)

Green (62%)

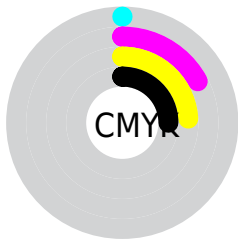
Blue (56%)



Red (75%)

Yellow (64%)

Blue (56%)

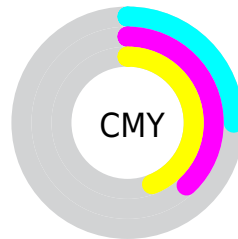


Cyan (0%)

Magenta (17%)

Yellow (24%)

Black (25%)



Cyan (25%)

Magenta (38%)

Yellow (44%)

Brightness & Saturation Gradients

These gradients show how the Decimal color 12492176 changes by changing the brightness by 10 percent. The first figure shows a shift by +10% for each color and the second figure -10%.

Similar to the brightness gradients but the following saturation gradients show a change of the Decimal color 12492176 by changing the saturation by 10% instead.

 12492176

 12492176

16777215

 10716022

 16241862

 8940126

 16773346

 7229766

16777214

 5585456

 4007195

 2560000

 0

 12492176

 12492176

 12488573

 12495779

 12485226

 12499126

 12481623

 12502729

 12478020

 12506332

 12474673

 12509679

 12471070

 12513279

 12467723

 12516607

 12465664

 12517375

Harmonies

Analogous

The Analogous color harmony consists of three colors that are next to each other on the color wheel.



12688284



12492176



11837833

Triad

The Triadic color harmony groups three colors that are evenly spaced from another and form a triangle on the color wheel.



12492176



8957086



10527422

Complementary

The Complementary color scheme is a pair of colors which are on the opposite of each other on the color wheel.



12492176



9482686

Split Complementary

Split-complementary colors differ from the complementary color scheme. The scheme consists of three colors, the original color and two neighbors of the complement color.



9349054



12492176



8432812

Square

The Square scheme is like the rectangle color scheme, but the four colors are evenly spaced on the color wheel.



12492176



9873809



8563384



11574966

Rectangle

The Rectangle color scheme consists of four colors that form a rectangle on the color wheel.



12492176



11248777



8563384



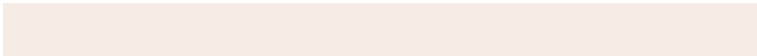
10134719

Sweetspot

The Sweet Spot groups the original color and five complimentary colors.



12492176



16247782



12488882



8222323



16579836



8224125

Same Dimension

The Same Dimension uses a secret algorithm to generate beautiful new colors.



12492176



16237744



12497808



6182997



10366208



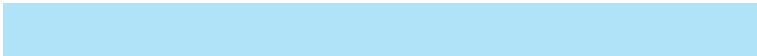
2033920

Inverse Universe

The Inverse Universe completely reimagines the original color for something new.



9482686



11592695



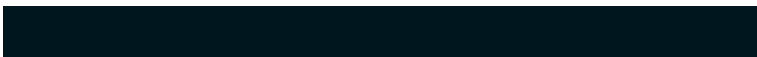
9477054



5594206



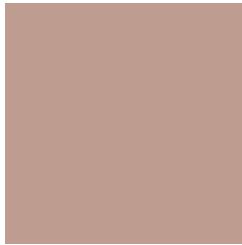
29086



5663

Previews

White Background



This preview shows how the Decimal color 12492176 looks on a white background.

Color Contrast Check

Large Text (above 18pt) WCAG AA × Fail

Any Text WCAG AA × Fail

Large Text (above 18pt) WCAG AAA × Fail

Any Text WCAG AAA × Fail

Black Background



This preview shows how the Decimal color 12492176 looks on a black background.

Color Contrast Check

Large Text (above 18pt) WCAG AA ✓ Pass

Any Text WCAG AA ✓ Pass

Large Text (above 18pt) WCAG AAA ✓ Pass

Any Text WCAG AAA ✓ Pass

If you want to check with other color combinations, try the [Color Contrast Checker](#).

Decimal 12492176 Background



This preview shows how black text looks on a background with the Decimal color 12492176.




This preview shows how white text looks on a background with the Decimal color 12492176.

Color Blindness Simulation

Color vision deficiency is a very complex topic, and I could not describe the different causes any better than Wikipedia does, so if you want to learn more, you should check out their [article about color blindness](#).

Dichromacy





Tritanopia
12688038

Trichromacy



Original Color
12492176

Protanomaly
11706770

Deuteranomaly
12361360

Tritanomaly
12622750

Monochromacy



Original Color
12492176

Achromatopsia
10855845

Achromatomaly
11444893

CSS Examples

Text

The CSS property to change the color of the text to Decimal 12492176 is called "color". The color property can be set on classes, ids or directly on the HTML element.

This example shows how text in the color #BE9D90 looks like.

```
.text, #text, p{  
    color:#BE9D90  
}
```

If you want to add a text shadow in that color use the text-shadow property, you can generate a text shadow directly with our [CSS Text Shadow Generator](#).

Here you see how black text with a 4 pixel #BE9D90 colored shadow looks like.

```
.shadow{ text-shadow: 4px 4px 2px #BE9D90
}
```

Border

The CSS property to change the border of an element to Decimal 12492176 is called "border". The border property can be set on classes, ids or directly on the HTML element.

This example shows the color as border, it can be applied via the CSS property "border" or "border-color".

```
.border, #border, table{ border:4px solid
#BE9D90 }
```

If only the border color should be changed use the property `border-color`.

```
.border{ border-color:#BE9D90 }
```

If you want to add a box shadow in that color use:

Here you see how a box with a 4 pixel #BE9D90 colored shadow looks like.

```
.boxshadow{ -moz-box-shadow:4px 4px 4px  
4px #BE9D90; -webkit-box-shadow:4px 4px  
4px 4px #BE9D90; box-shadow:4px 4px 4px  
4px #BE9D90 }
```

Background

The CSS property to change the background color of an element to Decimal 12492176 is called "background". The background property can be set on classes, ids or directly on the HTML element.

```
.background, #background, body{  
background:#BE9D90 }
```

If only the background color should be changed can be used:

```
.background{ background-color:#BE9D90 }
```

This example shows the color as background, it is applied via the CSS property "background".

To optimize and compress your CSS code, you can use our [online CSS compressor and optimizer](#) based on csstidy. If you want to create a linear or radial gradient as background or border, check our [CSS Gradient Generator](#).

Hey! You found this booklet interesting? Support Converting Colors with the new Membership Option!

The pro membership hides all ads, plus gives you double the colors in the color bucket, and more awesome pro features!

[Learn more, Memberships starting at \\$2.50/m!](#)

**Follow me
on Twitter!**

@ConvertingColor