

# Converting Colors

Decimal(12493971)

Have a look what the booklet for  
Decimal(12493971) contains.

<b>Decimal(12493971)</b> .....	3
<i><b>Conversions</b></i> .....	4
<i><b>Details</b></i> .....	6
<i><b>Harmonies</b></i> .....	11
<i><b>Previews</b></i> .....	23
<i><b>Color Blindness Simulation</b></i> .....	26
<i><b>CSS Examples</b></i> .....	29

# **Color**

**Decimal(12493971)**

# Conversions

## Conversions Part 1

Format	Color
Hex	BEA493
RGB	190, 164, 147
RGB Percent	75%, 64%, 58%
CMY	0.2549, 0.3569, 0.4235
CMYK	0.00, 0.14, 0.23, 0.25
HSL	24°, 25%, 66%
HSV	24°, 23%, 75%
XYZ	39.7771, 39.6047, 33.1517
YIQ	169.8360, 20.9530, 0.2250

# Conversions

## Conversions Part 2

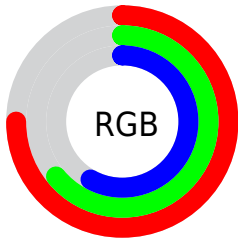
<b>Format</b>	<b>Color</b>
<b>RYB</b>	190, 175, 147
Decimal	12493971
CIELab	69.19, 6.81, 12.33
CIELCh	69, 14.083, 61.073
Yxy	39.6047, 0.3535, 0.3519
Android (android.graphics.Color)	4290684051 (0xFFBEA493)
YUV	169.8360, -11.2581, 17.6838
Hunter-Lab	62.9322, 2.6918, 12.8195

# Details

The Decimal color **12493971** is a light color, and the websafe version is hex **CC9999**, and the color name is **mocha**. A complement of this color would be **9678270**, and the grayscale version is **11184810**.

A 20% lighter version of the original color is **16243657**, and **8941664** is the 20% darker color. If you saturate the color by 10%, you get **12491136**, and if you desaturate by 10%, it is **12496806**.

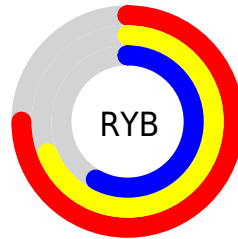
# Distribution



Red (75%)

Green (64%)

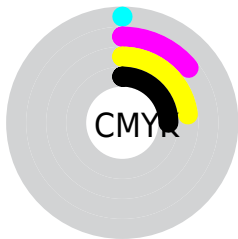
Blue (58%)



Red (75%)

Yellow (69%)

Blue (58%)

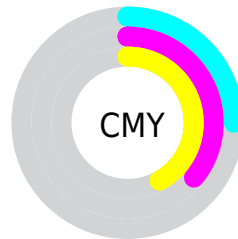


Cyan (0%)

Magenta (14%)

Yellow (23%)

Black (25%)



Cyan (25%)

Magenta (36%)

Yellow (42%)

# Brightness & Saturation Gradients

These gradients show how the Decimal color 12493971 changes by changing the brightness by 10 percent. The first figure shows a shift by +10% for each color and the second figure -10%.

Similar to the brightness gradients but the following saturation gradients show a change of the Decimal color 12493971 by changing the saturation by 10% instead.



 12493971

 12493971

16777215

 10717817

 16243657

 8941664

 16775141

 7231561

 5587250

 4074269

 2627076

 589824

 0

 12493971

 12493971

 12491136

 12496806

 12488045

 12499897

 12485210

 12502732

 12482119

 12505823

 12479284

 12508658

 12476193

 12511743

 12473358

 12514559

 12471040

 12517375

# Harmonies

## Analogous

The Analogous color harmony consists of three colors that are next to each other on the color wheel.



12886428



12493971



11774096

# Triad

The Triadic color harmony groups three colors that are evenly spaced from another and form a triangle on the color wheel.



12493971



9154729



11314623

# Complementary

The Complementary color scheme is a pair of colors which are on the opposite of each other on the color wheel.



12493971



9678270

# Split Complementary

Split-complementary colors differ from the complementary color scheme. The scheme consists of three colors, the original color and two neighbors of the complement color.



10267330



12493971



8958134

# Square

The Square scheme is like the rectangle color scheme, but the four colors are evenly spaced on the color wheel.



12493971



9875356



9350847



12231349

# Rectangle

The Rectangle color scheme consists of four colors that form a rectangle on the color wheel.



12493971



11119505



9350847



10987457

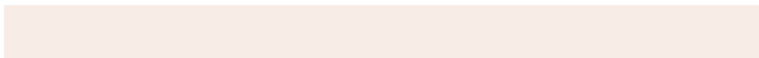


# Sweetspot

The Sweet Spot groups the original color and five complimentary colors.



12493971



16248294



12489646



8222579



16579836



8224125



# Same Dimension

The Same Dimension uses a secret algorithm to generate beautiful new colors.



12493971



16240565



12499347



6183253



10370816



2034688

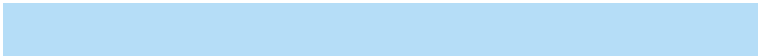


# Inverse Universe

The Inverse Universe completely reimagines the original color for something new.



9678270



11918839



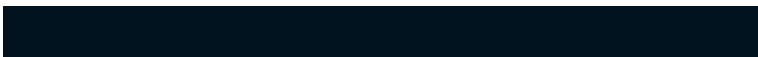
9672894



5593950



24734



4895



# Previews

## White Background



This preview shows how the Decimal color 12493971 looks on a white background.

## Color Contrast Check

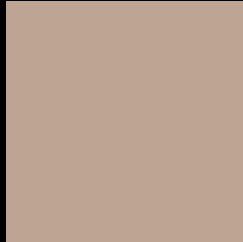
Large Text (above 18pt) WCAG AA × Fail

Any Text WCAG AA × Fail

Large Text (above 18pt) WCAG AAA × Fail

Any Text WCAG AAA × Fail

# Black Background



This preview shows how the Decimal color 12493971 looks on a black background.

## Color Contrast Check

Large Text (above 18pt) WCAG AA ✓ Pass

Any Text WCAG AA ✓ Pass

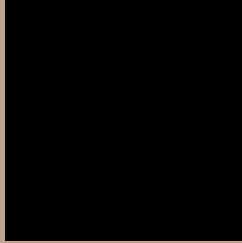
Large Text (above 18pt) WCAG AAA ✓ Pass

Any Text WCAG AAA ✓ Pass

If you want to check with other color combinations, try the [Color Contrast Checker](#).



## Decimal 12493971 Background



This preview shows how black text looks on a background with the Decimal color 12493971.



This preview shows how white text looks on a background with the Decimal color 12493971.

# Color Blindness Simulation

Color vision deficiency is a very complex topic, and I could not describe the different causes any better than Wikipedia does, so if you want to learn more, you should check out their [article about color blindness](#).


## Dichromacy



**Original Color**  
12493971

**Protanopia**  
11643285

**Deuteranopia**  
12690323



**Tritanopia**  
12689581

# Trichromacy



**Original Color**  
12493971

**Protanomaly**  
11970452

**Deuteranomaly**  
12624787

**Tritanomaly**  
12624292

# Monochromacy



**Original Color**  
12493971

**Achromatopsia**  
11184810

**Achromatomaly**  
11643042

# CSS Examples

## Text

The CSS property to change the color of the text to Decimal 12493971 is called "color". The color property can be set on classes, ids or directly on the HTML element.

This example shows how text in the color #BEA493 looks like.

```
.text, #text, p{  
  color:#BEA493  
}
```

If you want to add a text shadow in that color use the text-shadow property, you can generate a text shadow directly with our [CSS Text Shadow Generator](#).

Here you see how black text with a 4 pixel #BEA493 colored shadow looks like.

```
.shadow{ text-shadow: 4px 4px 2px #BEA493
}
```

## Border

The CSS property to change the border of an element to Decimal 12493971 is called "border". The border property can be set on classes, ids or directly on the HTML element.

This example shows the color as border, it can be applied via the CSS property "border" or "border-color".

```
.border, #border, table{ border:4px solid
#BEA493 }
```

If only the border color should be changed use the property `border-color`.

```
.border{ border-color:#BEA493 }
```

If you want to add a box shadow in that color use:

Here you see how a box with a 4 pixel #BEA493 colored shadow looks like.

```
.boxshadow{ -moz-box-shadow:4px 4px 4px  
4px #BEA493; -webkit-box-shadow:4px 4px  
4px 4px #BEA493; box-shadow:4px 4px 4px  
4px #BEA493 }
```

# Background

The CSS property to change the background color of an element to Decimal 12493971 is called "background". The background property can be set on classes, ids or directly on the HTML element.

```
.background, #background, body{  
background:#BEA493 }
```

If only the background color should be changed can be used:

```
.background{ background-color:#BEA493 }
```

This example shows the color as background, it is applied via the CSS property "background".

To optimize and compress your CSS code, you can use our [online CSS compressor and optimizer](#) based on csstidy. If you want to create a linear or radial gradient as background or border, check our [CSS Gradient Generator](#).



Hey! You found this booklet interesting? Support Converting Colors with the new Membership Option!

The pro membership hides all ads, plus gives you double the colors in the color bucket, and more awesome pro features!

**[Learn more, Memberships starting at \\$2.50/m!](#)**

**Follow me  
on Twitter!**

@ConvertingColor