

Converting Colors

Decimal(12495016)

Have a look what the booklet for
Decimal(12495016) contains.

Decimal(12495016)	3
<i>Conversions</i>	4
<i>Details</i>	6
<i>Harmonies</i>	11
<i>Previews</i>	23
<i>Color Blindness Simulation</i>	26
<i>CSS Examples</i>	29

Color

Decimal(12495016)

Conversions

Conversions Part 1

Format	Color
Hex	BEA8A8
RGB	190, 168, 168
RGB Percent	75%, 66%, 66%
CMY	0.2549, 0.3412, 0.3412
CMYK	0.00, 0.12, 0.12, 0.25
HSL	0°, 14%, 70%
HSV	0°, 12%, 75%
XYZ	42.3057, 41.7796, 42.8803
YIQ	174.5780, 13.1120, 4.6640

Conversions

Conversions Part 2

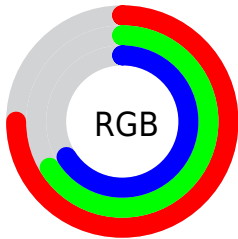
Format	Color
RYB	190, 168, 168
Decimal	12495016
CIELab	70.72, 7.97, 2.92
CIELCh	71, 8.489, 20.094
Yxy	41.7796, 0.3332, 0.3291
Android (android.graphics.Color)	4290685096 (0xFFBEA8A8)
YUV	174.5780, -3.2430, 13.5251
Hunter-Lab	64.6371, 3.7153, 5.9130

Details

The Decimal color **12495016** is a light color, and the websafe version is hex **999999**. A complement of this color would be **11058878**, and the grayscale version is **11513775**.

A 20% lighter version of the original color is **16179167**, and **8942708** is the 20% darker color. If you saturate the color by 10%, you get **12490133**, and if you desaturate by 10%, it is **12499899**.

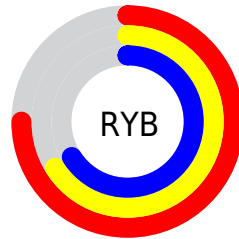
Distribution



Red (75%)

Green (66%)

Blue (66%)



Red (75%)

Yellow (66%)

Blue (66%)

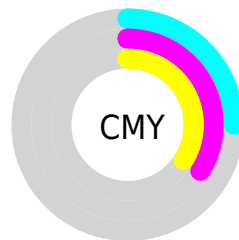


Cyan (0%)

Magenta (12%)

Yellow (12%)

Black (25%)



Cyan (25%)

Magenta (34%)

Yellow (34%)

Brightness & Saturation Gradients

These gradients show how the Decimal color 12495016 changes by changing the brightness by 10 percent. The first figure shows a shift by +10% for each color and the second figure -10%.

Similar to the brightness gradients but the following saturation gradients show a change of the Decimal color 12495016 by changing the saturation by 10% instead.

 12495016

 12495016

16777215

 10718862

 16179167

 8942708

 16776444

 7297884

 5653572

 4140590

 2693401

 1376256

 0

 12495016

 12495016

 12490133

 12499899

 12485250

 12504782

 12480367

 12509665

 12475484

 12514548

 12470601

 12517375

 12465718

 12460835

 12455952

 12451840

Harmonies

Analogous

The Analogous color harmony consists of three colors that are next to each other on the color wheel.



12298416



12495016



12364193

Triad

The Triadic color harmony groups three colors that are evenly spaced from another and form a triangle on the color wheel.



12495016



10858659



10661564

Complementary

The Complementary color scheme is a pair of colors which are on the opposite of each other on the color wheel.



12495016



11058878

Split Complementary

Split-complementary colors differ from the complementary color scheme. The scheme consists of three colors, the original color and two neighbors of the complement color.



10269113



12495016



10400426

Square

The Square scheme is like the rectangle color scheme, but the four colors are evenly spaced on the color wheel.



12495016



11447967



10138290



11316411

Rectangle

The Rectangle color scheme consists of four colors that form a rectangle on the color wheel.



12495016



12168095



10138290



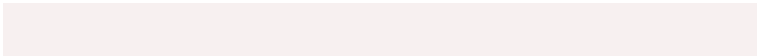
10530747

Sweetspot

The Sweet Spot groups the original color and five complimentary colors.



12495016



16249072



12495038



8222840



16579836



8224125

Same Dimension

The Same Dimension uses a secret algorithm to generate beautiful new colors.



12495016



16242133



12497832



6182229



10354688



2031616

Inverse Universe

The Inverse Universe completely reimagines the original color for something new.



11058878



14022647



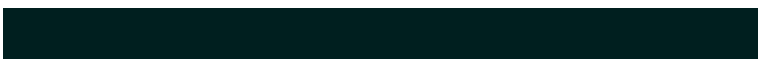
11056062



5594718



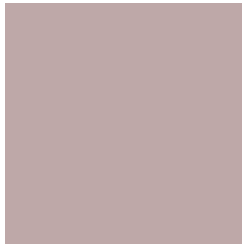
40606



7967

Previews

White Background



This preview shows how the Decimal color 12495016 looks on a white background.

Color Contrast Check

Large Text (above 18pt) WCAG AA × Fail

Any Text WCAG AA × Fail

Large Text (above 18pt) WCAG AAA × Fail

Any Text WCAG AAA × Fail

Black Background



This preview shows how the Decimal color 12495016 looks on a black background.

Color Contrast Check

Large Text (above 18pt) WCAG AA ✓ Pass

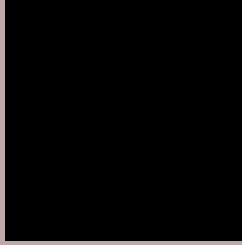
Any Text WCAG AA ✓ Pass

Large Text (above 18pt) WCAG AAA ✓ Pass

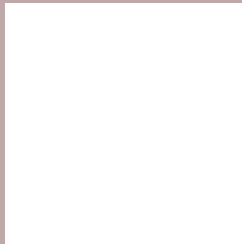
Any Text WCAG AAA ✓ Pass

If you want to check with other color combinations, try the [Color Contrast Checker](#).

Decimal 12495016 Background



This preview shows how black text looks on a background with the Decimal color 12495016.



This preview shows how white text looks on a background with the Decimal color 12495016.

Color Blindness Simulation

Color vision deficiency is a very complex topic, and I could not describe the different causes any better than Wikipedia does, so if you want to learn more, you should check out their [article about color blindness](#).


Dichromacy



Original Color
12495016

Protanopia
11644074

Deuteranopia
12625832



Tritanopia
12625587

Trichromacy



Original Color
12495016

Protanomaly
11971497

Deuteranomaly
12560296

Tritanomaly
12560303

Monochromacy



Original Color
12495016

Achromatopsia
11513775

Achromatomaly
11840684

CSS Examples

Text

The CSS property to change the color of the text to Decimal 12495016 is called "color". The color property can be set on classes, ids or directly on the HTML element.

This example shows how text in the color #BEA8A8 looks like.

```
.text, #text, p{  
  color:#BEA8A8  
}
```

If you want to add a text shadow in that color use the text-shadow property, you can generate a text shadow directly with our [CSS Text Shadow Generator](#).

Here you see how black text with a 4 pixel #BEA8A8 colored shadow looks like.

```
.shadow{ text-shadow: 4px 4px 2px #BEA8A8  
}
```

Border

The CSS property to change the border of an element to Decimal 12495016 is called "border". The border property can be set on classes, ids or directly on the HTML element.

This example shows the color as border, it can be applied via the CSS property "border" or "border-color".

```
.border, #border, table{ border:4px solid  
#BEA8A8 }
```

If only the border color should be changed use the property `border-color`.

```
.border{ border-color:#BEA8A8 }
```

If you want to add a box shadow in that color use:

Here you see how a box with a 4 pixel #BEA8A8 colored shadow looks like.

```
.boxshadow{ -moz-box-shadow:4px 4px 4px  
4px #BEA8A8; -webkit-box-shadow:4px 4px  
4px 4px #BEA8A8; box-shadow:4px 4px 4px  
4px #BEA8A8 }
```

Background

The CSS property to change the background color of an element to Decimal 12495016 is called "background". The background property can be set on classes, ids or directly on the HTML element.

```
.background, #background, body{  
background:#BEA8A8 }
```

If only the background color should be changed can be used:

```
.background{ background-color:#BEA8A8 }
```

This example shows the color as background, it is applied via the CSS property "background".

To optimize and compress your CSS code, you can use our [online CSS compressor and optimizer](#) based on csstidy. If you want to create a linear or radial gradient as background or border, check our [CSS Gradient Generator](#).

Hey! You found this booklet interesting? Support Converting Colors with the new Membership Option!

The pro membership hides all ads, plus gives you double the colors in the color bucket, and more awesome pro features!

[Learn more, Memberships starting at \\$2.50/m!](#)

**Follow me
on Twitter!**

@ConvertingColor