

# Converting Colors

Decimal(12495023)

Have a look what the booklet for  
Decimal(12495023) contains.

<b>Decimal(12495023)</b> .....	3
<i><b>Conversions</b></i> .....	4
<i><b>Details</b></i> .....	6
<i><b>Harmonies</b></i> .....	11
<i><b>Previews</b></i> .....	23
<i><b>Color Blindness Simulation</b></i> .....	26
<i><b>CSS Examples</b></i> .....	29

# **Color**

**Decimal(12495023)**

# Conversions

## Conversions Part 1

Format	Color
Hex	BEA8AF
RGB	190, 168, 175
RGB Percent	75%, 66%, 69%
CMY	0.2549, 0.3412, 0.3137
CMYK	0.00, 0.12, 0.08, 0.25
HSL	341°, 14%, 70%
HSV	341°, 12%, 75%
XYZ	42.9757, 42.0476, 46.4084
YIQ	175.3760, 10.8650, 6.8410

# Conversions

## Conversions Part 2

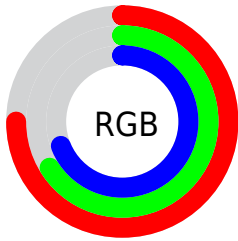
Format	Color
<a href="#">RYB</a>	<a href="#">190, 168, 175</a>
Decimal	<a href="#">12495023</a>
CIELab	<a href="#">70.90, 9.18, -0.68</a>
CIELCh	<a href="#">71, 9.205, 355.766</a>
Yxy	<a href="#">42.0476, 0.3270, 0.3199</a>
Android (android.graphics.Color)	<a href="#">4290685103 (0xFFBEA8AF)</a>
YUV	<a href="#">175.3760, -0.1854, 12.8252</a>
Hunter-Lab	<a href="#">64.8441, 4.8245, 2.9575</a>

# Details

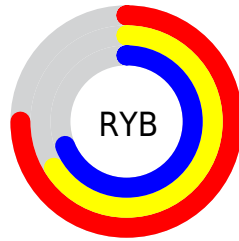
The Decimal color **12495023** is a light color, and the websafe version is hex **999999**. A complement of this color would be **11058871**, and the grayscale version is **11513775**.

A 20% lighter version of the original color is **16179174**, and **9008251** is the 20% darker color. If you saturate the color by 10%, you get **12490146**, and if you desaturate by 10%, it is **12499900**.

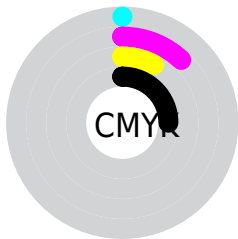
# Distribution



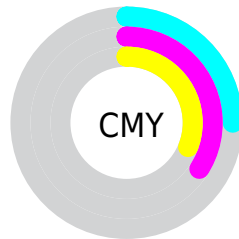
- Red (75%)
- Green (66%)
- Blue (69%)



- Red (75%)
- Yellow (66%)
- Blue (69%)



- Cyan (0%)
- Magenta (12%)
- Yellow (8%)
- Black (25%)



- Cyan (25%)
- Magenta (34%)
- Yellow (31%)

# Brightness & Saturation Gradients

These gradients show how the Decimal color 12495023 changes by changing the brightness by 10 percent. The first figure shows a shift by +10% for each color and the second figure -10%.

Similar to the brightness gradients but the following saturation gradients show a change of the Decimal color 12495023 by changing the saturation by 10% instead.




 12495023

 12495023

16777215

 10718868

 16179174

 9008251

 16776447

 7297890

 5719114

 4140595

 2693406

 1441797

 0

 12495023

 12495023

 12490146

 12499900

 12485269

 12504777

 12480392

 12509654

 12475515

 12514531

 12470638

 12517360

 12465761

 12517373

 12460884

 12517375

 12456007

 12451900

# Harmonies

## Analogous

The Analogous color harmony consists of three colors that are next to each other on the color wheel.



12102071



12495023



12626087

# Triad

The Triadic color harmony groups three colors that are evenly spaced from another and form a triangle on the color wheel.



12495023



11382686



10269115

# Complementary

The Complementary color scheme is a pair of colors which are on the opposite of each other on the color wheel.



12495023



11058871

# Split Complementary

Split-complementary colors differ from the complementary color scheme. The scheme consists of three colors, the original color and two neighbors of the complement color.



10072756



12495023



10727844

# Square

The Square scheme is like the rectangle color scheme, but the four colors are evenly spaced on the color wheel.



12495023



11971741



10269612



10792894

# Rectangle

The Rectangle color scheme consists of four colors that form a rectangle on the color wheel.



12495023



12495266



10269612



10138297

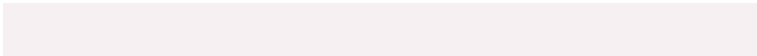


# Sweetspot

The Sweet Spot groups the original color and five complimentary colors.



12495023



16249074



12036286



8222842



16579836



8224125



# Same Dimension

The Same Dimension uses a secret algorithm to generate beautiful new colors.



12495023



16242144



12496040



6182232



10354738



2031626



# Inverse Universe

The Inverse Universe completely reimagines the original color for something new.



12495023



16242144



11057854



6182232



10354738

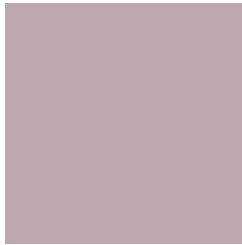


2031626



# Previews

## White Background



This preview shows how the Decimal color 12495023 looks on a white background.

## Color Contrast Check

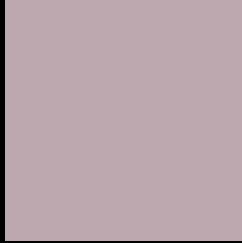
Large Text (above 18pt) WCAG AA × Fail

Any Text WCAG AA × Fail

Large Text (above 18pt) WCAG AAA × Fail

Any Text WCAG AAA × Fail

# Black Background



This preview shows how the Decimal color 12495023 looks on a black background.

## Color Contrast Check

Large Text (above 18pt) WCAG AA ✓ Pass

Any Text WCAG AA ✓ Pass

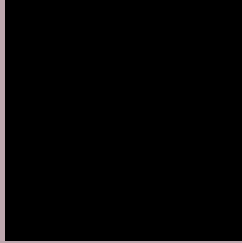
Large Text (above 18pt) WCAG AAA ✓ Pass

Any Text WCAG AAA ✓ Pass

If you want to check with other color combinations, try the [Color Contrast Checker](#).



## Decimal 12495023 Background



This preview shows how black text looks on a background with the Decimal color 12495023.



This preview shows how white text looks on a background with the Decimal color 12495023.

# Color Blindness Simulation

Color vision deficiency is a very complex topic, and I could not describe the different causes any better than Wikipedia does, so if you want to learn more, you should check out their [article about color blindness](#).


## Dichromacy



**Original Color**  
12495023

**Protanopia**  
11513266

**Deuteranopia**  
12495023



**Tritanopia**  
12560308

# Trichromacy



**Original Color**  
12495023

**Protanomaly**  
11840433

**Deuteranomaly**  
12495023

**Tritanomaly**  
12560306

# Monochromacy



**Original Color**  
12495023

**Achromatopsia**  
11513775

**Achromatomaly**  
11840687

# CSS Examples

## Text

The CSS property to change the color of the text to Decimal 12495023 is called "color". The color property can be set on classes, ids or directly on the HTML element.

This example shows how text in the color #BEA8AF looks like.

```
.text, #text, p{  
  color:#BEA8AF  
}
```

If you want to add a text shadow in that color use the text-shadow property, you can generate a text shadow directly with our [CSS Text Shadow Generator](#).

Here you see how black text with a 4 pixel #BEA8AF colored shadow looks like.

```
.shadow{ text-shadow: 4px 4px 2px #BEA8AF
}
```

## Border

The CSS property to change the border of an element to Decimal 12495023 is called "border". The border property can be set on classes, ids or directly on the HTML element.

This example shows the color as border, it can be applied via the CSS property "border" or "border-color".

```
.border, #border, table{ border:4px solid
#BEA8AF }
```

If only the border color should be changed use the property `border-color`.

```
.border{ border-color:#BEA8AF }
```

If you want to add a box shadow in that color use:

Here you see how a box with a 4 pixel #BEA8AF colored shadow looks like.

```
.boxshadow{ -moz-box-shadow:4px 4px 4px  
4px #BEA8AF; -webkit-box-shadow:4px 4px  
4px 4px #BEA8AF; box-shadow:4px 4px 4px  
4px #BEA8AF }
```

# Background

The CSS property to change the background color of an element to Decimal 12495023 is called "background". The background property can be set on classes, ids or directly on the HTML element.

```
.background, #background, body{  
background:#BEA8AF }
```

If only the background color should be changed can be used:

```
.background{ background-color:#BEA8AF }
```

This example shows the color as background, it is applied via the CSS property "background".

To optimize and compress your CSS code, you can use our [online CSS compressor and optimizer](#) based on csstidy. If you want to create a linear or radial gradient as background or border, check our [CSS Gradient Generator](#).



Hey! You found this booklet interesting? Support Converting Colors with the new Membership Option!

The pro membership hides all ads, plus gives you double the colors in the color bucket, and more awesome pro features!

**[Learn more, Memberships starting at \\$2.50/m!](#)**

**Follow me  
on Twitter!**

@ConvertingColor