

Converting Colors

Decimal(12495795)

Have a look what the booklet for
Decimal(12495795) contains.

Decimal(12495795)	3
<i>Conversions</i>	4
<i>Details</i>	6
<i>Harmonies</i>	11
<i>Previews</i>	23
<i>Color Blindness Simulation</i>	26
<i>CSS Examples</i>	29

Color

Decimal(12495795)

Conversions

Conversions Part 1

Format	Color
Hex	BEABB3
RGB	190, 171, 179
RGB Percent	75%, 67%, 70%
CMY	0.2549, 0.3294, 0.2980
CMYK	0.00, 0.10, 0.06, 0.25
HSL	335°, 13%, 71%
HSV	335°, 10%, 75%
XYZ	43.9348, 43.3276, 48.6953
YIQ	177.5930, 8.7560, 6.5160

Conversions

Conversions Part 2

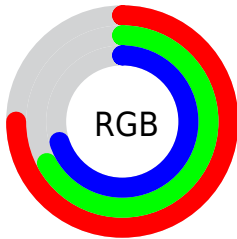
Format	Color
RYB	190, 171, 179
Decimal	12495795
CIELab	71.78, 8.25, -1.61
CIELCh	72, 8.405, 348.978
Yxy	43.3276, 0.3232, 0.3187
Android (android.graphics.Color)	4290685875 (0xFFBEABB3)
YUV	177.5930, 0.6937, 10.8809
Hunter-Lab	65.8237, 3.9503, 2.2149

Details

The Decimal color **12495795** is a light color, and the websafe version is hex **999999**. A complement of this color would be **11255478**, and the grayscale version is **11711154**.

A 20% lighter version of the original color is **16179947**, and **9009022** is the 20% darker color. If you saturate the color by 10%, you get **12490920**, and if you desaturate by 10%, it is **12500670**.

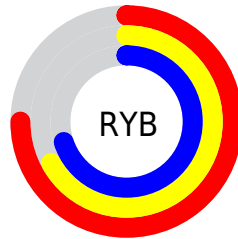
Distribution



Red (75%)

Green (67%)

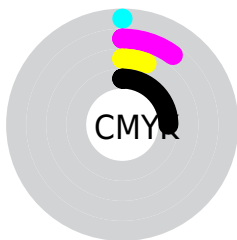
Blue (70%)



Red (75%)

Yellow (67%)

Blue (70%)

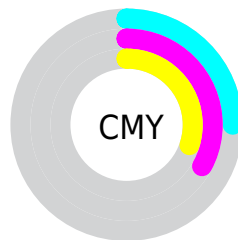


Cyan (0%)

Magenta (10%)

Yellow (6%)

Black (25%)



Cyan (25%)

Magenta (33%)

Yellow (30%)

Brightness & Saturation Gradients

These gradients show how the Decimal color 12495795 changes by changing the brightness by 10 percent. The first figure shows a shift by +10% for each color and the second figure -10%.

Similar to the brightness gradients but the following saturation gradients show a change of the Decimal color 12495795 by changing the saturation by 10% instead.

■ 12495795

■ 12495795

16777215

■ 10719384

■ 16179947

■ 9009022

■ 7298661

■ 5719629

■ 4141111

■ 2693921

■ 1441803

■ 0

■ 12495795

■ 12495795

 12490920

 12500670

 12486045

 12505545

 12481170

 12510420

 12476295

 12515295

 12471420

 12517354

 12466545

 12517365

 12461670

 12517375

 12456795

 12451920

Harmonies

Analogous

The Analogous color harmony consists of three colors that are next to each other on the color wheel.



12037306



12495795



12692395

Triad

The Triadic color harmony groups three colors that are evenly spaced from another and form a triangle on the color wheel.



12495795



11645345



10466235

Complementary

The Complementary color scheme is a pair of colors which are on the opposite of each other on the color wheel.



12495795



11255478

Split Complementary

Split-complementary colors differ from the complementary color scheme. The scheme consists of three colors, the original color and two neighbors of the complement color.



10335413



12495795



11056038

Square

The Square scheme is like the rectangle color scheme, but the four colors are evenly spaced on the color wheel.



12495795



12168865



10597549



10858943

Rectangle

The Rectangle color scheme consists of four colors that form a rectangle on the color wheel.



12495795



12627111



10597549



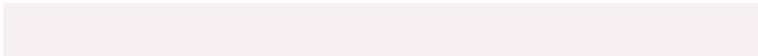
10400953

Sweetspot

The Sweet Spot groups the original color and five complimentary colors.



12495795



16249075



11971518



8222842



16579836



8224125

Same Dimension

The Same Dimension uses a secret algorithm to generate beautiful new colors.



12495795



16243430



12496043



6182233



10354755



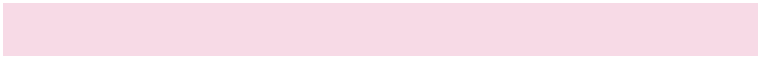
2031629

Inverse Universe

The Inverse Universe completely reimagines the original color for something new.



12495795



16243430



11255230



6182233



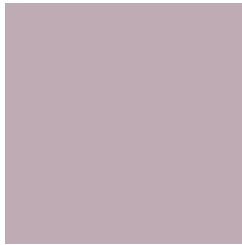
10354755



2031629

Previews

White Background



This preview shows how the Decimal color 12495795 looks on a white background.

Color Contrast Check

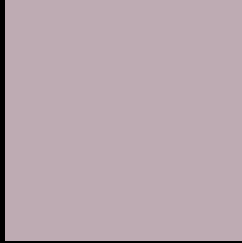
Large Text (above 18pt) WCAG AA × Fail

Any Text WCAG AA × Fail

Large Text (above 18pt) WCAG AAA × Fail

Any Text WCAG AAA × Fail

Black Background



This preview shows how the Decimal color 12495795 looks on a black background.

Color Contrast Check

Large Text (above 18pt) WCAG AA ✓ Pass

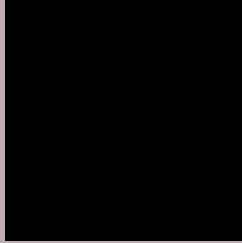
Any Text WCAG AA ✓ Pass

Large Text (above 18pt) WCAG AAA ✓ Pass

Any Text WCAG AAA ✓ Pass

If you want to check with other color combinations, try the [Color Contrast Checker](#).

Decimal 12495795 Background



This preview shows how black text looks on a background with the Decimal color 12495795.




This preview shows how white text looks on a background with the Decimal color 12495795.

Color Blindness Simulation

Color vision deficiency is a very complex topic, and I could not describe the different causes any better than Wikipedia does, so if you want to learn more, you should check out their [article about color blindness](#).

Dichromacy





Tritanopia
12561080

Trichromacy



Original Color
12495795

Protanomaly
11972276

Deuteranomaly
12561075

Tritanomaly
12561078

Monochromacy



Original Color
12495795

Achromatopsia
11711154

Achromatomaly
11972530

CSS Examples

Text

The CSS property to change the color of the text to Decimal 12495795 is called "color". The color property can be set on classes, ids or directly on the HTML element.

This example shows how text in the color #BEABB3 looks like.

```
.text, #text, p{  
    color:#BEABB3  
}
```

If you want to add a text shadow in that color use the text-shadow property, you can generate a text shadow directly with our [CSS Text Shadow Generator](#).

Here you see how black text with a 4 pixel #BEABB3 colored shadow looks like.

```
.shadow{ text-shadow: 4px 4px 2px #BEABB3  
}
```

Border

The CSS property to change the border of an element to Decimal 12495795 is called "border". The border property can be set on classes, ids or directly on the HTML element.

This example shows the color as border, it can be applied via the CSS property "border" or "border-color".

```
.border, #border, table{ border:4px solid  
#BEABB3 }
```

If only the border color should be changed use the property `border-color`.

```
.border{ border-color:#BEABB3 }
```

If you want to add a box shadow in that color use:

Here you see how a box with a 4 pixel #BEABB3 colored shadow looks like.

```
.boxshadow{ -moz-box-shadow:4px 4px 4px  
4px #BEABB3; -webkit-box-shadow:4px 4px  
4px 4px #BEABB3; box-shadow:4px 4px 4px  
4px #BEABB3 }
```

Background

The CSS property to change the background color of an element to Decimal 12495795 is called "background". The background property can be set on classes, ids or directly on the HTML element.

```
.background, #background, body{  
background:#BEABB3 }
```

If only the background color should be changed can be used:

```
.background{ background-color:#BEABB3 }
```

This example shows the color as background, it is applied via the CSS property "background".

To optimize and compress your CSS code, you can use our [online CSS compressor and optimizer](#) based on csstidy. If you want to create a linear or radial gradient as background or border, check our [CSS Gradient Generator](#).

Hey! You found this booklet interesting? Support Converting Colors with the new Membership Option!

The pro membership hides all ads, plus gives you double the colors in the color bucket, and more awesome pro features!

[Learn more, Memberships starting at \\$2.50/m!](#)

**Follow me
on Twitter!**

@ConvertingColor