

Converting Colors

Decimal(12540553)

Have a look what the booklet for
Decimal(12540553) contains.

Decimal(12540553)	3
<i>Conversions</i>	4
<i>Details</i>	6
<i>Harmonies</i>	11
<i>Previews</i>	23
<i>Color Blindness Simulation</i>	26
<i>CSS Examples</i>	29

Color

Decimal(12540553)

Conversions

Conversions Part 1

Format	Color
Hex	BF5A89
RGB	191, 90, 137
RGB Percent	75%, 35%, 54%
CMY	0.2510, 0.6471, 0.4627
CMYK	0.00, 0.53, 0.28, 0.25
HSL	332°, 44%, 55%
HSV	332°, 53%, 75%
XYZ	29.6574, 20.1948, 26.0018
YIQ	125.5570, 45.1090, 36.0290

Conversions

Conversions Part 2

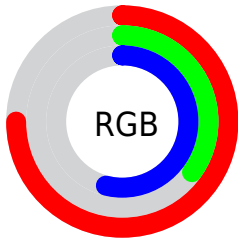
Format	Color
R_{YB}	191, 90, 137
Decimal	12540553
CIE _{Lab}	52.06, 45.78, -6.74
CIE _{LCh}	52, 46.277, 351.621
Yxy	20.1948, 0.3910, 0.2662
Android (android.graphics.Color)	4290730633 (0xFFBF5A89)
YUV	125.5570, 5.6414, 57.3935
Hunter-Lab	44.9387, 39.1588, -2.8485

Details

The Decimal color **12540553** is a dark color, and the websafe version is hex **CC6699**. A complement of this color would be **5947280**, and the grayscale version is **8224125**.

A 20% lighter version of the original color is **16420798**, and **8856919** is the 20% darker color. If you saturate the color by 10%, you get **12535679**, and if you desaturate by 10%, it is **12545427**.

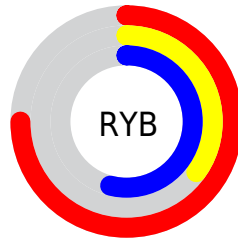
Distribution



Red (75%)

Green (35%)

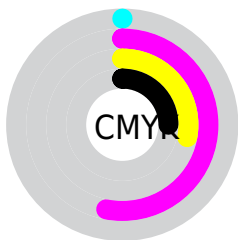
Blue (54%)



Red (75%)

Yellow (35%)

Blue (54%)

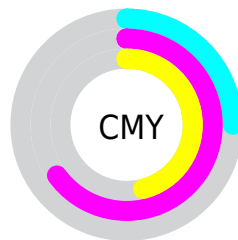


Cyan (0%)

Magenta (53%)

Yellow (28%)

Black (25%)



Cyan (25%)

Magenta (65%)

Yellow (46%)

Brightness & Saturation Gradients

These gradients show how the Decimal color 12540553 changes by changing the brightness by 10 percent. The first figure shows a shift by +10% for each color and the second figure -10%.

Similar to the brightness gradients but the following saturation gradients show a change of the Decimal color 12540553 by changing the saturation by 10% instead.

 12540553

 12540553

16777215

 10633328

 16420798

 8856919


 16755674

 7012672

 16762871

 5242922

 16770303

 3670038

 1572865

 0

 12540553

 12540553

 12535679

 12545427

 12530805

 12550301

 12525930

 12555176

 12521056

 12560050

 12517465

 12565180

 12570054

 12574928

 12579803

 12582885

Harmonies

Analogous

The Analogous color harmony consists of three colors that are next to each other on the color wheel.



10643118



12540553



12933985

Triad

The Triadic color harmony groups three colors that are evenly spaced from another and form a triangle on the color wheel.



12540553



7766830



36026

Complementary

The Complementary color scheme is a pair of colors which are on the opposite of each other on the color wheel.



12540553



5947280

Split Complementary

Split-complementary colors differ from the complementary color scheme. The scheme consists of three colors, the original color and two neighbors of the complement color.



37016



12540553



4623177

Square

The Square scheme is like the rectangle color scheme, but the four colors are evenly spaced on the color wheel.



12540553



10253866



36719



33994

Rectangle

The Rectangle color scheme consists of four colors that form a rectangle on the color wheel.



12540553



12477001



36719



36528

Sweetspot

The Sweet Spot groups the original color and five complimentary colors.



12540553



16240866



9460415



8217968



16579836



8224125

Same Dimension

The Same Dimension uses a secret algorithm to generate beautiful new colors.



12540553



16211108



12541274



6182233



10354762



2031630

Inverse Universe

The Inverse Universe completely reimagines the original color for something new.



12540553



16211108



5946559



6182233



10354762



2031630

Previews

White Background



This preview shows how the Decimal color 12540553 looks on a white background.

Color Contrast Check

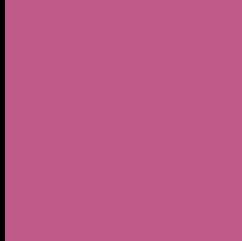
Large Text (above 18pt) WCAG AA ✓ Pass

Any Text WCAG AA × Fail

Large Text (above 18pt) WCAG AAA × Fail

Any Text WCAG AAA × Fail

Black Background



This preview shows how the Decimal color 12540553 looks on a black background.

Color Contrast Check

Large Text (above 18pt) WCAG AA ✓ Pass

Any Text WCAG AA ✓ Pass

Large Text (above 18pt) WCAG AAA ✓ Pass

Any Text WCAG AAA × Fail

If you want to check with other color combinations, try the [Color Contrast Checker](#).

Decimal 12540553 Background



This preview shows how black text looks on a background with the Decimal color 12540553.



This preview shows how white text looks on a background with the Decimal color 12540553.

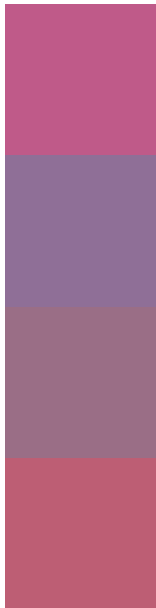
Color Blindness Simulation

Color vision deficiency is a very complex topic, and I could not describe the different causes any better than Wikipedia does, so if you want to learn more, you should check out their [article about color blindness](#).

Dichromacy



Trichromacy



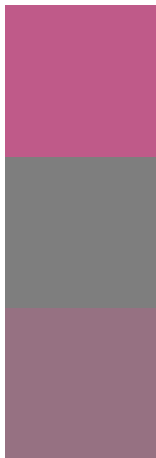
Original Color
12540553

Protanomaly
9400215

Deuteranomaly
10120838

Tritanomaly
12410484

Monochromacy



Original Color
12540553

Achromatopsia
8289918

Achromatomaly
9859458

CSS Examples

Text

The CSS property to change the color of the text to Decimal 12540553 is called "color". The color property can be set on classes, ids or directly on the HTML element.

This example shows how text in the color #BF5A89 looks like.

```
.text, #text, p{  
  color:#BF5A89  
}
```

If you want to add a text shadow in that color use the text-shadow property, you can generate a text shadow directly with our [CSS Text Shadow Generator](#).

Here you see how black text with a 4 pixel #BF5A89 colored shadow looks like.

```
.shadow{ text-shadow: 4px 4px 2px #BF5A89
}
```

Border

The CSS property to change the border of an element to Decimal 12540553 is called "border". The border property can be set on classes, ids or directly on the HTML element.

This example shows the color as border, it can be applied via the CSS property "border" or "border-color".

```
.border, #border, table{ border:4px solid
#BF5A89 }
```

If only the border color should be changed use the property `border-color`.

```
.border{ border-color:#BF5A89 }
```

If you want to add a box shadow in that color use:

Here you see how a box with a 4 pixel #BF5A89 colored shadow looks like.

```
.boxshadow{ -moz-box-shadow:4px 4px 4px  
4px #BF5A89; -webkit-box-shadow:4px 4px  
4px 4px #BF5A89; box-shadow:4px 4px 4px  
4px #BF5A89 }
```

Background

The CSS property to change the background color of an element to Decimal 12540553 is called "background". The background property can be set on classes, ids or directly on the HTML element.

```
.background, #background, body{  
background:#BF5A89 }
```

If only the background color should be changed can be used:

```
.background{ background-color:#BF5A89 }
```

This example shows the color as background, it is applied via the CSS property "background".

To optimize and compress your CSS code, you can use our [online CSS compressor and optimizer](#) based on csstidy. If you want to create a linear or radial gradient as background or border, check our [CSS Gradient Generator](#).

Hey! You found this booklet interesting? Support Converting Colors with the new Membership Option!

The pro membership hides all ads, plus gives you double the colors in the color bucket, and more awesome pro features!

[Learn more, Memberships starting at \\$2.50/m!](#)

**Follow me
on Twitter!**

@ConvertingColor