

Converting Colors

Decimal(12548215)

Have a look what the booklet for
Decimal(12548215) contains.

Decimal(12548215)	3
<i>Conversions</i>	4
<i>Details</i>	6
<i>Harmonies</i>	11
<i>Previews</i>	23
<i>Color Blindness Simulation</i>	26
<i>CSS Examples</i>	29

Color

Decimal(12548215)

Conversions

Conversions Part 1

Format	Color
Hex	BF7877
RGB	191, 120, 119
RGB Percent	75%, 47%, 47%
CMY	0.2510, 0.5294, 0.5333
CMYK	0.00, 0.37, 0.38, 0.25
HSL	1°, 36%, 61%
HSV	1°, 38%, 75%
XYZ	31.5321, 25.8412, 20.7787
YIQ	141.1150, 42.6370, 14.7410

Conversions

Conversions Part 2

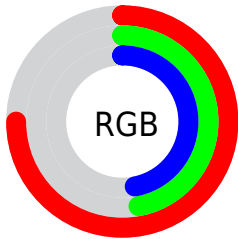
Format	Color
RYB	191, 120, 119
Decimal	12548215
CIELab	57.89, 27.66, 12.24
CIElCh	58, 30.246, 23.878
Yxy	25.8412, 0.4035, 0.3307
Android (android.graphics.Color)	4290738295 (0xFFBF7877)
YUV	141.1150, -10.9027, 43.7491
Hunter-Lab	50.8343, 21.7622, 11.3490

Details

The Decimal color **12548215** is a dark color, and the websafe version is hex **996666**. A complement of this color would be **7847615**, and the grayscale version is **9276813**.

A 20% lighter version of the original color is **16362923**, and **8865351** is the 20% darker color. If you saturate the color by 10%, you get **12543332**, and if you desaturate by 10%, it is **12553098**.

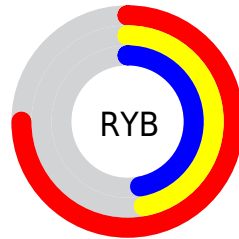
Distribution



Red (75%)

Green (47%)

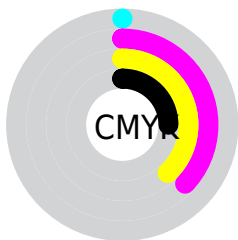
Blue (47%)



Red (75%)

Yellow (47%)

Blue (47%)

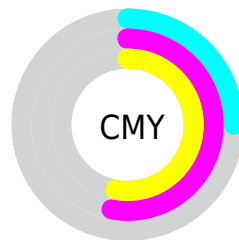


Cyan (0%)

Magenta (37%)

Yellow (38%)

Black (25%)



Cyan (25%)

Magenta (53%)

Yellow (53%)

Brightness & Saturation Gradients

These gradients show how the Decimal color 12548215 changes by changing the brightness by 10 percent. The first figure shows a shift by +10% for each color and the second figure -10%.

Similar to the brightness gradients but the following saturation gradients show a change of the Decimal color 12548215 by changing the saturation by 10% instead.


 12548215

 12548215

16777215

 10706782

 16362923

 8865351

 16763334

 7089968

 16770530

 5379868

 3735553

 2097153

 0

 12548215

 12548215

 12543332

 12553098

 12538449

 12557981

 12533566

 12562864

 12528939

 12567491

 12524055

 12572375

 12519172

 12577258

 12518144

 12582141

 12582911

Harmonies

Analogous

The Analogous color harmony consists of three colors that are next to each other on the color wheel.



12285842



12548215



11960161

Triad

The Triadic color harmony groups three colors that are evenly spaced from another and form a triangle on the color wheel.



12548215



6919787



6131647

Complementary

The Complementary color scheme is a pair of colors which are on the opposite of each other on the color wheel.



12548215



7847615

Split Complementary

Split-complementary colors differ from the complementary color scheme. The scheme consists of three colors, the original color and two neighbors of the complement color.



3446453



12548215



4757893

Square

The Square scheme is like the rectangle color scheme, but the four colors are evenly spaced on the color wheel.



12548215



8884314



2857376



8881851

Rectangle

The Rectangle color scheme consists of four colors that form a rectangle on the color wheel.



12548215



11109721



2857376



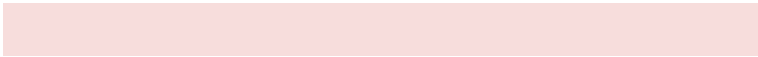
5214909

Sweetspot

The Sweet Spot groups the original color and five complimentary colors.



12548215



16244188



12548031



8220013



16579836



8224125

Same Dimension

The Same Dimension uses a secret algorithm to generate beautiful new colors.



12548215



16222856



12557175



6182229



10355200



2031616

Inverse Universe

The Inverse Universe completely reimagines the original color for something new.



7847615



8976119



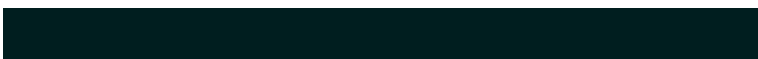
7838655



5594718



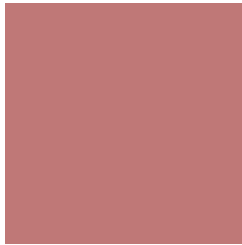
40094



7711

Previews

White Background



This preview shows how the Decimal color 12548215 looks on a white background.

Color Contrast Check

Large Text (above 18pt) WCAG AA ✓ Pass

Any Text WCAG AA × Fail

Large Text (above 18pt) WCAG AAA × Fail

Any Text WCAG AAA × Fail

Black Background



This preview shows how the Decimal color 12548215 looks on a black background.

Color Contrast Check

Large Text (above 18pt) WCAG AA ✓ Pass

Any Text WCAG AA ✓ Pass

Large Text (above 18pt) WCAG AAA ✓ Pass

Any Text WCAG AAA × Fail

If you want to check with other color combinations, try the [Color Contrast Checker](#).

Decimal 12548215 Background



This preview shows how black text looks on a background with the Decimal color 12548215.



This preview shows how white text looks on a background with the Decimal color 12548215.

Color Blindness Simulation

Color vision deficiency is a very complex topic, and I could not describe the different causes any better than Wikipedia does, so if you want to learn more, you should check out their [article about color blindness](#).


Dichromacy



Original Color
12548215

Protanopia
9538433

Deuteranopia
10585716



Tritanopia
12613504

Trichromacy



Original Color
12548215

Protanomaly
10650749

Deuteranomaly
11305333

Tritanomaly
12613501

Monochromacy



Original Color
12548215

Achromatopsia
9276813

Achromatomaly
10454405

CSS Examples

Text

The CSS property to change the color of the text to Decimal 12548215 is called "color". The color property can be set on classes, ids or directly on the HTML element.

This example shows how text in the color `#BF7877` looks like.

```
.text, #text, p{  
  color:#BF7877  
}
```

If you want to add a text shadow in that color use the text-shadow property, you can generate a text shadow directly with our [CSS Text Shadow Generator](#).

Here you see how black text with a 4 pixel #BF7877 colored shadow looks like.

```
.shadow{ text-shadow: 4px 4px 2px #BF7877  
}
```

Border

The CSS property to change the border of an element to Decimal 12548215 is called "border". The border property can be set on classes, ids or directly on the HTML element.

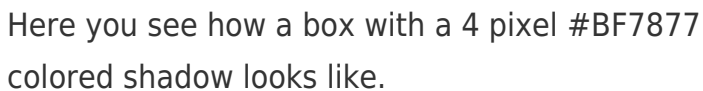
This example shows the color as border, it can be applied via the CSS property "border" or "border-color".

```
.border, #border, table{ border:4px solid  
#BF7877 }
```

If only the border color should be changed use the property `border-color`.

```
.border{ border-color:#BF7877 }
```

If you want to add a box shadow in that color use:



Here you see how a box with a 4 pixel #BF7877 colored shadow looks like.

```
.boxshadow{ -moz-box-shadow:4px 4px 4px  
4px #BF7877; -webkit-box-shadow:4px 4px  
4px 4px #BF7877; box-shadow:4px 4px 4px  
4px #BF7877 }
```

Background

The CSS property to change the background color of an element to Decimal 12548215 is called "background". The background property can be set on classes, ids or directly on the HTML element.

```
.background, #background, body{  
background:#BF7877 }
```

If only the background color should be changed can be used:

```
.background{ background-color:#BF7877 }
```

This example shows the color as background, it is applied via the CSS property "background".

To optimize and compress your CSS code, you can use our [online CSS compressor and optimizer](#) based on csstidy. If you want to create a linear or radial gradient as background or border, check our [CSS Gradient Generator](#).

Hey! You found this booklet interesting? Support Converting Colors with the new Membership Option!

The pro membership hides all ads, plus gives you double the colors in the color bucket, and more awesome pro features!

[Learn more, Memberships starting at \\$2.50/m!](#)

**Follow me
on Twitter!**

@ConvertingColor