

Converting Colors

Decimal(12550784)

Have a look what the booklet for
Decimal(12550784) contains.

Decimal(12550784)	3
<i>Conversions</i>	4
<i>Details</i>	6
<i>Harmonies</i>	11
<i>Previews</i>	23
<i>Color Blindness Simulation</i>	26
<i>CSS Examples</i>	29

Color

Decimal(12550784)

Conversions

Conversions Part 1

Format	Color
Hex	BF8280
RGB	191, 130, 128
RGB Percent	75%, 51%, 50%
CMY	0.2510, 0.4902, 0.4980
CMYK	0.00, 0.32, 0.33, 0.25
HSL	2°, 33%, 63%
HSV	2°, 33%, 75%
XYZ	33.3648, 28.6001, 24.1839
YIQ	148.0110, 36.9980, 12.3100

Conversions

Conversions Part 2

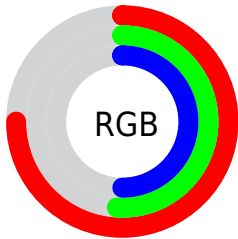
Format	Color
RYB	191, 130, 128
Decimal	12550784
CIELab	60.43, 23.28, 10.65
CIElCh	60, 25.605, 24.579
Yxy	28.6001, 0.3873, 0.3320
Android (android.graphics.Color)	4290740864 (0xFFBF8280)
YUV	148.0110, -9.8654, 37.7014
Hunter-Lab	53.4791, 17.7749, 10.6237

Details

The Decimal color **12550784** is a light color, and the websafe version is hex **CC9999**. A complement of this color would be **8437183**, and the grayscale version is **9737364**.

A 20% lighter version of the original color is **16365493**, and **8933455** is the 20% darker color. If you saturate the color by 10%, you get **12546157**, and if you desaturate by 10%, it is **12555411**.

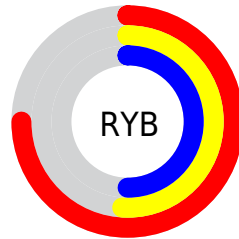
Distribution



Red (75%)

Green (51%)

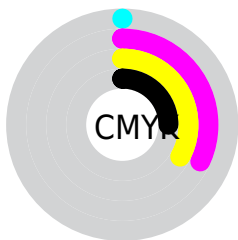
Blue (50%)



Red (75%)

Yellow (51%)

Blue (50%)

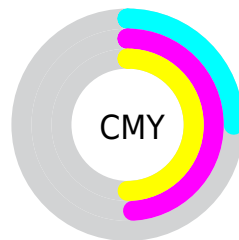


Cyan (0%)

Magenta (32%)

Yellow (33%)

Black (25%)



Cyan (25%)

Magenta (49%)

Yellow (50%)

Brightness & Saturation Gradients

These gradients show how the Decimal color 12550784 changes by changing the brightness by 10 percent. The first figure shows a shift by +10% for each color and the second figure -10%.

Similar to the brightness gradients but the following saturation gradients show a change of the Decimal color 12550784 by changing the saturation by 10% instead.

 12550784

 12550784

16777215

 10709351

 16365493


 8933455

 16765904

 7157816

 16773357

 5448227

 3803917

 2490369

 0

 12550784

 12550784

 12546157

 12555411

 12541274

 12560294

 12536647

 12564921

 12531764

 12569804

 12527137

 12574432

 12522253

 12579315

 12518912

 12582911

Harmonies

Analogous

The Analogous color harmony consists of three colors that are next to each other on the color wheel.



12288407



12550784



12027758

Triad

The Triadic color harmony groups three colors that are evenly spaced from another and form a triangle on the color wheel.



12550784



7641975



7312830

Complementary

The Complementary color scheme is a pair of colors which are on the opposite of each other on the color wheel.



12550784



8437183

Split Complementary

Split-complementary colors differ from the complementary color scheme. The scheme consists of three colors, the original color and two neighbors of the complement color.



5479350



12550784



6004365

Square

The Square scheme is like the rectangle color scheme, but the four colors are evenly spaced on the color wheel.



12550784



9344616



5021348



9407931

Rectangle

The Rectangle color scheme consists of four colors that form a rectangle on the color wheel.



12550784



11308135



5021348



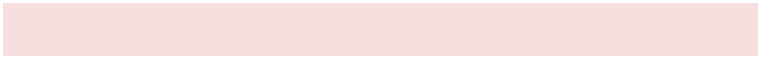
6592445

Sweetspot

The Sweet Spot groups the original color and five complimentary colors.



12550784



16244703



12550334



8220270



16579836



8224125

Same Dimension

The Same Dimension uses a secret algorithm to generate beautiful new colors.



12550784



16226452



12558720



6182229



10355968



2031872

Inverse Universe

The Inverse Universe completely reimagines the original color for something new.



8437183



9762039



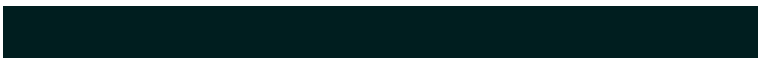
8429247



5594718



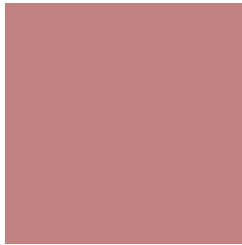
39326



7711

Previews

White Background



This preview shows how the Decimal color 12550784 looks on a white background.

Color Contrast Check

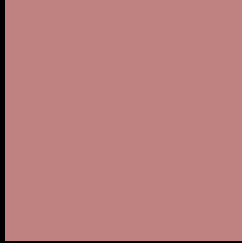
Large Text (above 18pt) WCAG AA ✓ Pass

Any Text WCAG AA ✗ Fail

Large Text (above 18pt) WCAG AAA ✗ Fail

Any Text WCAG AAA ✗ Fail

Black Background



This preview shows how the Decimal color 12550784 looks on a black background.

Color Contrast Check

Large Text (above 18pt) WCAG AA ✓ Pass

Any Text WCAG AA ✓ Pass

Large Text (above 18pt) WCAG AAA ✓ Pass

Any Text WCAG AAA × Fail

If you want to check with other color combinations, try the [Color Contrast Checker](#).

Decimal 12550784 Background



This preview shows how black text looks on a background with the Decimal color 12550784.

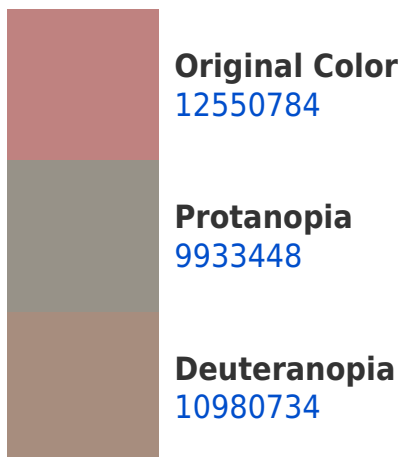



This preview shows how white text looks on a background with the Decimal color 12550784.

Color Blindness Simulation

Color vision deficiency is a very complex topic, and I could not describe the different causes any better than Wikipedia does, so if you want to learn more, you should check out their [article about color blindness](#).

Dichromacy





Tritanopia
12615818

Trichromacy



Original Color
12550784

Protanomaly
10914949

Deuteranomaly
11569535

Tritanomaly
12616070

Monochromacy



Original Color
12550784

Achromatopsia
9737364

Achromatomaly
10784141

CSS Examples

Text

The CSS property to change the color of the text to Decimal 12550784 is called "color". The color property can be set on classes, ids or directly on the HTML element.

This example shows how text in the color #BF8280 looks like.

```
.text, #text, p{  
  color:#BF8280  
}
```

If you want to add a text shadow in that color use the text-shadow property, you can generate a text shadow directly with our [CSS Text Shadow Generator](#).

Here you see how black text with a 4 pixel #BF8280 colored shadow looks like.

```
.shadow{ text-shadow: 4px 4px 2px #BF8280
}
```

Border

The CSS property to change the border of an element to Decimal 12550784 is called "border". The border property can be set on classes, ids or directly on the HTML element.

This example shows the color as border, it can be applied via the CSS property "border" or "border-color".

```
.border, #border, table{ border:4px solid
#BF8280 }
```

If only the border color should be changed use the property `border-color`.

```
.border{ border-color:#BF8280 }
```

If you want to add a box shadow in that color use:

Here you see how a box with a 4 pixel #BF8280 colored shadow looks like.

```
.boxshadow{ -moz-box-shadow:4px 4px 4px  
4px #BF8280; -webkit-box-shadow:4px 4px  
4px 4px #BF8280; box-shadow:4px 4px 4px  
4px #BF8280 }
```

Background

The CSS property to change the background color of an element to Decimal 12550784 is called "background". The background property can be set on classes, ids or directly on the HTML element.

```
.background, #background, body{  
background:#BF8280 }
```

If only the background color should be changed can be used:

```
.background{ background-color:#BF8280 }
```

This example shows the color as background, it is applied via the CSS property "background".

To optimize and compress your CSS code, you can use our [online CSS compressor and optimizer](#) based on csstidy. If you want to create a linear or radial gradient as background or border, check our [CSS Gradient Generator](#).

Hey! You found this booklet interesting? Support Converting Colors with the new Membership Option!

The pro membership hides all ads, plus gives you double the colors in the color bucket, and more awesome pro features!

[Learn more, Memberships starting at \\$2.50/m!](#)

**Follow me
on Twitter!**

@ConvertingColor