

Converting Colors

Decimal(12551279)

Have a look what the booklet for
Decimal(12551279) contains.

Decimal(12551279)	3
<i>Conversions</i>	4
<i>Details</i>	6
<i>Harmonies</i>	11
<i>Previews</i>	23
<i>Color Blindness Simulation</i>	26
<i>CSS Examples</i>	29

Color

Decimal(12551279)

Conversions

Conversions Part 1

Format	Color
Hex	BF846F
RGB	191, 132, 111
RGB Percent	75%, 52%, 44%
CMY	0.2510, 0.4824, 0.5647
CMYK	0.00, 0.31, 0.42, 0.25
HSL	16°, 38%, 59%
HSV	16°, 42%, 75%
XYZ	32.6064, 28.7266, 18.8652
YIQ	147.2470, 41.9050, 5.9770

Conversions

Conversions Part 2

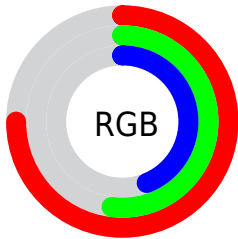
Format	Color
R_{YB}	191, 139, 111
Decimal	12551279
CIE _{Lab}	60.54, 20.11, 20.47
CIE _{LCh}	61, 28.692, 45.510
Yxy	28.7266, 0.4066, 0.3582
Android (android.graphics.Color)	4290741359 (0xFFBF846F)
YUV	147.2470, -17.8698, 38.3714
Hunter-Lab	53.5972, 14.7971, 16.6491

Details

The Decimal color **12551279** is a dark color, and the websafe version is hex **CC9999**. A complement of this color would be **7318207**, and the grayscale version is **9671571**.

A 20% lighter version of the original color is **16365987**, and **8868415** is the 20% darker color. If you saturate the color by 10%, you get **12547676**, and if you desaturate by 10%, it is **12554882**.

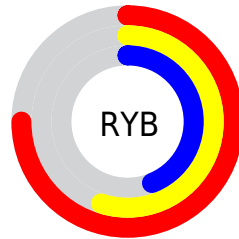
Distribution



Red (75%)

Green (52%)

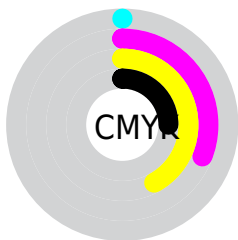
Blue (44%)



Red (75%)

Yellow (55%)

Blue (44%)

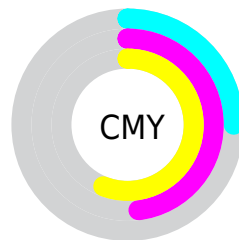


Cyan (0%)

Magenta (31%)

Yellow (42%)

Black (25%)



Cyan (25%)

Magenta (48%)

Yellow (56%)

Brightness & Saturation Gradients

These gradients show how the Decimal color 12551279 changes by changing the brightness by 10 percent. The first figure shows a shift by +10% for each color and the second figure -10%.

Similar to the brightness gradients but the following saturation gradients show a change of the Decimal color 12551279 by changing the saturation by 10% instead.

 12551279

 12551279

16777215

 10709847

 16365987

 8868415

 16766398

 7093033

 16773850

 5383188

 16777206

 3739136

 2293761

 0

 12551279

 12551279

 12547676

 12554882

 12544073

 12558485

 12540470

 12562088

 12536867

 12565691

 12533264

 12569295

 12530176

 12573154

 12576757

 12580351

 12582911

Harmonies

Analogous

The Analogous color harmony consists of three colors that are next to each other on the color wheel.



12877702



12551279



11439201

Triad

The Triadic color harmony groups three colors that are evenly spaced from another and form a triangle on the color wheel.



12551279



6070148



8687811

Complementary

The Complementary color scheme is a pair of colors which are on the opposite of each other on the color wheel.



12551279



7318207

Split Complementary

Split-complementary colors differ from the complementary color scheme. The scheme consists of three colors, the original color and two neighbors of the complement color.



6133954



12551279



4366495

Square

The Square scheme is like the rectangle color scheme, but the four colors are evenly spaced on the color wheel.



12551279



8035182



4234933



10913718

Rectangle

The Rectangle color scheme consists of four colors that form a rectangle on the color wheel.



12551279



10457695



4234933



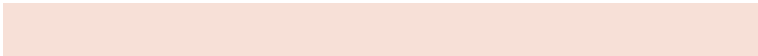
7836612

Sweetspot

The Sweet Spot groups the original color and five complimentary colors.



12551279



16244951



12545963



8220265



16579836



8224125

Same Dimension

The Same Dimension uses a secret algorithm to generate beautiful new colors.



12551279



16227452



12561263



6182741



10365440



2033664

Inverse Universe

The Inverse Universe completely reimagines the original color for something new.



7318207



8181751



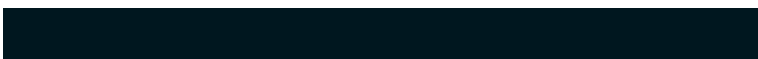
7308223



5594206



30110



5919

Previews

White Background



This preview shows how the Decimal color 12551279 looks on a white background.

Color Contrast Check

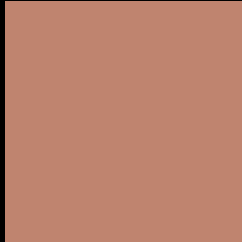
Large Text (above 18pt) WCAG AA ✓ Pass

Any Text WCAG AA × Fail

Large Text (above 18pt) WCAG AAA × Fail

Any Text WCAG AAA × Fail

Black Background



This preview shows how the Decimal color 12551279 looks on a black background.

Color Contrast Check

Large Text (above 18pt) WCAG AA ✓ Pass

Any Text WCAG AA ✓ Pass

Large Text (above 18pt) WCAG AAA ✓ Pass

Any Text WCAG AAA × Fail

If you want to check with other color combinations, try the [Color Contrast Checker](#).

Decimal 12551279 Background



This preview shows how black text looks on a background with the Decimal color 12551279.



This preview shows how white text looks on a background with the Decimal color 12551279.

Color Blindness Simulation

Color vision deficiency is a very complex topic, and I could not describe the different causes any better than Wikipedia does, so if you want to learn more, you should check out their [article about color blindness](#).


Dichromacy



Original Color
12551279

Protanopia
10195573

Deuteranopia
11373677



Tritanopia
12681354

Trichromacy



Original Color
12551279

Protanomaly
11046259

Deuteranomaly
11831662

Tritanomaly
12616064

Monochromacy



Original Color
12551279

Achromatopsia
9671571

Achromatomaly
10718854

CSS Examples

Text

The CSS property to change the color of the text to Decimal 12551279 is called "color". The color property can be set on classes, ids or directly on the HTML element.

This example shows how text in the color #BF846F looks like.

```
.text, #text, p{  
    color:#BF846F  
}
```

If you want to add a text shadow in that color use the text-shadow property, you can generate a text shadow directly with our [CSS Text Shadow Generator](#).

Here you see how black text with a 4 pixel #BF846F colored shadow looks like.

```
.shadow{ text-shadow: 4px 4px 2px #BF846F
}
```

Border

The CSS property to change the border of an element to Decimal 12551279 is called "border". The border property can be set on classes, ids or directly on the HTML element.

This example shows the color as border, it can be applied via the CSS property "border" or "border-color".

```
.border, #border, table{ border:4px solid
#BF846F }
```

If only the border color should be changed use the property `border-color`.

```
.border{ border-color:#BF846F }
```

If you want to add a box shadow in that color use:

Here you see how a box with a 4 pixel #BF846F colored shadow looks like.

```
.boxshadow{ -moz-box-shadow:4px 4px 4px  
4px #BF846F; -webkit-box-shadow:4px 4px  
4px 4px #BF846F; box-shadow:4px 4px 4px  
4px #BF846F }
```

Background

The CSS property to change the background color of an element to Decimal 12551279 is called "background". The background property can be set on classes, ids or directly on the HTML element.

```
.background, #background, body{  
background:#BF846F }
```

If only the background color should be changed can be used:

```
.background{ background-color:#BF846F }
```

This example shows the color as background, it is applied via the CSS property "background".

To optimize and compress your CSS code, you can use our [online CSS compressor and optimizer](#) based on csstidy. If you want to create a linear or radial gradient as background or border, check our [CSS Gradient Generator](#).

Hey! You found this booklet interesting? Support Converting Colors with the new Membership Option!

The pro membership hides all ads, plus gives you double the colors in the color bucket, and more awesome pro features!

[Learn more, Memberships starting at \\$2.50/m!](#)

**Follow me
on Twitter!**

@ConvertingColor