

# Converting Colors

Decimal(12551808)

Have a look what the booklet for  
Decimal(12551808) contains.

<b>Decimal(12551808)</b> .....	3
<i><b>Conversions</b></i> .....	4
<i><b>Details</b></i> .....	6
<i><b>Harmonies</b></i> .....	11
<i><b>Previews</b></i> .....	23
<i><b>Color Blindness Simulation</b></i> .....	26
<i><b>CSS Examples</b></i> .....	29

# **Color**

**Decimal(12551808)**

# Conversions

## Conversions Part 1

Format	Color
Hex	BF8680
RGB	191, 134, 128
RGB Percent	75%, 53%, 50%
CMY	0.2510, 0.4745, 0.4980
CMYK	0.00, 0.30, 0.33, 0.25
HSL	6°, 33%, 63%
HSV	6°, 33%, 75%
XYZ	33.9072, 29.6851, 24.3648
YIQ	150.3590, 35.8980, 10.2180

# Conversions

## Conversions Part 2

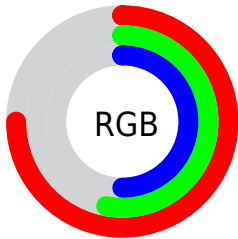
<b>Format</b>	<b>Color</b>
<b>RYB</b>	191, 135, 128
Decimal	12551808
CIELab	61.38, 21.07, 11.99
CIELCh	61, 24.246, 29.649
Yxy	29.6851, 0.3855, 0.3375
Android (android.graphics.Color)	4290741888 (0xFFBF8680)
YUV	150.3590, -11.0230, 35.6422
Hunter-Lab	54.4840, 15.7396, 11.6248

# Details

The Decimal color **12551808** is a light color, and the websafe version is hex **CC9999**. A complement of this color would be **8436159**, and the grayscale version is **9868950**.

A 20% lighter version of the original color is **16366773**, and **8934479** is the 20% darker color. If you saturate the color by 10%, you get **12547437**, and if you desaturate by 10%, it is **12556179**.

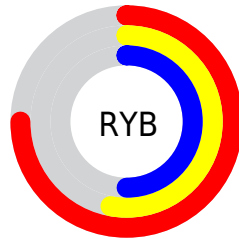
# Distribution



Red (75%)

Green (53%)

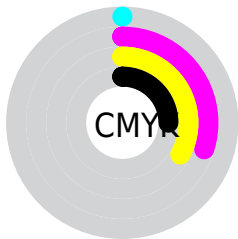
Blue (50%)



Red (75%)

Yellow (53%)

Blue (50%)

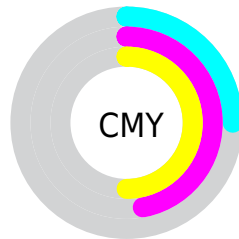


Cyan (0%)

Magenta (30%)

Yellow (33%)

Black (25%)



Cyan (25%)

Magenta (47%)

Yellow (50%)

# Brightness & Saturation Gradients

These gradients show how the Decimal color 12551808 changes by changing the brightness by 10 percent. The first figure shows a shift by +10% for each color and the second figure -10%.

Similar to the brightness gradients but the following saturation gradients show a change of the Decimal color 12551808 by changing the saturation by 10% instead.



 12551808

 12551808


16777215

 10710119

 16366773

 8934479

 16766928

 7158840

 16774381

 5514787

 3870733

 2490368

 0

 12551808

 12551808

 12547437

 12556179

 12542810

 12560806

 12538439

 12565177

 12534068

 12569548

 12529697

 12573920

 12525069

 12578547

 12521984

 12582911

# Harmonies

## Analogous

The Analogous color harmony consists of three colors that are next to each other on the color wheel.



12420501



12551808



11963504

# Triad

The Triadic color harmony groups three colors that are evenly spaced from another and form a triangle on the color wheel.



12551808



7642750



7968447

# Complementary

The Complementary color scheme is a pair of colors which are on the opposite of each other on the color wheel.



12551808



8436159

# Split Complementary

Split-complementary colors differ from the complementary color scheme. The scheme consists of three colors, the original color and two neighbors of the complement color.



6200505



12551808



6201491

# Square

The Square scheme is like the rectangle color scheme, but the four colors are evenly spaced on the color wheel.



12551808



9279855



5480617



9932729

# Rectangle

The Rectangle color scheme consists of four colors that form a rectangle on the color wheel.



12551808



11243626



5480617



7313598

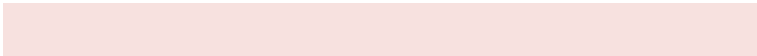


# Sweetspot

The Sweet Spot groups the original color and five complimentary colors.



12551808



16245215



12550330



8220526



16579836



8224125



# Same Dimension

The Same Dimension uses a secret algorithm to generate beautiful new colors.



12551808



16227988



12559744



6182485



10358528



2032384



# Inverse Universe

The Inverse Universe completely reimagines the original color for something new.



8436159



9760503



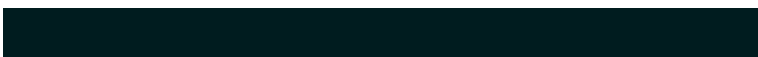
8428223



5594462



36766



7199



# Previews

## White Background



This preview shows how the Decimal color 12551808 looks on a white background.

## Color Contrast Check

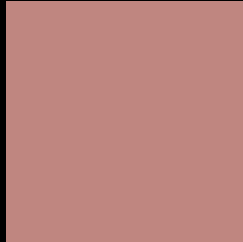
Large Text (above 18pt) WCAG AA ✓ Pass

Any Text WCAG AA × Fail

Large Text (above 18pt) WCAG AAA × Fail

Any Text WCAG AAA × Fail

# Black Background



This preview shows how the Decimal color 12551808 looks on a black background.

## Color Contrast Check

Large Text (above 18pt) WCAG AA ✓ Pass

Any Text WCAG AA ✓ Pass

Large Text (above 18pt) WCAG AAA ✓ Pass

Any Text WCAG AAA × Fail

If you want to check with other color combinations, try the [Color Contrast Checker](#).



## Decimal 12551808 Background



This preview shows how black text looks on a background with the Decimal color 12551808.



This preview shows how white text looks on a background with the Decimal color 12551808.

# Color Blindness Simulation

Color vision deficiency is a very complex topic, and I could not describe the different causes any better than Wikipedia does, so if you want to learn more, you should check out their [article about color blindness](#).


## Dichromacy



**Original Color**  
12551808

**Protanopia**  
10130567

**Deuteranopia**  
11243390



**Tritanopia**  
12616846

# Trichromacy



**Original Color**  
12551808

**Protanomaly**  
10981252

**Deuteranomaly**  
11701375

**Tritanomaly**  
12617097

# Monochromacy



**Original Color**  
12551808

**Achromatopsia**  
9868950

**Achromatomaly**  
10850446

# CSS Examples

## Text

The CSS property to change the color of the text to Decimal 12551808 is called "color". The color property can be set on classes, ids or directly on the HTML element.

This example shows how text in the color #BF8680 looks like.

```
.text, #text, p{  
    color:#BF8680  
}
```

If you want to add a text shadow in that color use the text-shadow property, you can generate a text shadow directly with our [CSS Text Shadow Generator](#).

Here you see how black text with a 4 pixel #BF8680 colored shadow looks like.

```
.shadow{ text-shadow: 4px 4px 2px #BF8680
}
```

## Border

The CSS property to change the border of an element to Decimal 12551808 is called "border". The border property can be set on classes, ids or directly on the HTML element.

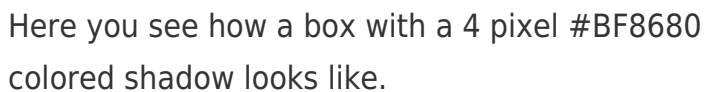
This example shows the color as border, it can be applied via the CSS property "border" or "border-color".

```
.border, #border, table{ border:4px solid
#BF8680 }
```

If only the border color should be changed use the property `border-color`.

```
.border{ border-color:#BF8680 }
```

If you want to add a box shadow in that color use:



Here you see how a box with a 4 pixel #BF8680 colored shadow looks like.

```
.boxshadow{ -moz-box-shadow:4px 4px 4px  
4px #BF8680; -webkit-box-shadow:4px 4px  
4px 4px #BF8680; box-shadow:4px 4px 4px  
4px #BF8680 }
```

# Background

The CSS property to change the background color of an element to Decimal 12551808 is called "background". The background property can be set on classes, ids or directly on the HTML element.

```
.background, #background, body{  
background:#BF8680 }
```

If only the background color should be changed can be used:

```
.background{ background-color:#BF8680 }
```

This example shows the color as background, it is applied via the CSS property "background".

To optimize and compress your CSS code, you can use our [online CSS compressor and optimizer](#) based on csstidy. If you want to create a linear or radial gradient as background or border, check our [CSS Gradient Generator](#).



Hey! You found this booklet interesting? Support Converting Colors with the new Membership Option!

The pro membership hides all ads, plus gives you double the colors in the color bucket, and more awesome pro features!

**[Learn more, Memberships starting at \\$2.50/m!](#)**

**Follow me  
on Twitter!**

@ConvertingColor