

Converting Colors

Decimal(12552535)

Have a look what the booklet for
Decimal(12552535) contains.

Decimal(12552535)	3
<i>Conversions</i>	4
<i>Details</i>	6
<i>Harmonies</i>	11
<i>Previews</i>	23
<i>Color Blindness Simulation</i>	26
<i>CSS Examples</i>	29

Color

Decimal(12552535)

Conversions

Conversions Part 1

Format	Color
Hex	BF8957
RGB	191, 137, 87
RGB Percent	75%, 54%, 34%
CMY	0.2510, 0.4627, 0.6588
CMYK	0.00, 0.28, 0.54, 0.25
HSL	29°, 45%, 55%
HSV	29°, 54%, 75%
XYZ	32.1518, 29.6558, 13.0464
YIQ	147.4460, 48.2340, -4.1020

Conversions

Conversions Part 2

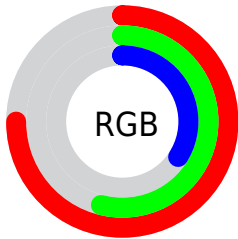
Format	Color
R_{YB}	191, 183, 87
Decimal	12552535
CIE _{Lab}	61.36, 14.95, 34.77
CIE _{LCh}	61, 37.852, 66.731
Yxy	29.6558, 0.4295, 0.3962
Android (android.graphics.Color)	4290742615 (0xFFBF8957)
YUV	147.4460, -29.7999, 38.1969
Hunter-Lab	54.4571, 10.0874, 23.9158

Details

The Decimal color **12552535** is a dark color, and the websafe version is hex **CC9966**. A complement of this color would be **5737919**, and the grayscale version is **9737364**.

A 20% lighter version of the original color is **16432778**, and **8869672** is the 20% darker color. If you saturate the color by 10%, you get **12549956**, and if you desaturate by 10%, it is **12555114**.

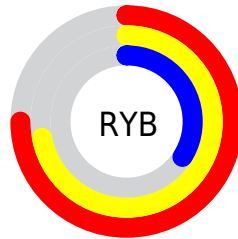
Distribution



Red (75%)

Green (54%)

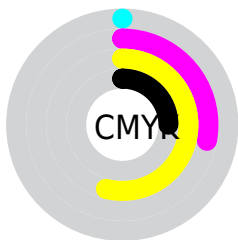
Blue (34%)



Red (75%)

Yellow (72%)

Blue (34%)

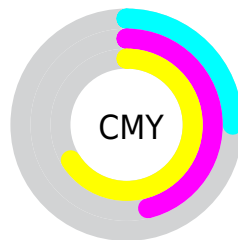


Cyan (0%)

Magenta (28%)

Yellow (54%)

Black (25%)



Cyan (25%)

Magenta (46%)

Yellow (66%)

Brightness & Saturation Gradients

These gradients show how the Decimal color 12552535 changes by changing the brightness by 10 percent. The first figure shows a shift by +10% for each color and the second figure -10%.

Similar to the brightness gradients but the following saturation gradients show a change of the Decimal color 12552535 by changing the saturation by 10% instead.

 12552535

 12552535

16777215

 10645567

 16432778

 8869672

 16767652

 7028752

 16775104

 5318912

 16777180

 3609856

 16777208

 2097152

 0

 12552535

 12552535

 12549956

 12555114

12547377

12557693

12544798

12560272

12542219

12562851

12540928

12565431

12568010

12570333

12572912

12575487

Harmonies

Analogous

The Analogous color harmony consists of three colors that are next to each other on the color wheel.



13729390



12552535



10655056

Triad

The Triadic color harmony groups three colors that are evenly spaced from another and form a triangle on the color wheel.



12552535



960155



10586570

Complementary

The Complementary color scheme is a pair of colors which are on the opposite of each other on the color wheel.



12552535



5737919

Split Complementary

Split-complementary colors differ from the complementary color scheme. The scheme consists of three colors, the original color and two neighbors of the complement color.



7247318



12552535



42171

Square

The Square scheme is like the rectangle color scheme, but the four colors are evenly spaced on the color wheel.



12552535



5547129



2400209



12877487

Rectangle

The Rectangle color scheme consists of four colors that form a rectangle on the color wheel.



12552535



9149271



2400209



9604560

Sweetspot

The Sweet Spot groups the original color and five complimentary colors.



12552535



16245712



12539790



8221029



16579836



8224125

Same Dimension

The Same Dimension uses a secret algorithm to generate beautiful new colors.



12552535



16229463



12565591



6183253



10374144



2035456

Inverse Universe

The Inverse Universe completely reimagines the original color for something new.



5737919



5745399



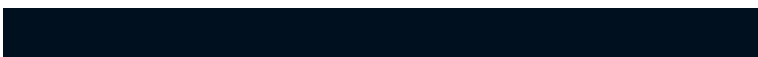
5724863



5593694



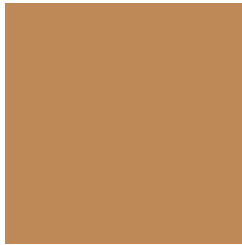
21150



4127

Previews

White Background



This preview shows how the Decimal color 12552535 looks on a white background.

Color Contrast Check

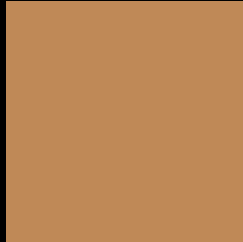
Large Text (above 18pt) WCAG AA ✓ Pass

Any Text WCAG AA × Fail

Large Text (above 18pt) WCAG AAA × Fail

Any Text WCAG AAA × Fail

Black Background



This preview shows how the Decimal color 12552535 looks on a black background.

Color Contrast Check

Large Text (above 18pt) WCAG AA ✓ Pass

Any Text WCAG AA ✓ Pass

Large Text (above 18pt) WCAG AAA ✓ Pass

Any Text WCAG AAA × Fail

If you want to check with other color combinations, try the [Color Contrast Checker](#).

Decimal 12552535 Background



This preview shows how black text looks on a background with the Decimal color 12552535.



This preview shows how white text looks on a background with the Decimal color 12552535.

Color Blindness Simulation

Color vision deficiency is a very complex topic, and I could not describe the different causes any better than Wikipedia does, so if you want to learn more, you should check out their [article about color blindness](#).


Dichromacy



Original Color
12552535

Protanopia
10654811

Deuteranopia
11898454

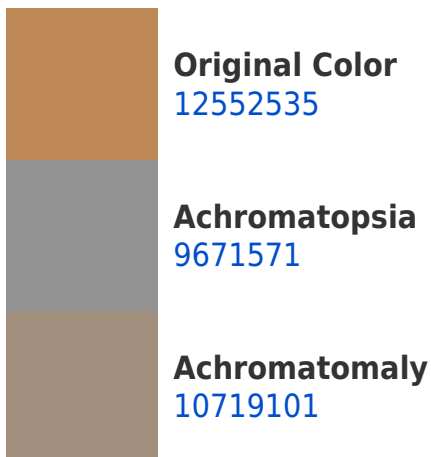


Tritanopia
12812940

Trichromacy



Monochromacy



CSS Examples

Text

The CSS property to change the color of the text to Decimal 12552535 is called "color". The color property can be set on classes, ids or directly on the HTML element.

This example shows how text in the color #BF8957 looks like.

```
.text, #text, p{  
    color:#BF8957  
}
```

If you want to add a text shadow in that color use the text-shadow property, you can generate a text shadow directly with our [CSS Text Shadow Generator](#).

Here you see how black text with a 4 pixel #BF8957 colored shadow looks like.

```
.shadow{ text-shadow: 4px 4px 2px #BF8957
}
```

Border

The CSS property to change the border of an element to Decimal 12552535 is called "border". The border property can be set on classes, ids or directly on the HTML element.

This example shows the color as border, it can be applied via the CSS property "border" or "border-color".

```
.border, #border, table{ border:4px solid
#BF8957 }
```

If only the border color should be changed use the property `border-color`.

```
.border{ border-color:#BF8957 }
```

If you want to add a box shadow in that color use:

Here you see how a box with a 4 pixel #BF8957 colored shadow looks like.

```
.boxshadow{ -moz-box-shadow:4px 4px 4px  
4px #BF8957; -webkit-box-shadow:4px 4px  
4px 4px #BF8957; box-shadow:4px 4px 4px  
4px #BF8957 }
```

Background

The CSS property to change the background color of an element to Decimal 12552535 is called "background". The background property can be set on classes, ids or directly on the HTML element.

```
.background, #background, body{  
background:#BF8957 }
```

If only the background color should be changed can be used:

```
.background{ background-color:#BF8957 }
```

This example shows the color as background, it is applied via the CSS property "background".

To optimize and compress your CSS code, you can use our [online CSS compressor and optimizer](#) based on csstidy. If you want to create a linear or radial gradient as background or border, check our [CSS Gradient Generator](#).

Hey! You found this booklet interesting? Support Converting Colors with the new Membership Option!

The pro membership hides all ads, plus gives you double the colors in the color bucket, and more awesome pro features!

[Learn more, Memberships starting at \\$2.50/m!](#)

**Follow me
on Twitter!**

@ConvertingColor