

Converting Colors

Decimal(12553104)

Have a look what the booklet for
Decimal(12553104) contains.

Decimal(12553104)	3
<i>Conversions</i>	4
<i>Details</i>	6
<i>Harmonies</i>	11
<i>Previews</i>	23
<i>Color Blindness Simulation</i>	26
<i>CSS Examples</i>	29

Color

Decimal(12553104)

Conversions

Conversions Part 1

Format	Color
Hex	BF8B90
RGB	191, 139, 144
RGB Percent	75%, 55%, 56%
CMY	0.2510, 0.4549, 0.4353
CMYK	0.00, 0.27, 0.25, 0.25
HSL	354°, 29%, 65%
HSV	354°, 27%, 75%
XYZ	35.7525, 31.5552, 30.5920
YIQ	155.1180, 29.3870, 12.5790

Conversions

Conversions Part 2

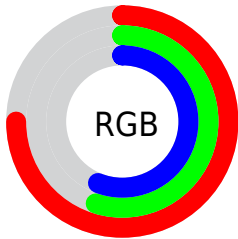
Format	Color
RYB	191, 139, 144
Decimal	12553104
CIELab	62.97, 20.53, 5.17
CIElCh	63, 21.170, 14.133
Yxy	31.5552, 0.3652, 0.3223
Android (android.graphics.Color)	4290743184 (0xFFBF8B90)
YUV	155.1180, -5.4812, 31.4685
Hunter-Lab	56.1740, 15.3035, 7.0329

Details

The Decimal color **12553104** is a light color, and the websafe version is hex **CC9999**. A complement of this color would be **9158586**, and the grayscale version is **10197915**.

A 20% lighter version of the original color is **16302534**, and **8935774** is the 20% darker color. If you saturate the color by 10%, you get **12548223**, and if you desaturate by 10%, it is **12557985**.

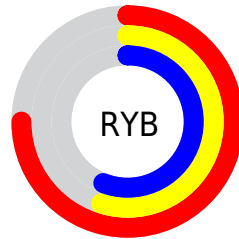
Distribution



Red (75%)

Green (55%)

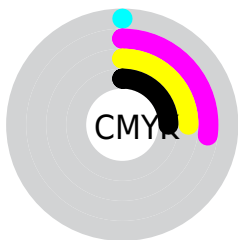
Blue (56%)



Red (75%)

Yellow (55%)

Blue (56%)

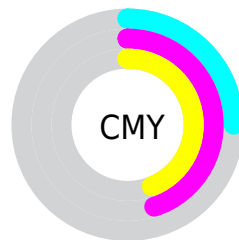


Cyan (0%)

Magenta (27%)

Yellow (25%)

Black (25%)



Cyan (25%)

Magenta (45%)

Yellow (44%)

Brightness & Saturation Gradients

These gradients show how the Decimal color 12553104 changes by changing the brightness by 10 percent. The first figure shows a shift by +10% for each color and the second figure -10%.

Similar to the brightness gradients but the following saturation gradients show a change of the Decimal color 12553104 by changing the saturation by 10% instead.

 12553104

 12553104

16777215

 10711414

 16302534

 8935774

 16768482

 7225670

 16775678

 5581360

 3937307

 2621440

 0

 12553104

 12553104

 12548223

 12557985

 12543341

 12562867

 12538460

 12567748

 12533579

 12572629

 12528698

 12577766

 12523560

 12582648

 12518679

 12582911

 12517394

Harmonies

Analogous

The Analogous color harmony consists of three colors that are next to each other on the color wheel.



12094627



12553104



12357247

Triad

The Triadic color harmony groups three colors that are evenly spaced from another and form a triangle on the color wheel.



12553104



8953725



7708092

Complementary

The Complementary color scheme is a pair of colors which are on the opposite of each other on the color wheel.



12553104



9158586

Split Complementary

Split-complementary colors differ from the complementary color scheme. The scheme consists of three colors, the original color and two neighbors of the complement color.



6660530



12553104



7578253

Square

The Square scheme is like the rectangle color scheme, but the four colors are evenly spaced on the color wheel.



12553104



10328692



6661025



9344957

Rectangle

The Rectangle color scheme consists of four colors that form a rectangle on the color wheel.



12553104



11833975



6661025



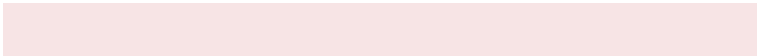
7249850

Sweetspot

The Sweet Spot groups the original color and five complimentary colors.



12553104



16245989



12225471



8220786



16579836



8224125

Same Dimension

The Same Dimension uses a secret algorithm to generate beautiful new colors.



12553104



16230062



12558475



6182230



10354703



2031619

Inverse Universe

The Inverse Universe completely reimagines the original color for something new.



12553104



16230062



9153215



6182230



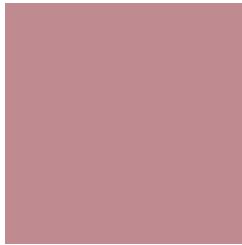
10354703



2031619

Previews

White Background



This preview shows how the Decimal color 12553104 looks on a white background.

Color Contrast Check

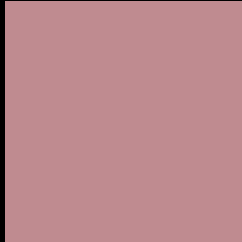
Large Text (above 18pt) WCAG AA × Fail

Any Text WCAG AA × Fail

Large Text (above 18pt) WCAG AAA × Fail

Any Text WCAG AAA × Fail

Black Background



This preview shows how the Decimal color 12553104 looks on a black background.

Color Contrast Check

Large Text (above 18pt) WCAG AA ✓ Pass

Any Text WCAG AA ✓ Pass

Large Text (above 18pt) WCAG AAA ✓ Pass

Any Text WCAG AAA ✓ Pass

If you want to check with other color combinations, try the [Color Contrast Checker](#).

Decimal 12553104 Background



This preview shows how black text looks on a background with the Decimal color 12553104.




This preview shows how white text looks on a background with the Decimal color 12553104.

Color Blindness Simulation

Color vision deficiency is a very complex topic, and I could not describe the different causes any better than Wikipedia does, so if you want to learn more, you should check out their [article about color blindness](#).

Dichromacy





Tritanopia
12618389

Trichromacy



Original Color
12553104

Protanomaly
11113364

Deuteranomaly
11702415

Tritanomaly
12618387

Monochromacy



Original Color
12553104

Achromatopsia
10197915

Achromatomaly
11048343

CSS Examples

Text

The CSS property to change the color of the text to Decimal 12553104 is called "color". The color property can be set on classes, ids or directly on the HTML element.

This example shows how text in the color #BF8B90 looks like.

```
.text, #text, p{  
    color:#BF8B90  
}
```

If you want to add a text shadow in that color use the text-shadow property, you can generate a text shadow directly with our [CSS Text Shadow Generator](#).

Here you see how black text with a 4 pixel #BF8B90 colored shadow looks like.

```
.shadow{ text-shadow: 4px 4px 2px #BF8B90
}
```

Border

The CSS property to change the border of an element to Decimal 12553104 is called "border". The border property can be set on classes, ids or directly on the HTML element.

This example shows the color as border, it can be applied via the CSS property "border" or "border-color".

```
.border, #border, table{ border:4px solid
#BF8B90 }
```

If only the border color should be changed use the property `border-color`.

```
.border{ border-color:#BF8B90 }
```

If you want to add a box shadow in that color use:

Here you see how a box with a 4 pixel #BF8B90 colored shadow looks like.

```
.boxshadow{ -moz-box-shadow:4px 4px 4px  
4px #BF8B90; -webkit-box-shadow:4px 4px  
4px 4px #BF8B90; box-shadow:4px 4px 4px  
4px #BF8B90 }
```

Background

The CSS property to change the background color of an element to Decimal 12553104 is called "background". The background property can be set on classes, ids or directly on the HTML element.

```
.background, #background, body{  
background:#BF8B90 }
```

If only the background color should be changed can be used:

```
.background{ background-color:#BF8B90 }
```

This example shows the color as background, it is applied via the CSS property "background".

To optimize and compress your CSS code, you can use our [online CSS compressor and optimizer](#) based on csstidy. If you want to create a linear or radial gradient as background or border, check our [CSS Gradient Generator](#).

Hey! You found this booklet interesting? Support Converting Colors with the new Membership Option!

The pro membership hides all ads, plus gives you double the colors in the color bucket, and more awesome pro features!

[Learn more, Memberships starting at \\$2.50/m!](#)

**Follow me
on Twitter!**

@ConvertingColor