

Converting Colors

Decimal(12553599)

Have a look what the booklet for
Decimal(12553599) contains.

Decimal(12553599)	3
<i>Conversions</i>	4
<i>Details</i>	6
<i>Harmonies</i>	11
<i>Previews</i>	23
<i>Color Blindness Simulation</i>	26
<i>CSS Examples</i>	29

Color

Decimal(12553599)

Conversions

Conversions Part 1

Format	Color
Hex	BF8D7F
RGB	191, 141, 127
RGB Percent	75%, 55%, 50%
CMY	0.2510, 0.4471, 0.5020
CMYK	0.00, 0.26, 0.34, 0.25
HSL	13°, 33%, 62%
HSV	13°, 34%, 75%
XYZ	34.8415, 31.6584, 24.3530
YIQ	154.3540, 34.2940, 6.2460

Conversions

Conversions Part 2

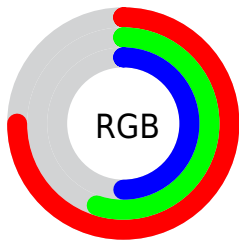
Format	Color
RYB	191, 145, 127
Decimal	12553599
CIELab	63.06, 17.07, 14.91
CIElCh	63, 22.660, 41.136
Yxy	31.6584, 0.3835, 0.3485
Android (android.graphics.Color)	4290743679 (0xFFBF8D7F)
YUV	154.3540, -13.4855, 32.1385
Hunter-Lab	56.2658, 12.0674, 13.7241

Details

The Decimal color **12553599** is a dark color, and the websafe version is hex **CC9999**. A complement of this color would be **8368575**, and the grayscale version is **10132122**.

A 20% lighter version of the original color is **16368564**, and **8936270** is the 20% darker color. If you saturate the color by 10%, you get **12549740**, and if you desaturate by 10%, it is **12557458**.

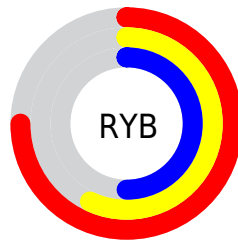
Distribution



Red (75%)

Green (55%)

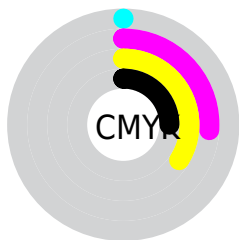
Blue (50%)



Red (75%)

Yellow (57%)

Blue (50%)

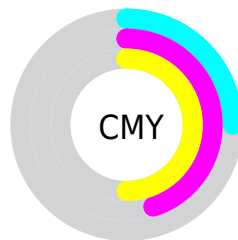


Cyan (0%)

Magenta (26%)

Yellow (34%)

Black (25%)



Cyan (25%)

Magenta (45%)

Yellow (50%)

Brightness & Saturation Gradients

These gradients show how the Decimal color 12553599 changes by changing the brightness by 10 percent. The first figure shows a shift by +10% for each color and the second figure -10%.

Similar to the brightness gradients but the following saturation gradients show a change of the Decimal color 12553599 by changing the saturation by 10% instead.

 12553599

 12553599

16777215

 10711910

 16368564

 8936270

 16768975

 7226167

 16776172

 5516322

 3872524

 2424832

 0

 12553599

 12553599

 12549740

 12557458

 12545881

 12561317

 12542022

 12565176

 12538163

 12569035

 12534304

 12572895

 12530444

 12576754

 12528128

 12580351

 12582911

Harmonies

Analogous

The Analogous color harmony consists of three colors that are next to each other on the color wheel.



12683922



12553599



11768691

Triad

The Triadic color harmony groups three colors that are evenly spaced from another and form a triangle on the color wheel.



12553599



7578507



9083072

Complementary

The Complementary color scheme is a pair of colors which are on the opposite of each other on the color wheel.



12553599



8368575

Split Complementary

Split-complementary colors differ from the complementary color scheme. The scheme consists of three colors, the original color and two neighbors of the complement color.



7380670



12553599



6399136

Square

The Square scheme is like the rectangle color scheme, but the four colors are evenly spaced on the color wheel.



12553599



9019258



6267570



10850743

Rectangle

The Rectangle color scheme consists of four colors that form a rectangle on the color wheel.



12553599



10983536



6267570



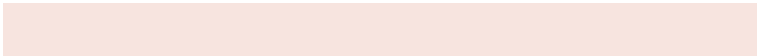
8493760

Sweetspot

The Sweet Spot groups the original color and five complimentary colors.



12553599



16245983



12550065



8221038



16579836



8224125

Same Dimension

The Same Dimension uses a secret algorithm to generate beautiful new colors.



12553599



16231060



12561791



6182741



10363648



2033408

Inverse Universe

The Inverse Universe completely reimagines the original color for something new.



8368575



9757431



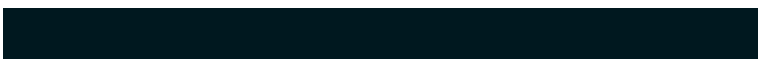
8360383



5594206



31902



6175

Previews

White Background



This preview shows how the Decimal color 12553599 looks on a white background.

Color Contrast Check

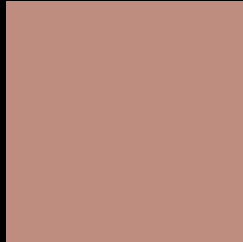
Large Text (above 18pt) WCAG AA × Fail

Any Text WCAG AA × Fail

Large Text (above 18pt) WCAG AAA × Fail

Any Text WCAG AAA × Fail

Black Background



This preview shows how the Decimal color 12553599 looks on a black background.

Color Contrast Check

Large Text (above 18pt) WCAG AA ✓ Pass

Any Text WCAG AA ✓ Pass

Large Text (above 18pt) WCAG AAA ✓ Pass

Any Text WCAG AAA ✓ Pass

If you want to check with other color combinations, try the [Color Contrast Checker](#).

Decimal 12553599 Background



This preview shows how black text looks on a background with the Decimal color 12553599.




This preview shows how white text looks on a background with the Decimal color 12553599.

Color Blindness Simulation

Color vision deficiency is a very complex topic, and I could not describe the different causes any better than Wikipedia does, so if you want to learn more, you should check out their [article about color blindness](#).

Dichromacy





Tritanopia
12683924

Trichromacy



Original Color
12553599

Protanomaly
11244675

Deuteranomaly
11964798

Tritanomaly
12618636

Monochromacy



Original Color
12553599

Achromatopsia
10132122

Achromatomaly
10982800

CSS Examples

Text

The CSS property to change the color of the text to Decimal 12553599 is called "color". The color property can be set on classes, ids or directly on the HTML element.

This example shows how text in the color #BF8D7F looks like.

```
.text, #text, p{  
    color:#BF8D7F  
}
```

If you want to add a text shadow in that color use the text-shadow property, you can generate a text shadow directly with our [CSS Text Shadow Generator](#).

Here you see how black text with a 4 pixel #BF8D7F colored shadow looks like.

```
.shadow{ text-shadow: 4px 4px 2px #BF8D7F
}
```

Border

The CSS property to change the border of an element to Decimal 12553599 is called "border". The border property can be set on classes, ids or directly on the HTML element.

This example shows the color as border, it can be applied via the CSS property "border" or "border-color".

```
.border, #border, table{ border:4px solid
#BF8D7F }
```

If only the border color should be changed use the property `border-color`.

```
.border{ border-color:#BF8D7F }
```

If you want to add a box shadow in that color use:

Here you see how a box with a 4 pixel #BF8D7F colored shadow looks like.

```
.boxshadow{ -moz-box-shadow:4px 4px 4px  
4px #BF8D7F; -webkit-box-shadow:4px 4px  
4px 4px #BF8D7F; box-shadow:4px 4px 4px  
4px #BF8D7F }
```

Background

The CSS property to change the background color of an element to Decimal 12553599 is called "background". The background property can be set on classes, ids or directly on the HTML element.

```
.background, #background, body{  
background:#BF8D7F }
```

If only the background color should be changed can be used:

```
.background{ background-color:#BF8D7F }
```

This example shows the color as background, it is applied via the CSS property "background".

To optimize and compress your CSS code, you can use our [online CSS compressor and optimizer](#) based on csstidy. If you want to create a linear or radial gradient as background or border, check our [CSS Gradient Generator](#).

Hey! You found this booklet interesting? Support Converting Colors with the new Membership Option!

The pro membership hides all ads, plus gives you double the colors in the color bucket, and more awesome pro features!

[Learn more, Memberships starting at \\$2.50/m!](#)

**Follow me
on Twitter!**

@ConvertingColor