

Converting Colors

Decimal(12555633)

Have a look what the booklet for
Decimal(12555633) contains.

Decimal(12555633)	3
<i>Conversions</i>	4
<i>Details</i>	6
<i>Harmonies</i>	11
<i>Previews</i>	23
<i>Color Blindness Simulation</i>	26
<i>CSS Examples</i>	29

Color

Decimal(12555633)

Conversions

Conversions Part 1

Format	Color
Hex	BF9571
RGB	191, 149, 113
RGB Percent	75%, 58%, 44%
CMY	0.2510, 0.4157, 0.5569
CMYK	0.00, 0.22, 0.41, 0.25
HSL	28°, 38%, 60%
HSV	28°, 41%, 75%
XYZ	35.2139, 33.7635, 20.2838
YIQ	157.4540, 36.5880, -2.2920

Conversions

Conversions Part 2

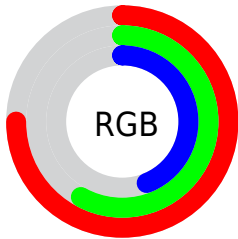
Format	Color
RYB	191, 180, 113
Decimal	12555633
CIELab	64.77, 10.95, 25.04
CIELCh	65, 27.329, 66.390
Yxy	33.7635, 0.3945, 0.3783
Android (android.graphics.Color)	4290745713 (0xFFBF9571)
YUV	157.4540, -21.9158, 29.4198
Hunter-Lab	58.1064, 6.4894, 19.9775

Details

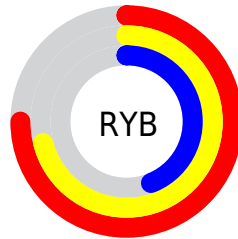
The Decimal color **12555633** is a light color, and the websafe version is hex **CC9966**. A complement of this color would be **7445439**, and the grayscale version is **10395294**.

A 20% lighter version of the original color is **16370597**, and **8938049** is the 20% darker color. If you saturate the color by 10%, you get **12553054**, and if you desaturate by 10%, it is **12558212**.

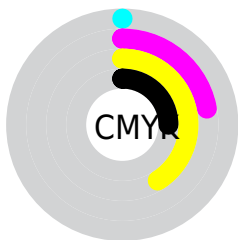
Distribution



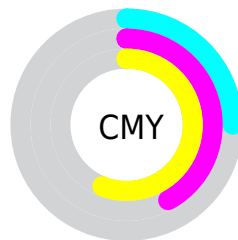
- Red (75%)
- Green (58%)
- Blue (44%)



- Red (75%)
- Yellow (71%)
- Blue (44%)



- Cyan (0%)
- Magenta (22%)
- Yellow (41%)
- Black (25%)



- Cyan (25%)
- Magenta (42%)
- Yellow (56%)

Brightness & Saturation Gradients

These gradients show how the Decimal color 12555633 changes by changing the brightness by 10 percent. The first figure shows a shift by +10% for each color and the second figure -10%.

Similar to the brightness gradients but the following saturation gradients show a change of the Decimal color 12555633 by changing the saturation by 10% instead.

 12555633

 12555633

16777215

 10713944

 16370597

 8938049

 16771008

 7162410

 16777180

 5452820

 16777209

 3874304

 2295808

 0

 12555633

 12555633

 12553054

 12558212

 12550219

 12561047

 12547640

 12563626

 12545061

 12566205

 12542482

 12568785

 12539904

 12571620

 12574199

 12576767

 12579583

Harmonies

Analogous

The Analogous color harmony consists of three colors that are next to each other on the color wheel.



13405825



12555633



11115884

Triad

The Triadic color harmony groups three colors that are evenly spaced from another and form a triangle on the color wheel.



12555633



5876642



10982852

Complementary

The Complementary color scheme is a pair of colors which are on the opposite of each other on the color wheel.



12555633



7445439

Split Complementary

Split-complementary colors differ from the complementary color scheme. The scheme consists of three colors, the original color and two neighbors of the complement color.



8756941



12555633



5286329

Square

The Square scheme is like the rectangle color scheme, but the four colors are evenly spaced on the color wheel.



12555633



7514505



6530505



12684977

Rectangle

The Rectangle color scheme consists of four colors that form a rectangle on the color wheel.



12555633



10003057



6530505



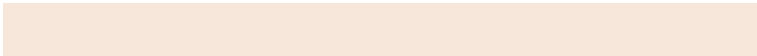
10328265

Sweetspot

The Sweet Spot groups the original color and five complimentary colors.



12555633



16246746



12546460



8221803



16579836



8224125

Same Dimension

The Same Dimension uses a secret algorithm to generate beautiful new colors.



12555633



16234110



12565361



6183253



10373376



2035200

Inverse Universe

The Inverse Universe completely reimagines the original color for something new.



7445439



8306679



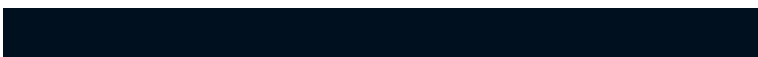
7435711



5593694



21918



4127

Previews

White Background



This preview shows how the Decimal color 12555633 looks on a white background.

Color Contrast Check

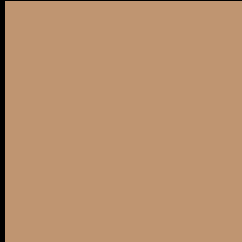
Large Text (above 18pt) WCAG AA × Fail

Any Text WCAG AA × Fail

Large Text (above 18pt) WCAG AAA × Fail

Any Text WCAG AAA × Fail

Black Background



This preview shows how the Decimal color 12555633 looks on a black background.

Color Contrast Check

Large Text (above 18pt) WCAG AA ✓ Pass

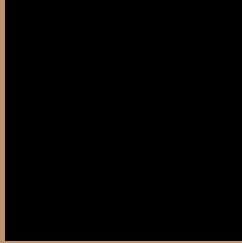
Any Text WCAG AA ✓ Pass

Large Text (above 18pt) WCAG AAA ✓ Pass

Any Text WCAG AAA ✓ Pass

If you want to check with other color combinations, try the [Color Contrast Checker](#).

Decimal 12555633 Background



This preview shows how black text looks on a background with the Decimal color 12555633.



This preview shows how white text looks on a background with the Decimal color 12555633.

Color Blindness Simulation

Color vision deficiency is a very complex topic, and I could not describe the different causes any better than Wikipedia does, so if you want to learn more, you should check out their [article about color blindness](#).

Dichromacy



Original Color
12555633

Protanopia
11115893

Deuteranopia
12294001



Tritanopia
12816282

Trichromacy



Original Color
12555633

Protanomaly
11639412

Deuteranomaly
12359281

Tritanomaly
12751243

Monochromacy



Original Color
12555633

Achromatopsia
10329501

Achromatomaly
11115149

CSS Examples

Text

The CSS property to change the color of the text to Decimal 12555633 is called "color". The color property can be set on classes, ids or directly on the HTML element.

This example shows how text in the color #BF9571 looks like.

```
.text, #text, p{  
    color:#BF9571  
}
```

If you want to add a text shadow in that color use the text-shadow property, you can generate a text shadow directly with our [CSS Text Shadow Generator](#).

Here you see how black text with a 4 pixel #BF9571 colored shadow looks like.

```
.shadow{ text-shadow: 4px 4px 2px #BF9571  
}
```

Border

The CSS property to change the border of an element to Decimal 12555633 is called "border". The border property can be set on classes, ids or directly on the HTML element.

This example shows the color as border, it can be applied via the CSS property "border" or "border-color".

```
.border, #border, table{ border:4px solid  
#BF9571 }
```

If only the border color should be changed use the property `border-color`.

```
.border{ border-color:#BF9571 }
```

If you want to add a box shadow in that color use:

Here you see how a box with a 4 pixel #BF9571 colored shadow looks like.

```
.boxshadow{ -moz-box-shadow:4px 4px 4px  
4px #BF9571; -webkit-box-shadow:4px 4px  
4px 4px #BF9571; box-shadow:4px 4px 4px  
4px #BF9571 }
```

Background

The CSS property to change the background color of an element to Decimal 12555633 is called "background". The background property can be set on classes, ids or directly on the HTML element.

```
.background, #background, body{  
background:#BF9571 }
```

If only the background color should be changed can be used:

```
.background{ background-color:#BF9571 }
```

This example shows the color as background, it is applied via the CSS property "background".

To optimize and compress your CSS code, you can use our [online CSS compressor and optimizer](#) based on csstidy. If you want to create a linear or radial gradient as background or border, check our [CSS Gradient Generator](#).

Hey! You found this booklet interesting? Support Converting Colors with the new Membership Option!

The pro membership hides all ads, plus gives you double the colors in the color bucket, and more awesome pro features!

[Learn more, Memberships starting at \\$2.50/m!](#)

**Follow me
on Twitter!**

@ConvertingColor