

Converting Colors

Decimal(12556933)

Have a look what the booklet for
Decimal(12556933) contains.

Decimal(12556933)	3
<i>Conversions</i>	4
<i>Details</i>	6
<i>Harmonies</i>	11
<i>Previews</i>	23
<i>Color Blindness Simulation</i>	26
<i>CSS Examples</i>	29

Color

Decimal(12556933)

Conversions

Conversions Part 1

Format	Color
Hex	BF9A85
RGB	191, 154, 133
RGB Percent	75%, 60%, 52%
CMY	0.2510, 0.3961, 0.4784
CMYK	0.00, 0.19, 0.30, 0.25
HSL	22°, 31%, 64%
HSV	22°, 30%, 75%
XYZ	37.2751, 35.8810, 27.1514
YIQ	162.6690, 28.7930, 1.3130

Conversions

Conversions Part 2

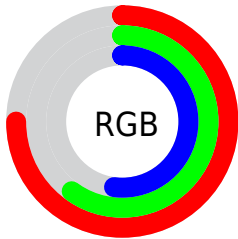
Format	Color
RYB	191, 166, 133
Decimal	12556933
CIELab	66.43, 10.69, 16.23
CIElCh	66, 19.436, 56.640
Yxy	35.8810, 0.3716, 0.3577
Android (android.graphics.Color)	4290747013 (0xFFBF9A85)
YUV	162.6690, -14.6268, 24.8463
Hunter-Lab	59.9008, 6.2508, 15.0560

Details

The Decimal color **12556933** is a light color, and the websafe version is hex **CC9999**. A complement of this color would be **8759999**, and the grayscale version is **10724259**.

A 20% lighter version of the original color is **16306362**, and **9004883** is the 20% darker color. If you saturate the color by 10%, you get **12553842**, and if you desaturate by 10%, it is **12560024**.

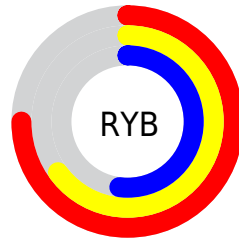
Distribution



Red (75%)

Green (60%)

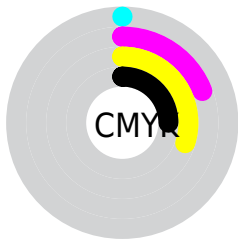
Blue (52%)



Red (75%)

Yellow (65%)

Blue (52%)

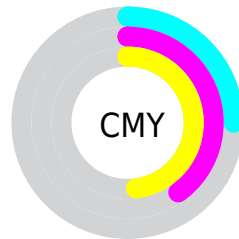


Cyan (0%)

Magenta (19%)

Yellow (30%)

Black (25%)



Cyan (25%)

Magenta (40%)

Yellow (48%)

Brightness & Saturation Gradients

These gradients show how the Decimal color 12556933 changes by changing the brightness by 10 percent. The first figure shows a shift by +10% for each color and the second figure -10%.

Similar to the brightness gradients but the following saturation gradients show a change of the Decimal color 12556933 by changing the saturation by 10% instead.

 12556933

 12556933

16777215

 10715244

 16306362

 9004883

 16772566

 7229244

 16777202

 5584934

 4006418

 2493952

 0

 12556933

 12556933

 12553842

 12560024

 12550751

 12563115

 12547404

 12566462

 12544313

 12569553

 12541222

 12572645

 12538130

 12575736

 12535040

 12578815

 12581887

 12582911

Harmonies

Analogous

The Analogous color harmony consists of three colors that are next to each other on the color wheel.



13014675



12556933



11640959

Triad

The Triadic color harmony groups three colors that are evenly spaced from another and form a triangle on the color wheel.



12556933



7973791



10657473

Complementary

The Complementary color scheme is a pair of colors which are on the opposite of each other on the color wheel.



12556933



8759999

Split Complementary

Split-complementary colors differ from the complementary color scheme. The scheme consists of three colors, the original color and two neighbors of the complement color.



9151684



12556933



7449520

Square

The Square scheme is like the rectangle color scheme, but the four colors are evenly spaced on the color wheel.



12556933



9087374



7907518



11966645

Rectangle

The Rectangle color scheme consists of four colors that form a rectangle on the color wheel.



12556933



10855296



7907518



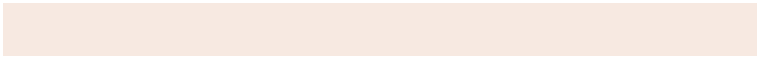
10133699

Sweetspot

The Sweet Spot groups the original color and five complimentary colors.



12556933



16247265



12551595



8221807



16579836



8224125

Same Dimension

The Same Dimension uses a secret algorithm to generate beautiful new colors.



12556933



16236446



12564101



6182997



10369280



2034432

Inverse Universe

The Inverse Universe completely reimagines the original color for something new.



8759999



10409975



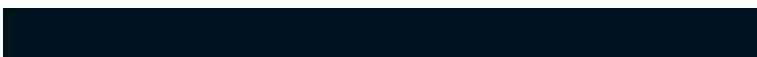
8752831



5593950



26014



5151

Previews

White Background



This preview shows how the Decimal color 12556933 looks on a white background.

Color Contrast Check

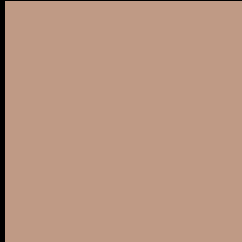
Large Text (above 18pt) WCAG AA × Fail

Any Text WCAG AA × Fail

Large Text (above 18pt) WCAG AAA × Fail

Any Text WCAG AAA × Fail

Black Background



This preview shows how the Decimal color 12556933 looks on a black background.

Color Contrast Check

Large Text (above 18pt) WCAG AA ✓ Pass

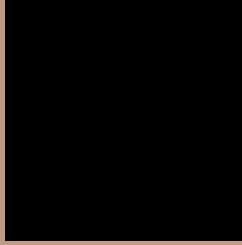
Any Text WCAG AA ✓ Pass

Large Text (above 18pt) WCAG AAA ✓ Pass

Any Text WCAG AAA ✓ Pass

If you want to check with other color combinations, try the [Color Contrast Checker](#).

Decimal 12556933 Background



This preview shows how black text looks on a background with the Decimal color 12556933.



This preview shows how white text looks on a background with the Decimal color 12556933.

Color Blindness Simulation

Color vision deficiency is a very complex topic, and I could not describe the different causes any better than Wikipedia does, so if you want to learn more, you should check out their [article about color blindness](#).

Dichromacy





Tritanopia
12752546

Trichromacy



Original Color

12556933

Protanomaly

11705992

Deuteranomaly

12360581

Tritanomaly

12687255

Monochromacy



Original Color

12556933

Achromatopsia

10724259

Achromatomaly

11378840

CSS Examples

Text

The CSS property to change the color of the text to Decimal 12556933 is called "color". The color property can be set on classes, ids or directly on the HTML element.

This example shows how text in the color #BF9A85 looks like.

```
.text, #text, p{  
    color:#BF9A85  
}
```

If you want to add a text shadow in that color use the text-shadow property, you can generate a text shadow directly with our [CSS Text Shadow Generator](#).

Here you see how black text with a 4 pixel #BF9A85 colored shadow looks like.

```
.shadow{ text-shadow: 4px 4px 2px #BF9A85
}
```

Border

The CSS property to change the border of an element to Decimal 12556933 is called "border". The border property can be set on classes, ids or directly on the HTML element.

This example shows the color as border, it can be applied via the CSS property "border" or "border-color".

```
.border, #border, table{ border:4px solid
#BF9A85 }
```

If only the border color should be changed use the property `border-color`.

```
.border{ border-color:#BF9A85 }
```

If you want to add a box shadow in that color use:

Here you see how a box with a 4 pixel #BF9A85 colored shadow looks like.

```
.boxshadow{ -moz-box-shadow:4px 4px 4px  
4px #BF9A85; -webkit-box-shadow:4px 4px  
4px 4px #BF9A85; box-shadow:4px 4px 4px  
4px #BF9A85 }
```

Background

The CSS property to change the background color of an element to Decimal 12556933 is called "background". The background property can be set on classes, ids or directly on the HTML element.

```
.background, #background, body{  
background:#BF9A85 }
```

If only the background color should be changed can be used:

```
.background{ background-color:#BF9A85 }
```

This example shows the color as background, it is applied via the CSS property "background".

To optimize and compress your CSS code, you can use our [online CSS compressor and optimizer](#) based on csstidy. If you want to create a linear or radial gradient as background or border, check our [CSS Gradient Generator](#).

Hey! You found this booklet interesting? Support Converting Colors with the new Membership Option!

The pro membership hides all ads, plus gives you double the colors in the color bucket, and more awesome pro features!

[Learn more, Memberships starting at \\$2.50/m!](#)

**Follow me
on Twitter!**

@ConvertingColor