

Converting Colors

Decimal(12557205)

Have a look what the booklet for
Decimal(12557205) contains.

Decimal(12557205)	3
<i>Conversions</i>	4
<i>Details</i>	6
<i>Harmonies</i>	11
<i>Previews</i>	23
<i>Color Blindness Simulation</i>	26
<i>CSS Examples</i>	29

Color

Decimal(12557205)

Conversions

Conversions Part 1

Format	Color
Hex	BF9B95
RGB	191, 155, 149
RGB Percent	75%, 61%, 58%
CMY	0.2510, 0.3922, 0.4157
CMYK	0.00, 0.19, 0.22, 0.25
HSL	9°, 25%, 67%
HSV	9°, 22%, 75%
XYZ	38.6320, 36.6890, 33.4793
YIQ	165.0800, 23.3820, 5.7660

Conversions

Conversions Part 2

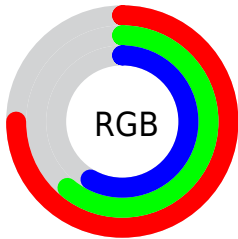
Format	Color
RYB	191, 156, 149
Decimal	12557205
CIELab	67.04, 12.43, 8.19
CIELCh	67, 14.884, 33.374
Yxy	36.6890, 0.3551, 0.3372
Android (android.graphics.Color)	4290747285 (0xFFBF9B95)
YUV	165.0800, -7.9274, 22.7318
Hunter-Lab	60.5714, 7.8460, 9.6290

Details

The Decimal color **12557205** is a light color, and the websafe version is hex **CC9999**. A complement of this color would be **9812415**, and the grayscale version is **10855845**.

A 20% lighter version of the original color is **16306891**, and **9005154** is the 20% darker color. If you saturate the color by 10%, you get **12553090**, and if you desaturate by 10%, it is **12561320**.

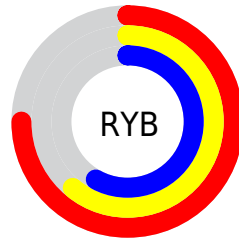
Distribution



Red (75%)

Green (61%)

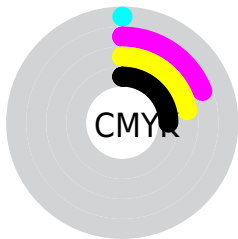
Blue (58%)



Red (75%)

Yellow (61%)

Blue (58%)

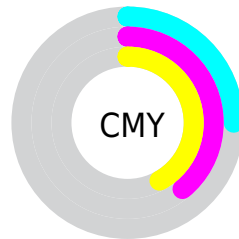


Cyan (0%)

Magenta (19%)

Yellow (22%)

Black (25%)



Cyan (25%)

Magenta (39%)

Yellow (42%)

Brightness & Saturation Gradients

These gradients show how the Decimal color 12557205 changes by changing the brightness by 10 percent. The first figure shows a shift by +10% for each color and the second figure -10%.

Similar to the brightness gradients but the following saturation gradients show a change of the Decimal color 12557205 by changing the saturation by 10% instead.

 12557205

 12557205

16777215

 10781051

 16306891

 9005154

 16772839

 7295051

 5650740

 4072223

 2625030

 0

 12557205

 12557205

 12553090

 12561320

 12548719

 12565691

 12544604

 12569806

 12540489

 12573921

 12536118

 12578293

 12532002

 12582399

 12527631

 12582911

 12524288

Harmonies

Analogous

The Analogous color harmony consists of three colors that are next to each other on the color wheel.



12491426



12557205



12099212

Triad

The Triadic color harmony groups three colors that are evenly spaced from another and form a triangle on the color wheel.



12557205



9349783



9872574

Complementary

The Complementary color scheme is a pair of colors which are on the opposite of each other on the color wheel.



12557205



9812415

Split Complementary

Split-complementary colors differ from the complementary color scheme. The scheme consists of three colors, the original color and two neighbors of the complement color.



8890555



12557205



8629156

Square

The Square scheme is like the rectangle color scheme, but the four colors are evenly spaced on the color wheel.



12557205



10332045



8432305



11050937

Rectangle

The Rectangle color scheme consists of four colors that form a rectangle on the color wheel.



12557205



11641225



8432305



9545149

Sweetspot

The Sweet Spot groups the original color and five complimentary colors.



12557205



16247270



12555705



8221811



16579836



8224125

Same Dimension

The Same Dimension uses a secret algorithm to generate beautiful new colors.



12557205



16236727



12562581



6182485



10360576



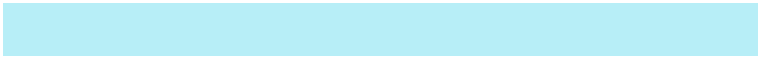
2032640

Inverse Universe

The Inverse Universe completely reimagines the original color for something new.



9812415



12054263



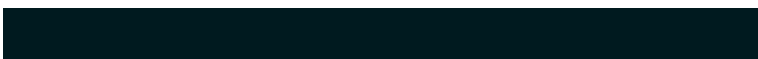
9807039



5594462



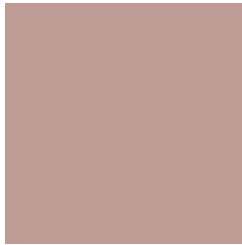
34974



6687

Previews

White Background



This preview shows how the Decimal color 12557205 looks on a white background.

Color Contrast Check

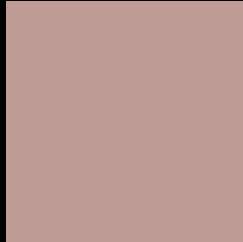
Large Text (above 18pt) WCAG AA × Fail

Any Text WCAG AA × Fail

Large Text (above 18pt) WCAG AAA × Fail

Any Text WCAG AAA × Fail

Black Background



This preview shows how the Decimal color 12557205 looks on a black background.

Color Contrast Check

Large Text (above 18pt) WCAG AA ✓ Pass

Any Text WCAG AA ✓ Pass

Large Text (above 18pt) WCAG AAA ✓ Pass

Any Text WCAG AAA ✓ Pass

If you want to check with other color combinations, try the [Color Contrast Checker](#).

Decimal 12557205 Background



This preview shows how black text looks on a background with the Decimal color 12557205.



This preview shows how white text looks on a background with the Decimal color 12557205.

Color Blindness Simulation

Color vision deficiency is a very complex topic, and I could not describe the different causes any better than Wikipedia does, so if you want to learn more, you should check out their [article about color blindness](#).


Dichromacy



Original Color
12557205

Protanopia
11117465

Deuteranopia
12164757



Tritanopia
12687780

Trichromacy



Original Color
12557205

Protanomaly
11640984

Deuteranomaly
12295573

Tritanomaly
12622495

Monochromacy



Original Color
12557205

Achromatopsia
10855845

Achromatomaly
11444639

CSS Examples

Text

The CSS property to change the color of the text to Decimal 12557205 is called "color". The color property can be set on classes, ids or directly on the HTML element.

This example shows how text in the color #BF9B95 looks like.

```
.text, #text, p{  
  color:#BF9B95  
}
```

If you want to add a text shadow in that color use the text-shadow property, you can generate a text shadow directly with our [CSS Text Shadow Generator](#).

Here you see how black text with a 4 pixel #BF9B95 colored shadow looks like.

```
.shadow{ text-shadow: 4px 4px 2px #BF9B95
}
```

Border

The CSS property to change the border of an element to Decimal 12557205 is called "border". The border property can be set on classes, ids or directly on the HTML element.

This example shows the color as border, it can be applied via the CSS property "border" or "border-color".

```
.border, #border, table{ border:4px solid
#BF9B95 }
```

If only the border color should be changed use the property `border-color`.

```
.border{ border-color:#BF9B95 }
```

If you want to add a box shadow in that color use:

Here you see how a box with a 4 pixel #BF9B95 colored shadow looks like.

```
.boxshadow{ -moz-box-shadow:4px 4px 4px  
4px #BF9B95; -webkit-box-shadow:4px 4px  
4px 4px #BF9B95; box-shadow:4px 4px 4px  
4px #BF9B95 }
```

Background

The CSS property to change the background color of an element to Decimal 12557205 is called "background". The background property can be set on classes, ids or directly on the HTML element.

```
.background, #background, body{  
background:#BF9B95 }
```

If only the background color should be changed can be used:

```
.background{ background-color:#BF9B95 }
```

This example shows the color as background, it is applied via the CSS property "background".

To optimize and compress your CSS code, you can use our [online CSS compressor and optimizer](#) based on csstidy. If you want to create a linear or radial gradient as background or border, check our [CSS Gradient Generator](#).

Hey! You found this booklet interesting? Support Converting Colors with the new Membership Option!

The pro membership hides all ads, plus gives you double the colors in the color bucket, and more awesome pro features!

[Learn more, Memberships starting at \\$2.50/m!](#)

**Follow me
on Twitter!**

@ConvertingColor