

Converting Colors

Decimal(12558229)

Have a look what the booklet for
Decimal(12558229) contains.

Decimal(12558229)	3
<i>Conversions</i>	4
<i>Details</i>	6
<i>Harmonies</i>	11
<i>Previews</i>	23
<i>Color Blindness Simulation</i>	26
<i>CSS Examples</i>	29

Color

Decimal(12558229)

Conversions

Conversions Part 1

Format	Color
Hex	BF9F95
RGB	191, 159, 149
RGB Percent	75%, 62%, 58%
CMY	0.2510, 0.3765, 0.4157
CMYK	0.00, 0.17, 0.22, 0.25
HSL	14°, 25%, 67%
HSV	14°, 22%, 75%
XYZ	39.3088, 38.0426, 33.7049
YIQ	167.4280, 22.2820, 3.6740

Conversions

Conversions Part 2

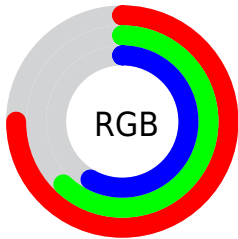
Format	Color
R _Y B	191, 162, 149
Decimal	12558229
CIE Lab	68.05, 10.23, 9.62
CIE LCh	68, 14.046, 43.251
Yxy	38.0426, 0.3540, 0.3426
Android (android.graphics.Color)	4290748309 (0xFFBF9F95)
YUV	167.4280, -9.0850, 20.6726
Hunter-Lab	61.6787, 5.8233, 10.7754

Details

The Decimal color **12558229** is a light color, and the websafe version is hex **CC9999**. A complement of this color would be **9811391**, and the grayscale version is **11053224**.

A 20% lighter version of the original color is **16307915**, and **9006178** is the 20% darker color. If you saturate the color by 10%, you get **12554370**, and if you desaturate by 10%, it is **12562088**.

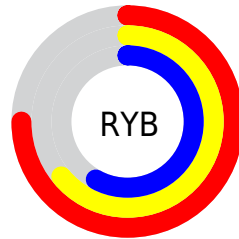
Distribution



Red (75%)

Green (62%)

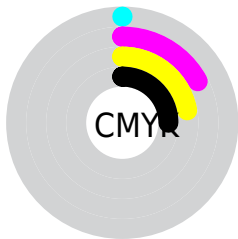
Blue (58%)



Red (75%)

Yellow (64%)

Blue (58%)

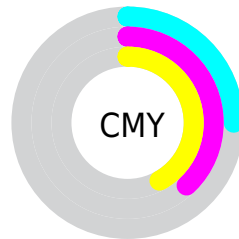


Cyan (0%)

Magenta (17%)

Yellow (22%)

Black (25%)



Cyan (25%)

Magenta (38%)

Yellow (42%)

Brightness & Saturation Gradients

These gradients show how the Decimal color 12558229 changes by changing the brightness by 10 percent. The first figure shows a shift by +10% for each color and the second figure -10%.

Similar to the brightness gradients but the following saturation gradients show a change of the Decimal color 12558229 by changing the saturation by 10% instead.

 12558229

 12558229

16777215

 10782075

 16307915

 9006178

 16773863

 7295818

 5651508

 4072991

 2626054

 327680

 0

 12558229

 12558229

 12554370

 12562088

 12550767

 12565691

 12546908

 12569550

 12543305

 12573153

 12539446

 12577013

 12535842

 12580607

 12531983

 12582911

 12528896

Harmonies

Analogous

The Analogous color harmony consists of three colors that are next to each other on the color wheel.



12688801



12558229



12034958

Triad

The Triadic color harmony groups three colors that are evenly spaced from another and form a triangle on the color wheel.



12558229



9350558



10462654

Complementary

The Complementary color scheme is a pair of colors which are on the opposite of each other on the color wheel.



12558229



9811391

Split Complementary

Split-complementary colors differ from the complementary color scheme. The scheme consists of three colors, the original color and two neighbors of the complement color.



9480638



12558229



8826283

Square

The Square scheme is like the rectangle color scheme, but the four colors are evenly spaced on the color wheel.



12558229



10267283



8826039



11510200

Rectangle

The Rectangle color scheme consists of four colors that form a rectangle on the color wheel.



12558229



11511181



8826039



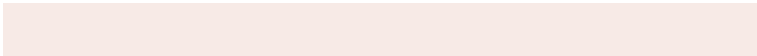
10135231

Sweetspot

The Sweet Spot groups the original color and five complimentary colors.



12558229



16247526



12555701



8222067



16579836



8224125

Same Dimension

The Same Dimension uses a secret algorithm to generate beautiful new colors.



12558229



16238263



12563605



6182741



10364416



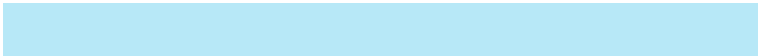
2033408

Inverse Universe

The Inverse Universe completely reimagines the original color for something new.



9811391



12052727



9806015



5594206



30878



5919

Previews

White Background



This preview shows how the Decimal color 12558229 looks on a white background.

Color Contrast Check

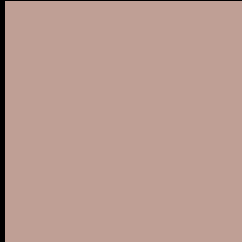
Large Text (above 18pt) WCAG AA × Fail

Any Text WCAG AA × Fail

Large Text (above 18pt) WCAG AAA × Fail

Any Text WCAG AAA × Fail

Black Background



This preview shows how the Decimal color 12558229 looks on a black background.

Color Contrast Check

Large Text (above 18pt) WCAG AA ✓ Pass

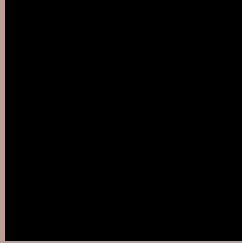
Any Text WCAG AA ✓ Pass

Large Text (above 18pt) WCAG AAA ✓ Pass

Any Text WCAG AAA ✓ Pass

If you want to check with other color combinations, try the [Color Contrast Checker](#).

Decimal 12558229 Background



This preview shows how black text looks on a background with the Decimal color 12558229.




This preview shows how white text looks on a background with the Decimal color 12558229.

Color Blindness Simulation

Color vision deficiency is a very complex topic, and I could not describe the different causes any better than Wikipedia does, so if you want to learn more, you should check out their [article about color blindness](#).

Dichromacy





Tritanopia
12688552

Trichromacy



Original Color
12558229

Protanomaly
11772823

Deuteranomaly
12427413

Tritanomaly
12623265

Monochromacy



Original Color
12558229

Achromatopsia
10987431

Achromatomaly
11576480

CSS Examples

Text

The CSS property to change the color of the text to Decimal 12558229 is called "color". The color property can be set on classes, ids or directly on the HTML element.

This example shows how text in the color #BF9F95 looks like.

```
.text, #text, p{  
    color:#BF9F95  
}
```

If you want to add a text shadow in that color use the text-shadow property, you can generate a text shadow directly with our [CSS Text Shadow Generator](#).

Here you see how black text with a 4 pixel #BF9F95 colored shadow looks like.

```
.shadow{ text-shadow: 4px 4px 2px #BF9F95
}
```

Border

The CSS property to change the border of an element to Decimal 12558229 is called "border". The border property can be set on classes, ids or directly on the HTML element.

This example shows the color as border, it can be applied via the CSS property "border" or "border-color".

```
.border, #border, table{ border:4px solid
#BF9F95 }
```

If only the border color should be changed use the property `border-color`.

```
.border{ border-color:#BF9F95 }
```

If you want to add a box shadow in that color use:

Here you see how a box with a 4 pixel #BF9F95 colored shadow looks like.

```
.boxshadow{ -moz-box-shadow:4px 4px 4px  
4px #BF9F95; -webkit-box-shadow:4px 4px  
4px 4px #BF9F95; box-shadow:4px 4px 4px  
4px #BF9F95 }
```

Background

The CSS property to change the background color of an element to Decimal 12558229 is called "background". The background property can be set on classes, ids or directly on the HTML element.

```
.background, #background, body{  
background:#BF9F95 }
```

If only the background color should be changed can be used:

```
.background{ background-color:#BF9F95 }
```

This example shows the color as background, it is applied via the CSS property "background".

To optimize and compress your CSS code, you can use our [online CSS compressor and optimizer](#) based on csstidy. If you want to create a linear or radial gradient as background or border, check our [CSS Gradient Generator](#).

Hey! You found this booklet interesting? Support Converting Colors with the new Membership Option!

The pro membership hides all ads, plus gives you double the colors in the color bucket, and more awesome pro features!

[Learn more, Memberships starting at \\$2.50/m!](#)

**Follow me
on Twitter!**

@ConvertingColor