

Converting Colors

Decimal(12559264)

Have a look what the booklet for
Decimal(12559264) contains.

Decimal(12559264)	3
<i>Conversions</i>	4
<i>Details</i>	6
<i>Harmonies</i>	11
<i>Previews</i>	23
<i>Color Blindness Simulation</i>	26
<i>CSS Examples</i>	29

Color

Decimal(12559264)

Conversions

Conversions Part 1

Format	Color
Hex	BFA3A0
RGB	191, 163, 160
RGB Percent	75%, 64%, 63%
CMY	0.2510, 0.3608, 0.3725
CMYK	0.00, 0.15, 0.16, 0.25
HSL	6°, 19%, 69%
HSV	6°, 16%, 75%
XYZ	40.9282, 39.8088, 38.7844
YIQ	171.0300, 17.6510, 5.0030

Conversions

Conversions Part 2

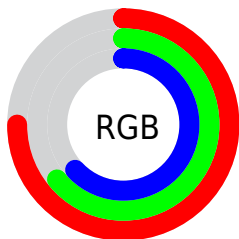
Format	Color
RYB	191, 163, 160
Decimal	12559264
CIELab	69.33, 9.76, 5.35
CIElCh	69, 11.127, 28.752
Yxy	39.8088, 0.3424, 0.3331
Android (android.graphics.Color)	4290749344 (0xFFBFA3A0)
YUV	171.0300, -5.4378, 17.5137
Hunter-Lab	63.0942, 5.3752, 7.7200

Details

The Decimal color **12559264** is a light color, and the websafe version is hex **CC9999**. A complement of this color would be **10534079**, and the grayscale version is **11250603**.

A 20% lighter version of the original color is **16308951**, and **9006957** is the 20% darker color. If you saturate the color by 10%, you get **12554893**, and if you desaturate by 10%, it is **12563635**.

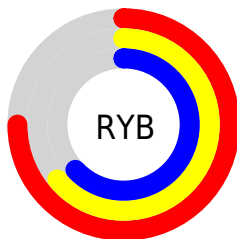
Distribution



Red (75%)

Green (64%)

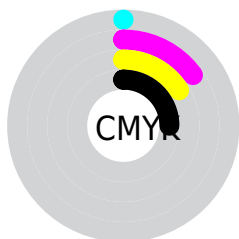
Blue (63%)



Red (75%)

Yellow (64%)

Blue (63%)

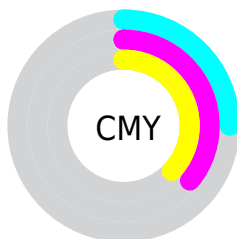


Cyan (0%)

Magenta (15%)

Yellow (16%)

Black (25%)



Cyan (25%)

Magenta (36%)

Yellow (37%)

Brightness & Saturation Gradients

These gradients show how the Decimal color 12559264 changes by changing the brightness by 10 percent. The first figure shows a shift by +10% for each color and the second figure -10%.

Similar to the brightness gradients but the following saturation gradients show a change of the Decimal color 12559264 by changing the saturation by 10% instead.

 12559264

 12559264

16777215

 10783110

 16308951

 9006957


 16774899

 7362388

 5718077

 4139303

 2692371

 1114112

 0

 12559264

 12559264

 12554893

 12563635

 12550266

 12568262

 12545895

 12572633

 12541524

 12577004

 12537153

 12581375

 12532525

 12582911

 12528154

 12523783

 12521984

Harmonies

Analogous

The Analogous color harmony consists of three colors that are next to each other on the color wheel.



12428202



12559264



12297624

Triad

The Triadic color harmony groups three colors that are evenly spaced from another and form a triangle on the color wheel.



12559264



10202783



10398397

Complementary

The Complementary color scheme is a pair of colors which are on the opposite of each other on the color wheel.



12559264



10534079

Split Complementary

Split-complementary colors differ from the complementary color scheme. The scheme consists of three colors, the original color and two neighbors of the complement color.



9743802



12559264



9678760

Square

The Square scheme is like the rectangle color scheme, but the four colors are evenly spaced on the color wheel.



12559264



10988696



9482163



11249595

Rectangle

The Rectangle color scheme consists of four colors that form a rectangle on the color wheel.



12559264



11904918



9482163



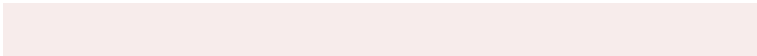
10136509

Sweetspot

The Sweet Spot groups the original color and five complimentary colors.



12559264



16248043



12558524



8222325



16579836



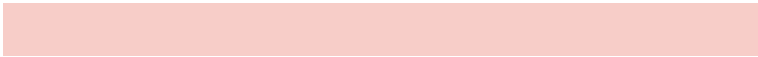
8224125

Same Dimension

The Same Dimension uses a secret algorithm to generate beautiful new colors.



12559264



16240072



12563104



6182485



10358528



2032384

Inverse Universe

The Inverse Universe completely reimagines the original color for something new.



10534079



13169655



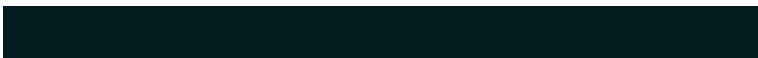
10530239



5594462



36766



7199

Previews

White Background



This preview shows how the Decimal color 12559264 looks on a white background.

Color Contrast Check

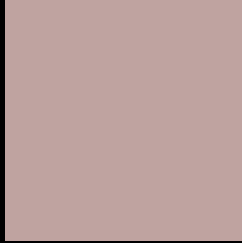
Large Text (above 18pt) WCAG AA × Fail

Any Text WCAG AA × Fail

Large Text (above 18pt) WCAG AAA × Fail

Any Text WCAG AAA × Fail

Black Background



This preview shows how the Decimal color 12559264 looks on a black background.

Color Contrast Check

Large Text (above 18pt) WCAG AA ✓ Pass

Any Text WCAG AA ✓ Pass

Large Text (above 18pt) WCAG AAA ✓ Pass

Any Text WCAG AAA ✓ Pass

If you want to check with other color combinations, try the [Color Contrast Checker](#).

Decimal 12559264 Background



This preview shows how black text looks on a background with the Decimal color 12559264.



This preview shows how white text looks on a background with the Decimal color 12559264.

Color Blindness Simulation

Color vision deficiency is a very complex topic, and I could not describe the different causes any better than Wikipedia does, so if you want to learn more, you should check out their [article about color blindness](#).


Dichromacy



Original Color
12559264

Protanopia
11446691

Deuteranopia
12428448



Tritanopia
12689837

Trichromacy



Original Color
12559264

Protanomaly
11839394

Deuteranomaly
12493984

Tritanomaly
12624552

Monochromacy



Original Color
12559264

Achromatopsia
11250603

Achromatomaly
11708583

CSS Examples

Text

The CSS property to change the color of the text to Decimal 12559264 is called "color". The color property can be set on classes, ids or directly on the HTML element.

This example shows how text in the color #BFA3A0 looks like.

```
.text, #text, p{  
  color:#BFA3A0  
}
```

If you want to add a text shadow in that color use the text-shadow property, you can generate a text shadow directly with our [CSS Text Shadow Generator](#).

Here you see how black text with a 4 pixel #BFA3A0 colored shadow looks like.

```
.shadow{ text-shadow: 4px 4px 2px #BFA3A0  
}
```

Border

The CSS property to change the border of an element to Decimal 12559264 is called "border". The border property can be set on classes, ids or directly on the HTML element.

This example shows the color as border, it can be applied via the CSS property "border" or "border-color".

```
.border, #border, table{ border:4px solid  
#BFA3A0 }
```

If only the border color should be changed use the property `border-color`.

```
.border{ border-color:#BFA3A0 }
```

If you want to add a box shadow in that color use:

Here you see how a box with a 4 pixel #BFA3A0 colored shadow looks like.

```
.boxshadow{ -moz-box-shadow:4px 4px 4px  
4px #BFA3A0; -webkit-box-shadow:4px 4px  
4px 4px #BFA3A0; box-shadow:4px 4px 4px  
4px #BFA3A0 }
```

Background

The CSS property to change the background color of an element to Decimal 12559264 is called "background". The background property can be set on classes, ids or directly on the HTML element.

```
.background, #background, body{  
background:#BFA3A0 }
```

If only the background color should be changed can be used:

```
.background{ background-color:#BFA3A0 }
```

This example shows the color as background, it is applied via the CSS property "background".

To optimize and compress your CSS code, you can use our [online CSS compressor and optimizer](#) based on csstidy. If you want to create a linear or radial gradient as background or border, check our [CSS Gradient Generator](#).

Hey! You found this booklet interesting? Support Converting Colors with the new Membership Option!

The pro membership hides all ads, plus gives you double the colors in the color bucket, and more awesome pro features!

[Learn more, Memberships starting at \\$2.50/m!](#)

**Follow me
on Twitter!**

@ConvertingColor