

Converting Colors

Decimal(12559774)

Have a look what the booklet for
Decimal(12559774) contains.

Decimal(12559774)	3
<i>Conversions</i>	4
<i>Details</i>	6
<i>Harmonies</i>	11
<i>Previews</i>	23
<i>Color Blindness Simulation</i>	26
<i>CSS Examples</i>	29

Color

Decimal(12559774)

Conversions

Conversions Part 1

Format	Color
Hex	BFA59E
RGB	191, 165, 158
RGB Percent	75%, 65%, 62%
CMY	0.2510, 0.3529, 0.3804
CMYK	0.00, 0.14, 0.17, 0.25
HSL	13°, 20%, 68%
HSV	13°, 17%, 75%
XYZ	41.1125, 40.4553, 37.9895
YIQ	171.9760, 17.7430, 3.3350

Conversions

Conversions Part 2

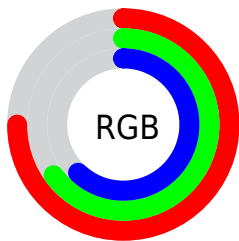
Format	Color
RYB	191, 167, 158
Decimal	12559774
CIELab	69.79, 8.34, 7.12
CIELCh	70, 10.966, 40.483
Yxy	40.4553, 0.3439, 0.3384
Android (android.graphics.Color)	4290749854 (0xFFBFA59E)
YUV	171.9760, -6.8902, 16.6840
Hunter-Lab	63.6044, 4.0708, 9.1105

Details

The Decimal color **12559774** is a light color, and the websafe version is hex **CC9999**. A complement of this color would be **10401983**, and the grayscale version is **11316396**.

A 20% lighter version of the original color is **16309461**, and **9007467** is the 20% darker color. If you saturate the color by 10%, you get **12555915**, and if you desaturate by 10%, it is **12563633**.

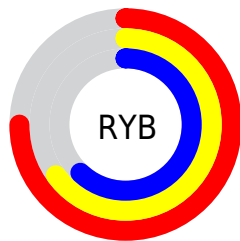
Distribution



Red (75%)

Green (65%)

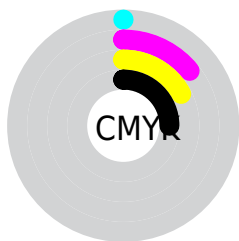
Blue (62%)



Red (75%)

Yellow (65%)

Blue (62%)

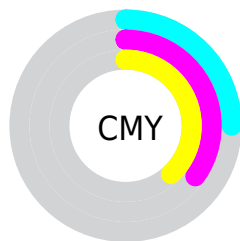


Cyan (0%)

Magenta (14%)

Yellow (17%)

Black (25%)



Cyan (25%)

Magenta (35%)

Yellow (38%)

Brightness & Saturation Gradients

These gradients show how the Decimal color 12559774 changes by changing the brightness by 10 percent. The first figure shows a shift by +10% for each color and the second figure -10%.

Similar to the brightness gradients but the following saturation gradients show a change of the Decimal color 12559774 by changing the saturation by 10% instead.

 12559774

 12559774

16777215

 10783620

 16309461

 9007467

 16775665

 7362899

 5718332

 4139814

 2692881

 1179648

 0

 12559774

 12559774

 12555915

 12563633

 12552056

 12567492

 12548197

 12571351

 12544338

 12575210

 12540479

 12579070

 12536619

 12582911

 12532760

 12528901

 12527872

Harmonies

Analogous

The Analogous color harmony consists of three colors that are next to each other on the color wheel.



12625063



12559774



12167320

Triad

The Triadic color harmony groups three colors that are evenly spaced from another and form a triangle on the color wheel.



12559774



10072228



10791614

Complementary

The Complementary color scheme is a pair of colors which are on the opposite of each other on the color wheel.



12559774



10401983

Split Complementary

Split-complementary colors differ from the complementary color scheme. The scheme consists of three colors, the original color and two neighbors of the complement color.



10071485



12559774



9679278

Square

The Square scheme is like the rectangle color scheme, but the four colors are evenly spaced on the color wheel.



12559774



10792603



9613495



11642810

Rectangle

The Rectangle color scheme consists of four colors that form a rectangle on the color wheel.



12559774



11774615



9613495



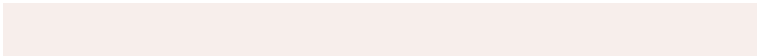
10529726

Sweetspot

The Sweet Spot groups the original color and five complimentary colors.



12559774



16248555



12558008



8222581



16579836



8224125

Same Dimension

The Same Dimension uses a secret algorithm to generate beautiful new colors.



12559774



16240323



12563870



6182741



10363392



2033152

Inverse Universe

The Inverse Universe completely reimagines the original color for something new.



10401983



12840183



10397887



5594206



32158



6175

Previews

White Background



This preview shows how the Decimal color 12559774 looks on a white background.

Color Contrast Check

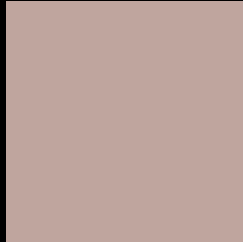
Large Text (above 18pt) WCAG AA × Fail

Any Text WCAG AA × Fail

Large Text (above 18pt) WCAG AAA × Fail

Any Text WCAG AAA × Fail

Black Background



This preview shows how the Decimal color 12559774 looks on a black background.

Color Contrast Check

Large Text (above 18pt) WCAG AA ✓ Pass

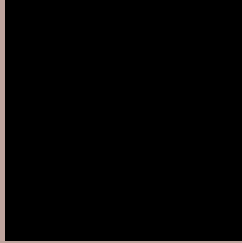
Any Text WCAG AA ✓ Pass

Large Text (above 18pt) WCAG AAA ✓ Pass

Any Text WCAG AAA ✓ Pass

If you want to check with other color combinations, try the [Color Contrast Checker](#).

Decimal 12559774 Background



This preview shows how black text looks on a background with the Decimal color 12559774.



This preview shows how white text looks on a background with the Decimal color 12559774.

Color Blindness Simulation

Color vision deficiency is a very complex topic, and I could not describe the different causes any better than Wikipedia does, so if you want to learn more, you should check out their [article about color blindness](#).


Dichromacy



Original Color
12559774

Protanopia
11578017

Deuteranopia
12625310



Tritanopia
12690095

Trichromacy



Original Color
12559774

Protanomaly
11905184

Deuteranomaly
12625310

Tritanomaly
12624809

Monochromacy



Original Color
12559774

Achromatopsia
11316396

Achromatomaly
11774375

CSS Examples

Text

The CSS property to change the color of the text to Decimal 12559774 is called "color". The color property can be set on classes, ids or directly on the HTML element.

This example shows how text in the color #BFA59E looks like.

```
.text, #text, p{  
    color:#BFA59E  
}
```

If you want to add a text shadow in that color use the text-shadow property, you can generate a text shadow directly with our [CSS Text Shadow Generator](#).

Here you see how black text with a 4 pixel #BFA59E colored shadow looks like.

```
.shadow{ text-shadow: 4px 4px 2px #BFA59E
}
```

Border

The CSS property to change the border of an element to Decimal 12559774 is called "border". The border property can be set on classes, ids or directly on the HTML element.

This example shows the color as border, it can be applied via the CSS property "border" or "border-color".

```
.border, #border, table{ border:4px solid
#BFA59E }
```

If only the border color should be changed use the property `border-color`.

```
.border{ border-color:#BFA59E }
```

If you want to add a box shadow in that color use:

Here you see how a box with a 4 pixel #BFA59E colored shadow looks like.

```
.boxshadow{ -moz-box-shadow:4px 4px 4px  
4px #BFA59E; -webkit-box-shadow:4px 4px  
4px 4px #BFA59E; box-shadow:4px 4px 4px  
4px #BFA59E }
```

Background

The CSS property to change the background color of an element to Decimal 12559774 is called "background". The background property can be set on classes, ids or directly on the HTML element.

```
.background, #background, body{  
background:#BFA59E }
```

If only the background color should be changed can be used:

```
.background{ background-color:#BFA59E }
```

This example shows the color as background, it is applied via the CSS property "background".

To optimize and compress your CSS code, you can use our [online CSS compressor and optimizer](#) based on csstidy. If you want to create a linear or radial gradient as background or border, check our [CSS Gradient Generator](#).

Hey! You found this booklet interesting? Support Converting Colors with the new Membership Option!

The pro membership hides all ads, plus gives you double the colors in the color bucket, and more awesome pro features!

[Learn more, Memberships starting at \\$2.50/m!](#)

**Follow me
on Twitter!**

@ConvertingColor