

Converting Colors

Decimal(12560527)

Have a look what the booklet for
Decimal(12560527) contains.

Decimal(12560527)	3
<i>Conversions</i>	4
<i>Details</i>	6
<i>Harmonies</i>	11
<i>Previews</i>	23
<i>Color Blindness Simulation</i>	26
<i>CSS Examples</i>	29

Color

Decimal(12560527)

Conversions

Conversions Part 1

Format	Color
Hex	BFA88F
RGB	191, 168, 143
RGB Percent	75%, 66%, 56%
CMY	0.2510, 0.3412, 0.4392
CMYK	0.00, 0.12, 0.25, 0.25
HSL	31°, 27%, 65%
HSV	31°, 25%, 75%
XYZ	40.4464, 41.0648, 31.7811
YIQ	172.0270, 21.7330, -2.8990

Conversions

Conversions Part 2

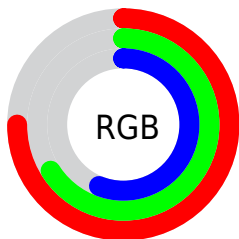
Format	Color
RYB	187, 191, 143
Decimal	12560527
CIELab	70.22, 4.44, 15.99
CIElCh	70, 16.594, 74.482
Yxy	41.0648, 0.3570, 0.3625
Android (android.graphics.Color)	4290750607 (0xFFBFA88F)
YUV	172.0270, -14.3103, 16.6393
Hunter-Lab	64.0818, 0.5204, 15.4526

Details

The Decimal color **12560527** is a light color, and the websafe version is hex **CC9999**. A complement of this color would be **9414335**, and the grayscale version is **11316396**.

A 20% lighter version of the original color is **16310213**, and **9008221** is the 20% darker color. If you saturate the color by 10%, you get **12558204**, and if you desaturate by 10%, it is **12562850**.

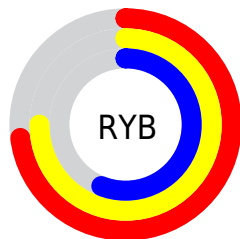
Distribution



Red (75%)

Green (66%)

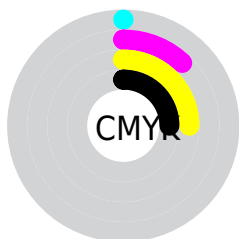
Blue (56%)



Red (73%)

Yellow (75%)

Blue (56%)

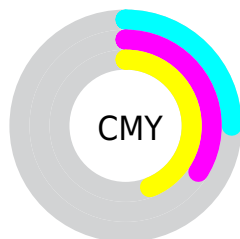


Cyan (0%)

Magenta (12%)

Yellow (25%)

Black (25%)



Cyan (25%)

Magenta (34%)

Yellow (44%)

Brightness & Saturation Gradients

These gradients show how the Decimal color 12560527 changes by changing the brightness by 10 percent. The first figure shows a shift by +10% for each color and the second figure -10%.

Similar to the brightness gradients but the following saturation gradients show a change of the Decimal color 12560527 by changing the saturation by 10% instead.

 12560527

 12560527

16777215

 10784373

 16310213

 9008221

 16776417

 7298117

16777213

 5653550

 4075033

 2627840

 851968

 0

 12560527

 12560527

 12558204

 12562850

 12555881

 12565173

 12553558

 12567496

 12550979

 12570075

 12548655

 12572399

 12546332

 12574719

 12544009

 12577023

 12542720

 12579327

 12581631

Harmonies

Analogous

The Analogous color harmony consists of three colors that are next to each other on the color wheel.



13214871



12560527



11578767

Triad

The Triadic color harmony groups three colors that are evenly spaced from another and form a triangle on the color wheel.



12560527



8762547



12035777

Complementary

The Complementary color scheme is a pair of colors which are on the opposite of each other on the color wheel.



12560527



9414335

Split Complementary

Split-complementary colors differ from the complementary color scheme. The scheme consists of three colors, the original color and two neighbors of the complement color.



10791625



12560527



8827840

Square

The Square scheme is like the rectangle color scheme, but the four colors are evenly spaced on the color wheel.



12560527



9417891



9613256



12952244

Rectangle

The Rectangle color scheme consists of four colors that form a rectangle on the color wheel.



12560527



10793107



9613256



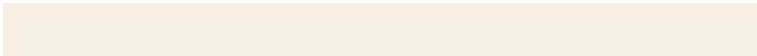
11642820

Sweetspot

The Sweet Spot groups the original color and five complimentary colors.



12560527



16248548



12554150



8222576



16579836



8224125

Same Dimension

The Same Dimension uses a secret algorithm to generate beautiful new colors.



12560527



16241837



12500879



6183509



10375680



2035712

Inverse Universe

The Inverse Universe completely reimagines the original color for something new.



9414335



11391479



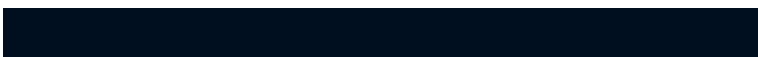
9473983



5593438



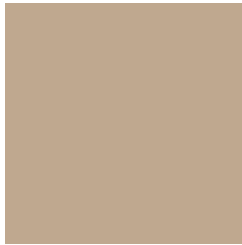
19614



3871

Previews

White Background



This preview shows how the Decimal color 12560527 looks on a white background.

Color Contrast Check

Large Text (above 18pt) WCAG AA × Fail

Any Text WCAG AA × Fail

Large Text (above 18pt) WCAG AAA × Fail

Any Text WCAG AAA × Fail

Black Background



This preview shows how the Decimal color 12560527 looks on a black background.

Color Contrast Check

Large Text (above 18pt) WCAG AA ✓ Pass

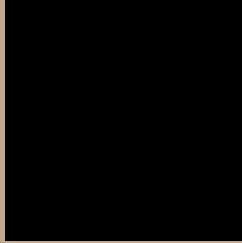
Any Text WCAG AA ✓ Pass

Large Text (above 18pt) WCAG AAA ✓ Pass

Any Text WCAG AAA ✓ Pass

If you want to check with other color combinations, try the [Color Contrast Checker](#).

Decimal 12560527 Background



This preview shows how black text looks on a background with the Decimal color 12560527.



This preview shows how white text looks on a background with the Decimal color 12560527.

Color Blindness Simulation

Color vision deficiency is a very complex topic, and I could not describe the different causes any better than Wikipedia does, so if you want to learn more, you should check out their [article about color blindness](#).

Dichromacy



Original Color
12560527

Protanopia
11905937

Deuteranopia
13018512



Tritanopia
12821424

Trichromacy



Original Color
12560527

Protanomaly
12167824

Deuteranomaly
12822160

Tritanomaly
12756388

Monochromacy



Original Color
12560527

Achromatopsia
11316396

Achromatomaly
11774881

CSS Examples

Text

The CSS property to change the color of the text to Decimal 12560527 is called "color". The color property can be set on classes, ids or directly on the HTML element.

This example shows how text in the color #BFA88F looks like.

```
.text, #text, p{  
    color:#BFA88F  
}
```

If you want to add a text shadow in that color use the text-shadow property, you can generate a text shadow directly with our [CSS Text Shadow Generator](#).

Here you see how black text with a 4 pixel #BFA88F colored shadow looks like.

```
.shadow{ text-shadow: 4px 4px 2px #BFA88F
}
```

Border

The CSS property to change the border of an element to Decimal 12560527 is called "border". The border property can be set on classes, ids or directly on the HTML element.

This example shows the color as border, it can be applied via the CSS property "border" or "border-color".

```
.border, #border, table{ border:4px solid
#BFA88F }
```

If only the border color should be changed use the property `border-color`.

```
.border{ border-color:#BFA88F }
```

If you want to add a box shadow in that color use:

Here you see how a box with a 4 pixel #BFA88F colored shadow looks like.

```
.boxshadow{ -moz-box-shadow:4px 4px 4px  
4px #BFA88F; -webkit-box-shadow:4px 4px  
4px 4px #BFA88F; box-shadow:4px 4px 4px  
4px #BFA88F }
```

Background

The CSS property to change the background color of an element to Decimal 12560527 is called "background". The background property can be set on classes, ids or directly on the HTML element.

```
.background, #background, body{  
background:#BFA88F }
```

If only the background color should be changed can be used:

```
.background{ background-color:#BFA88F }
```

This example shows the color as background, it is applied via the CSS property "background".

To optimize and compress your CSS code, you can use our [online CSS compressor and optimizer](#) based on csstidy. If you want to create a linear or radial gradient as background or border, check our [CSS Gradient Generator](#).

Hey! You found this booklet interesting? Support Converting Colors with the new Membership Option!

The pro membership hides all ads, plus gives you double the colors in the color bucket, and more awesome pro features!

[Learn more, Memberships starting at \\$2.50/m!](#)

**Follow me
on Twitter!**

@ConvertingColor