

# Converting Colors

Decimal(12560533)

Have a look what the booklet for  
Decimal(12560533) contains.

<b>Decimal(12560533)</b> .....	3
<i><b>Conversions</b></i> .....	4
<i><b>Details</b></i> .....	6
<i><b>Harmonies</b></i> .....	11
<i><b>Previews</b></i> .....	23
<i><b>Color Blindness Simulation</b></i> .....	26
<i><b>CSS Examples</b></i> .....	29

# **Color**

**Decimal(12560533)**

# Conversions

## Conversions Part 1

Format	Color
Hex	BFA895
RGB	191, 168, 149
RGB Percent	75%, 66%, 58%
CMY	0.2510, 0.3412, 0.4157
CMYK	0.00, 0.12, 0.22, 0.25
HSL	27°, 25%, 67%
HSV	27°, 22%, 75%
XYZ	40.9133, 41.2516, 34.2398
YIQ	172.7110, 19.8070, -1.0330

# Conversions

## Conversions Part 2

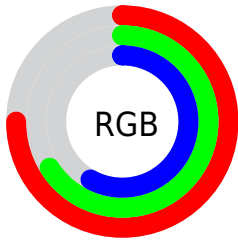
<b>Format</b>	<b>Color</b>
<b>RYB</b>	191, 184, 149
Decimal	12560533
CIELab	70.35, 5.32, 12.88
CIElCh	70, 13.933, 67.559
Yxy	41.2516, 0.3515, 0.3544
Android (android.graphics.Color)	4290750613 (0xFFBFA895)
YUV	172.7110, -11.6895, 16.0395
Hunter-Lab	64.2274, 1.3079, 13.3515

# Details

The Decimal color **12560533** is a light color, and the websafe version is hex **CC9999**. A complement of this color would be **9809087**, and the grayscale version is **11382189**.

A 20% lighter version of the original color is **16310219**, and **9008226** is the 20% darker color. If you saturate the color by 10%, you get **12557954**, and if you desaturate by 10%, it is **12563112**.

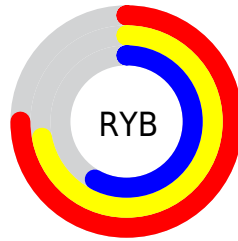
# Distribution



Red (75%)

Green (66%)

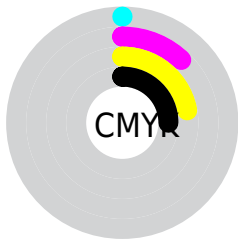
Blue (58%)



Red (75%)

Yellow (72%)

Blue (58%)

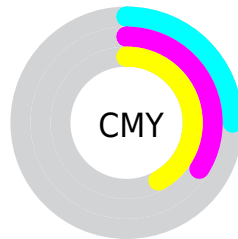


Cyan (0%)

Magenta (12%)

Yellow (22%)

Black (25%)



Cyan (25%)

Magenta (34%)

Yellow (42%)

# Brightness & Saturation Gradients

These gradients show how the Decimal color 12560533 changes by changing the brightness by 10 percent. The first figure shows a shift by +10% for each color and the second figure -10%.

Similar to the brightness gradients but the following saturation gradients show a change of the Decimal color 12560533 by changing the saturation by 10% instead.



 12560533

 12560533

16777215

 10784379

 16310219

 9008226

 16776423

 7297866

 5653556

 4140574

 2627847

 983040

 0

 12560533

 12560533

 12557954

 12563112

 12555119

 12565947

 12552540

 12568526

 12549705

 12571361

 12547126

 12573941

 12544290

 12576767

 12541711

 12579327

 12539392

 12582143

 12582911

# Harmonies

## Analogous

The Analogous color harmony consists of three colors that are next to each other on the color wheel.



13018525



12560533



11775123

# Triad

The Triadic color harmony groups three colors that are evenly spaced from another and form a triangle on the color wheel.



12560533



9286831



11708608

# Complementary

The Complementary color scheme is a pair of colors which are on the opposite of each other on the color wheel.



12560533



9809087

# Split Complementary

Split-complementary colors differ from the complementary color scheme. The scheme consists of three colors, the original color and two neighbors of the complement color.



10661061



12560533



9221051

# Square

The Square scheme is like the rectangle color scheme, but the four colors are evenly spaced on the color wheel.



12560533



9941922



9744579



12625334

# Rectangle

The Rectangle color scheme consists of four colors that form a rectangle on the color wheel.



12560533



11120533



9744579



11381186

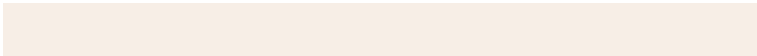


# Sweetspot

The Sweet Spot groups the original color and five complimentary colors.



12560533



16248550



12555692



8222579



16579836



8224125



# Same Dimension

The Same Dimension uses a secret algorithm to generate beautiful new colors.



12560533



16241847



12565909



6183253



10373120



2035200



# Inverse Universe

The Inverse Universe completely reimagines the original color for something new.



9809087



12049143



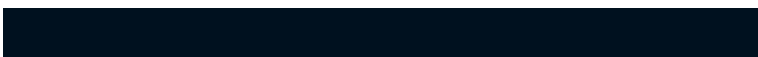
9803711



5593694



22430



4383



# Previews

## White Background



This preview shows how the Decimal color 12560533 looks on a white background.

## Color Contrast Check

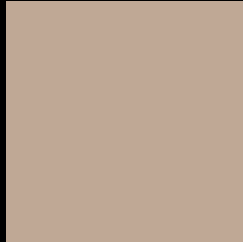
Large Text (above 18pt) WCAG AA × Fail

Any Text WCAG AA × Fail

Large Text (above 18pt) WCAG AAA × Fail

Any Text WCAG AAA × Fail

# Black Background



This preview shows how the Decimal color 12560533 looks on a black background.

## Color Contrast Check

Large Text (above 18pt) WCAG AA ✓ Pass

Any Text WCAG AA ✓ Pass

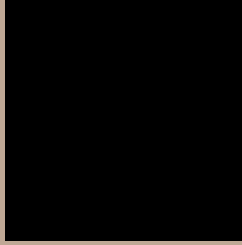
Large Text (above 18pt) WCAG AAA ✓ Pass

Any Text WCAG AAA ✓ Pass

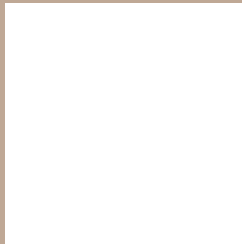
If you want to check with other color combinations, try the [Color Contrast Checker](#).



## Decimal 12560533 Background



This preview shows how black text looks on a background with the Decimal color 12560533.



This preview shows how white text looks on a background with the Decimal color 12560533.

# Color Blindness Simulation

Color vision deficiency is a very complex topic, and I could not describe the different causes any better than Wikipedia does, so if you want to learn more, you should check out their [article about color blindness](#).

## Dichromacy



**Original Color**  
12560533

**Protanopia**  
11840663

**Deuteranopia**  
12953237



**Tritanopia**  
12756145

# Trichromacy



**Original Color**  
12560533

**Protanomaly**  
12102550

**Deuteranomaly**  
12822421

**Tritanomaly**  
12690855

# Monochromacy



**Original Color**  
12560533

**Achromatopsia**  
11382189

**Achromatomaly**  
11840420

# CSS Examples

## Text

The CSS property to change the color of the text to Decimal 12560533 is called "color". The color property can be set on classes, ids or directly on the HTML element.

This example shows how text in the color #BFA895 looks like.

```
.text, #text, p{  
    color:#BFA895  
}
```

If you want to add a text shadow in that color use the text-shadow property, you can generate a text shadow directly with our [CSS Text Shadow Generator](#).

Here you see how black text with a 4 pixel #BFA895 colored shadow looks like.

```
.shadow{ text-shadow: 4px 4px 2px #BFA895
}
```

## Border

The CSS property to change the border of an element to Decimal 12560533 is called "border". The border property can be set on classes, ids or directly on the HTML element.

This example shows the color as border, it can be applied via the CSS property "border" or "border-color".

```
.border, #border, table{ border:4px solid
#BFA895 }
```

If only the border color should be changed use the property `border-color`.

```
.border{ border-color:#BFA895 }
```

If you want to add a box shadow in that color use:

Here you see how a box with a 4 pixel #BFA895 colored shadow looks like.

```
.boxshadow{ -moz-box-shadow:4px 4px 4px  
4px #BFA895; -webkit-box-shadow:4px 4px  
4px 4px #BFA895; box-shadow:4px 4px 4px  
4px #BFA895 }
```

# Background

The CSS property to change the background color of an element to Decimal 12560533 is called "background". The background property can be set on classes, ids or directly on the HTML element.

```
.background, #background, body{  
background:#BFA895 }
```

If only the background color should be changed can be used:

```
.background{ background-color:#BFA895 }
```

This example shows the color as background, it is applied via the CSS property "background".

To optimize and compress your CSS code, you can use our [online CSS compressor and optimizer](#) based on csstidy. If you want to create a linear or radial gradient as background or border, check our [CSS Gradient Generator](#).



Hey! You found this booklet interesting? Support Converting Colors with the new Membership Option!

The pro membership hides all ads, plus gives you double the colors in the color bucket, and more awesome pro features!

**[Learn more, Memberships starting at \\$2.50/m!](#)**

**Follow me  
on Twitter!**

@ConvertingColor