

# Converting Colors

Decimal(12614784)

Have a look what the booklet for  
Decimal(12614784) contains.

<b>Decimal(12614784)</b> .....	3
<i><b>Conversions</b></i> .....	4
<i><b>Details</b></i> .....	6
<i><b>Harmonies</b></i> .....	11
<i><b>Previews</b></i> .....	23
<i><b>Color Blindness Simulation</b></i> .....	26
<i><b>CSS Examples</b></i> .....	29

# **Color**

**Decimal(12614784)**

# Conversions

## Conversions Part 1

<b>Format</b>	<b>Color</b>
Hex	C07C80
RGB	192, 124, 128
RGB Percent	75%, 49%, 50%
CMY	0.2471, 0.5137, 0.4980
CMYK	0.00, 0.35, 0.33, 0.25
HSL	356°, 35%, 62%
HSV	356°, 35%, 75%
XYZ	32.8422, 27.1803, 23.9374
YIQ	144.7880, 39.2440, 15.6600

# Conversions

## Conversions Part 2

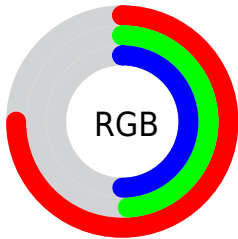
Format	Color
<a href="#">RYB</a>	<a href="#">192, 124, 128</a>
Decimal	<a href="#">12614784</a>
CIELab	<a href="#">59.14, 26.98, 8.85</a>
CIELCh	<a href="#">59, 28.391, 18.153</a>
Yxy	<a href="#">27.1803, 0.3912, 0.3237</a>
Android (android.graphics.Color)	<a href="#">4290804864</a> ( <a href="#">0xFFC07C80</a> )
YUV	<a href="#">144.7880, -8.2765, 41.4049</a>
Hunter-Lab	<a href="#">52.1347, 21.2100, 9.2716</a>

# Details

The Decimal color **12614784** is a light color, and the websafe version is hex **CC9999**. A complement of this color would be **8175804**, and the grayscale version is **9539985**.

A 20% lighter version of the original color is **16429493**, and **8931919** is the 20% darker color. If you saturate the color by 10%, you get **12609902**, and if you desaturate by 10%, it is **12619666**.

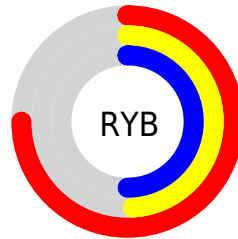
# Distribution



Red (75%)

Green (49%)

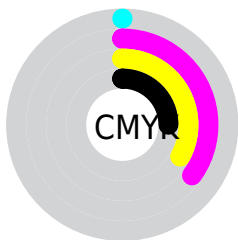
Blue (50%)



Red (75%)

Yellow (49%)

Blue (50%)

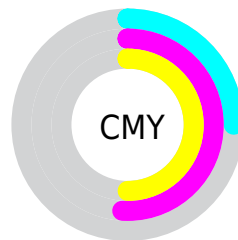


Cyan (0%)

Magenta (35%)

Yellow (33%)

Black (25%)



Cyan (25%)

Magenta (51%)

Yellow (50%)

# Brightness & Saturation Gradients

These gradients show how the Decimal color 12614784 changes by changing the brightness by 10 percent. The first figure shows a shift by +10% for each color and the second figure -10%.

Similar to the brightness gradients but the following saturation gradients show a change of the Decimal color 12614784 by changing the saturation by 10% instead.



 12614784

 12614784

16777215

 10773351

 16429493


 8931919

 16764368

 7221816

 16771565

 5511971

 3867405

 2424833

 0

 12614784

 12614784

 12609902

 12619666

 12605020

 12624548

 12599882

 12629686

 12595000

 12634568

 12590118

 12639450

 12585236

 12644332

 12582923

 12648446

 12648447

# Harmonies

## Analogous

The Analogous color harmony consists of three colors that are next to each other on the color wheel.



12156313



12614784



12222826

# Triad

The Triadic color harmony groups three colors that are evenly spaced from another and form a triangle on the color wheel.



12614784



7641196



6132927

# Complementary

The Complementary color scheme is a pair of colors which are on the opposite of each other on the color wheel.



12614784



8175804

# Split Complementary

Split-complementary colors differ from the complementary color scheme. The scheme consists of three colors, the original color and two neighbors of the complement color.



4102579



12614784



5675907

# Square

The Square scheme is like the rectangle color scheme, but the four colors are evenly spaced on the color wheel.



12614784



9474654



4037789



8686526

# Rectangle

The Rectangle color scheme consists of four colors that form a rectangle on the color wheel.



12614784



11503457



4037789



5347004

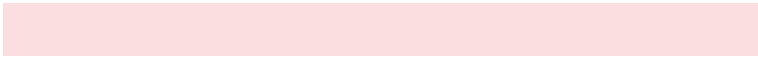


# Sweetspot

The Sweet Spot groups the original color and five complimentary colors.



12614784



16441056



12287168



8220014



16579836



8224125



# Same Dimension

The Same Dimension uses a secret algorithm to generate beautiful new colors.



12614784



16420501



12622204



6379352



10551305



2162690



# Inverse Universe

The Inverse Universe completely reimagines the original color for something new.



12614784



16420501



8168384



6379352



10551305

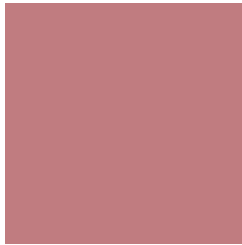


2162690



# Previews

## White Background



This preview shows how the Decimal color 12614784 looks on a white background.

## Color Contrast Check

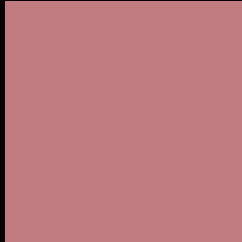
Large Text (above 18pt) WCAG AA ✓ Pass

Any Text WCAG AA ✗ Fail

Large Text (above 18pt) WCAG AAA ✗ Fail

Any Text WCAG AAA ✗ Fail

# Black Background



This preview shows how the Decimal color 12614784 looks on a black background.

## Color Contrast Check

Large Text (above 18pt) WCAG AA ✓ Pass

Any Text WCAG AA ✓ Pass

Large Text (above 18pt) WCAG AAA ✓ Pass

Any Text WCAG AAA × Fail

If you want to check with other color combinations, try the [Color Contrast Checker](#).



## Decimal 12614784 Background



This preview shows how black text looks on a background with the Decimal color 12614784.




This preview shows how white text looks on a background with the Decimal color 12614784.

# Color Blindness Simulation

Color vision deficiency is a very complex topic, and I could not describe the different causes any better than Wikipedia does, so if you want to learn more, you should check out their [article about color blindness](#).

## Dichromacy





**Tritanopia**  
12614533

# Trichromacy



**Original Color**  
12614784

**Protanomaly**  
10717062

**Deuteranomaly**  
11437183

**Tritanomaly**  
12614531

# Monochromacy



**Original Color**  
12614784

**Achromatopsia**  
9539985

**Achromatomaly**  
10652043

# CSS Examples

## Text

The CSS property to change the color of the text to Decimal 12614784 is called "color". The color property can be set on classes, ids or directly on the HTML element.

This example shows how text in the color #C07C80 looks like.

```
.text, #text, p{  
  color:#C07C80  
}
```

If you want to add a text shadow in that color use the text-shadow property, you can generate a text shadow directly with our [CSS Text Shadow Generator](#).

Here you see how black text with a 4 pixel #C07C80 colored shadow looks like.

```
.shadow{ text-shadow: 4px 4px 2px #C07C80
}
```

## Border

The CSS property to change the border of an element to Decimal 12614784 is called "border". The border property can be set on classes, ids or directly on the HTML element.

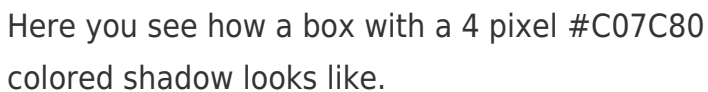
This example shows the color as border, it can be applied via the CSS property "border" or "border-color".

```
.border, #border, table{ border:4px solid
#C07C80 }
```

If only the border color should be changed use the property `border-color`.

```
.border{ border-color:#C07C80 }
```

If you want to add a box shadow in that color use:



Here you see how a box with a 4 pixel `#C07C80` colored shadow looks like.

```
.boxshadow{ -moz-box-shadow:4px 4px 4px  
4px #C07C80; -webkit-box-shadow:4px 4px  
4px 4px #C07C80; box-shadow:4px 4px 4px  
4px #C07C80 }
```

# Background

The CSS property to change the background color of an element to Decimal 12614784 is called "background". The background property can be set on classes, ids or directly on the HTML element.

```
.background, #background, body{  
background:#C07C80 }
```

If only the background color should be changed can be used:

```
.background{ background-color:#C07C80 }
```

This example shows the color as background, it is applied via the CSS property "background".

To optimize and compress your CSS code, you can use our [online CSS compressor and optimizer](#) based on csstidy. If you want to create a linear or radial gradient as background or border, check our [CSS Gradient Generator](#).



Hey! You found this booklet interesting? Support Converting Colors with the new Membership Option!

The pro membership hides all ads, plus gives you double the colors in the color bucket, and more awesome pro features!

**[Learn more, Memberships starting at \\$2.50/m!](#)**

**Follow me  
on Twitter!**

@ConvertingColor