

Converting Colors

Decimal(12620172)

Have a look what the booklet for
Decimal(12620172) contains.

Decimal(12620172)	3
<i>Conversions</i>	4
<i>Details</i>	6
<i>Harmonies</i>	11
<i>Previews</i>	23
<i>Color Blindness Simulation</i>	26
<i>CSS Examples</i>	29

Color

Decimal(12620172)

Conversions

Conversions Part 1

Format	Color
Hex	C0918C
RGB	192, 145, 140
RGB Percent	75%, 57%, 55%
CMY	0.2471, 0.4314, 0.4510
CMYK	0.00, 0.24, 0.27, 0.25
HSL	6°, 29%, 65%
HSV	6°, 27%, 75%
XYZ	36.5973, 33.3507, 29.3194
YIQ	158.4830, 29.6170, 8.4090

Conversions

Conversions Part 2

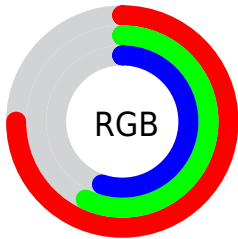
Format	Color
RYB	192, 146, 140
Decimal	12620172
CIELab	64.44, 17.01, 9.55
CIElCh	64, 19.508, 29.298
Yxy	33.3507, 0.3687, 0.3360
Android (android.graphics.Color)	4290810252 (0xFFC0918C)
YUV	158.4830, -9.1121, 29.3944
Hunter-Lab	57.7501, 12.0560, 10.3239

Details

The Decimal color **12620172** is a light color, and the websafe version is hex **CC9999**. A complement of this color would be **9223104**, and the grayscale version is **10461087**.

A 20% lighter version of the original color is **16369602**, and **9002586** is the 20% darker color. If you saturate the color by 10%, you get **12615801**, and if you desaturate by 10%, it is **12624543**.

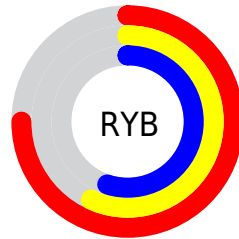
Distribution



Red (75%)

Green (57%)

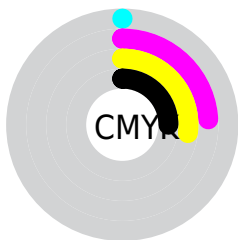
Blue (55%)



Red (75%)

Yellow (57%)

Blue (55%)

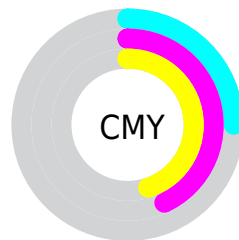


Cyan (0%)

Magenta (24%)

Yellow (27%)

Black (25%)



Cyan (25%)

Magenta (43%)

Yellow (45%)

Brightness & Saturation Gradients

These gradients show how the Decimal color 12620172 changes by changing the brightness by 10 percent. The first figure shows a shift by +10% for each color and the second figure -10%.

Similar to the brightness gradients but the following saturation gradients show a change of the Decimal color 12620172 by changing the saturation by 10% instead.

 12620172

 12620172

16777215

 10778483

 16369602

 9002586

 16770013

 7292483

 16777210

 5648428

 4004376

 2621952

 0

 12620172

 12620172

 12615801

 12624543

 12611174

 12629170

 12606802

 12633542

 12602431

 12637913

 12597804

 12642540

 12593433

 12646911

 12589062

 12648447

 12587520

Harmonies

Analogous

The Analogous color harmony consists of three colors that are next to each other on the color wheel.



12488861



12620172



12162431

Triad

The Triadic color harmony groups three colors that are evenly spaced from another and form a triangle on the color wheel.



12620172



8627338



8887999

Complementary

The Complementary color scheme is a pair of colors which are on the opposite of each other on the color wheel.



12620172



9223104

Split Complementary

Split-complementary colors differ from the complementary color scheme. The scheme consists of three colors, the original color and two neighbors of the complement color.



7644090



12620172



7579291

Square

The Square scheme is like the rectangle color scheme, but the four colors are evenly spaced on the color wheel.



12620172



9937022



7120557



10459323

Rectangle

The Rectangle color scheme consists of four colors that form a rectangle on the color wheel.



12620172



11508090



7120557



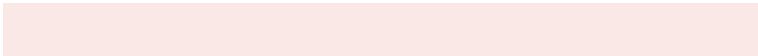
8429758

Sweetspot

The Sweet Spot groups the original color and five complimentary colors.



12620172



16443622



12618940



8221296



16579836



8224125

Same Dimension

The Same Dimension uses a secret algorithm to generate beautiful new colors.



12620172



16428967



12626572



6379607



10555136



2163456

Inverse Universe

The Inverse Universe completely reimagines the original color for something new.



9223104



11006714



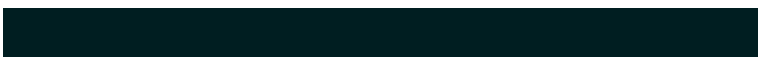
9216704



5726305



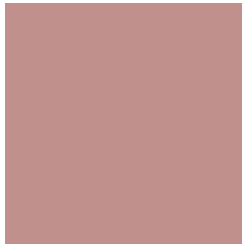
37281



7713

Previews

White Background



This preview shows how the Decimal color 12620172 looks on a white background.

Color Contrast Check

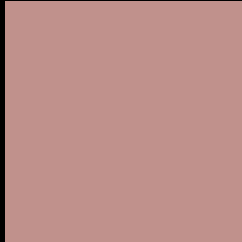
Large Text (above 18pt) WCAG AA × Fail

Any Text WCAG AA × Fail

Large Text (above 18pt) WCAG AAA × Fail

Any Text WCAG AAA × Fail

Black Background



This preview shows how the Decimal color 12620172 looks on a black background.

Color Contrast Check

Large Text (above 18pt) WCAG AA ✓ Pass

Any Text WCAG AA ✓ Pass

Large Text (above 18pt) WCAG AAA ✓ Pass

Any Text WCAG AAA ✓ Pass

If you want to check with other color combinations, try the [Color Contrast Checker](#).

Decimal 12620172 Background



This preview shows how black text looks on a background with the Decimal color 12620172.



This preview shows how white text looks on a background with the Decimal color 12620172.

Color Blindness Simulation

Color vision deficiency is a very complex topic, and I could not describe the different causes any better than Wikipedia does, so if you want to learn more, you should check out their [article about color blindness](#).

Dichromacy



Original Color
12620172

Protanopia
10656914

Deuteranopia
11704203



Tritanopia
12750746

Trichromacy



Original Color
12620172

Protanomaly
11376784

Deuteranomaly
12031371

Tritanomaly
12685461

Monochromacy



Original Color
12620172

Achromatopsia
10395294

Achromatomaly
11180439

CSS Examples

Text

The CSS property to change the color of the text to Decimal 12620172 is called "color". The color property can be set on classes, ids or directly on the HTML element.

This example shows how text in the color #C0918C looks like.

```
.text, #text, p{  
    color:#C0918C  
}
```

If you want to add a text shadow in that color use the text-shadow property, you can generate a text shadow directly with our [CSS Text Shadow Generator](#).

Here you see how black text with a 4 pixel #C0918C colored shadow looks like.

```
.shadow{ text-shadow: 4px 4px 2px #C0918C
}
```

Border

The CSS property to change the border of an element to Decimal 12620172 is called "border". The border property can be set on classes, ids or directly on the HTML element.

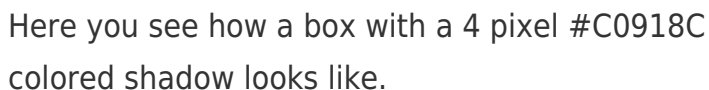
This example shows the color as border, it can be applied via the CSS property "border" or "border-color".

```
.border, #border, table{ border:4px solid
#C0918C }
```

If only the border color should be changed use the property `border-color`.

```
.border{ border-color:#C0918C }
```

If you want to add a box shadow in that color use:



Here you see how a box with a 4 pixel #C0918C colored shadow looks like.

```
.boxshadow{ -moz-box-shadow:4px 4px 4px  
4px #C0918C; -webkit-box-shadow:4px 4px  
4px 4px #C0918C; box-shadow:4px 4px 4px  
4px #C0918C }
```

Background

The CSS property to change the background color of an element to Decimal 12620172 is called "background". The background property can be set on classes, ids or directly on the HTML element.

```
.background, #background, body{  
background:#C0918C }
```

If only the background color should be changed can be used:

```
.background{ background-color:#C0918C }
```

This example shows the color as background, it is applied via the CSS property "background".

To optimize and compress your CSS code, you can use our [online CSS compressor and optimizer](#) based on csstidy. If you want to create a linear or radial gradient as background or border, check our [CSS Gradient Generator](#).

Hey! You found this booklet interesting? Support Converting Colors with the new Membership Option!

The pro membership hides all ads, plus gives you double the colors in the color bucket, and more awesome pro features!

[Learn more, Memberships starting at \\$2.50/m!](#)

**Follow me
on Twitter!**

@ConvertingColor