

# Converting Colors

Decimal(12621435)

Have a look what the booklet for  
Decimal(12621435) contains.

<b>Decimal(12621435)</b> .....	3
<i><b>Conversions</b></i> .....	4
<i><b>Details</b></i> .....	6
<i><b>Harmonies</b></i> .....	11
<i><b>Previews</b></i> .....	23
<i><b>Color Blindness Simulation</b></i> .....	26
<i><b>CSS Examples</b></i> .....	29

# **Color**

**Decimal(12621435)**

# Conversions

## Conversions Part 1

Format	Color
Hex	C0967B
RGB	192, 150, 123
RGB Percent	75%, 59%, 48%
CMY	0.2471, 0.4118, 0.5176
CMYK	0.00, 0.22, 0.36, 0.25
HSL	23°, 35%, 62%
HSV	23°, 36%, 75%
XYZ	36.2197, 34.4492, 23.4793
YIQ	159.4800, 33.6990, 0.5070

# Conversions

## Conversions Part 2

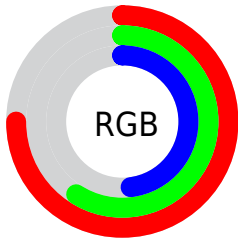
Format	Color
<a href="#">RYB</a>	<a href="#">192, 167, 123</a>
Decimal	<a href="#">12621435</a>
CIELab	<a href="#">65.32, 11.99, 20.27</a>
CIElCh	<a href="#">65, 23.551, 59.392</a>
Yxy	<a href="#">34.4492, 0.3847, 0.3659</a>
Android (android.graphics.Color)	<a href="#">4290811515 (0xFFC0967B)</a>
YUV	<a href="#">159.4800, -17.9846, 28.5200</a>
Hunter-Lab	<a href="#">58.6935, 7.4388, 17.3675</a>

# Details

The Decimal color **12621435** is a light color, and the websafe version is hex **CC9966**. A complement of this color would be **8103360**, and the grayscale version is **10526880**.

A 20% lighter version of the original color is **16436400**, and **9003850** is the 20% darker color. If you saturate the color by 10%, you get **12618344**, and if you desaturate by 10%, it is **12624526**.

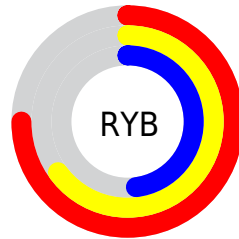
# Distribution



Red (75%)

Green (59%)

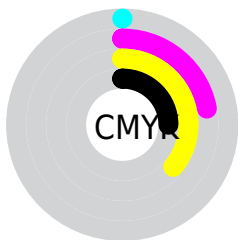
Blue (48%)



Red (75%)

Yellow (65%)

Blue (48%)

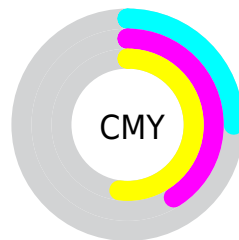


Cyan (0%)

Magenta (22%)

Yellow (36%)

Black (25%)



Cyan (25%)

Magenta (41%)

Yellow (52%)

# Brightness & Saturation Gradients

These gradients show how the Decimal color 12621435 changes by changing the brightness by 10 percent. The first figure shows a shift by +10% for each color and the second figure -10%.

Similar to the brightness gradients but the following saturation gradients show a change of the Decimal color 12621435 by changing the saturation by 10% instead.



 12621435

 12621435

16777215

 10779746

 16436400

 9003850

 16771275

 7293747

 16777191

 5583902

 3940102

 2427136

 0

 12621435

 12621435

 12618344

 12624526

 12615509

 12627361

 12612417

 12630453

 12609326

 12633544

 12606491

 12636379

 12603400

 12639470

 12602112

 12642559

 12645375

 12648447

# Harmonies

## Analogous

The Analogous color harmony consists of three colors that are next to each other on the color wheel.



13209995



12621435



11509109

# Triad

The Triadic color harmony groups three colors that are evenly spaced from another and form a triangle on the color wheel.



12621435



7056029



10590659

# Complementary

The Complementary color scheme is a pair of colors which are on the opposite of each other on the color wheel.



12621435



8103360

# Split Complementary

Split-complementary colors differ from the complementary color scheme. The scheme consists of three colors, the original color and two neighbors of the complement color.



8692168



12621435



6400690

# Square

The Square scheme is like the rectangle color scheme, but the four colors are evenly spaced on the color wheel.



12621435



8431752



7055042



12161972

# Rectangle

The Rectangle color scheme consists of four colors that form a rectangle on the color wheel.



12621435



10527351



7055042



10001606

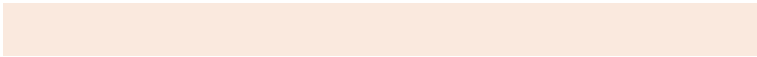


# Sweetspot

The Sweet Spot groups the original color and five complimentary colors.



12621435



16443870



12614566



8221549



16579836



8224125



# Same Dimension

The Same Dimension uses a secret algorithm to generate beautiful new colors.



12621435



16431246



12630139



6380375



10567424



2166016



# Inverse Universe

The Inverse Universe completely reimagines the original color for something new.



8103360



9359610



8094656



5725537



25249



5153



# Previews

## White Background



This preview shows how the Decimal color 12621435 looks on a white background.

## Color Contrast Check

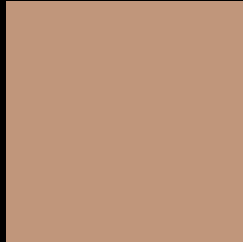
Large Text (above 18pt) WCAG AA × Fail

Any Text WCAG AA × Fail

Large Text (above 18pt) WCAG AAA × Fail

Any Text WCAG AAA × Fail

# Black Background



This preview shows how the Decimal color 12621435 looks on a black background.

## Color Contrast Check

Large Text (above 18pt) WCAG AA ✓ Pass

Any Text WCAG AA ✓ Pass

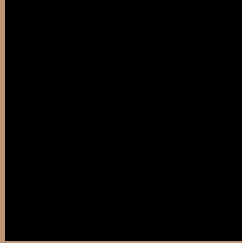
Large Text (above 18pt) WCAG AAA ✓ Pass

Any Text WCAG AAA ✓ Pass

If you want to check with other color combinations, try the [Color Contrast Checker](#).



## Decimal 12621435 Background



This preview shows how black text looks on a background with the Decimal color 12621435.



This preview shows how white text looks on a background with the Decimal color 12621435.

# Color Blindness Simulation

Color vision deficiency is a very complex topic, and I could not describe the different causes any better than Wikipedia does, so if you want to learn more, you should check out their [article about color blindness](#).

## Dichromacy





**Tritanopia**  
12816797

# Trichromacy



**Original Color**  
12621435

**Protanomaly**  
11639934

**Deuteranomaly**  
12359547

**Tritanomaly**  
12751761

# Monochromacy



**Original Color**  
12621435

**Achromatopsia**  
10461087

**Achromatomaly**  
11246738

# CSS Examples

## Text

The CSS property to change the color of the text to Decimal 12621435 is called "color". The color property can be set on classes, ids or directly on the HTML element.

This example shows how text in the color #C0967B looks like.

```
.text, #text, p{  
    color:#C0967B  
}
```

If you want to add a text shadow in that color use the text-shadow property, you can generate a text shadow directly with our [CSS Text Shadow Generator](#).

Here you see how black text with a 4 pixel #C0967B colored shadow looks like.

```
.shadow{ text-shadow: 4px 4px 2px #C0967B
}
```

## Border

The CSS property to change the border of an element to Decimal 12621435 is called "border". The border property can be set on classes, ids or directly on the HTML element.

This example shows the color as border, it can be applied via the CSS property "border" or "border-color".

```
.border, #border, table{ border:4px solid
#C0967B }
```

If only the border color should be changed use the property `border-color`.

```
.border{ border-color:#C0967B }
```

If you want to add a box shadow in that color use:

Here you see how a box with a 4 pixel #C0967B colored shadow looks like.

```
.boxshadow{ -moz-box-shadow:4px 4px 4px  
4px #C0967B; -webkit-box-shadow:4px 4px  
4px 4px #C0967B; box-shadow:4px 4px 4px  
4px #C0967B }
```

# Background

The CSS property to change the background color of an element to Decimal 12621435 is called "background". The background property can be set on classes, ids or directly on the HTML element.

```
.background, #background, body{  
background:#C0967B }
```

If only the background color should be changed can be used:

```
.background{ background-color:#C0967B }
```

This example shows the color as background, it is applied via the CSS property "background".

To optimize and compress your CSS code, you can use our [online CSS compressor and optimizer](#) based on csstidy. If you want to create a linear or radial gradient as background or border, check our [CSS Gradient Generator](#).



Hey! You found this booklet interesting? Support Converting Colors with the new Membership Option!

The pro membership hides all ads, plus gives you double the colors in the color bucket, and more awesome pro features!

**[Learn more, Memberships starting at \\$2.50/m!](#)**

**Follow me  
on Twitter!**

@ConvertingColor