

# Converting Colors

Decimal(12621468)

Have a look what the booklet for  
Decimal(12621468) contains.

<b>Decimal(12621468)</b> .....	3
<i><b>Conversions</b></i> .....	4
<i><b>Details</b></i> .....	6
<i><b>Harmonies</b></i> .....	11
<i><b>Previews</b></i> .....	23
<i><b>Color Blindness Simulation</b></i> .....	26
<i><b>CSS Examples</b></i> .....	29

# **Color**

**Decimal(12621468)**

# Conversions

## Conversions Part 1

Format	Color
Hex	C0969C
RGB	192, 150, 156
RGB Percent	75%, 59%, 61%
CMY	0.2471, 0.4118, 0.3882
CMYK	0.00, 0.22, 0.19, 0.25
HSL	351°, 25%, 67%
HSV	351°, 22%, 75%
XYZ	38.6453, 35.4195, 36.2523
YIQ	163.2420, 23.1060, 10.7700

# Conversions

## Conversions Part 2

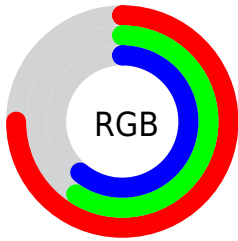
<b>Format</b>	<b>Color</b>
<a href="#">RYB</a>	<a href="#">192, 150, 156</a>
Decimal	<a href="#">12621468</a>
CIELab	<a href="#">66.07, 16.65, 2.89</a>
CIElCh	<a href="#">66, 16.897, 9.841</a>
Yxy	<a href="#">35.4195, 0.3503, 0.3211</a>
Android (android.graphics.Color)	<a href="#">4290811548</a> (0xFFC0969C)
YUV	<a href="#">163.2420, -3.5703, 25.2208</a>
Hunter-Lab	<a href="#">59.5143, 11.7583, 5.5443</a>

# Details

The Decimal color **12621468** is a light color, and the websafe version is hex **CC9999**. A complement of this color would be **9879738**, and the grayscale version is **10724259**.

A 20% lighter version of the original color is **16370898**, and **9069417** is the 20% darker color. If you saturate the color by 10%, you get **12616588**, and if you desaturate by 10%, it is **12626348**.

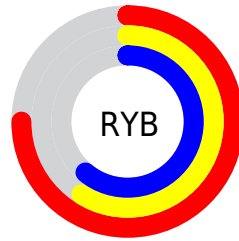
# Distribution



Red (75%)

Green (59%)

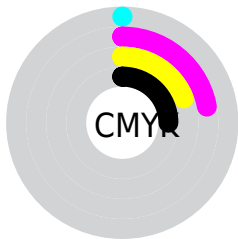
Blue (61%)



Red (75%)

Yellow (59%)

Blue (61%)

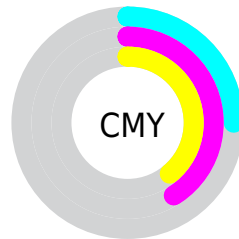


Cyan (0%)

Magenta (22%)

Yellow (19%)

Black (25%)



Cyan (25%)

Magenta (41%)

Yellow (39%)

# Brightness & Saturation Gradients

These gradients show how the Decimal color 12621468 changes by changing the brightness by 10 percent. The first figure shows a shift by +10% for each color and the second figure -10%.

Similar to the brightness gradients but the following saturation gradients show a change of the Decimal color 12621468 by changing the saturation by 10% instead.



 12621468

 12621468

16777215

 10845314

 16370898

 9069417

 16771567

 7359313

 5715002

 4136484

 2623503

 0

 12621468

 12621468

 12616588

 12626348

 12611707

 12631229

 12606571

 12636365

 12601690

 12641246

 12596810

 12646126

 12591929

 12648447

 12587049

 12582939

# Harmonies

## Analogous

The Analogous color harmony consists of three colors that are next to each other on the color wheel.



12162987



12621468



12556430

# Triad

The Triadic color harmony groups three colors that are evenly spaced from another and form a triangle on the color wheel.



12621468



9873033



8693181

# Complementary

The Complementary color scheme is a pair of colors which are on the opposite of each other on the color wheel.



12621468



9879738

# Split Complementary

Split-complementary colors differ from the complementary color scheme. The scheme consists of three colors, the original color and two neighbors of the complement color.



7973043



12621468



8825238

# Square

The Square scheme is like the rectangle color scheme, but the four colors are evenly spaced on the color wheel.



12621468



10985859



8038821



9871550

# Rectangle

The Rectangle color scheme consists of four colors that form a rectangle on the color wheel.



12621468



12229511



8038821



8365754

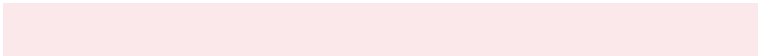


# Sweetspot

The Sweet Spot groups the original color and five complimentary colors.



12621468



16443627



12228288



8221556



16579836



8224125



# Same Dimension

The Same Dimension uses a secret algorithm to generate beautiful new colors.



12621468



16431554



12625302



6379353



10551319



2162693



# Inverse Universe

The Inverse Universe completely reimagines the original color for something new.



12621468



16431554



9875904



6379353



10551319

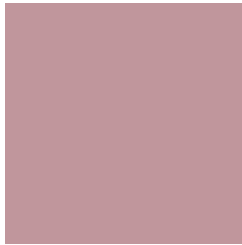


2162693



# Previews

## White Background



This preview shows how the Decimal color 12621468 looks on a white background.

## Color Contrast Check

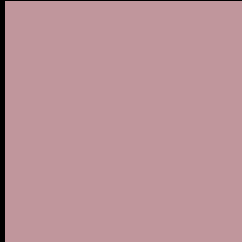
Large Text (above 18pt) WCAG AA × Fail

Any Text WCAG AA × Fail

Large Text (above 18pt) WCAG AAA × Fail

Any Text WCAG AAA × Fail

# Black Background



This preview shows how the Decimal color 12621468 looks on a black background.

## Color Contrast Check

Large Text (above 18pt) WCAG AA ✓ Pass

Any Text WCAG AA ✓ Pass

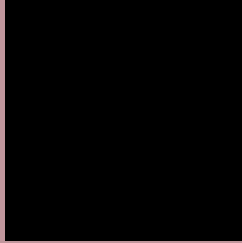
Large Text (above 18pt) WCAG AAA ✓ Pass

Any Text WCAG AAA ✓ Pass

If you want to check with other color combinations, try the [Color Contrast Checker](#).



## Decimal 12621468 Background



This preview shows how black text looks on a background with the Decimal color 12621468.




This preview shows how white text looks on a background with the Decimal color 12621468.

# Color Blindness Simulation

Color vision deficiency is a very complex topic, and I could not describe the different causes any better than Wikipedia does, so if you want to learn more, you should check out their [article about color blindness](#).

## Dichromacy





**Tritanopia**  
12686753

# Trichromacy



**Original Color**  
12621468

**Protanomaly**  
11443360

**Deuteranomaly**  
12097947

**Tritanomaly**  
12686751

# Monochromacy



**Original Color**  
12621468

**Achromatopsia**  
10724259

**Achromatomaly**  
11443872

# CSS Examples

## Text

The CSS property to change the color of the text to Decimal 12621468 is called "color". The color property can be set on classes, ids or directly on the HTML element.

This example shows how text in the color #C0969C looks like.

```
.text, #text, p{  
    color:#C0969C  
}
```

If you want to add a text shadow in that color use the text-shadow property, you can generate a text shadow directly with our [CSS Text Shadow Generator](#).

Here you see how black text with a 4 pixel #C0969C colored shadow looks like.

```
.shadow{ text-shadow: 4px 4px 2px #C0969C
}
```

## Border

The CSS property to change the border of an element to Decimal 12621468 is called "border". The border property can be set on classes, ids or directly on the HTML element.

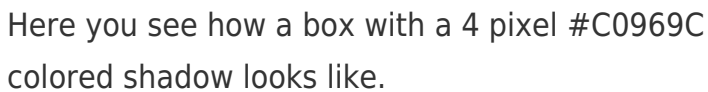
This example shows the color as border, it can be applied via the CSS property "border" or "border-color".

```
.border, #border, table{ border:4px solid
#C0969C }
```

If only the border color should be changed use the property `border-color`.

```
.border{ border-color:#C0969C }
```

If you want to add a box shadow in that color use:



Here you see how a box with a 4 pixel #C0969C colored shadow looks like.

```
.boxshadow{ -moz-box-shadow:4px 4px 4px  
4px #C0969C; -webkit-box-shadow:4px 4px  
4px 4px #C0969C; box-shadow:4px 4px 4px  
4px #C0969C }
```

# Background

The CSS property to change the background color of an element to Decimal 12621468 is called "background". The background property can be set on classes, ids or directly on the HTML element.

```
.background, #background, body{  
background:#C0969C }
```

If only the background color should be changed can be used:

```
.background{ background-color:#C0969C }
```

This example shows the color as background, it is applied via the CSS property "background".

To optimize and compress your CSS code, you can use our [online CSS compressor and optimizer](#) based on csstidy. If you want to create a linear or radial gradient as background or border, check our [CSS Gradient Generator](#).



Hey! You found this booklet interesting? Support Converting Colors with the new Membership Option!

The pro membership hides all ads, plus gives you double the colors in the color bucket, and more awesome pro features!

**[Learn more, Memberships starting at \\$2.50/m!](#)**

**Follow me  
on Twitter!**

@ConvertingColor