

# Converting Colors

Decimal(12621688)

Have a look what the booklet for  
Decimal(12621688) contains.

<b>Decimal(12621688)</b> .....	3
<i><b>Conversions</b></i> .....	4
<i><b>Details</b></i> .....	6
<i><b>Harmonies</b></i> .....	11
<i><b>Previews</b></i> .....	23
<i><b>Color Blindness Simulation</b></i> .....	26
<i><b>CSS Examples</b></i> .....	29

# **Color**

**Decimal(12621688)**

# Conversions

## Conversions Part 1

Format	Color
Hex	C09778
RGB	192, 151, 120
RGB Percent	75%, 59%, 47%
CMY	0.2471, 0.4078, 0.5294
CMYK	0.00, 0.21, 0.38, 0.25
HSL	26°, 36%, 61%
HSV	26°, 38%, 75%
XYZ	36.1950, 34.6958, 22.5586
YIQ	159.7250, 34.3870, -0.9490

# Conversions

## Conversions Part 2

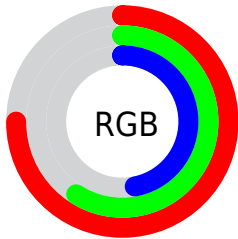
<b>Format</b>	<b>Color</b>
<b>RYB</b>	192, 174, 120
Decimal	12621688
CIELab	65.51, 11.07, 22.19
CIELCh	66, 24.802, 63.479
Yxy	34.6958, 0.3873, 0.3713
Android (android.graphics.Color)	4290811768 (0xFFC09778)
YUV	159.7250, -19.5844, 28.3052
Hunter-Lab	58.9031, 6.6049, 18.5254

# Details

The Decimal color **12621688** is a light color, and the websafe version is hex **CC9966**. A complement of this color would be **7905728**, and the grayscale version is **10526880**.

A 20% lighter version of the original color is **16436652**, and **9004103** is the 20% darker color. If you saturate the color by 10%, you get **12618853**, and if you desaturate by 10%, it is **12624523**.

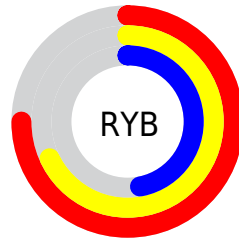
# Distribution



Red (75%)

Green (59%)

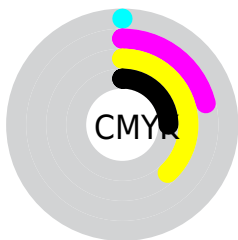
Blue (47%)



Red (75%)

Yellow (68%)

Blue (47%)

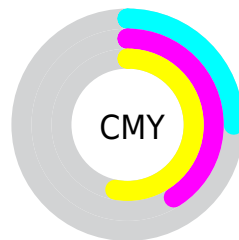


Cyan (0%)

Magenta (21%)

Yellow (38%)

Black (25%)



Cyan (25%)

Magenta (41%)

Yellow (53%)

# Brightness & Saturation Gradients

These gradients show how the Decimal color 12621688 changes by changing the brightness by 10 percent. The first figure shows a shift by +10% for each color and the second figure -10%.

Similar to the brightness gradients but the following saturation gradients show a change of the Decimal color 12621688 by changing the saturation by 10% instead.



 12621688

 12621688

16777215

 10779999

 16436652

 9004103

 16771528

 7294000

 16777188

 5584155

 3940354

 2427648

 0

 12621688

 12621688

 12618853

 12624523

 12616018

 12627358

 12613182

 12630194

 12610347

 12633029

 12607512

 12635864

 12604677

 12638699

 12604160

 12641534

 12644095

 12646911

# Harmonies

## Analogous

The Analogous color harmony consists of three colors that are next to each other on the color wheel.



13341064



12621688



11378291

# Triad

The Triadic color harmony groups three colors that are evenly spaced from another and form a triangle on the color wheel.



12621688



6663329



10918084

# Complementary

The Complementary color scheme is a pair of colors which are on the opposite of each other on the color wheel.



12621688



7905728

# Split Complementary

Split-complementary colors differ from the complementary color scheme. The scheme consists of three colors, the original color and two neighbors of the complement color.



8888523



12621688



6138807

# Square

The Square scheme is like the rectangle color scheme, but the four colors are evenly spaced on the color wheel.



12621688



8104587



6989766



12489395

# Rectangle

The Rectangle color scheme consists of four colors that form a rectangle on the color wheel.



12621688



10330998



6989766



10263496

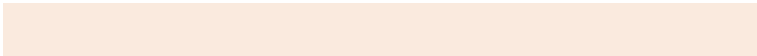


# Sweetspot

The Sweet Spot groups the original color and five complimentary colors.



12621688



16444126



12613794



8221805



16579836



8224125



# Same Dimension

The Same Dimension uses a secret algorithm to generate beautiful new colors.



12621688



16431753



12630648



6380375



10568960



2166272

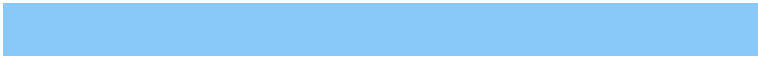


# Inverse Universe

The Inverse Universe completely reimagines the original color for something new.



7905728



9030138



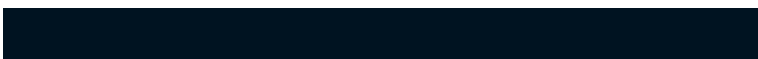
7896768



5725537



23457



4897



# Previews

## White Background



This preview shows how the Decimal color 12621688 looks on a white background.

## Color Contrast Check

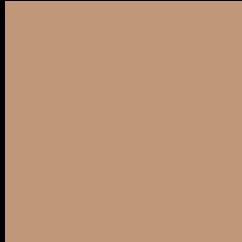
Large Text (above 18pt) WCAG AA × Fail

Any Text WCAG AA × Fail

Large Text (above 18pt) WCAG AAA × Fail

Any Text WCAG AAA × Fail

# Black Background



This preview shows how the Decimal color 12621688 looks on a black background.

## Color Contrast Check

Large Text (above 18pt) WCAG AA ✓ Pass

Any Text WCAG AA ✓ Pass

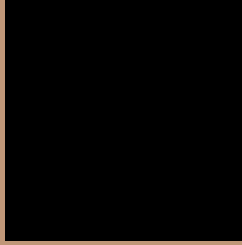
Large Text (above 18pt) WCAG AAA ✓ Pass

Any Text WCAG AAA ✓ Pass

If you want to check with other color combinations, try the [Color Contrast Checker](#).



## Decimal 12621688 Background



This preview shows how black text looks on a background with the Decimal color 12621688.



This preview shows how white text looks on a background with the Decimal color 12621688.

# Color Blindness Simulation

Color vision deficiency is a very complex topic, and I could not describe the different causes any better than Wikipedia does, so if you want to learn more, you should check out their [article about color blindness](#).


## Dichromacy



**Original Color**  
12621688

**Protanopia**  
11181948

**Deuteranopia**  
12360056



**Tritanopia**  
12882589

# Trichromacy



**Original Color**  
12621688

**Protanomaly**  
11705467

**Deuteranomaly**  
12425336

**Tritanomaly**  
12817552

# Monochromacy



**Original Color**  
12621688

**Achromatopsia**  
10526880

**Achromatomaly**  
11312529

# CSS Examples

## Text

The CSS property to change the color of the text to Decimal 12621688 is called "color". The color property can be set on classes, ids or directly on the HTML element.

This example shows how text in the color #C09778 looks like.

```
.text, #text, p{  
    color:#C09778  
}
```

If you want to add a text shadow in that color use the text-shadow property, you can generate a text shadow directly with our [CSS Text Shadow Generator](#).

Here you see how black text with a 4 pixel #C09778 colored shadow looks like.

```
.shadow{ text-shadow: 4px 4px 2px #C09778  
}
```

## Border

The CSS property to change the border of an element to Decimal 12621688 is called "border". The border property can be set on classes, ids or directly on the HTML element.

This example shows the color as border, it can be applied via the CSS property "border" or "border-color".

```
.border, #border, table{ border:4px solid  
#C09778 }
```

If only the border color should be changed use the property `border-color`.

```
.border{ border-color:#C09778 }
```

If you want to add a box shadow in that color use:

Here you see how a box with a 4 pixel #C09778 colored shadow looks like.

```
.boxshadow{ -moz-box-shadow:4px 4px 4px  
4px #C09778; -webkit-box-shadow:4px 4px  
4px 4px #C09778; box-shadow:4px 4px 4px  
4px #C09778 }
```

# Background

The CSS property to change the background color of an element to Decimal 12621688 is called "background". The background property can be set on classes, ids or directly on the HTML element.

```
.background, #background, body{  
background:#C09778 }
```

If only the background color should be changed can be used:

```
.background{ background-color:#C09778 }
```

This example shows the color as background, it is applied via the CSS property "background".

To optimize and compress your CSS code, you can use our [online CSS compressor and optimizer](#) based on csstidy. If you want to create a linear or radial gradient as background or border, check our [CSS Gradient Generator](#).



Hey! You found this booklet interesting? Support Converting Colors with the new Membership Option!

The pro membership hides all ads, plus gives you double the colors in the color bucket, and more awesome pro features!

**[Learn more, Memberships starting at \\$2.50/m!](#)**

**Follow me  
on Twitter!**

@ConvertingColor