

Converting Colors

Decimal(12621717)

Have a look what the booklet for
Decimal(12621717) contains.

Decimal(12621717)	3
<i>Conversions</i>	4
<i>Details</i>	6
<i>Harmonies</i>	11
<i>Previews</i>	23
<i>Color Blindness Simulation</i>	26
<i>CSS Examples</i>	29

Color

Decimal(12621717)

Conversions

Conversions Part 1

Format	Color
Hex	C09795
RGB	192, 151, 149
RGB Percent	75%, 59%, 58%
CMY	0.2471, 0.4078, 0.4157
CMYK	0.00, 0.21, 0.22, 0.25
HSL	3°, 25%, 67%
HSV	3°, 22%, 75%
XYZ	38.2297, 35.5096, 33.2729
YIQ	163.0310, 25.0780, 8.0700

Conversions

Conversions Part 2

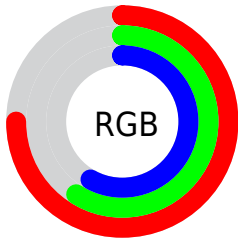
Format	Color
RYB	192, 151, 149
Decimal	12621717
CIELab	66.14, 15.02, 6.91
CIElCh	66, 16.532, 24.725
Yxy	35.5096, 0.3572, 0.3318
Android (android.graphics.Color)	4290811797 (0xFFC09795)
YUV	163.0310, -6.9173, 25.4058
Hunter-Lab	59.5899, 10.2335, 8.6075

Details

The Decimal color **12621717** is a light color, and the websafe version is hex **CC9999**. A complement of this color would be **9813696**, and the grayscale version is **10724259**.

A 20% lighter version of the original color is **16371147**, and **9069666** is the 20% darker color. If you saturate the color by 10%, you get **12617090**, and if you desaturate by 10%, it is **12626344**.

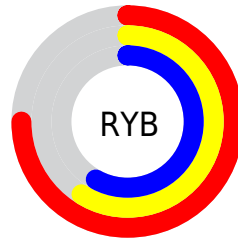
Distribution



Red (75%)

Green (59%)

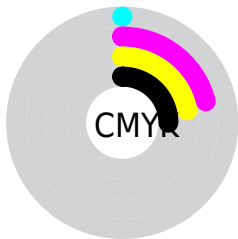
Blue (58%)



Red (75%)

Yellow (59%)

Blue (58%)

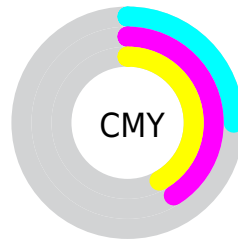


Cyan (0%)

Magenta (21%)

Yellow (22%)

Black (25%)



Cyan (25%)

Magenta (41%)

Yellow (42%)

Brightness & Saturation Gradients

These gradients show how the Decimal color 12621717 changes by changing the brightness by 10 percent. The first figure shows a shift by +10% for each color and the second figure -10%.

Similar to the brightness gradients but the following saturation gradients show a change of the Decimal color 12621717 by changing the saturation by 10% instead.

 12621717

 12621717

16777215

 10845563

 16371147

 9069666

 16771815

 7359563

 5715252

 4071199

 2624006

 0

 12621717

 12621717

 12617090

 12626344

 12612207

 12631227

 12607579

 12635855

 12602952

 12640482

 12598069

 12645365

 12593442

 12648447

 12588815

 12585216

Harmonies

Analogous

The Analogous color harmony consists of three colors that are next to each other on the color wheel.



12425124



12621717



12294793

Triad

The Triadic color harmony groups three colors that are evenly spaced from another and form a triangle on the color wheel.



12621717



9349007



9282494

Complementary

The Complementary color scheme is a pair of colors which are on the opposite of each other on the color wheel.



12621717



9813696

Split Complementary

Split-complementary colors differ from the complementary color scheme. The scheme consists of three colors, the original color and two neighbors of the complement color.



8300472



12621717



8432029

Square

The Square scheme is like the rectangle color scheme, but the four colors are evenly spaced on the color wheel.



12621717



10462342



7973293



10526396

Rectangle

The Rectangle color scheme consists of four colors that form a rectangle on the color wheel.



12621717



11836805



7973293



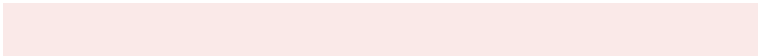
8889533

Sweetspot

The Sweet Spot groups the original color and five complimentary colors.



12621717



16443880



12621247



8221555



16579836



8224125

Same Dimension

The Same Dimension uses a secret algorithm to generate beautiful new colors.



12621717



16431798



12627093



6379607



10553088



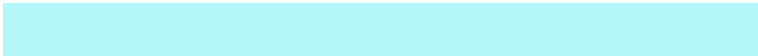
2163200

Inverse Universe

The Inverse Universe completely reimagines the original color for something new.



9813696



11991034



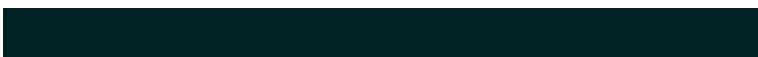
9808320



5726305



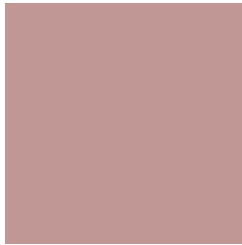
39329



8225

Previews

White Background



This preview shows how the Decimal color 12621717 looks on a white background.

Color Contrast Check

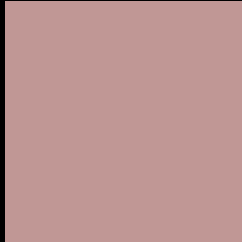
Large Text (above 18pt) WCAG AA × Fail

Any Text WCAG AA × Fail

Large Text (above 18pt) WCAG AAA × Fail

Any Text WCAG AAA × Fail

Black Background



This preview shows how the Decimal color 12621717 looks on a black background.

Color Contrast Check

Large Text (above 18pt) WCAG AA ✓ Pass

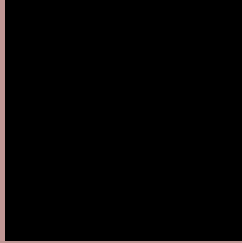
Any Text WCAG AA ✓ Pass

Large Text (above 18pt) WCAG AAA ✓ Pass

Any Text WCAG AAA ✓ Pass

If you want to check with other color combinations, try the [Color Contrast Checker](#).

Decimal 12621717 Background



This preview shows how black text looks on a background with the Decimal color 12621717.



This preview shows how white text looks on a background with the Decimal color 12621717.

Color Blindness Simulation

Color vision deficiency is a very complex topic, and I could not describe the different causes any better than Wikipedia does, so if you want to learn more, you should check out their [article about color blindness](#).


Dichromacy



Original Color
12621717

Protanopia
10854554

Deuteranopia
11901844



Tritanopia
12686753

Trichromacy



Original Color
12621717

Protanomaly
11509144

Deuteranomaly
12163732

Tritanomaly
12687005

Monochromacy



Original Color
12621717

Achromatopsia
10724259

Achromatomaly
11444126

CSS Examples

Text

The CSS property to change the color of the text to Decimal 12621717 is called "color". The color property can be set on classes, ids or directly on the HTML element.

This example shows how text in the color #C09795 looks like.

```
.text, #text, p{  
  color:#C09795  
}
```

If you want to add a text shadow in that color use the text-shadow property, you can generate a text shadow directly with our [CSS Text Shadow Generator](#).

Here you see how black text with a 4 pixel #C09795 colored shadow looks like.

```
.shadow{ text-shadow: 4px 4px 2px #C09795
}
```

Border

The CSS property to change the border of an element to Decimal 12621717 is called "border". The border property can be set on classes, ids or directly on the HTML element.

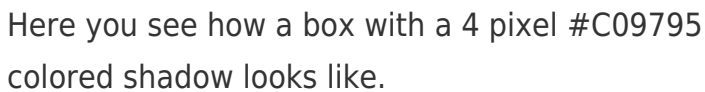
This example shows the color as border, it can be applied via the CSS property "border" or "border-color".

```
.border, #border, table{ border:4px solid
#C09795 }
```

If only the border color should be changed use the property `border-color`.

```
.border{ border-color:#C09795 }
```

If you want to add a box shadow in that color use:



Here you see how a box with a 4 pixel #C09795 colored shadow looks like.

```
.boxshadow{ -moz-box-shadow:4px 4px 4px  
4px #C09795; -webkit-box-shadow:4px 4px  
4px 4px #C09795; box-shadow:4px 4px 4px  
4px #C09795 }
```

Background

The CSS property to change the background color of an element to Decimal 12621717 is called "background". The background property can be set on classes, ids or directly on the HTML element.

```
.background, #background, body{  
background:#C09795 }
```

If only the background color should be changed can be used:

```
.background{ background-color:#C09795 }
```

This example shows the color as background, it is applied via the CSS property "background".

To optimize and compress your CSS code, you can use our [online CSS compressor and optimizer](#) based on csstidy. If you want to create a linear or radial gradient as background or border, check our [CSS Gradient Generator](#).

Hey! You found this booklet interesting? Support Converting Colors with the new Membership Option!

The pro membership hides all ads, plus gives you double the colors in the color bucket, and more awesome pro features!

[Learn more, Memberships starting at \\$2.50/m!](#)

**Follow me
on Twitter!**

@ConvertingColor