

# Converting Colors

Decimal(12621924)

Have a look what the booklet for  
Decimal(12621924) contains.

<b>Decimal(12621924)</b> .....	3
<i><b>Conversions</b></i> .....	4
<i><b>Details</b></i> .....	6
<i><b>Harmonies</b></i> .....	11
<i><b>Previews</b></i> .....	23
<i><b>Color Blindness Simulation</b></i> .....	26
<i><b>CSS Examples</b></i> .....	29

# **Color**

**Decimal(12621924)**

# Conversions

## Conversions Part 1

<b>Format</b>	<b>Color</b>
Hex	C09864
RGB	192, 152, 100
RGB Percent	75%, 60%, 39%
CMY	0.2471, 0.4039, 0.6078
CMYK	0.00, 0.21, 0.48, 0.25
HSL	34°, 42%, 57%
HSV	34°, 48%, 75%
XYZ	35.2667, 34.5830, 16.8730
YIQ	158.0320, 40.5320, -7.6920

# Conversions

## Conversions Part 2

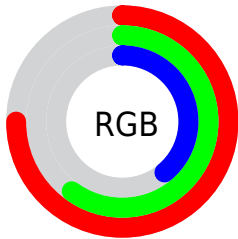
Format	Color
<a href="#">RYB</a>	<a href="#">171, 192, 100</a>
Decimal	<a href="#">12621924</a>
CIELab	<a href="#">65.42, 8.33, 32.96</a>
CIELCh	<a href="#">65, 33.995, 75.816</a>
Yxy	<a href="#">34.5830, 0.4067, 0.3988</a>
Android (android.graphics.Color)	<a href="#">4290812004 (0xFFC09864)</a>
YUV	<a href="#">158.0320, -28.6098, 29.7899</a>
Hunter-Lab	<a href="#">58.8073, 4.1334, 24.1536</a>

# Details

The Decimal color **12621924** is a light color, and the websafe version is hex **CC9966**. A complement of this color would be **6589632**, and the grayscale version is **10395294**.

A 20% lighter version of the original color is **16436888**, and **8938804** is the 20% darker color. If you saturate the color by 10%, you get **12619857**, and if you desaturate by 10%, it is **12623991**.

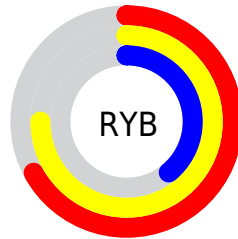
# Distribution



Red (75%)

Green (60%)

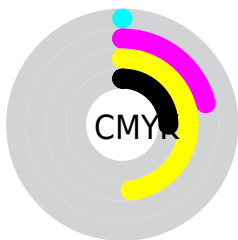
Blue (39%)



Red (67%)

Yellow (75%)

Blue (39%)

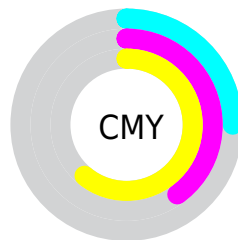


Cyan (0%)

Magenta (21%)

Yellow (48%)

Black (25%)



Cyan (25%)

Magenta (40%)

Yellow (61%)

# Brightness & Saturation Gradients

These gradients show how the Decimal color 12621924 changes by changing the brightness by 10 percent. The first figure shows a shift by +10% for each color and the second figure -10%.

Similar to the brightness gradients but the following saturation gradients show a change of the Decimal color 12621924 by changing the saturation by 10% instead.



 12621924

 12621924

16777215

 10780235

 16436888

 8938804

 16771763

 7163165

 16777166

 5453573

 16777195

 3809536

 2231296

 0

 12621924

 12621924

 12619857

 12623991

12617534

12626314

12615466

12628382

12613399

12630449

12611076

12632772

12610816

12634839

12636906

12639230

12641279

# Harmonies

## Analogous

The Analogous color harmony consists of three colors that are next to each other on the color wheel.



13930101



12621924



10723939

# Triad

The Triadic color harmony groups three colors that are evenly spaced from another and form a triangle on the color wheel.



12621924



3518382



12030409

# Complementary

The Complementary color scheme is a pair of colors which are on the opposite of each other on the color wheel.



12621924



6589632

# Split Complementary

Split-complementary colors differ from the complementary color scheme. The scheme consists of three colors, the original color and two neighbors of the complement color.



9280729



12621924



3124682

# Square

The Square scheme is like the rectangle color scheme, but the four colors are evenly spaced on the color wheel.



12621924



6008463



6072025



13732271

# Rectangle

The Rectangle color scheme consists of four colors that form a rectangle on the color wheel.



12621924



9283692



6072025



11179472

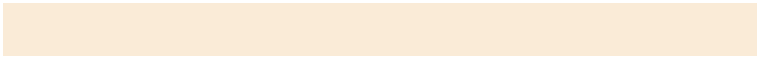


# Sweetspot

The Sweet Spot groups the original color and five complimentary colors.



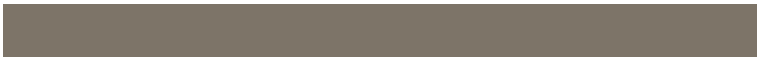
12621924



16444375



12608653



8221800



16579836



8224125



# Same Dimension

The Same Dimension uses a secret algorithm to generate beautiful new colors.



12621924



16431977



12304484



6380887



10574592



2167552

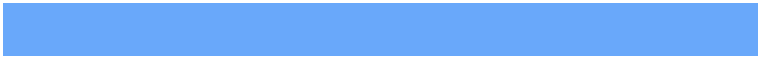


# Inverse Universe

The Inverse Universe completely reimagines the original color for something new.



6589632



6924538



6907072



5725025



18081

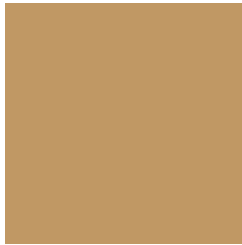


3617



# Previews

## White Background



This preview shows how the Decimal color 12621924 looks on a white background.

## Color Contrast Check

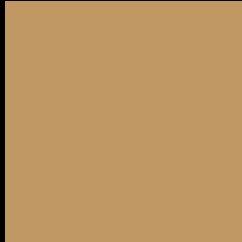
Large Text (above 18pt) WCAG AA × Fail

Any Text WCAG AA × Fail

Large Text (above 18pt) WCAG AAA × Fail

Any Text WCAG AAA × Fail

# Black Background



This preview shows how the Decimal color 12621924 looks on a black background.

## Color Contrast Check

Large Text (above 18pt) WCAG AA ✓ Pass

Any Text WCAG AA ✓ Pass

Large Text (above 18pt) WCAG AAA ✓ Pass

Any Text WCAG AAA ✓ Pass

If you want to check with other color combinations, try the [Color Contrast Checker](#).



## Decimal 12621924 Background



This preview shows how black text looks on a background with the Decimal color 12621924.



This preview shows how white text looks on a background with the Decimal color 12621924.

# Color Blindness Simulation

Color vision deficiency is a very complex topic, and I could not describe the different causes any better than Wikipedia does, so if you want to learn more, you should check out their [article about color blindness](#).

## Dichromacy



**Original Color**  
12621924

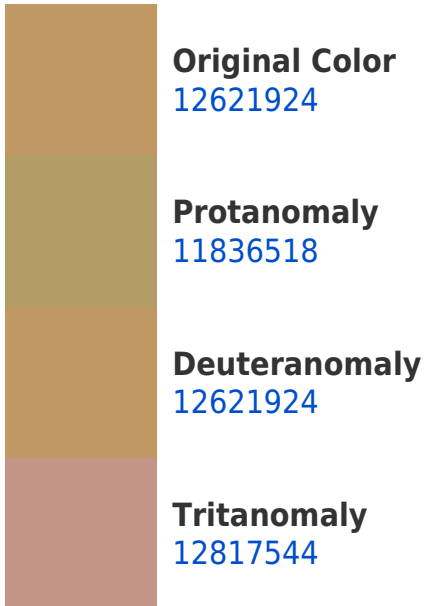
**Protanopia**  
11378535

**Deuteranopia**  
12621924



**Tritanopia**  
12947868

# Trichromacy



# Monochromacy



# CSS Examples

## Text

The CSS property to change the color of the text to Decimal 12621924 is called "color". The color property can be set on classes, ids or directly on the HTML element.

This example shows how text in the color #C09864 looks like.

```
.text, #text, p{  
    color:#C09864  
}
```

If you want to add a text shadow in that color use the text-shadow property, you can generate a text shadow directly with our [CSS Text Shadow Generator](#).

Here you see how black text with a 4 pixel #C09864 colored shadow looks like.

```
.shadow{ text-shadow: 4px 4px 2px #C09864
}
```

## Border

The CSS property to change the border of an element to Decimal 12621924 is called "border". The border property can be set on classes, ids or directly on the HTML element.

This example shows the color as border, it can be applied via the CSS property "border" or "border-color".

```
.border, #border, table{ border:4px solid
#C09864 }
```

If only the border color should be changed use the property border-color.

```
.border{ border-color:#C09864 }
```

If you want to add a box shadow in that color use:

Here you see how a box with a 4 pixel #C09864 colored shadow looks like.

```
.boxshadow{ -moz-box-shadow:4px 4px 4px  
4px #C09864; -webkit-box-shadow:4px 4px  
4px 4px #C09864; box-shadow:4px 4px 4px  
4px #C09864 }
```

# Background

The CSS property to change the background color of an element to Decimal 12621924 is called "background". The background property can be set on classes, ids or directly on the HTML element.

```
.background, #background, body{  
background:#C09864 }
```

If only the background color should be changed can be used:

```
.background{ background-color:#C09864 }
```

This example shows the color as background, it is applied via the CSS property "background".

To optimize and compress your CSS code, you can use our [online CSS compressor and optimizer](#) based on csstidy. If you want to create a linear or radial gradient as background or border, check our [CSS Gradient Generator](#).



Hey! You found this booklet interesting? Support Converting Colors with the new Membership Option!

The pro membership hides all ads, plus gives you double the colors in the color bucket, and more awesome pro features!

**[Learn more, Memberships starting at \\$2.50/m!](#)**

**Follow me  
on Twitter!**

@ConvertingColor