

Converting Colors

Decimal(12621964)

Have a look what the booklet for
Decimal(12621964) contains.

Decimal(12621964)	3
<i>Conversions</i>	4
<i>Details</i>	6
<i>Harmonies</i>	11
<i>Previews</i>	23
<i>Color Blindness Simulation</i>	26
<i>CSS Examples</i>	29

Color

Decimal(12621964)

Conversions

Conversions Part 1

Format	Color
Hex	C0988C
RGB	192, 152, 140
RGB Percent	75%, 60%, 55%
CMY	0.2471, 0.4039, 0.4510
CMYK	0.00, 0.21, 0.27, 0.25
HSL	14°, 29%, 65%
HSV	14°, 27%, 75%
XYZ	37.7001, 35.5564, 29.6870
YIQ	162.5920, 27.6920, 4.7480

Conversions

Conversions Part 2

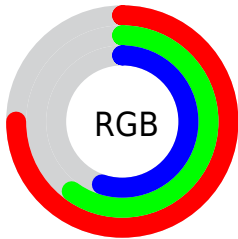
Format	Color
R_{YB}	192, 156, 140
Decimal	12621964
CIE Lab	66.18, 13.15, 12.00
CIE LCh	66, 17.802, 42.388
Yxy	35.5564, 0.3662, 0.3454
Android (android.graphics.Color)	4290812044 (0xFFC0988C)
YUV	162.5920, -11.1379, 25.7908
Hunter-Lab	59.6292, 8.5042, 12.2223

Details

The Decimal color **12621964** is a light color, and the websafe version is hex **CC9999**. A complement of this color would be **9221312**, and the grayscale version is **10724259**.

A 20% lighter version of the original color is **16371394**, and **9069914** is the 20% darker color. If you saturate the color by 10%, you get **12618105**, and if you desaturate by 10%, it is **12625823**.

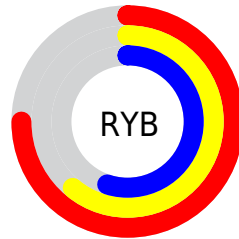
Distribution



Red (75%)

Green (60%)

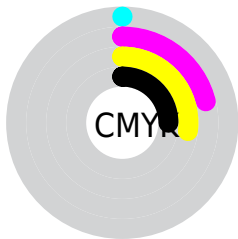
Blue (55%)



Red (75%)

Yellow (61%)

Blue (55%)

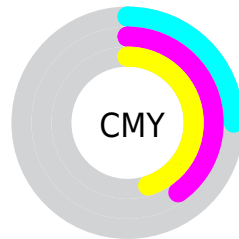


Cyan (0%)

Magenta (21%)

Yellow (27%)

Black (25%)



Cyan (25%)

Magenta (40%)

Yellow (45%)

Brightness & Saturation Gradients


These gradients show how the Decimal color 12621964 changes by changing the brightness by 10 percent. The first figure shows a shift by +10% for each color and the second figure -10%.

Similar to the brightness gradients but the following saturation gradients show a change of the Decimal color 12621964 by changing the saturation by 10% instead.

 12621964  12621964

16777215  10780274

 16371394  9069914

 16772061  7294275

 16777210  5649964

 4071448

 2624256

 0

 12621964  12621964

 12618105  12625823

 12614246

 12629682

 12610642

 12633286

 12606783

 12637145

 12602924

 12641004

 12599065

 12644863

 12595462

 12648447

 12594176

Harmonies

Analogous

The Analogous color harmony consists of three colors that are next to each other on the color wheel.



12752539



12621964



11967875

Triad

The Triadic color harmony groups three colors that are evenly spaced from another and form a triangle on the color wheel.



12621964



8628631



9937088

Complementary

The Complementary color scheme is a pair of colors which are on the opposite of each other on the color wheel.



12621964



9221312

Split Complementary

Split-complementary colors differ from the complementary color scheme. The scheme consists of three colors, the original color and two neighbors of the complement color.



8627647



12621964



7842471

Square

The Square scheme is like the rectangle color scheme, but the four colors are evenly spaced on the color wheel.



12621964



9741961



7842230



11312057

Rectangle

The Rectangle color scheme consists of four colors that form a rectangle on the color wheel.



12621964



11313281



7842230



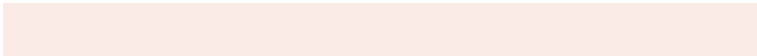
9478848

Sweetspot

The Sweet Spot groups the original color and five complimentary colors.



12621964



16444390



12618933



8221552



16579836



8224125

Same Dimension

The Same Dimension uses a secret algorithm to generate beautiful new colors.



12621964



16431783



12628364



6379863



10560768



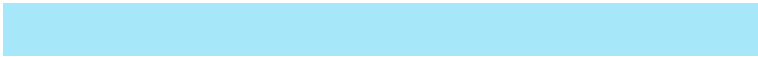
2164736

Inverse Universe

The Inverse Universe completely reimagines the original color for something new.



9221312



11003898



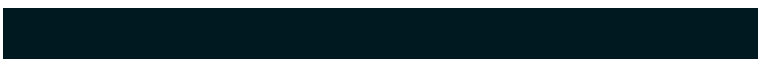
9214912



5726049



31905



6433

Previews

White Background



This preview shows how the Decimal color 12621964 looks on a white background.

Color Contrast Check

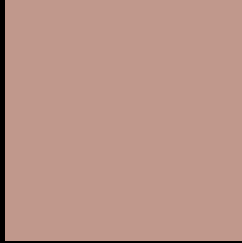
Large Text (above 18pt) WCAG AA × Fail

Any Text WCAG AA × Fail

Large Text (above 18pt) WCAG AAA × Fail

Any Text WCAG AAA × Fail

Black Background



This preview shows how the Decimal color 12621964 looks on a black background.

Color Contrast Check

Large Text (above 18pt) WCAG AA ✓ Pass

Any Text WCAG AA ✓ Pass

Large Text (above 18pt) WCAG AAA ✓ Pass

Any Text WCAG AAA ✓ Pass

If you want to check with other color combinations, try the [Color Contrast Checker](#).

Decimal 12621964 Background



This preview shows how black text looks on a background with the Decimal color 12621964.



This preview shows how white text looks on a background with the Decimal color 12621964.

Color Blindness Simulation

Color vision deficiency is a very complex topic, and I could not describe the different causes any better than Wikipedia does, so if you want to learn more, you should check out their [article about color blindness](#).

Dichromacy





Tritanopia
12752288

Trichromacy



Original Color
12621964

Protanomaly
11640463

Deuteranomaly
12294795

Tritanomaly
12687001

Monochromacy



Original Color
12621964

Achromatopsia
10724259

Achromatomaly
11444123

CSS Examples

Text

The CSS property to change the color of the text to Decimal 12621964 is called "color". The color property can be set on classes, ids or directly on the HTML element.

This example shows how text in the color #C0988C looks like.

```
.text, #text, p{  
    color:#C0988C  
}
```

If you want to add a text shadow in that color use the text-shadow property, you can generate a text shadow directly with our [CSS Text Shadow Generator](#).

Here you see how black text with a 4 pixel #C0988C colored shadow looks like.

```
.shadow{ text-shadow: 4px 4px 2px #C0988C
}
```

Border

The CSS property to change the border of an element to Decimal 12621964 is called "border". The border property can be set on classes, ids or directly on the HTML element.

This example shows the color as border, it can be applied via the CSS property "border" or "border-color".

```
.border, #border, table{ border:4px solid
#C0988C }
```

If only the border color should be changed use the property `border-color`.

```
.border{ border-color:#C0988C }
```

If you want to add a box shadow in that color use:

Here you see how a box with a 4 pixel #C0988C colored shadow looks like.

```
.boxshadow{ -moz-box-shadow:4px 4px 4px  
4px #C0988C; -webkit-box-shadow:4px 4px  
4px 4px #C0988C; box-shadow:4px 4px 4px  
4px #C0988C }
```

Background

The CSS property to change the background color of an element to Decimal 12621964 is called "background". The background property can be set on classes, ids or directly on the HTML element.

```
.background, #background, body{  
background:#C0988C }
```

If only the background color should be changed can be used:

```
.background{ background-color:#C0988C }
```

This example shows the color as background, it is applied via the CSS property "background".

To optimize and compress your CSS code, you can use our [online CSS compressor and optimizer](#) based on csstidy. If you want to create a linear or radial gradient as background or border, check our [CSS Gradient Generator](#).

Hey! You found this booklet interesting? Support Converting Colors with the new Membership Option!

The pro membership hides all ads, plus gives you double the colors in the color bucket, and more awesome pro features!

[Learn more, Memberships starting at \\$2.50/m!](#)

**Follow me
on Twitter!**

@ConvertingColor