

# Converting Colors

Decimal(12622212)

Have a look what the booklet for  
Decimal(12622212) contains.

<b>Decimal(12622212)</b> .....	3
<b><i>Conversions</i></b> .....	4
<b><i>Details</i></b> .....	6
<b><i>Harmonies</i></b> .....	11
<b><i>Previews</i></b> .....	23
<b><i>Color Blindness Simulation</i></b> .....	26
<b><i>CSS Examples</i></b> .....	29

# **Color**

**Decimal(12622212)**

# Conversions

## Conversions Part 1

<b>Format</b>	<b>Color</b>
Hex	C09984
RGB	192, 153, 132
RGB Percent	75%, 60%, 52%
CMY	0.2471, 0.4000, 0.4824
CMYK	0.00, 0.20, 0.31, 0.25
HSL	21°, 32%, 64%
HSV	21°, 31%, 75%
XYZ	37.2943, 35.6549, 26.7463
YIQ	162.2670, 29.9850, 1.7370

# Conversions

## Conversions Part 2

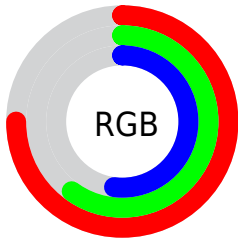
<b>Format</b>	<b>Color</b>
<a href="#">RYB</a>	<a href="#">192, 164, 132</a>
Decimal	<a href="#">12622212</a>
CIELab	<a href="#">66.26, 11.50, 16.56</a>
CIElCh	<a href="#">66, 20.164, 55.231</a>
Yxy	<a href="#">35.6549, 0.3741, 0.3576</a>
Android (android.graphics.Color)	<a href="#">4290812292 (0xFFC09984)</a>
YUV	<a href="#">162.2670, -14.9216, 26.0758</a>
Hunter-Lab	<a href="#">59.7117, 6.9908, 15.2408</a>

# Details

The Decimal color **12622212** is a light color, and the websafe version is hex **CC9999**. A complement of this color would be **8694720**, and the grayscale version is **10658466**.

A 20% lighter version of the original color is **16371641**, and **9004626** is the 20% darker color. If you saturate the color by 10%, you get **12619121**, and if you desaturate by 10%, it is **12625303**.

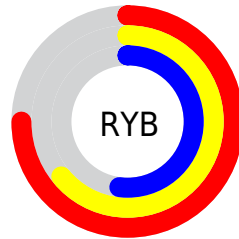
# Distribution



Red (75%)

Green (60%)

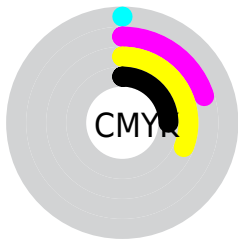
Blue (52%)



Red (75%)

Yellow (64%)

Blue (52%)

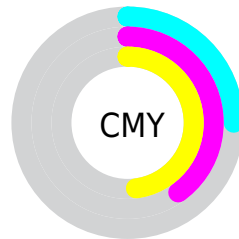


Cyan (0%)

Magenta (20%)

Yellow (31%)

Black (25%)



Cyan (25%)

Magenta (40%)

Yellow (48%)

# Brightness & Saturation Gradients

These gradients show how the Decimal color 12622212 changes by changing the brightness by 10 percent. The first figure shows a shift by +10% for each color and the second figure -10%.

Similar to the brightness gradients but the following saturation gradients show a change of the Decimal color 12622212 by changing the saturation by 10% instead.



 12622212

 12622212

16777215

 10780523

 16371641

 9004626

 16772309

 7294523

 16777201

 5650213

 4006161

 2559232

 0

 12622212

 12622212

 12619121

 12625303

 12615774

 12628650

 12612682

 12631742

 12609335

 12635089

 12606244

 12638180

 12602897

 12641527

 12600064

 12644607

 12647935

 12648447

# Harmonies

## Analogous

The Analogous color harmony consists of three colors that are next to each other on the color wheel.



13079954



12622212



11706237

# Triad

The Triadic color harmony groups three colors that are evenly spaced from another and form a triangle on the color wheel.



12622212



7908253



10526146

# Complementary

The Complementary color scheme is a pair of colors which are on the opposite of each other on the color wheel.



12622212



8694720

# Split Complementary

Split-complementary colors differ from the complementary color scheme. The scheme consists of three colors, the original color and two neighbors of the complement color.



8955077



12622212



7318448

# Square

The Square scheme is like the rectangle color scheme, but the four colors are evenly spaced on the color wheel.



12622212



9087372



7710910



11966646

# Rectangle

The Rectangle color scheme consists of four colors that form a rectangle on the color wheel.



12622212



10855294



7710910



10002628

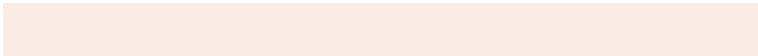


# Sweetspot

The Sweet Spot groups the original color and five complimentary colors.



12622212



16444387



12616875



8221807



16579836



8224125



# Same Dimension

The Same Dimension uses a secret algorithm to generate beautiful new colors.



12622212



16432283



12629636



6380375



10565632



2165760

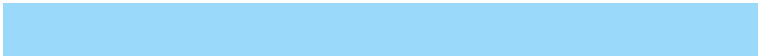


# Inverse Universe

The Inverse Universe completely reimagines the original color for something new.



8694720



10213882



8687040



5725793



26785



5665



# Previews

## White Background



This preview shows how the Decimal color 12622212 looks on a white background.

## Color Contrast Check

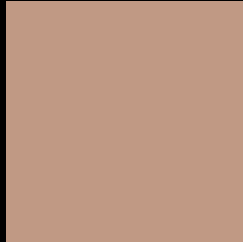
Large Text (above 18pt) WCAG AA × Fail

Any Text WCAG AA × Fail

Large Text (above 18pt) WCAG AAA × Fail

Any Text WCAG AAA × Fail

# Black Background



This preview shows how the Decimal color 12622212 looks on a black background.

## Color Contrast Check

Large Text (above 18pt) WCAG AA ✓ Pass

Any Text WCAG AA ✓ Pass

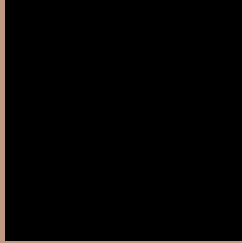
Large Text (above 18pt) WCAG AAA ✓ Pass

Any Text WCAG AAA ✓ Pass

If you want to check with other color combinations, try the [Color Contrast Checker](#).



## Decimal 12622212 Background



This preview shows how black text looks on a background with the Decimal color 12622212.



This preview shows how white text looks on a background with the Decimal color 12622212.

# Color Blindness Simulation

Color vision deficiency is a very complex topic, and I could not describe the different causes any better than Wikipedia does, so if you want to learn more, you should check out their [article about color blindness](#).

## Dichromacy



**Original Color**  
12622212

**Protanopia**  
11182472

**Deuteranopia**  
12295044



**Tritanopia**  
12817824

# Trichromacy



**Original Color**  
12622212

**Protanomaly**  
11705991

**Deuteranomaly**  
12425860

**Tritanomaly**  
12752534

# Monochromacy



**Original Color**  
12622212

**Achromatopsia**  
10658466

**Achromatomaly**  
11378583

# CSS Examples

## Text

The CSS property to change the color of the text to Decimal 12622212 is called "color". The color property can be set on classes, ids or directly on the HTML element.

This example shows how text in the color #C09984 looks like.

```
.text, #text, p{  
    color:#C09984  
}
```

If you want to add a text shadow in that color use the text-shadow property, you can generate a text shadow directly with our [CSS Text Shadow Generator](#).

Here you see how black text with a 4 pixel #C09984 colored shadow looks like.

```
.shadow{ text-shadow: 4px 4px 2px #C09984
}
```

## Border

The CSS property to change the border of an element to Decimal 12622212 is called "border". The border property can be set on classes, ids or directly on the HTML element.

This example shows the color as border, it can be applied via the CSS property "border" or "border-color".

```
.border, #border, table{ border:4px solid
#C09984 }
```

If only the border color should be changed use the property `border-color`.

```
.border{ border-color:#C09984 }
```

If you want to add a box shadow in that color use:

Here you see how a box with a 4 pixel #C09984 colored shadow looks like.

```
.boxshadow{ -moz-box-shadow:4px 4px 4px  
4px #C09984; -webkit-box-shadow:4px 4px  
4px 4px #C09984; box-shadow:4px 4px 4px  
4px #C09984 }
```

# Background

The CSS property to change the background color of an element to Decimal 12622212 is called "background". The background property can be set on classes, ids or directly on the HTML element.

```
.background, #background, body{  
background:#C09984 }
```

If only the background color should be changed can be used:

```
.background{ background-color:#C09984 }
```

This example shows the color as background, it is applied via the CSS property "background".

To optimize and compress your CSS code, you can use our [online CSS compressor and optimizer](#) based on csstidy. If you want to create a linear or radial gradient as background or border, check our [CSS Gradient Generator](#).



Hey! You found this booklet interesting? Support Converting Colors with the new Membership Option!

The pro membership hides all ads, plus gives you double the colors in the color bucket, and more awesome pro features!

**[Learn more, Memberships starting at \\$2.50/m!](#)**

**Follow me  
on Twitter!**

@ConvertingColor