

Converting Colors

Decimal(12622220)

Have a look what the booklet for
Decimal(12622220) contains.

Decimal(12622220)	3
<i>Conversions</i>	4
<i>Details</i>	6
<i>Harmonies</i>	11
<i>Previews</i>	23
<i>Color Blindness Simulation</i>	26
<i>CSS Examples</i>	29

Color

Decimal(12622220)

Conversions

Conversions Part 1

Format	Color
Hex	C0998C
RGB	192, 153, 140
RGB Percent	75%, 60%, 55%
CMY	0.2471, 0.4000, 0.4510
CMYK	0.00, 0.20, 0.27, 0.25
HSL	15°, 29%, 65%
HSV	15°, 27%, 75%
XYZ	37.8631, 35.8824, 29.7413
YIQ	163.1790, 27.4170, 4.2250

Conversions

Conversions Part 2

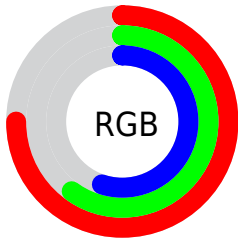
Format	Color
RYB	192, 157, 140
Decimal	12622220
CIELab	66.43, 12.60, 12.35
CIElCh	66, 17.644, 44.440
Yxy	35.8824, 0.3659, 0.3467
Android (android.graphics.Color)	4290812300 (0xFFC0998C)
YUV	163.1790, -11.4272, 25.2760
Hunter-Lab	59.9019, 7.9988, 12.4938

Details

The Decimal color **12622220** is a light color, and the websafe version is hex **CC9999**. A complement of this color would be **9221056**, and the grayscale version is **10724259**.

A 20% lighter version of the original color is **16371650**, and **9070170** is the 20% darker color. If you saturate the color by 10%, you get **12618617**, and if you desaturate by 10%, it is **12625823**.

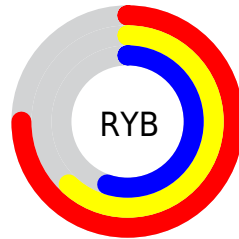
Distribution



Red (75%)

Green (60%)

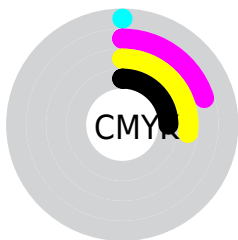
Blue (55%)



Red (75%)

Yellow (62%)

Blue (55%)

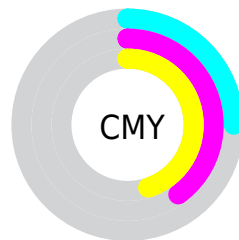


Cyan (0%)

Magenta (20%)

Yellow (27%)

Black (25%)



Cyan (25%)

Magenta (40%)

Yellow (45%)

Brightness & Saturation Gradients

These gradients show how the Decimal color 12622220 changes by changing the brightness by 10 percent. The first figure shows a shift by +10% for each color and the second figure -10%.

Similar to the brightness gradients but the following saturation gradients show a change of the Decimal color 12622220 by changing the saturation by 10% instead.

 12622220

 12622220

16777215

 10780530

 16371650

 9070170

 16772317

 7294530

 16777210

 5650220

 4071704

 2624512

 0

 12622220

 12622220

 12618617

 12625823

 12614758

 12629682

 12611154

 12633286

 12607295

 12637145

 12603692

 12640748

 12600089

 12644351

 12596230

 12648191

 12595200

 12648447

Harmonies

Analogous

The Analogous color harmony consists of three colors that are next to each other on the color wheel.



12818330



12622220



11968131

Triad

The Triadic color harmony groups three colors that are evenly spaced from another and form a triangle on the color wheel.



12622220



8628889



10133696

Complementary

The Complementary color scheme is a pair of colors which are on the opposite of each other on the color wheel.



12622220



9221056

Split Complementary

Split-complementary colors differ from the complementary color scheme. The scheme consists of three colors, the original color and two neighbors of the complement color.



8824256



12622220



7908265

Square

The Square scheme is like the rectangle color scheme, but the four colors are evenly spaced on the color wheel.



12622220



9742219



7973303



11443128

Rectangle

The Rectangle color scheme consists of four colors that form a rectangle on the color wheel.



12622220



11248002



7973303



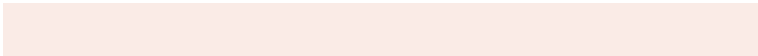
9675457

Sweetspot

The Sweet Spot groups the original color and five complimentary colors.



12622220



16444390



12618931



8221808



16579836



8224125

Same Dimension

The Same Dimension uses a secret algorithm to generate beautiful new colors.



12622220



16432295



12628620



6380119



10561536



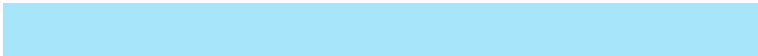
2164736

Inverse Universe

The Inverse Universe completely reimagines the original color for something new.



9221056



11003386



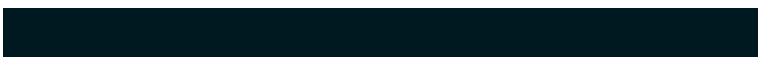
9214656



5725793



30881



6433

Previews

White Background



This preview shows how the Decimal color 12622220 looks on a white background.

Color Contrast Check

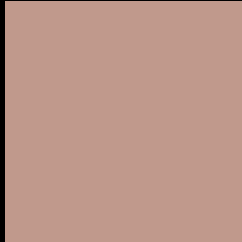
Large Text (above 18pt) WCAG AA × Fail

Any Text WCAG AA × Fail

Large Text (above 18pt) WCAG AAA × Fail

Any Text WCAG AAA × Fail

Black Background



This preview shows how the Decimal color 12622220 looks on a black background.

Color Contrast Check

Large Text (above 18pt) WCAG AA ✓ Pass

Any Text WCAG AA ✓ Pass

Large Text (above 18pt) WCAG AAA ✓ Pass

Any Text WCAG AAA ✓ Pass

If you want to check with other color combinations, try the [Color Contrast Checker](#).

Decimal 12622220 Background



This preview shows how black text looks on a background with the Decimal color 12622220.



This preview shows how white text looks on a background with the Decimal color 12622220.

Color Blindness Simulation

Color vision deficiency is a very complex topic, and I could not describe the different causes any better than Wikipedia does, so if you want to learn more, you should check out their [article about color blindness](#).

Dichromacy



Original Color
12622220

Protanopia
11116944

Deuteranopia
12164235

Trichromacy



Original Color
12622220

Protanomaly
11640463

Deuteranomaly
12360587

Tritanomaly
12687257

Monochromacy



Original Color
12622220

Achromatopsia
10724259

Achromatomaly
11444123

CSS Examples

Text

The CSS property to change the color of the text to Decimal 12622220 is called "color". The color property can be set on classes, ids or directly on the HTML element.

This example shows how text in the color #C0998C looks like.

```
.text, #text, p{  
    color:#C0998C  
}
```

If you want to add a text shadow in that color use the text-shadow property, you can generate a text shadow directly with our [CSS Text Shadow Generator](#).

Here you see how black text with a 4 pixel #C0998C colored shadow looks like.

```
.shadow{ text-shadow: 4px 4px 2px #C0998C
}
```

Border

The CSS property to change the border of an element to Decimal 12622220 is called "border". The border property can be set on classes, ids or directly on the HTML element.

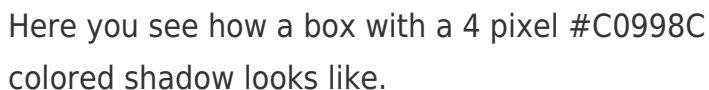
This example shows the color as border, it can be applied via the CSS property "border" or "border-color".

```
.border, #border, table{ border:4px solid
#C0998C }
```

If only the border color should be changed use the property border-color.

```
.border{ border-color:#C0998C }
```

If you want to add a box shadow in that color use:



Here you see how a box with a 4 pixel #C0998C colored shadow looks like.

```
.boxshadow{ -moz-box-shadow:4px 4px 4px  
4px #C0998C; -webkit-box-shadow:4px 4px  
4px 4px #C0998C; box-shadow:4px 4px 4px  
4px #C0998C }
```

Background

The CSS property to change the background color of an element to Decimal 12622220 is called "background". The background property can be set on classes, ids or directly on the HTML element.

```
.background, #background, body{  
background:#C0998C }
```

If only the background color should be changed can be used:

```
.background{ background-color:#C0998C }
```

This example shows the color as background, it is applied via the CSS property "background".

To optimize and compress your CSS code, you can use our [online CSS compressor and optimizer](#) based on csstidy. If you want to create a linear or radial gradient as background or border, check our [CSS Gradient Generator](#).

Hey! You found this booklet interesting? Support Converting Colors with the new Membership Option!

The pro membership hides all ads, plus gives you double the colors in the color bucket, and more awesome pro features!

[Learn more, Memberships starting at \\$2.50/m!](#)

**Follow me
on Twitter!**

@ConvertingColor