

Converting Colors

Decimal(12623502)

Have a look what the booklet for
Decimal(12623502) contains.

Decimal(12623502)	3
<i>Conversions</i>	4
<i>Details</i>	6
<i>Harmonies</i>	11
<i>Previews</i>	23
<i>Color Blindness Simulation</i>	26
<i>CSS Examples</i>	29

Color

Decimal(12623502)

Conversions

Conversions Part 1

Format	Color
Hex	C09E8E
RGB	192, 158, 142
RGB Percent	75%, 62%, 56%
CMY	0.2471, 0.3804, 0.4431
CMYK	0.00, 0.18, 0.26, 0.25
HSL	19°, 28%, 65%
HSV	19°, 26%, 75%
XYZ	38.8476, 37.6132, 30.8038
YIQ	166.3420, 25.4000, 2.2320

Conversions

Conversions Part 2

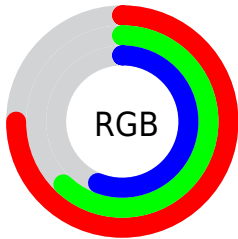
Format	Color
RYB	192, 166, 142
Decimal	12623502
CIELab	67.73, 10.14, 13.08
CIElCh	68, 16.545, 52.218
Yxy	37.6132, 0.3622, 0.3507
Android (android.graphics.Color)	4290813582 (0xFFC09E8E)
YUV	166.3420, -12.0006, 22.5021
Hunter-Lab	61.3296, 5.7392, 13.1514

Details

The Decimal color **12623502** is a light color, and the websafe version is hex **CC9999**. A complement of this color would be **9351360**, and the grayscale version is **10921638**.

A 20% lighter version of the original color is **16373188**, and **9071452** is the 20% darker color. If you saturate the color by 10%, you get **12620155**, and if you desaturate by 10%, it is **12626849**.

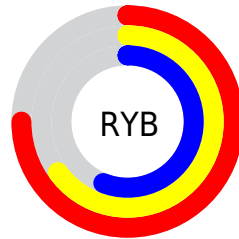
Distribution



Red (75%)

Green (62%)

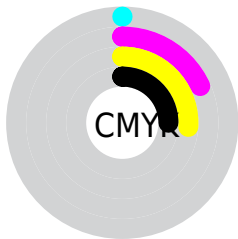
Blue (56%)



Red (75%)

Yellow (65%)

Blue (56%)

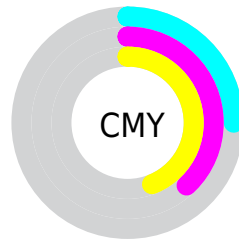


Cyan (0%)

Magenta (18%)

Yellow (26%)

Black (25%)



Cyan (25%)

Magenta (38%)

Yellow (44%)

Brightness & Saturation Gradients

These gradients show how the Decimal color 12623502 changes by changing the brightness by 10 percent. The first figure shows a shift by +10% for each color and the second figure -10%.

Similar to the brightness gradients but the following saturation gradients show a change of the Decimal color 12623502 by changing the saturation by 10% instead.



12623502



12623502

16777215



10781812



16373188



9071452



16773600



7361092

16777212



5716782



4072729



2691328



65536



0



12623502



12623502

 12620155

 12626849

 12616808

 12630196

 12613460

 12633544

 12610113

 12636891

 12606766

 12640238

 12603419

 12643583

 12600072

 12646911

 12598528

 12648447

Harmonies

Analogous

The Analogous color harmony consists of three colors that are next to each other on the color wheel.



12950426



12623502



11903880

Triad

The Triadic color harmony groups three colors that are evenly spaced from another and form a triangle on the color wheel.



12623502



8760736



10724288

Complementary

The Complementary color scheme is a pair of colors which are on the opposite of each other on the color wheel.



12623502



9351360

Split Complementary

Split-complementary colors differ from the complementary color scheme. The scheme consists of three colors, the original color and two neighbors of the complement color.



9480386



12623502



8302256

Square

The Square scheme is like the rectangle color scheme, but the four colors are evenly spaced on the color wheel.



12623502



9743250



8498108



11902647

Rectangle

The Rectangle color scheme consists of four colors that form a rectangle on the color wheel.



12623502



11183752



8498108



10265794

Sweetspot

The Sweet Spot groups the original color and five complimentary colors.



12623502



16444646



12619440



8221808



16579836



8224125

Same Dimension

The Same Dimension uses a secret algorithm to generate beautiful new colors.



12623502



16434604



12629902



6380119



10564352



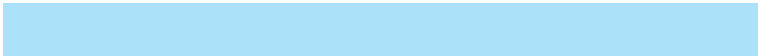
2165504

Inverse Universe

The Inverse Universe completely reimagines the original color for something new.



9351360



11330042



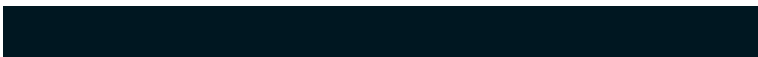
9344960



5725793



28065



5921

Previews

White Background



This preview shows how the Decimal color 12623502 looks on a white background.

Color Contrast Check

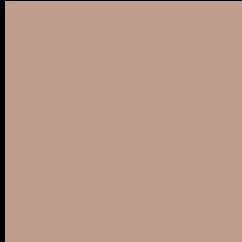
Large Text (above 18pt) WCAG AA × Fail

Any Text WCAG AA × Fail

Large Text (above 18pt) WCAG AAA × Fail

Any Text WCAG AAA × Fail

Black Background



This preview shows how the Decimal color 12623502 looks on a black background.

Color Contrast Check

Large Text (above 18pt) WCAG AA ✓ Pass

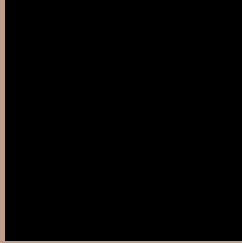
Any Text WCAG AA ✓ Pass

Large Text (above 18pt) WCAG AAA ✓ Pass

Any Text WCAG AAA ✓ Pass

If you want to check with other color combinations, try the [Color Contrast Checker](#).

Decimal 12623502 Background



This preview shows how black text looks on a background with the Decimal color 12623502.



This preview shows how white text looks on a background with the Decimal color 12623502.

Color Blindness Simulation

Color vision deficiency is a very complex topic, and I could not describe the different causes any better than Wikipedia does, so if you want to learn more, you should check out their [article about color blindness](#).


Dichromacy



Original Color
12623502

Protanopia
11380113

Deuteranopia
12427150



Tritanopia
12819110

Trichromacy



Original Color
12623502

Protanomaly
11838096

Deuteranomaly
12492686

Tritanomaly
12753821

Monochromacy



Original Color
12623502

Achromatopsia
10921638

Achromatomaly
11510685

CSS Examples

Text

The CSS property to change the color of the text to Decimal 12623502 is called "color". The color property can be set on classes, ids or directly on the HTML element.

This example shows how text in the color #C09E8E looks like.

```
.text, #text, p{  
    color:#C09E8E  
}
```

If you want to add a text shadow in that color use the text-shadow property, you can generate a text shadow directly with our [CSS Text Shadow Generator](#).

Here you see how black text with a 4 pixel #C09E8E colored shadow looks like.

```
.shadow{ text-shadow: 4px 4px 2px #C09E8E
}
```

Border

The CSS property to change the border of an element to Decimal 12623502 is called "border". The border property can be set on classes, ids or directly on the HTML element.

This example shows the color as border, it can be applied via the CSS property "border" or "border-color".

```
.border, #border, table{ border:4px solid
#C09E8E }
```

If only the border color should be changed use the property `border-color`.

```
.border{ border-color:#C09E8E }
```

If you want to add a box shadow in that color use:

Here you see how a box with a 4 pixel #C09E8E colored shadow looks like.

```
.boxshadow{ -moz-box-shadow:4px 4px 4px  
4px #C09E8E; -webkit-box-shadow:4px 4px  
4px 4px #C09E8E; box-shadow:4px 4px 4px  
4px #C09E8E }
```

Background

The CSS property to change the background color of an element to Decimal 12623502 is called "background". The background property can be set on classes, ids or directly on the HTML element.

```
.background, #background, body{  
background:#C09E8E }
```

If only the background color should be changed can be used:

```
.background{ background-color:#C09E8E }
```

This example shows the color as background, it is applied via the CSS property "background".

To optimize and compress your CSS code, you can use our [online CSS compressor and optimizer](#) based on csstidy. If you want to create a linear or radial gradient as background or border, check our [CSS Gradient Generator](#).

Hey! You found this booklet interesting? Support Converting Colors with the new Membership Option!

The pro membership hides all ads, plus gives you double the colors in the color bucket, and more awesome pro features!

[Learn more, Memberships starting at \\$2.50/m!](#)

**Follow me
on Twitter!**

@ConvertingColor