

Converting Colors

Decimal(12624277)

Have a look what the booklet for
Decimal(12624277) contains.

Decimal(12624277)	3
<i>Conversions</i>	4
<i>Details</i>	6
<i>Harmonies</i>	11
<i>Previews</i>	23
<i>Color Blindness Simulation</i>	26
<i>CSS Examples</i>	29

Color

Decimal(12624277)

Conversions

Conversions Part 1

Format	Color
Hex	C0A195
RGB	192, 161, 149
RGB Percent	75%, 63%, 58%
CMY	0.2471, 0.3686, 0.4157
CMYK	0.00, 0.16, 0.22, 0.25
HSL	17°, 25%, 67%
HSV	17°, 22%, 75%
XYZ	39.9079, 38.8661, 33.8323
YIQ	168.9010, 22.3280, 2.8400

Conversions

Conversions Part 2

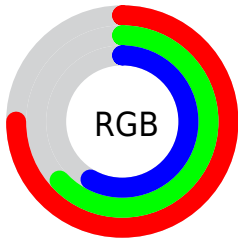
Format	Color
RYB	192, 166, 149
Decimal	12624277
CIELab	68.65, 9.52, 10.49
CIElCh	69, 14.166, 47.788
Yxy	38.8661, 0.3544, 0.3452
Android (android.graphics.Color)	4290814357 (0xFFC0A195)
YUV	168.9010, -9.8112, 20.2578
Hunter-Lab	62.3427, 5.1648, 11.4642

Details

The Decimal color **12624277** is a light color, and the websafe version is hex **CC9999**. A complement of this color would be **9811136**, and the grayscale version is **11119017**.

A 20% lighter version of the original color is **16373963**, and **9071970** is the 20% darker color. If you saturate the color by 10%, you get **12620674**, and if you desaturate by 10%, it is **12627880**.

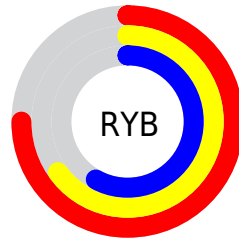
Distribution



Red (75%)

Green (63%)

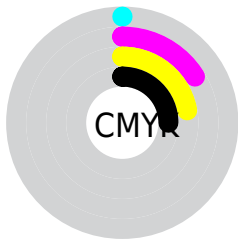
Blue (58%)



Red (75%)

Yellow (65%)

Blue (58%)

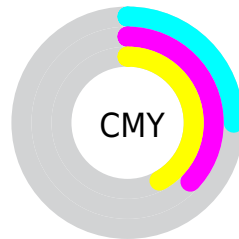


Cyan (0%)

Magenta (16%)

Yellow (22%)

Black (25%)



Cyan (25%)

Magenta (37%)

Yellow (42%)

Brightness & Saturation Gradients

These gradients show how the Decimal color 12624277 changes by changing the brightness by 10 percent. The first figure shows a shift by +10% for each color and the second figure -10%.

Similar to the brightness gradients but the following saturation gradients show a change of the Decimal color 12624277 by changing the saturation by 10% instead.



12624277



12624277

16777215



10848123



16373963



9071970



16774375



7361866



5717556



4139039



2691846



655360



0



12624277



12624277

12620674

12627880

12617071

12631483

12613467

12635087

12610120

12638434

12606517

12642037

12602914

12645631

12599311

12648447

12596736

Harmonies

Analogous

The Analogous color harmony consists of three colors that are next to each other on the color wheel.



12820384



12624277



12035471

Triad

The Triadic color harmony groups three colors that are evenly spaced from another and form a triangle on the color wheel.



12624277



9351074



10725056

Complementary

The Complementary color scheme is a pair of colors which are on the opposite of each other on the color wheel.



12624277



9811136

Split Complementary

Split-complementary colors differ from the complementary color scheme. The scheme consists of three colors, the original color and two neighbors of the complement color.



9677504



12624277



8892335

Square

The Square scheme is like the rectangle color scheme, but the four colors are evenly spaced on the color wheel.



12624277



10202518



9022906



11772601

Rectangle

The Rectangle color scheme consists of four colors that form a rectangle on the color wheel.



12624277



11446414



9022906



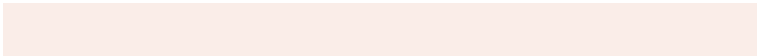
10397633

Sweetspot

The Sweet Spot groups the original color and five complimentary colors.



12624277



16444904



12621237



8222323



16579836



8224125

Same Dimension

The Same Dimension uses a secret algorithm to generate beautiful new colors.



12624277



16435638



12629653



6380119



10562816



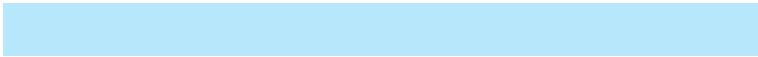
2164992

Inverse Universe

The Inverse Universe completely reimagines the original color for something new.



9811136



11986938



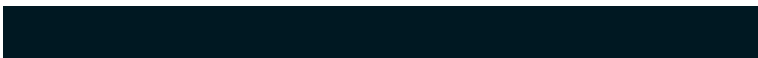
9805760



5725793



29857



6177

Previews

White Background



This preview shows how the Decimal color 12624277 looks on a white background.

Color Contrast Check

Large Text (above 18pt) WCAG AA × Fail

Any Text WCAG AA × Fail

Large Text (above 18pt) WCAG AAA × Fail

Any Text WCAG AAA × Fail

Black Background



This preview shows how the Decimal color 12624277 looks on a black background.

Color Contrast Check

Large Text (above 18pt) WCAG AA ✓ Pass

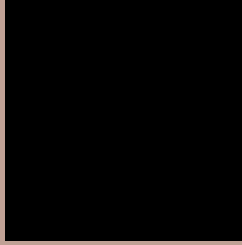
Any Text WCAG AA ✓ Pass

Large Text (above 18pt) WCAG AAA ✓ Pass

Any Text WCAG AAA ✓ Pass

If you want to check with other color combinations, try the [Color Contrast Checker](#).

Decimal 12624277 Background



This preview shows how black text looks on a background with the Decimal color 12624277.



This preview shows how white text looks on a background with the Decimal color 12624277.

Color Blindness Simulation

Color vision deficiency is a very complex topic, and I could not describe the different causes any better than Wikipedia does, so if you want to learn more, you should check out their [article about color blindness](#).


Dichromacy



Original Color
[12624277](#)

Protanopia
[11446168](#)

Deuteranopia
[12558997](#)



Tritanopia
12820138

Trichromacy



Original Color
12624277

Protanomaly
11904407

Deuteranomaly
12558997

Tritanomaly
12754850

Monochromacy



Original Color
12624277

Achromatopsia
11119017

Achromatomaly
11642530

CSS Examples

Text

The CSS property to change the color of the text to Decimal 12624277 is called "color". The color property can be set on classes, ids or directly on the HTML element.

This example shows how text in the color #C0A195 looks like.

```
.text, #text, p{  
  color:#C0A195  
}
```

If you want to add a text shadow in that color use the text-shadow property, you can generate a text shadow directly with our [CSS Text Shadow Generator](#).

Here you see how black text with a 4 pixel #C0A195 colored shadow looks like.

```
.shadow{ text-shadow: 4px 4px 2px #C0A195
}
```

Border

The CSS property to change the border of an element to Decimal 12624277 is called "border". The border property can be set on classes, ids or directly on the HTML element.

This example shows the color as border, it can be applied via the CSS property "border" or "border-color".

```
.border, #border, table{ border:4px solid
#C0A195 }
```

If only the border color should be changed use the property `border-color`.

```
.border{ border-color:#C0A195 }
```

If you want to add a box shadow in that color use:

Here you see how a box with a 4 pixel #C0A195 colored shadow looks like.

```
.boxshadow{ -moz-box-shadow:4px 4px 4px  
4px #C0A195; -webkit-box-shadow:4px 4px  
4px 4px #C0A195; box-shadow:4px 4px 4px  
4px #C0A195 }
```

Background

The CSS property to change the background color of an element to Decimal 12624277 is called "background". The background property can be set on classes, ids or directly on the HTML element.

```
.background, #background, body{  
background:#C0A195 }
```

If only the background color should be changed can be used:

```
.background{ background-color:#C0A195 }
```

This example shows the color as background, it is applied via the CSS property "background".

To optimize and compress your CSS code, you can use our [online CSS compressor and optimizer](#) based on csstidy. If you want to create a linear or radial gradient as background or border, check our [CSS Gradient Generator](#).

Hey! You found this booklet interesting? Support Converting Colors with the new Membership Option!

The pro membership hides all ads, plus gives you double the colors in the color bucket, and more awesome pro features!

[Learn more, Memberships starting at \\$2.50/m!](#)

**Follow me
on Twitter!**

@ConvertingColor